



Crystal Quest® Water Pitcher Filter System INSTALLATION AND OPERATION GUIDE



ONLINE WARRANTY INFORMATION
CrystalQuest.com/warranty.html

Copyright 2018
Crystal Quest®
All rights reserved
MADE IN THE USA





CARE AND OPTIMUM USE

1. Use cold water only. Do not use water above 85°F/ 29°C. This may damage the filter cartridge (2).
2. Hand wash lid (1), reservoir (3), and pitcher (4) with mild, soapy water.
3. The contaminants or other substances removed or reduced by this water filter are not necessarily in all users' water.
4. Do not use with water that is microbiologically unsafe or of unknown quality.

Your Pitcher Water Filter* system contains a cartridge that must be replaced at regular intervals to maintain proper performance.

- The filter cartridge has a limited service life*. Use only Crystal Quest® approved cartridges.
- Changes in taste, odor, and flow of the water being filtered indicate that cartridge should be replaced.
- Do not use non-Crystal Quest® parts or modify/tamper with unit.
- **DO NOT** run hot water through unit.
- **DO NOT** use where water is microbiologically unsafe.

OPERATING SPECIFICATIONS

Temperature Range: 40-85° (4.4-29° C)

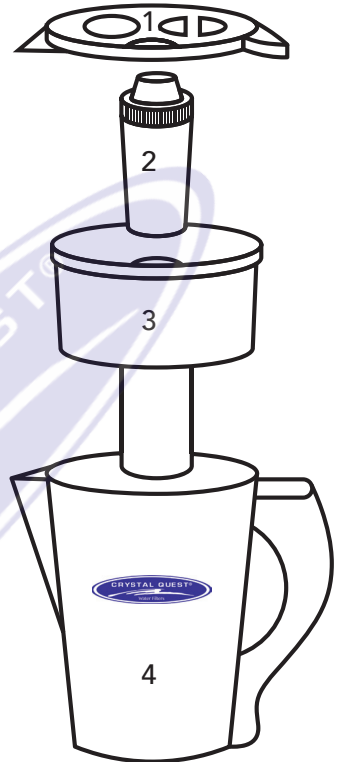


Fig. 1

*Capacity: Approximately 2,000 gallons (6-12 months). Life of the cartridge varies with water consumption and water condition

TROUBLESHOOTING

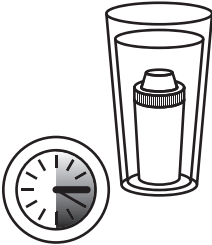
1. **Unfiltered water leaks into the filtered water reservoir:** Check to be sure that the filter cartridge (2) has been pushed firmly into place.
2. **Dust appears in the filter water reservoir:** Filter cartridge (2, Fig 1) is not flushed properly. Flush new cartridges.
3. **Water not filtering through cartridge:** It is recommended that you clean replacement cartridge to avoid clogging. In certain geographical areas the cartridge may need to be cleaned more often.
4. For more information refer to labels and website.



INSTALLATION INSTRUCTIONS


Unpack pitcher and filter cartridge from plastic wrapping and follow steps below.

Soak filter upright in cold water for 20 minutes (first time only).

An illustration showing a cylindrical filter cartridge standing upright in a tall glass filled with water. To the left of the glass is a circular clock face with a needle pointing to the 20-minute mark.


STEP 1

Hand-wash pitcher, lid, and reservoir with mild detergent.

An illustration of a pitcher with its lid and a separate reservoir component placed on a surface next to it, representing the washing step.


STEP 2

Rinse pitcher filter cartridge under cold water for 10-15 seconds.

An illustration of a hand holding the filter cartridge under a stream of water from a faucet, with water droplets shown around the filter.


STEP 3

Fit reservoir inside pitcher until first ridge is flush with pitcher rim.

An illustration showing the reservoir being lowered into the pitcher. A downward-pointing arrow indicates the direction of movement.


STEP 4

Insert pitcher filter cartridge into reservoir. Press firmly to ensure a tight seal.

An illustration showing the filter cartridge being pushed into the reservoir. A downward arrow indicates the direction of insertion.

STEP 5

Fill reservoir with tap water, allowing water to flow into bottom part of pitcher, and you will have fresh, clean water in seconds.
Note: Empty first two full pitchers (first time only)

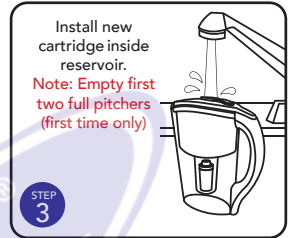
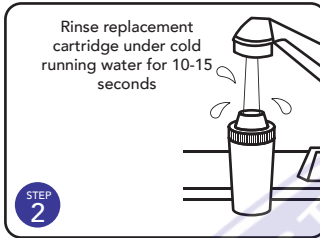
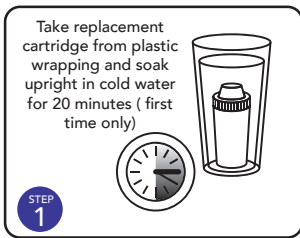
An illustration of a hand filling the pitcher with water from a faucet. Water is shown flowing into the reservoir and down into the pitcher's body.

STEP 6



REPLACEMENT CARTRIDGE

Remove lid from pitcher. Dislodge used cartridge from reservoir by pushing cartridge upward through holding space. After following steps 1-3 below, place new cartridge in, pressing firmly to ensure a tight seal. Reset electronic fill indicator as instructed.



ONE-YEAR LIMITED WARRANTY

CRYSTAL QUEST® warrants your CRYSTAL QUEST® Water Pitcher Filter for one year from the date of purchase against all defects in materials and workmanship when used in compliance with the manual. CRYSTAL QUEST® disclaims all implied warranties including, without limitation, warranties of merchantability and fitness for a particular purpose. If for any reason the product proves to be defective within one year from the date of purchase (90 days for filter cartridge), please call for assistance. This warranty gives you specific legal rights and you may have other legal rights which vary from state to state. CRYSTAL QUEST® assumes no responsibility for incidental or consequential damages, for damages arising out of misuse of the product, or the use of any unauthorized attachment. Some states do not allow the exclusion or limitation of implied warranties or incidental or consequential damages; therefore, the above limitations or exclusions may not apply to you. Should service be required during or after the warranty period or should you have any questions regarding how to use your CRYSTAL QUEST® Water Pitcher Filter, contact our Technical Support Department at service@crystalquest.com, Monday through Friday, 9 A.M. to 5 P.M. Eastern Time.

KEEP THIS MANUAL FOR FUTURE REFERENCE AND UNIT MAINTENANCE

Online warranty information
<http://crystalquest.com/warranty.htm>

Product design is subject to change without notice.

For further assistance, contact your Crystal Quest dealer or visit us at www.crystalquest.com

To view the latest edition of the Water Pitcher Filter Guide, visit CrystalQuest.com

Please note all drawings, pictures, colors and sizes are approximate for illustrative purposes only and may not exactly resemble the end product.

