A close-up, high-angle photograph of a complex mechanical assembly, likely a watch movement or a precision instrument. The image shows several interlocking gears of various sizes, some with teeth that are highly polished and reflective. The lighting is dramatic, highlighting the metallic surfaces and creating deep shadows in the recesses of the gears. The background is dark and out of focus, emphasizing the intricate details of the machinery in the foreground.

PRO AND ENTERPRISE

FACILIWORKS CMMS SOFTWARE

Whether your business has a single location or multiple facilities worldwide, whether used by management, engineers or technicians, FaciliWorks CMMS software can be scaled to fit your needs and your budget. The various FaciliWorks versions offer different levels of maintenance management to be as basic or as comprehensive as you need it to be.

FaciliWorks CMMS software is standards compliant, offers multiple version and deployment options and is not module based; it includes everything you need to master your facility's maintenance. We've been in business since 1988, so you can be certain that we'll be here to make sure you get the most out of your investment.

VERSIONS AND DEPLOYMENT OPTIONS

FaciliWorks is web-based CMMS software, available in both Pro and Enterprise versions. Both Pro and Enterprise can be deployed as hosted or on-premise solutions; only Enterprise offers the streamlined, mobile-friendly interface for techs to use in the field.

[MORE INFO](#)

FEATURES

FACILIWORKS PRO INCLUDES THE FOLLOWING FEATURES:

- View your operations and asset status in real time with dashboard analytics
- Automatic PM alerts and a workload calendar assure that no asset will be forgotten
- Maintain detailed records on all assets, tasks, procedures, suppliers, personnel, inventory, purchasing, budgets, tools, scheduled and unscheduled maintenance and much more
- Use email notification for service requests, WOs and PMs
- Date-based, meter-based and seasonal PM scheduling
- Mark various fields as required, thus preventing the entry of incomplete PM, WO and asset records
- Submit service requests via the full program or separate Web Service Request entry point; requests are then edited or approved and can be converted into work orders automatically
- Assets - track general asset information, warranties, service contracts, leases, history, events, costs and authorized persons
- Upon the creation of WOs, PMs and service requests and on the asset's main record, FaciliWorks displays an alert as to the status of the asset's warranties, ensuring you take advantage of all warranty benefits
- Tasks - monitor parts, tools, variables and labor hours (including regular, OT and total hours) by task
- Track highly detailed maintenance procedures, checklists and variables for the entire asset hierarchy
- Personnel - track crafts, training, work history and labor hours; ensure accountability by requiring sign-off on checklist steps and completion of WOs and PMs
- Tool Crib - issue and return
- Spare Parts - inventory optimization; warehouses; track and maintain parts and sub-assemblies with component hierarchies
- Suppliers - ensure correct tracking of assets, asset warranties, parts inventory and tools
- Procurement - create purchase orders, receive and reorder
- Attach external documents to asset, part or procedure records

- Clone asset records with all associated tasks, parts and tools to save data entry time
- Utilize a multitude of integrated reports and graphs and save them to the dashboard as favorites or use the custom report designer to create specialized reports and save them for easy future access
- Analyze equipment breakdown information
- Use bar-coded labels and barcode input to save time and reduce costly errors
- Configure program messages and field, form, tab and menu names with your preferred terminology
- Standards Compliance - ISO, IATF, AS and FDA (embedded 21 CFR Part 11 integration)
- Security - global, personal, record level and field level; ID/password login; group security permissions
- Available in English and Spanish; can be adapted to Chinese, French and German through Google Translate

UPGRADE TO FACILIWORKS ENTERPRISE TO GET ALL OF THE FEATURES OF PRO, PLUS:

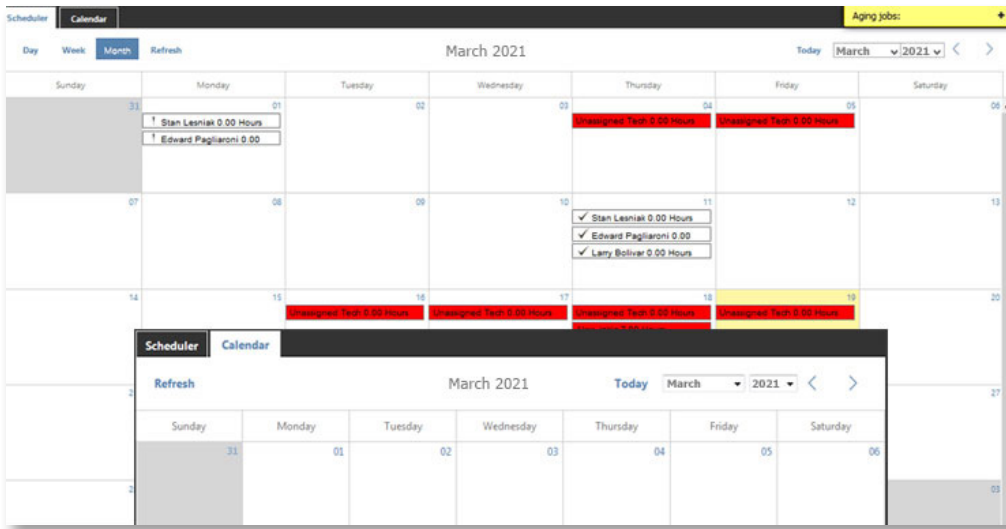
- FaciliWorks Mobile - complete WOs and PMs and update meter readings in the field from any device
- Use the scheduling calendar to reassign the date by dragging and dropping the PM or WO into a new date or assigning the work to a different technician
- Predictive Maintenance - key performance indicators (KPIs): mean time between failures, assets with highest downtime for WOs, top 10 assets with most WOs and percent PMs completed on time versus completed late
- Workflow - define tasks, triggers and notification events
- Asset Grouping - partition a shared database by department, location, etc.; limiting user access improves security while allowing full access to managers
- Multitask Work Orders - perform multiple tasks on a single asset or combine multiple assets in a single work order
- Route Preventative Maintenance - perform checks on multiple assets, prioritized or set to min. travel time

OPTIONAL CALIBRATION MANAGEMENT

Combine all of the benefits of FaciliWorks with the power of GAGetrak®, our auditor-recommended calibration management software, for an all-in-one solution.

- Gage Management - gage records, attributes, parts, history, track as-found condition of gages
- Gage Crib Manager - issue and return
- Out-of-tolerance Alert - calibration trigger
- Calibration Request - email notification, multiple gages
- Calibration Scheduler - scheduled and unscheduled, due dates
- Produce calibration certificates
- Capture all measurement readings
- Standards Compliance - ISO, IATF, AS and FDA compliance (single-track validation)
- Ability to print durable, auditable calibration labels

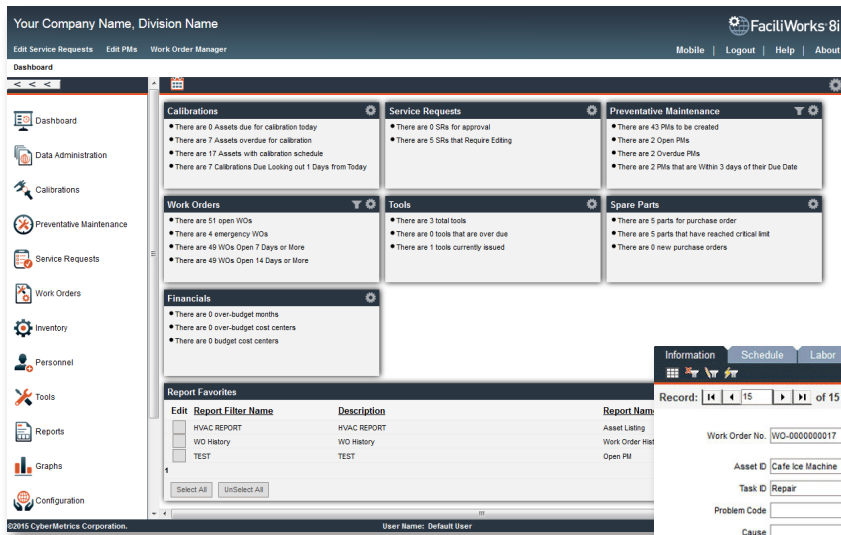
USER INTERFACE



Use the drag & drop scheduler to assign a date on which a staff member will complete a PM/WO and assign/reassign PM and WO events to any staff member on any day to quickly and easily balance work load hours among the staff.

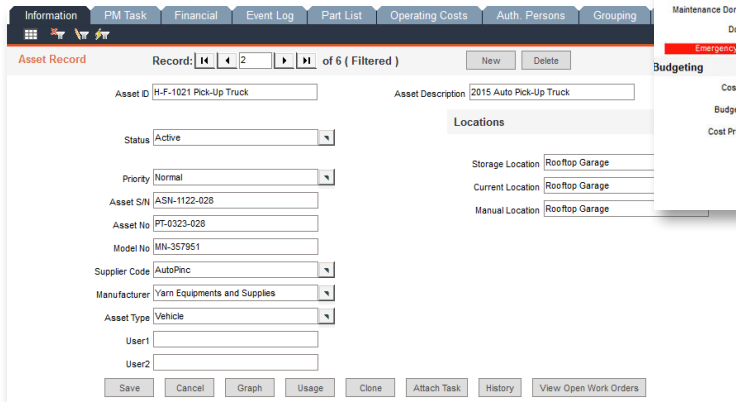
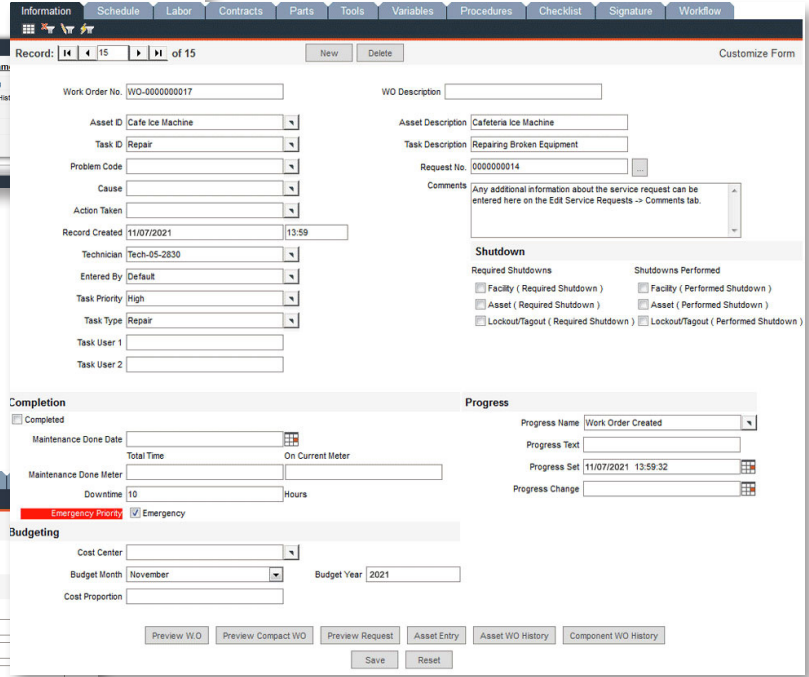
MORE SCREENSHOTS

Enhanced Reports
Asset Reports
Task Reports
Work Order Reports
Service Request Reports
Part Reports
Staff Reports
Tool Reports
Variable Reports
Program Reports
Open PM Reports
Multitask PM Reports
Route PM Reports
Multitask Work Order Reports
Calibration Reports
Completed PM Reports
Completed Work Order Reports
Open Work Order Reports



FaciliWorks is available in English and Spanish and can be adapted to Chinese, French and German through Google Translate.

The configurable FaciliWorks dashboard displays a summary of the items that need your attention for the day, allows you to easily navigate to any feature of the software and lets you create your own shortcuts to get quick access to the features you most frequently use.

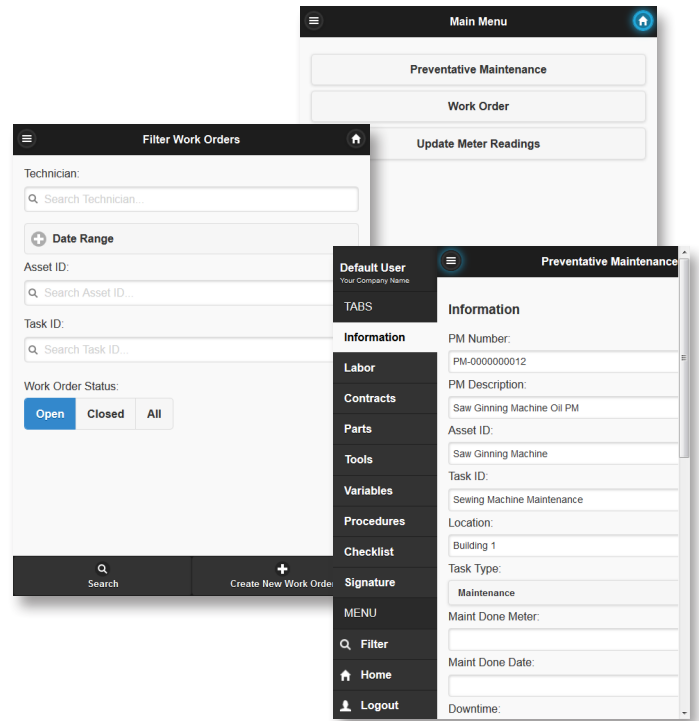


The FaciliWorks user interface is easy to learn and use; the consistent layout of data entry screens allows for easy navigation and quick data entry. User-definable fields provide even more flexibility - custom fields can be defined as text, date or list fields.

MOBILE

FaciliWorks Mobile provides an extra layer of flexibility by allowing technicians to enter information about PMs, WOs and meter readings on a mobile device as the work is being performed, eliminating redundancy, minimizing errors and saving time and effort.

- Free with FaciliWorks Enterprise
- Runs in any browser and any mobile device
- Access, edit, close and create WOs
- Access, edit and close PMs
- Update meter readings from the asset location
- Security and asset grouping extend to Mobile
- Quick data retrieval through various inputs including voice, barcode scanning, filtering and smart lists.



REPORTS AND GRAPHS

FaciliWorks includes a broad range of reports so that every user can access pertinent information to improve productivity and make informed decisions.

- Filter for the exact information you need
- Each user can save favorites on the dashboard for quick future access
- Reports are in columnar format, so when exporting to a program such as Excel, data can be easily analyzed and otherwise manipulated
- Reports include your company name, division name and logo and can be viewed on-screen, printed or exported as various file types to send via email
- Use the Custom Report Designer to alter pre-defined reports or to create your own

Select Viewer Type: HTML (Plain) Export To:

Your Company Name
Division Name

Asset Listing

05-14-2021

Asset ID	Description	Asset S/N	Status	Priority	Manufacturer	Type	Curr
	Saw Ginning Machine	ASN-1122-001	Active	High	McGinSaw Manufacturing Industry	Jute Spinning Machine	Build
	SGM for removing cotton fiber from seed.						
	Knife Roller Ginning Machine	ASN-1122-002	Active	Normal	McGinSaw Manufacturing Industry	Ginning Machine	Build
	Classified as oscillatory/rotary knife.						
	Mecharthy Ginning Machine	ASN-1122-003	Active	High	McGinSaw Manufacturing Industry	Ginning Machine	Build
	Double acting Macarthy Gin						
	Bale Plucker	ASN-1122-004	Active	Normal	CnC by Cotton & Cotton	Jute Spinning Machine	Build
	Machine in blowroom line for ring spinning						
	Step Cleaner	ASN-1122-005	Active	Normal	Yarn Equipments and Supplies	Jute Spinning Machine	Build
	Removes the impurities such as leaves, stalk, etc.						

SECURITY, COMPLIANCE AND VALIDATION

FaciliWorks incorporates various levels of security: form-level, individual field-level and group-level security as well as user ID and password management. With security enabled in FaciliWorks, a user's access to forms and fields within forms can be limited; for instance, a user can be allowed to view the Labor form under Work Orders but not be allowed to view the Cost field in that form. FaciliWorks comes with several pre-defined security groups to make security easier to implement, but you can create your own groups as needed.

FaciliWorks offers a number of features that will help users comply with FDA 21 CFR Part 11, ISO 9001:2015, IATF 16949:2016, ISO 13485:2016 and AS9100 standards. By enforcing systematic, structured record keeping, FaciliWorks promotes compliance with many other standards as well.

[MORE COMPLIANCE INFO](#)

The FDA-compliant version of FaciliWorks permanently enables security and the electronic signature and advanced audit log features. In the

standard version of FaciliWorks, these features can be manually enabled and disabled.

The advanced audit log maintains a comprehensive history of all user actions such as record modifications, additions and deletions along with the date and time of each action and name of the user who performed the action. The audit log is indefinitely preserved in the FDA-compliant version of FaciliWorks; however, the standard version of FaciliWorks allows the purging of these records after a set number of days.

FaciliWorks also records signatures and approval signatures upon the completion of maintenance and checklists and the creation of purchase orders. Once a record has been signed, it cannot be modified unless the original signer unsigns it.

Validating FaciliWorks ensures that the software functions as designed under the purchaser's actual conditions. The Validation Kit and our on-site validation services will streamline the process, minimizing downtime and ensuring documentation accuracy in preparation for future audits.

SERVICES

Whether FaciliWorks is your first CMMS software solution or you're upgrading to FaciliWorks from another application, our all-inclusive suite of professional services will minimize your downtime and make the transition seamless. From planning and installation to configuration, data migration, training and ultimate launch, our team can quickly and effectively implement FaciliWorks within your current operating environment.

[MORE SERVICES INFO](#)

One of the most important aspects of a CMMS implementation is training. Though FaciliWorks is easy to use, it is a robust solution with extensive functionality, so training is imperative to ensure consistent data entry by all users and proper use of the software in daily operation. Formal training is the best way to accelerate your company's ROI and realize the full benefits of FaciliWorks.

[MORE TRAINING INFO](#)

IT GETS EVEN BETTER.

FURTHER STREAMLINE YOUR WORKFLOW, IMPROVE PRODUCTIVITY AND REDUCE COSTS WITH ANY OR ALL OF THESE ADDITIONAL FACILIWORKS PRODUCTS.

The **Maintenance Label Printer** lets you create highly durable, laminated, bar-coded labels for all of your equipment directly out of FaciliWorks. The harsh-environment labels are resistant to moisture, temperature extremes, industrial chemicals, UV and abrasion and are available in a variety of sizes and colors.

FaciliWorks **Web Service Requests** allows an unlimited number of users to submit service requests online, eliminating time-consuming phone calls and written requests, while providing centralized documentation of every service request and its outcome. Each request is automatically routed to FaciliWorks, so the maintenance manager can then delete it or approve it and convert it into a work order.

TaskPro and **SafetyPro** are fully customizable, comprehensive procedure databases that install directly into FaciliWorks to save you the time and trouble of creating the procedures from scratch. TaskPro is comprised of maintenance procedures covering 250 different topics related to facility and equipment maintenance. SafetyPro is comprised of step-by-step safety checklists to assist with OSHA compliance, covering 40 different topics including fire protection, stairs and stairways, hand tools and just about anything else you might need.

Incorporating **Calibration Management** with your FaciliWorks software combines all of the CMMS functionality with the power of our GAGetrak® software to deliver an all-in-one solution. Calibration Management includes gage entry, calibration scheduling, tracking of gage locations, retrieval of calibration records, production of calibration certificates and the ability to track the as-found condition of gages.

The **Validation Kit** helps you establish and document FDA validation of FaciliWorks. It includes a guide which serves as the basis by which the software is validated and a sample validation database. Our on-site validation services streamline the process even further, guaranteeing documentation accuracy and minimizing downtime.



CONTACT US

Not sure which version of FaciliWorks is right for you? One of our FaciliWorks experts will gladly advise you on the ideal version, setup and use of FaciliWorks for your company's unique needs, goals and compliance requirements.

Contact us today for your free personalized web demonstration and you'll see how easy it is to master your facility's maintenance with FaciliWorks.



1-800-776-3090

+1 (480) 295-3465

sales@cybermetrics.com

support@cybermetrics.com

<https://faciliworks.com>

[FREE WEB DEMO](#)

[REVIEWS & TESTIMONIALS](#)

[SYSTEM REQUIREMENTS](#)

ABOUT US

Our software solutions save time, save money and simplify your job. Many thousands of facilities worldwide, of every size and in virtually every type of industry, use our products to manage their assets, gages, calibrations and preventative maintenance.

When you invest time and money in a software solution, it's important to choose a provider with a solid, long-standing reputation. CyberMetrics has been in business since 1988, so rest assured that our team of professionals will be available to you, providing on-going support, education and consultation services, making sure you get the most out of your investment.



<https://cybermetrics.com>

Corporate Headquarters
1523 W. Whispering Wind Drive
Phoenix, Arizona 85085

