

Hybrid Work Trends Report

July 2022



Our Story

1. Founded in 2009, WorkInSync has been an industry leader in building **global software solution** for over a decade.
2. A rich customer base of **200** organizations globally, including **62** Fortune **500** companies
3. Founders with **30+ years of experience** in building world class software products at Motorola and Microsoft.
4. **4.4 / 5.0** App Ratings on Google Play Store with over 500K downloads
5. We are an **ISO 27001** and **ISO 27701** certified company and we are **GDPR** compliant.

Our Investors

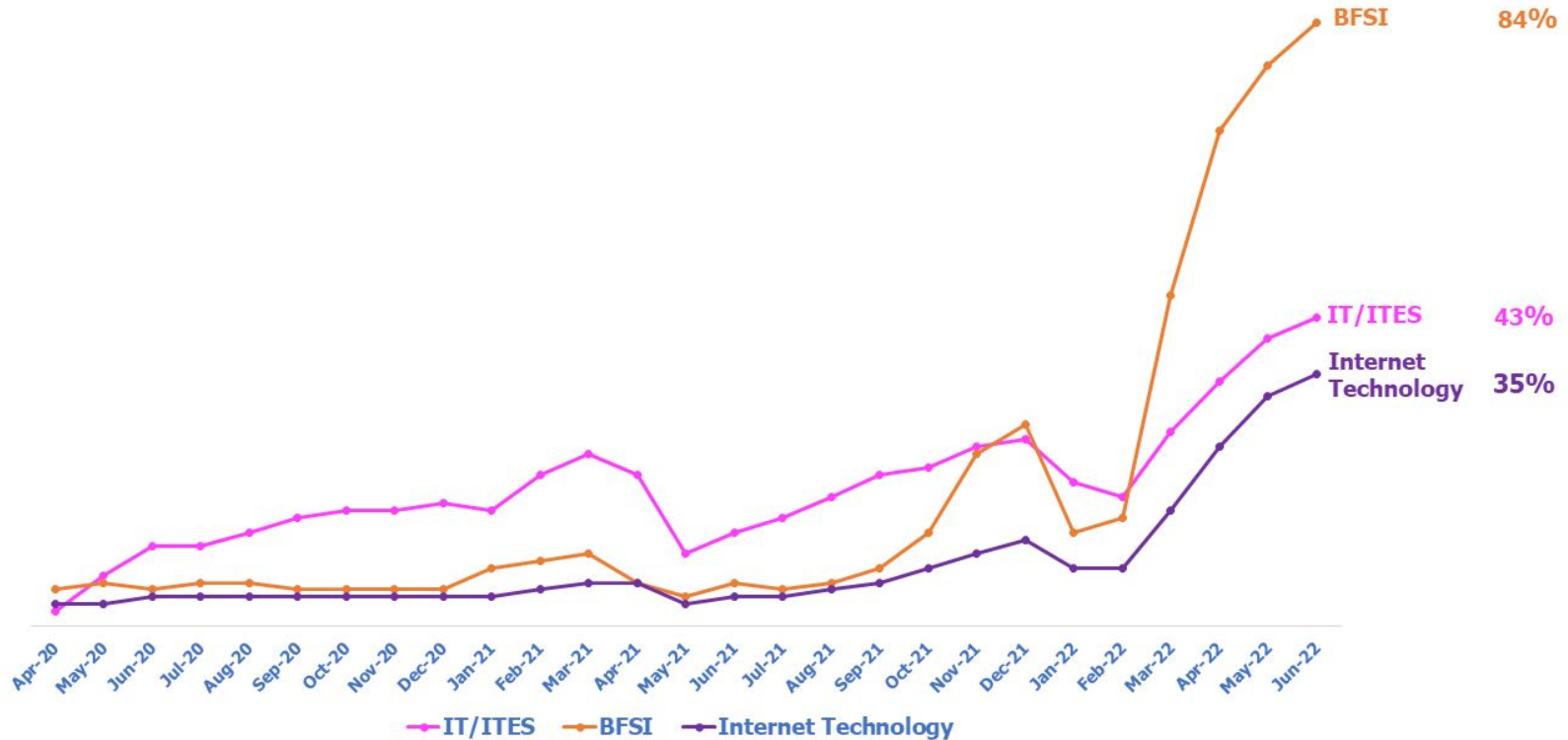


Overall Return-to-Office (RTO) is 59% of pre-Covid levels



RTO Index: Monthly Active Users as a % of Mar'20 (Pre-Pandemic) Active Users
Source: Data based on usage details of WorkInSync platform by 300,000+ employees

BFSI sector leads the RTO followed by IT & ITeS sector

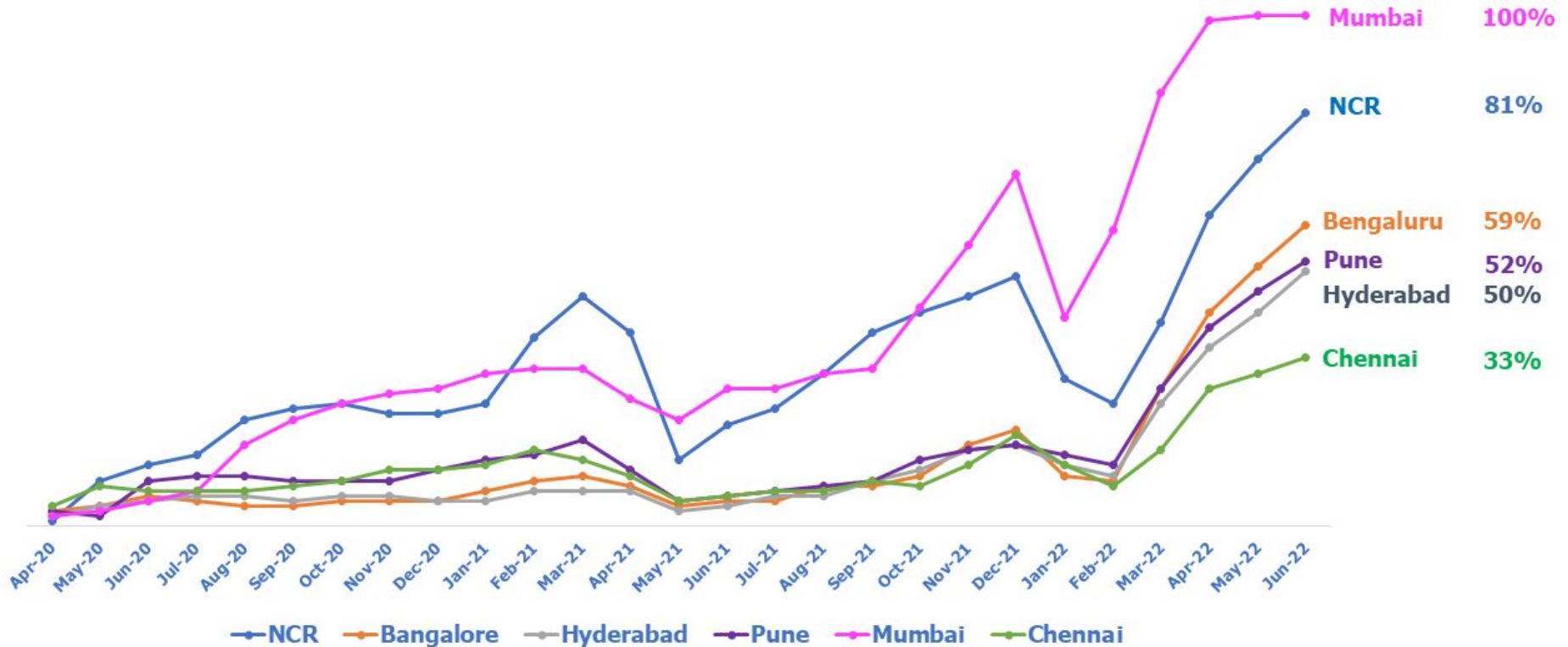


Examples of BFSI Companies (Deutsche Bank, Societe Generale, JP Morgan Chase etc.), IT & ITeS Companies (Wipro, Infosys, IBM etc.), Internet Technology Companies (Google, Microsoft, Meta etc.)

RTO Index: Monthly Active Users as a % of Mar'20 (Pre-Pandemic) Active Users

Source: Data based on usage details of WorkInSync platform by 300,000+ employees

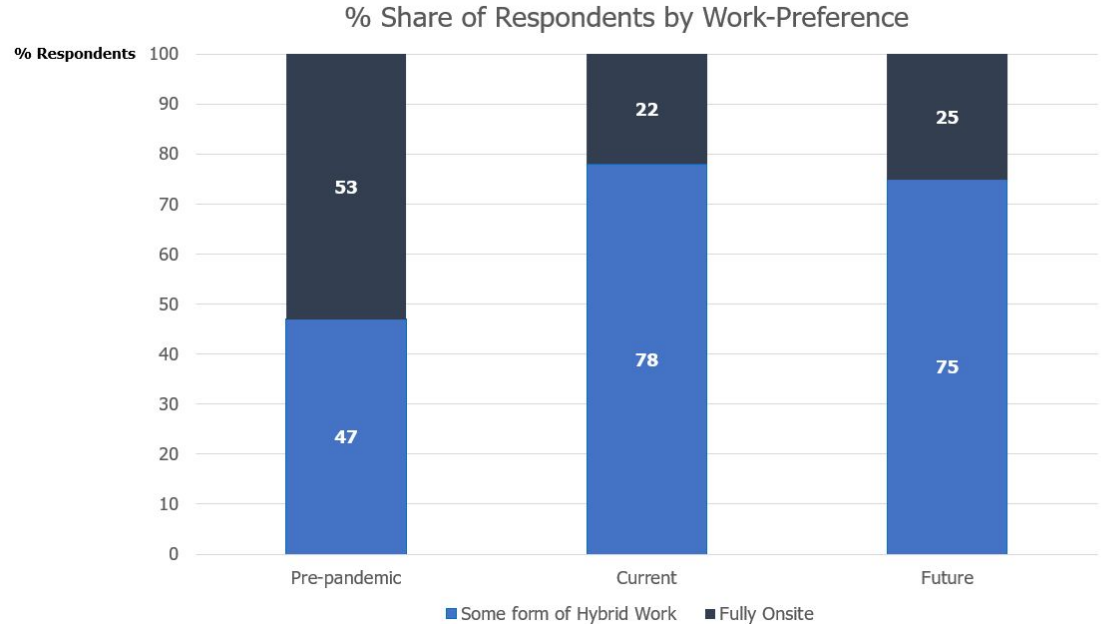
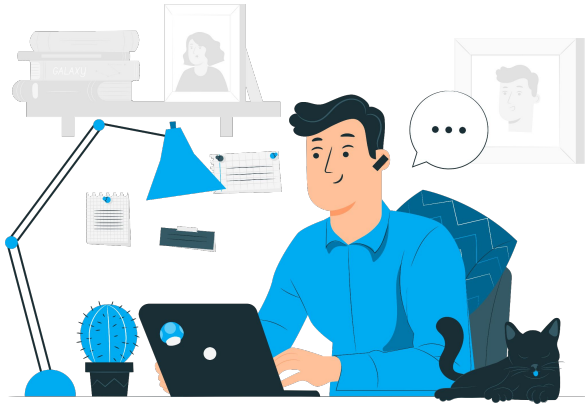
Mumbai leads RTO followed by Delhi-NCR & Bengaluru



RTO Index: Monthly Active Users as a % of Mar'20 (Pre-Pandemic) Active Users
 Source: Data based on usage details of WorkInSync platform by 300,000+ employees

With RTO, employees now prefer Hybrid Work Models

78% Employees Prefer Hybrid Work Model in the Post-Pandemic Scenario



Source : Mckinsey Report - "Hybrid work: Making it fit with your diversity, equity, and inclusion strategy", April 2022

Factors That Make Hybrid Work a Win-Win



Talent Retention

54% of employees surveyed globally, would consider leaving their job if they are not afforded some form of flexible work model



Productivity increase

13%-24% productivity increase observed in employees adopting hybrid work model



Cost Savings

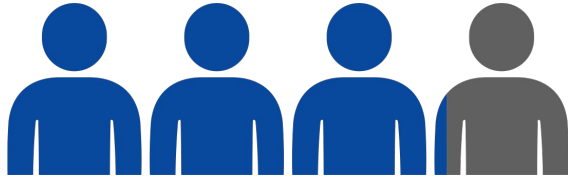
Estimated savings of **\$ 11,000** per employee a year by adopting hybrid work model

Source: Prof. Nick Bloom 's Research - Stanford University

Employees are now working ~8 days per month from Office



On average, **43%** of employees work from office **1-5 days**



31% employees work from the office between **6-10 days**



26% of employees come to the office for **more than 11 days** in a month

 Equals 10% data

Source: Data based on WorkInSync platform by 51,000 employees in the month of June-2022

Indian employees check-in later than employees outside India



**Indian
employees
11am-1pm**



**International
employees
7am - 10am**



Source: Data based on WorkInSync platform by 51,000 employees in the month of June-2022

More % of male employees check-in earlier than female employees

Male Employees



35% of the Males check-in between 6AM and 9AM (Indian Sites)

Female Employees



32% of the females check-in between 6AM and 9AM (Indian Sites)

Source: Data based on WorkInSync platform by 51,000 employees in the month of June-2022

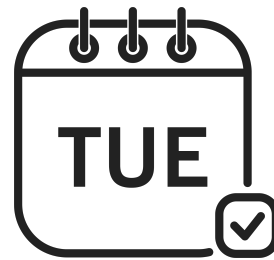
Wed, Thu and Tue are Preferred Days to Work from Office. **In that order.**



25%



23%



20%



16%



13%

Source: Data based on WorkInSync platform by 51,000 employees in the month of June-2022

Employees spend on an average 9 Hours/Day in office

In Startups



9.5 Hours/Day

In Enterprises



9 Hours/Day

Source: Data based on WorkInSync platform by 51,000 employees in the month of June-2022

Female employees spend more time in office



Male employees spend on an average **9 hours** in office



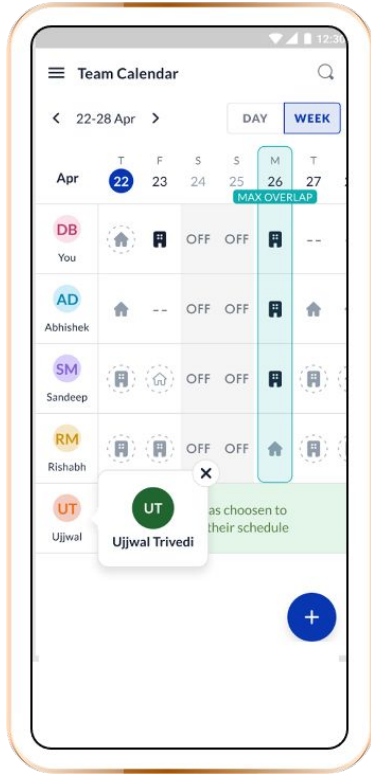
Female employees spend on an average **9.5 hours** in office

Source: Data based on WorkInSync platform by 51,000 employees in the month of June-2022

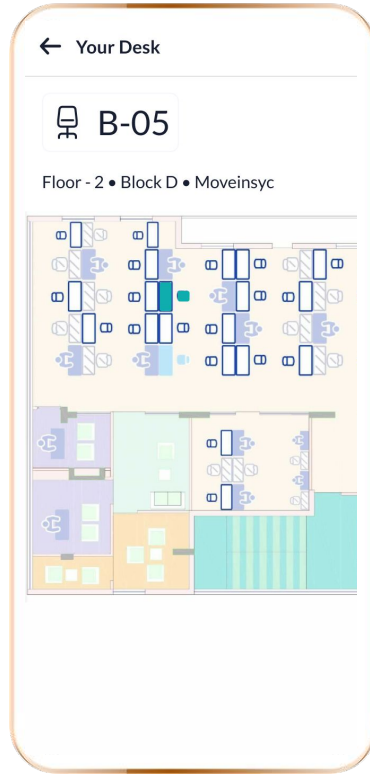
WorkIn sync - an integrated Hybrid Workplace SaaS Platform



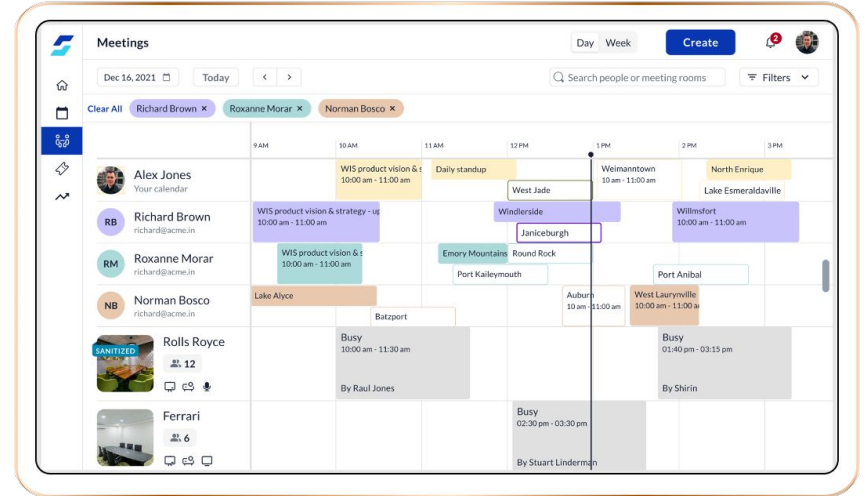
...with an Intuitive User Interface, ...



Team Calendar



Desk Booking



Meeting Room

Employee Collaboration features are a key differentiator

The image shows a meeting booking interface with a calendar view. A modal window is open for booking a meeting. The modal includes a section for adding guests, a date selection grid, and options for remote joining and room selection. A confirmation screen is also visible on the right.

Meetings

Mar 7, 2022 Today < >

9 AM

Alex Jones
Your calendar

Rolls Royce
12
[Microphone icon]

Ferrari
6
SANITIZED

3

Add Guests

5 Guests
3 Working from Office • 2 Working from Home

For in-person meeting, pick one of these dates

Mar 7 3 WFO 2 WFH	Mar 8 5 WFO 0 WFH	Mar 10 4 WFO 1 WFH	Mar 11 3 WFO 2 WFH	Mar 12 1 WFO 4 WFH
-------------------------	--------------------------------	--------------------------	--------------------------	--------------------------

This would override your current date

Allow joining remotely

Add Zoom link **Add Teams link**

Add Room >

Available

Meeting created

Mon, Mar 8 • 02:00 pm - 03:00 pm

Weekly Updates

Cherry Blossom • Floor 1 • Alpha Block

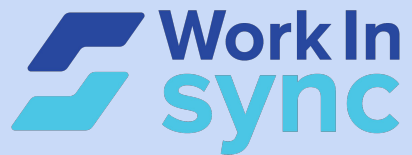
A few of your guests are WFH on the selected date

Request to attend

Confirm

While booking meetings, letting an organizer to choose a day when more people can meet face to face

Or the organizer can nudge teammates to attend the meeting in person



Deepesh Agarwal
CEO, Co-Founder
deepesh@workinsync.io