

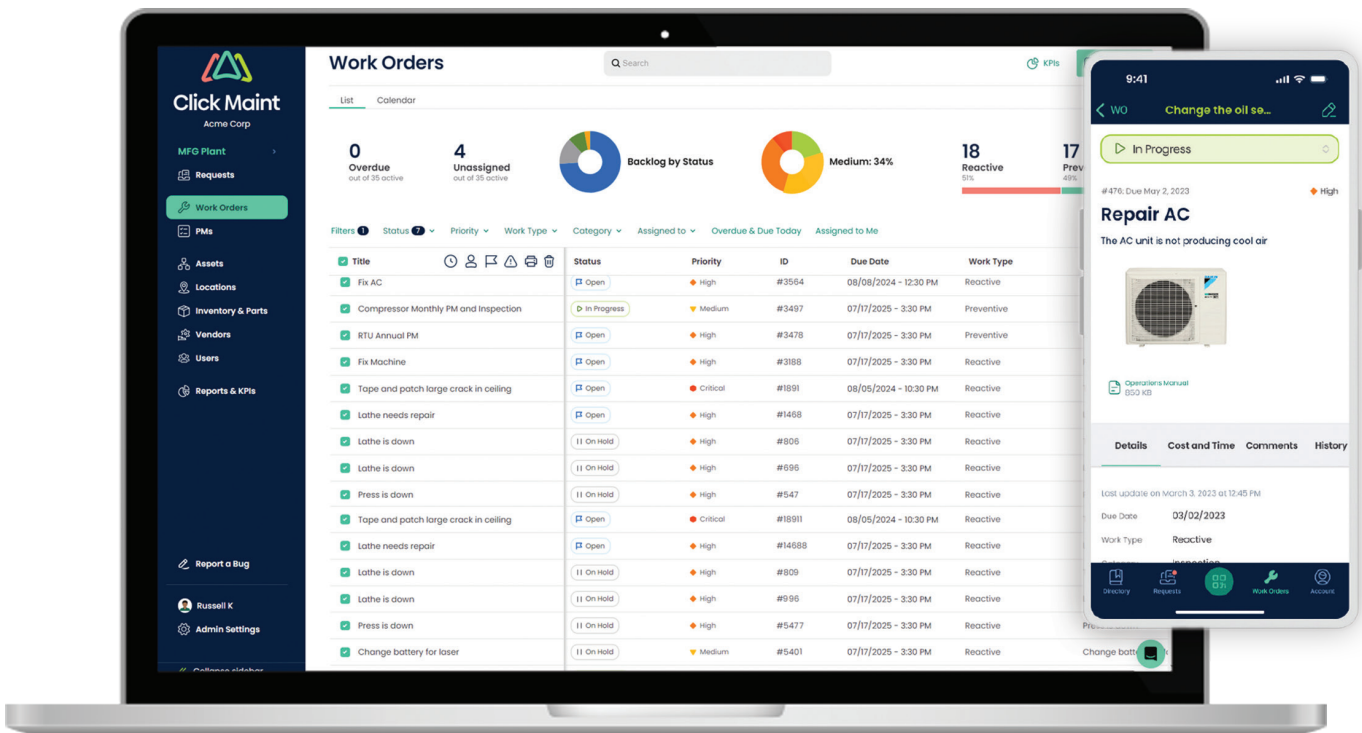
# Streamline managing work orders, PMs, & assets

## Reduce downtime & costs

Only **\$35/month** per user

### Subscription includes

- ▲ Work Order Management
- ▲ Asset & Equipment Management
- ▲ Preventive Maintenance
- ▲ Vendor Management
- ▲ Maintenance Requests
- ▲ Parts & Inventory Management
- ▲ Resource & Labor Management
- ▲ Reports & KPIs
- ▲ Web & Mobile App
- ▲ QR Code Scanning
- ▲ Lifetime Customer Support



**Optimize Your Maintenance Operations with Click Maint CMMS**

 **Click Maint**  
Maintenance Software  
Easy AS 1-2-3




## How does Click Maint compare with other CMMS providers?



▲ Rating scores are / 5 and updated June 2024

▲ Pricing is based on plans including unlimited requesters, labor & time tracking, and reports.

▲ Pricing was verified on providers' websites.




	 Click Maint	MaintainX	 UpKeep	 Limble
Price per user/month	\$35	\$49	\$45	\$69
Overall Rating	4.9	4.8	4.6	4.8
Ease of Use	4.9	4.8	4.6	4.8
Customer Service	5.0	4.8	4.7	4.9
Features	4.8	4.5	4.4	4.7
Value for Money	5.0	4.7	4.6	4.7



▲ Rating scores are / 10 and updated June 2024

▲ Pricing is based on plans including unlimited requesters, labor & time tracking, and reports.

▲ Pricing was verified on providers' websites.

	 Click Maint	Fiix	 UpKeep	 Brightly
Price per user/month	\$35	\$49	\$45	Not available
Ease of Use	9.8	8.9	9.0	8.3
Ease of Setup	10	8.3	8.5	7.8
Ease of Admin	9.7	8.7	8.9	8.2
Quality of Support	9.7	9.1	9.0	8.5

### Software Advice

Apr. 30, 2024

Overall: ★★★★★

"It is easy to use and the customer support is great. This software was really easy to set up and get our staff using it"

**Ronald C.**  
Sales  
Construction  
11 to 50 Employees

### GetApp

Apr. 28, 2024

Overall: ★★★★★

"Click Maint is Fabulous for your everyday Business Needs"

**Claire Y.**  
General Manager  
Hospital & Health Care  
51 to 200 Employees

### Capterra

Apr. 13, 2024

Overall: ★★★★★

"Great app for maintenance requests and work orders"

**Mel F.**  
Instructor  
Education Management  
501 to 1000 Employees