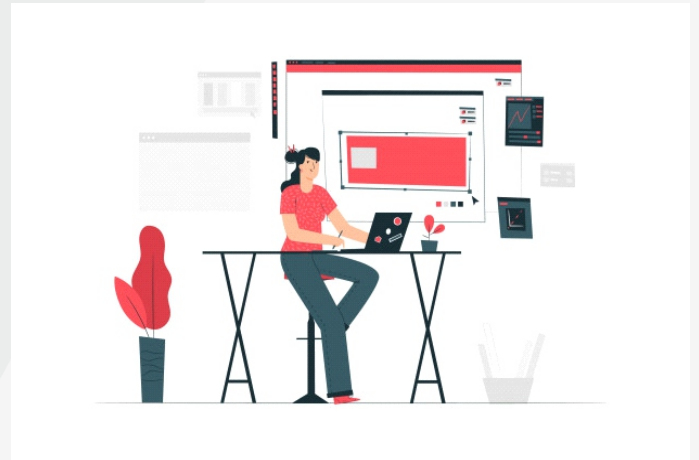


# StaffCop Use Cases

## Employee monitoring

Lucy, a company's on-site designer, claims to have a lot of tasks from different departments. This is her excuse not to accept any new tasks or accept them with unreasonably long due dates. With StaffCop installed on her PC the management reveals that she spends only 16% of working time on the company's tasks, as the majority of her time she spends on performing freelance jobs. No one knows, for how long this situation has been lasting and it's hard to count the amount of salary that the employer has spent for other companies' orders. This situation can be prevented with StaffCop, moreover - if Lucy knew that her working time was being assessed, she would never have done this.



## Information security



Bob, a sales-manager, uses a customers database in the form of Excel spreadsheet. He is not sure if he's going to stay with the company for the next year and he has started seeking for other vacancies. Suddenly, he receives an offer from a competitor to sell customers database. As Bob is not loyal to the company any longer he sees no obstacles in accepting this offer. He sends the excel spreadsheet from his corporate e-mail to an e-mail address outside the corporate network. Or copies the file to a USB drive. In both cases, the security officer gets an alert on this action. The latter probability can be avoided by implementing a USB blocking policy. Moreover, the incident could be prevented at the initial stage, if the security officer noticed in the report that Bob started visiting job searching web-sites.

## Remote administration

Jim, a system administrator, receives complaints about low performance of the workstations in a remote office in a neighboring town. He opens StaffCop, runs the hardware inventory report and sees that the expensive CPU and RAM that were installed last month were replaced with the cheaper analogues two days ago on a couple of workstations. Jim takes a business-trip to the remote office for further investigation and while being there he receives a complaint from the main office: one of the employees reports a software problem that has paralyzed his work. Jim opens StaffCop admin console, connects remotely to this employee's workstation, takes control over his keyboard and mouse, and resolves the issues.

