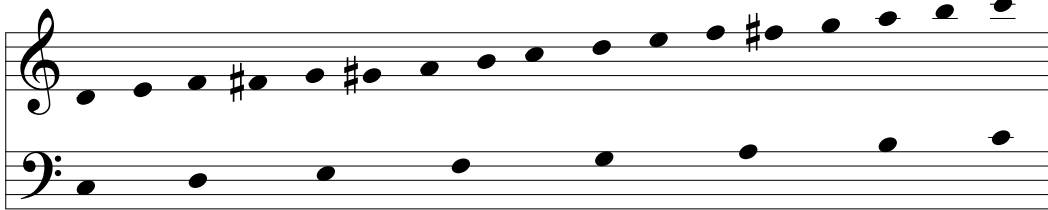


Let Us Ever Walk with Jesus

3 Octave Handbells

Level II

3 Octaves
Handbells used: 25



LASSET UNS MIT JESU ZIEHEN

Georg G. Boltze, 1788

Arranged by John A. Behnke (ASCAP)

A joyful walking tempo, ♩ = c. 108

Musical notation for the main body of the piece, featuring a 4/4 time signature, dynamic markings (*mf*), and performance instructions (R, LV). The notation is divided into six measures, with measure numbers 1 through 6 indicated above the staff. The right hand (R) and left hand (LV) parts are clearly marked.

LV—The bass line shared between both clefs should be sustained as indicated by LV.

Copying or reproducing this material in any form is illegal.

Copyright © 2005 Concordia Publishing House
3558 S. Jefferson Avenue, St. Louis, MO 63118-3968
All Rights Reserved Printed in U.S.A.

4

20 21 22

LV LV R LV

23 24 25 26

LV LV LV R LV

27 28 29

a tempo

mf

LV LV LV LV LV

30 31 32

LV LV LV LV LV LV

6

46

47

48

49

50

51

52

53

54

55

56

57

58

71 72 73

LV R

This system contains measures 71, 72, and 73. Measure 71 features a treble clef with a dotted quarter note followed by an eighth note, and a bass clef with a dotted quarter note followed by an eighth note. Measure 72 has a treble clef with a dotted quarter note followed by an eighth note, and a bass clef with a dotted quarter note followed by an eighth note. Measure 73 has a treble clef with a dotted quarter note followed by an eighth note, and a bass clef with a dotted quarter note followed by an eighth note. The right hand (R) is indicated in measure 73.

74 75 76

LV R

This system contains measures 74, 75, and 76. Measure 74 features a treble clef with a dotted quarter note followed by an eighth note, and a bass clef with a dotted quarter note followed by an eighth note. Measure 75 has a treble clef with a dotted quarter note followed by an eighth note, and a bass clef with a dotted quarter note followed by an eighth note. Measure 76 has a treble clef with a dotted quarter note followed by an eighth note, and a bass clef with a dotted quarter note followed by an eighth note. The right hand (R) is indicated in measure 76.

77 78 79 80

rit. LV R

This system contains measures 77, 78, 79, and 80. Measure 77 features a treble clef with a dotted quarter note followed by an eighth note, and a bass clef with a dotted quarter note followed by an eighth note. Measure 78 has a treble clef with a dotted quarter note followed by an eighth note, and a bass clef with a dotted quarter note followed by an eighth note. Measure 79 has a treble clef with a dotted quarter note followed by an eighth note, and a bass clef with a dotted quarter note followed by an eighth note. Measure 80 has a treble clef with a dotted quarter note followed by an eighth note, and a bass clef with a dotted quarter note followed by an eighth note. The right hand (R) is indicated in measure 79. The tempo marking *rit.* is present in measure 77.