



Providing greater accessibility  
to complex data sets

## TEAM MEMBERS

---

**Meli  
Harvey**

Applications Developer  
(Urban Obscura)



**Paul  
Garabedian**

Marketer/ BD Associate  
(ELLANA Inc.)



**Pragya  
Gupta**

Sustainability Designer  
(Carnegie Mellon  
University)



**Elcin  
Ertugrul**

Applications Developer  
(Thornton Tomasetti)



**Olga  
Bienias**

Architectural Designer  
(ECA)



**Brandon  
Pachuca**

Urban Data Scientist  
(KPFUI)



**How can we move towards  
achieving true data driven  
design?**

 **SPARROW :**

**Provide designers with  
greater accessibility to  
complex data sets.**

**Data**



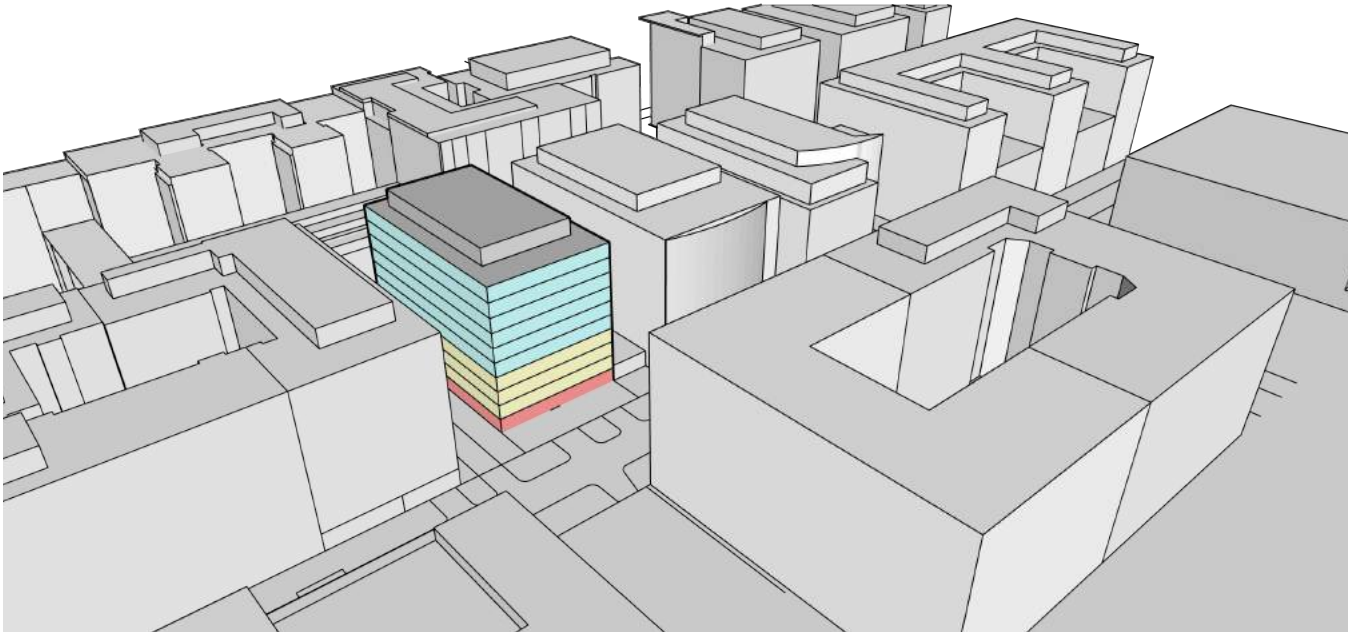
**Web Visualization**



**Rhino**

**Grasshopper**

# Use Case

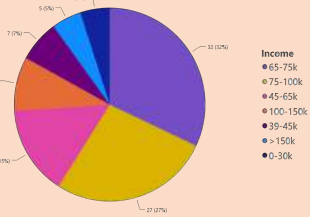


RESIDENTIAL  
HOTEL  
CAFE

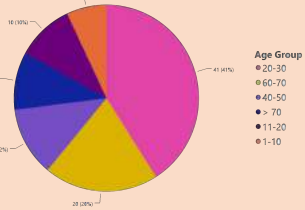
# Use Case

Bringing in layers of demographic data to guide design

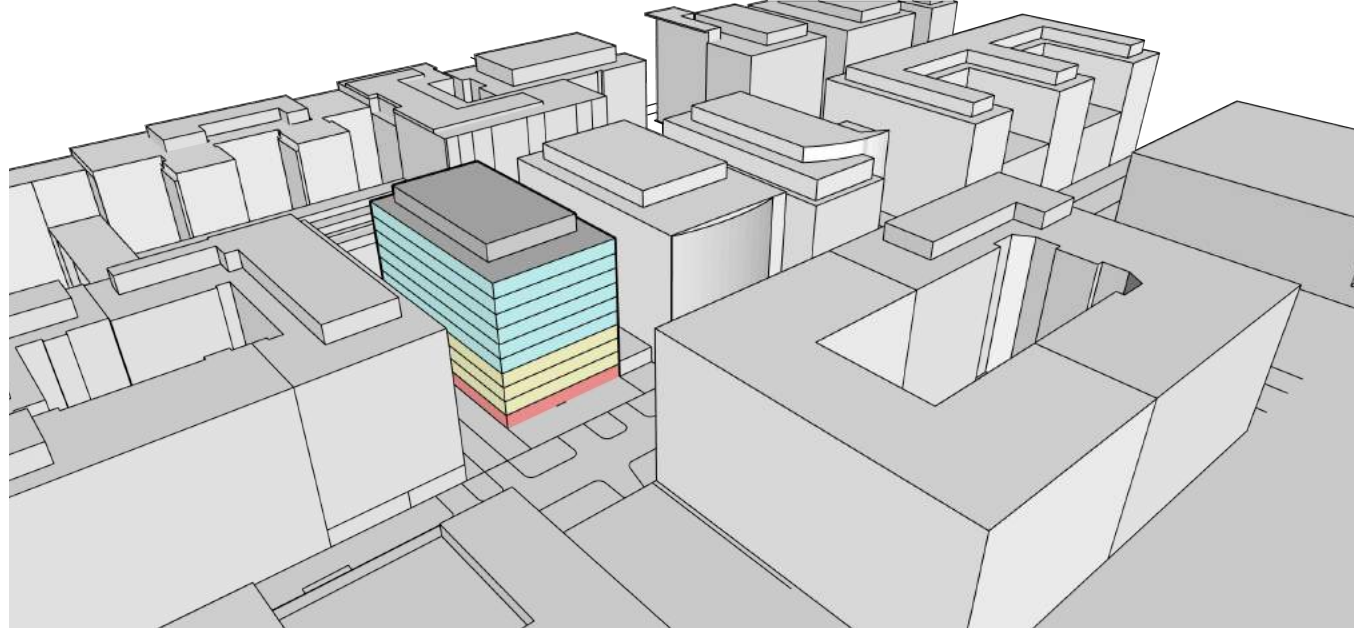
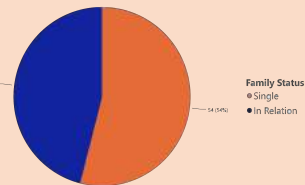
## Income



## Age



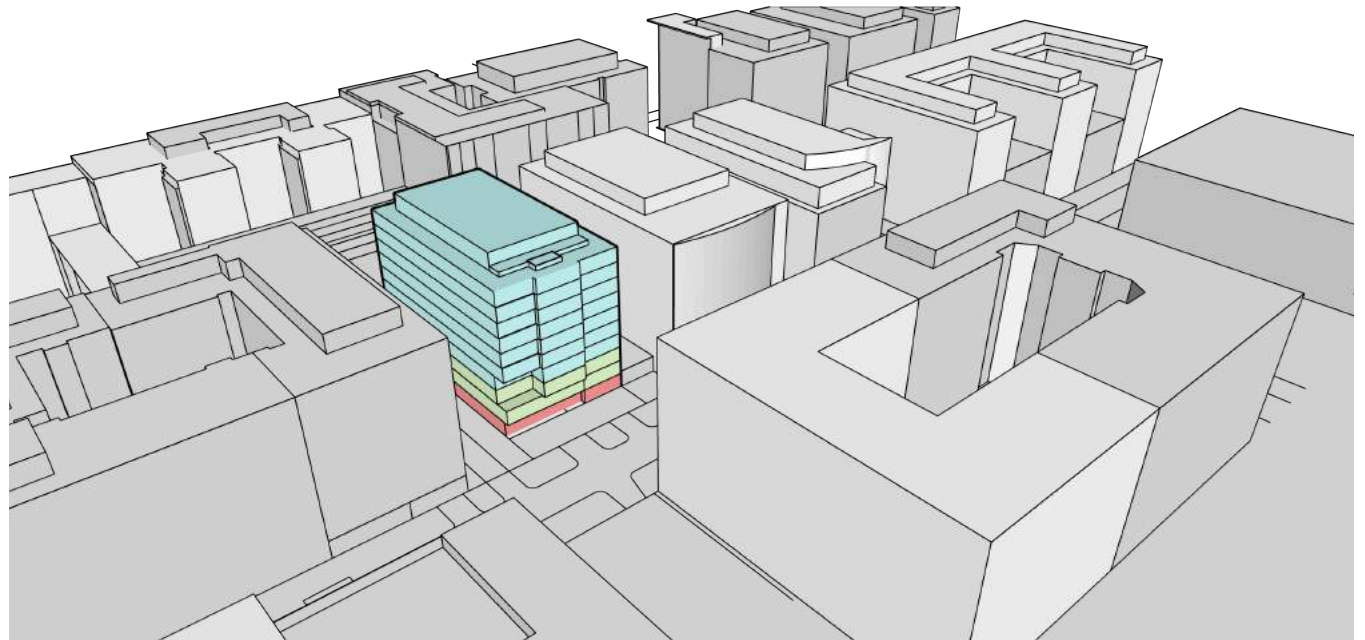
## Family Status



# Use Case

- Updated Design
- Updated Programming
- Re-designed public spaces

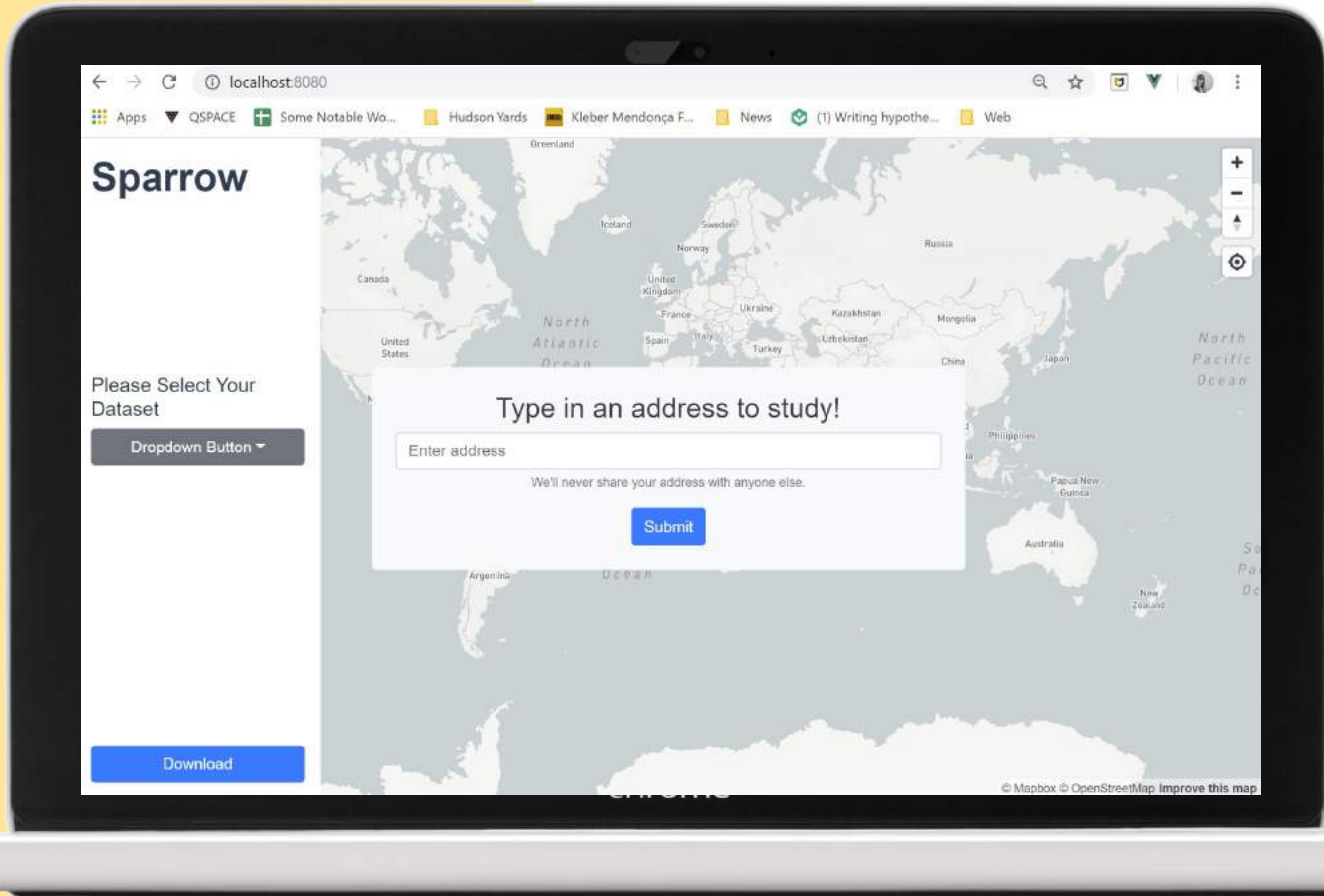
## Data influenced design



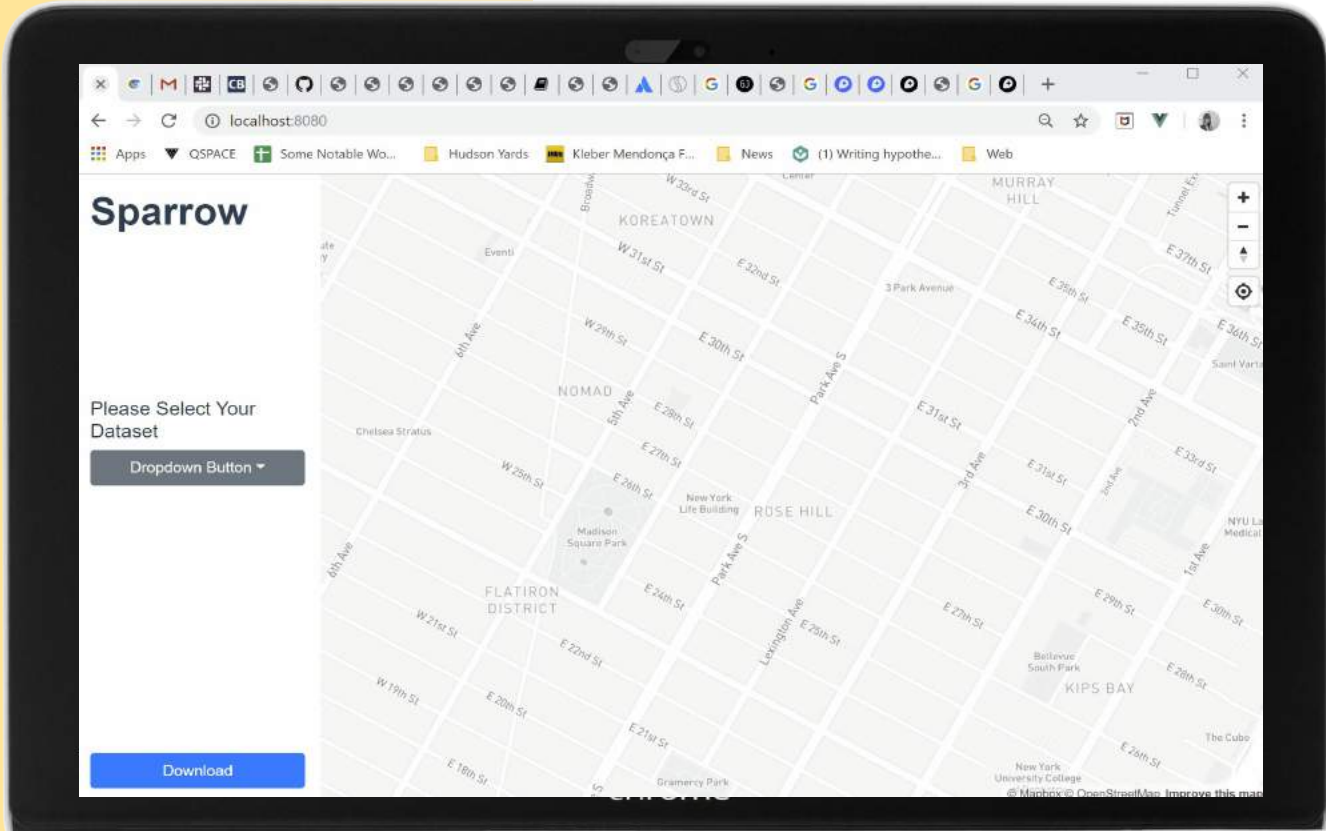
RESIDENTIAL  
CO-WORKING SPACES  
BAR



## WORKFLOW



WORKFLOW

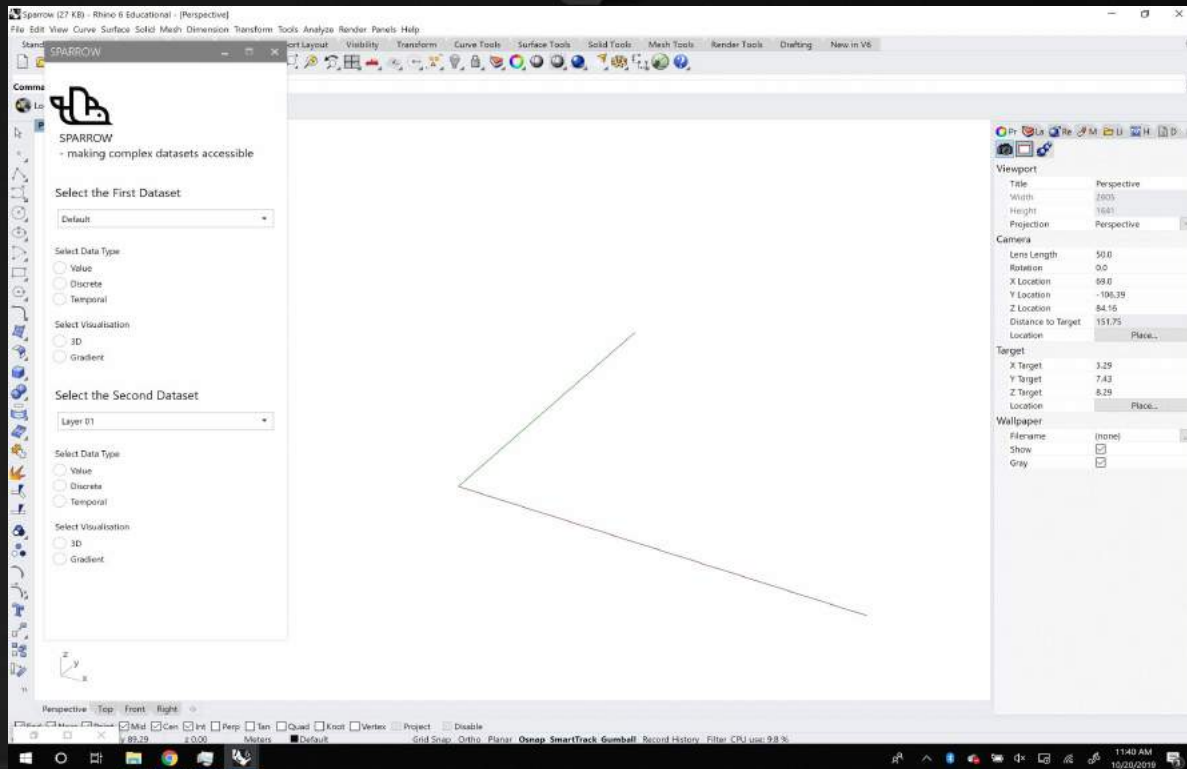


## WORKFLOW

The screenshot shows a web browser window with the address bar displaying `127.0.0.1:5500/export_functions/export.html`. The page content is a simple text box containing the text "Expore to Rhino". The browser's developer tools are open, showing the "Elements" panel with a tree view containing `html` and `body`. The "Styles" panel shows the `element.style` property with a `margin` property set to `0`. The "Console" panel shows the following log entries:

```
I am an export to RHINO function export.js:1
wasm streaming compile failed: TypeError: rhino2dn.js:1713
Failed to execute 'compile' on 'WebAssembly': Incorrect response
MIME type. Expected 'application/wasm'.
Falling back to ArrayBuffer instantiation rhino2dn.js:1714
init export.js:609
```

## WORKFLOW





## FUTURE - WHAT'S NEXT?

---

### 01.

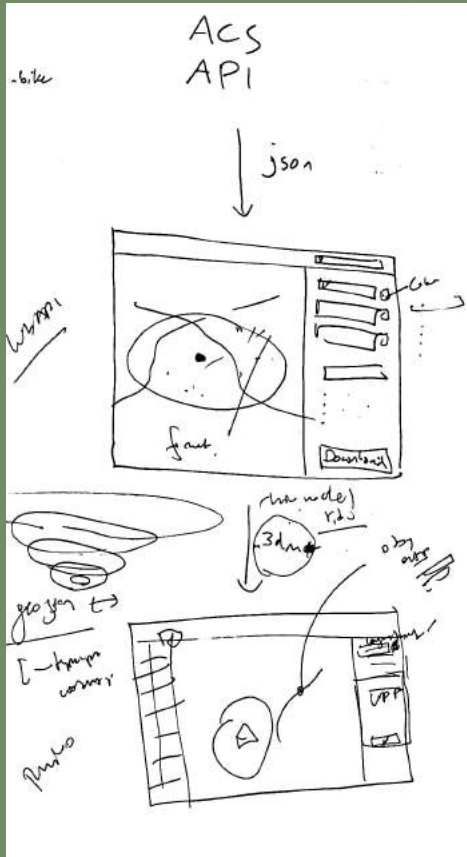
Continuing to make different types of data available

### 02.

The ability to combine disparate data sets for more precise insights

### 03.

Increased visualization options in Grasshopper



# Thanks!

Any questions?

CREDITS: This presentation template was created by **Slidesgo**, including icons by **Flaticon**, and infographics & images by Freepik.

**Please keep this slide for attribution.**

# RESOURCES

- Presentation Layout by [Slidesgo](#) including icons by [Flaticon](#)
- Bird icon - "[Bird](#)" by Matthew Hock
- Laptop image by [Google Slides](#)
- Photo of Future by [Barry Brecheisen/WireImage](#)