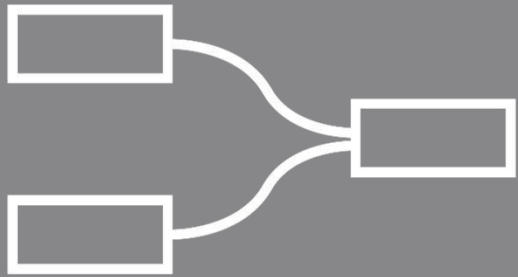


TEAM
NULL STACK

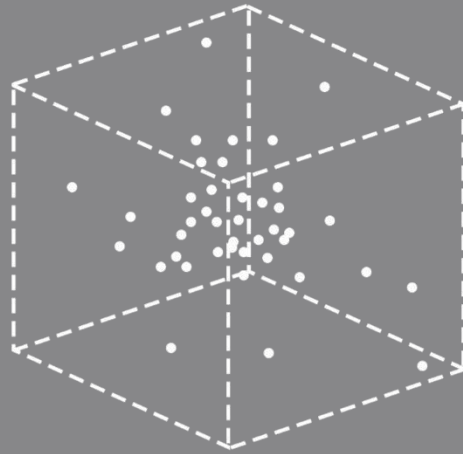


DESIGN SPACE EXPLORATION

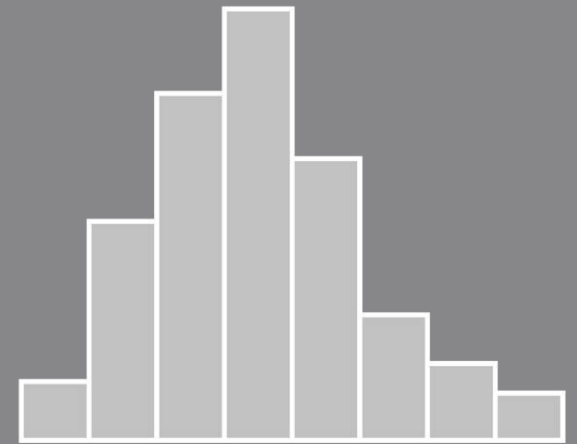
DESIGN SPACE EXPLORATION



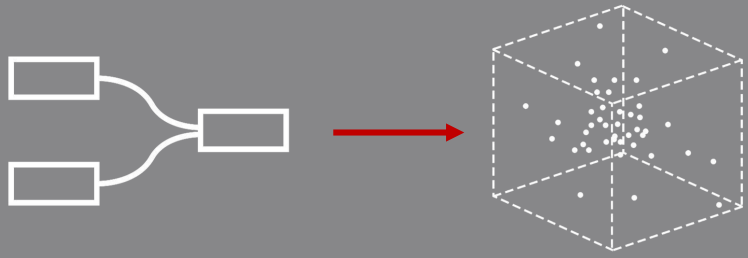
Model



Generate

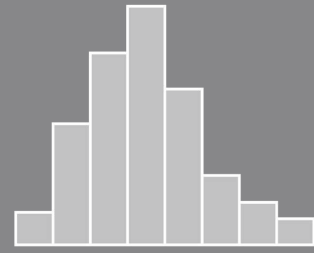


Explore



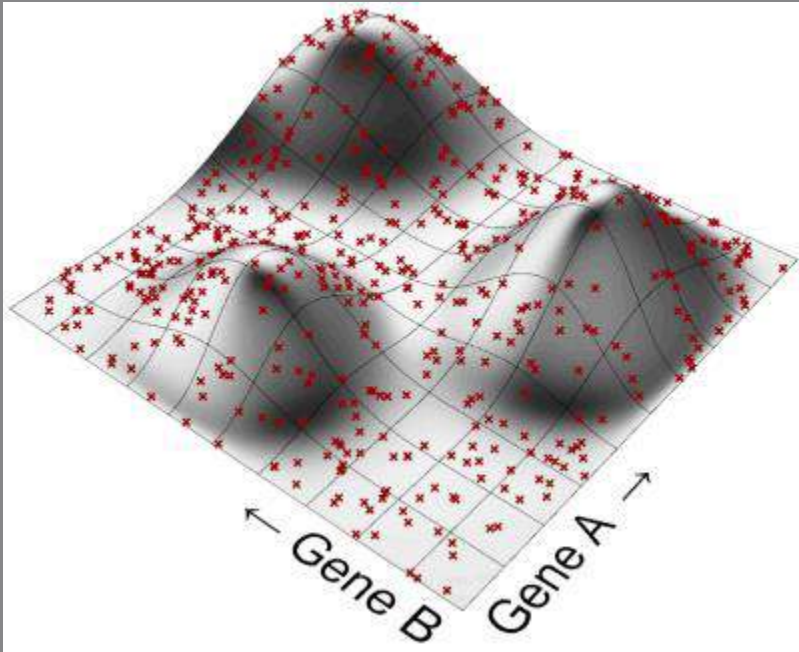
Model

Generate

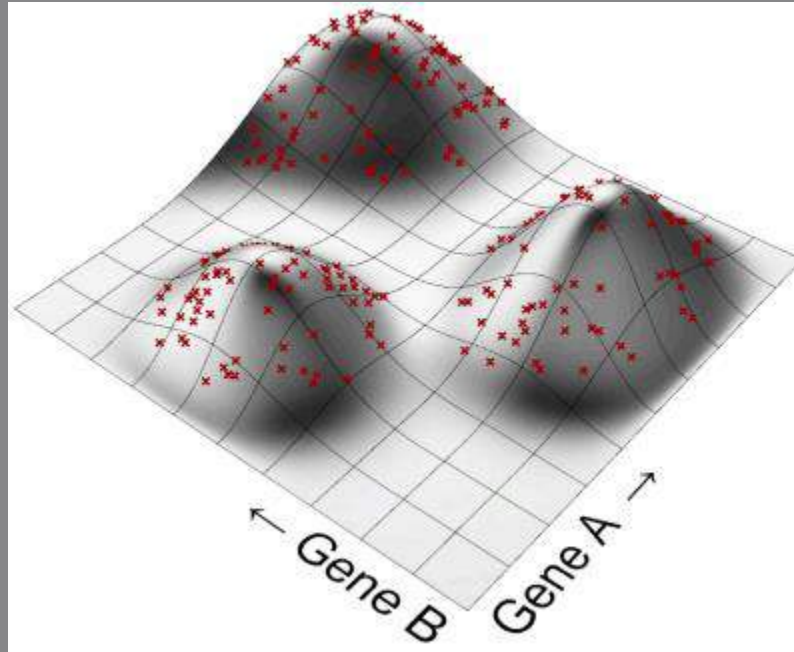


Explore

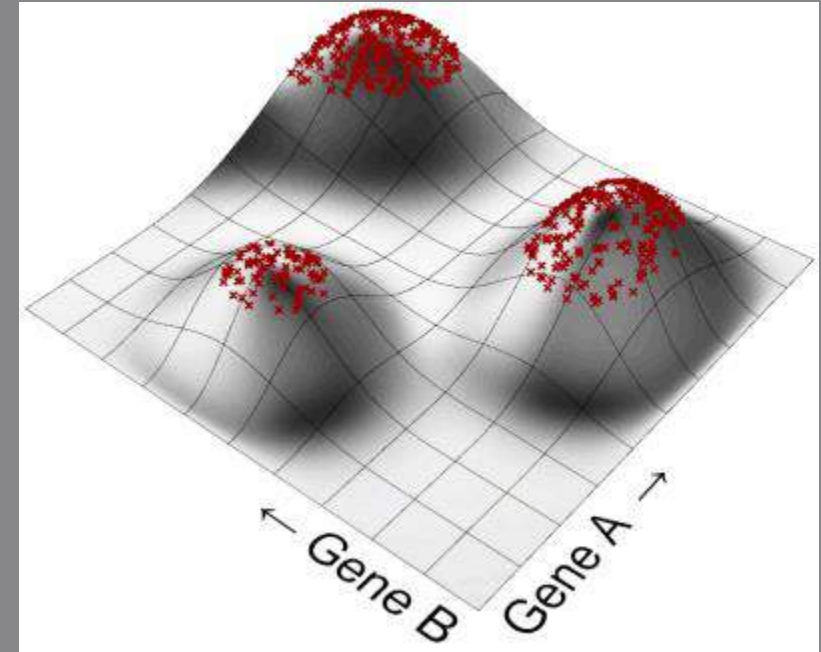
Generation 0

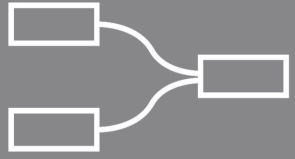


Generation 1

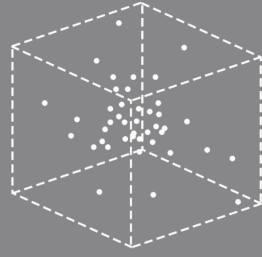


Generation 2

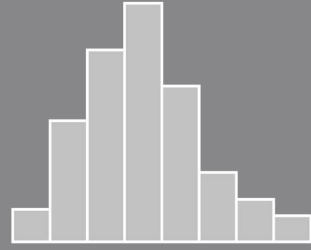




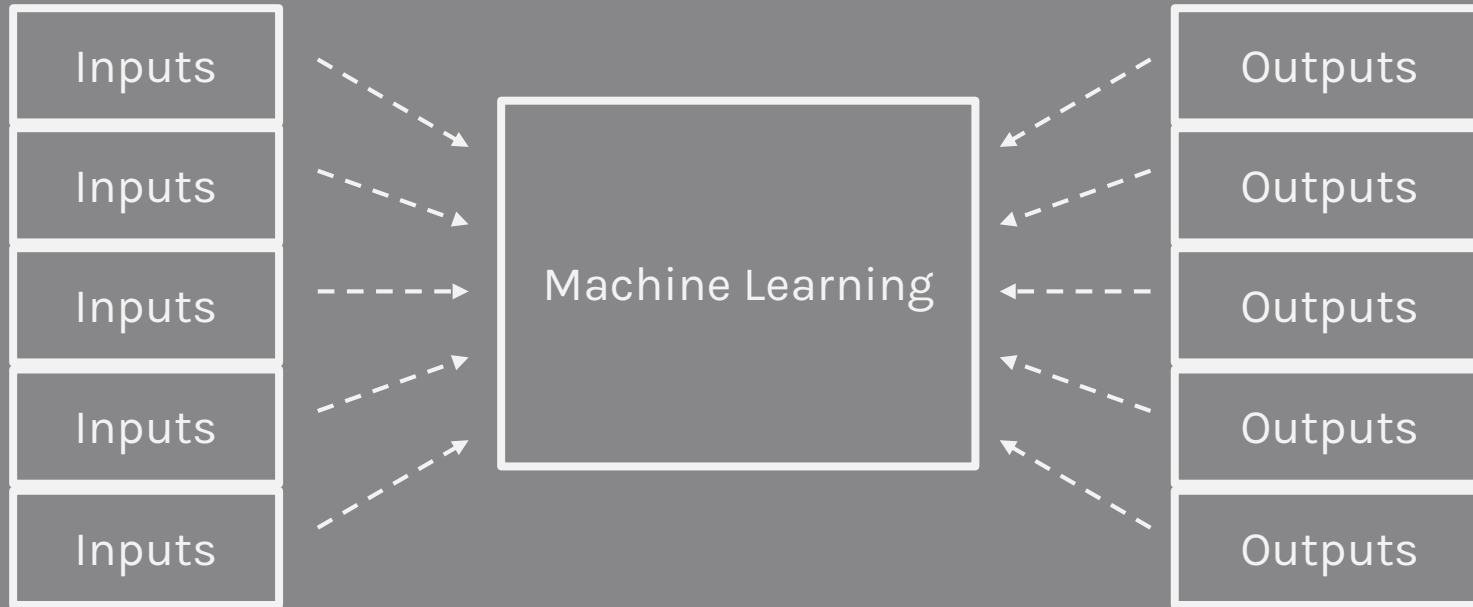
Model



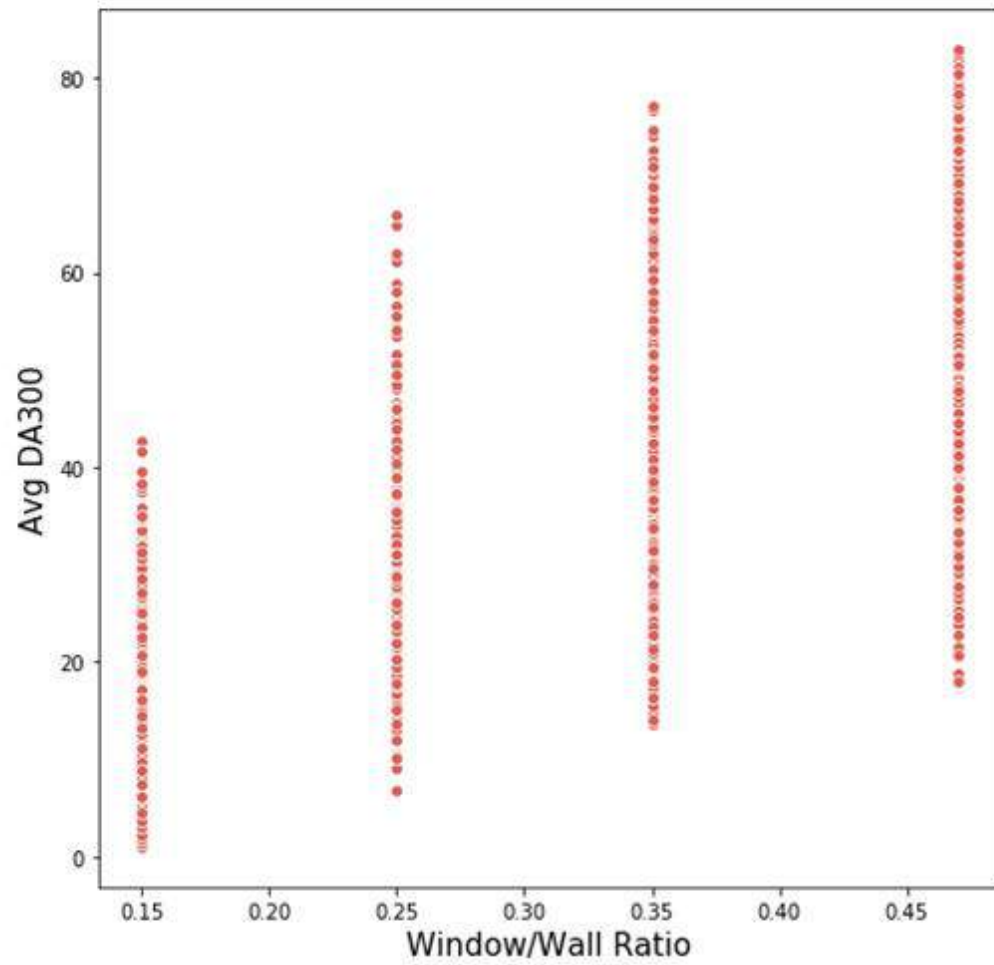
Generate



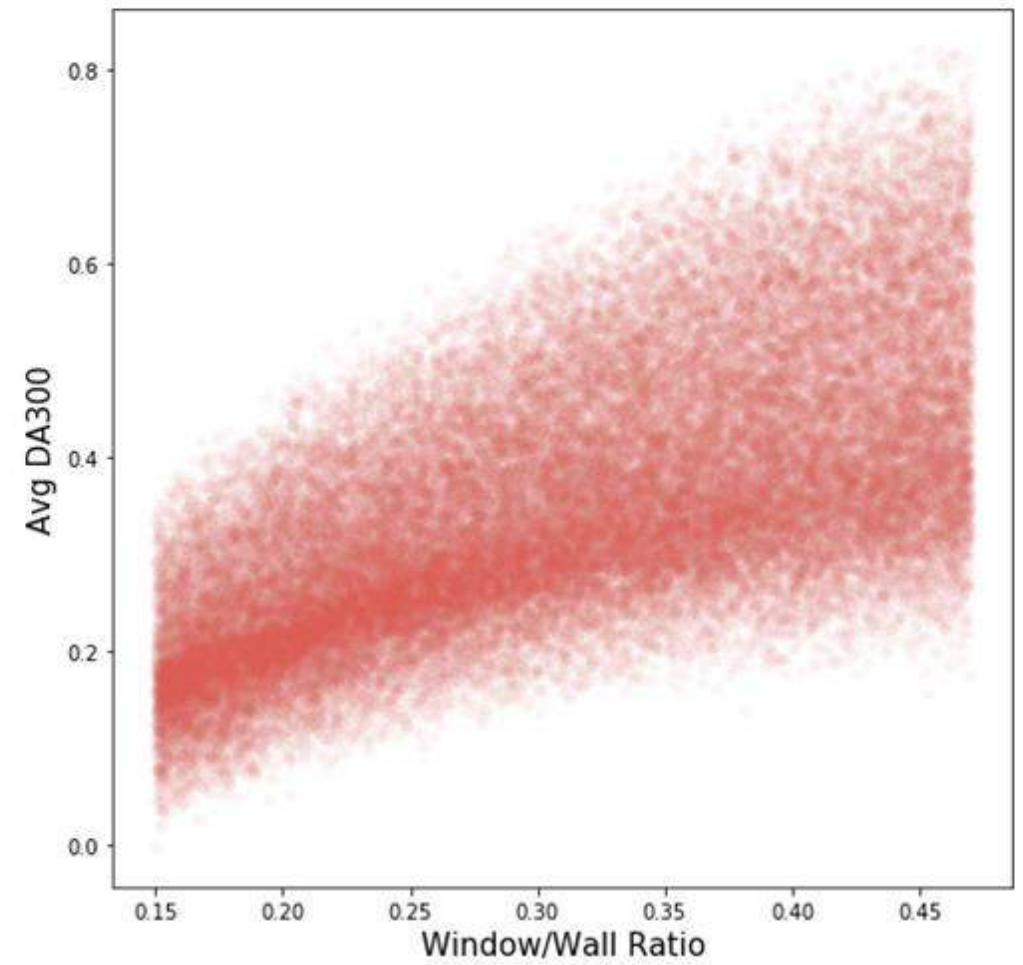
Explore



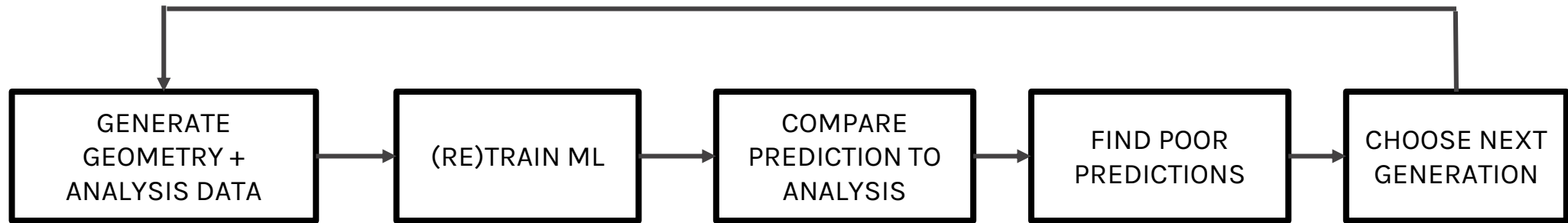
SIMULATED DATA



PREDICTED DATA



PROCESS WORKFLOW



WHAT DID WE GET DONE?

NULL



WHAT DID WE GET DONE?

Server Error in '/' Application.

Exception Unhandled

System.IO.FileNotFoundException: 'Could not load file or assembly

PROBLEMS	1	OUTPUT	DEBUG CONSOLE	TERMINAL
iterations: 170,	training error:	176.04336121740678		
iterations: 180,	training error:	176.04336121740678		
iterations: 190,	training error:	176.04336121740678		
iterations: 200,	training error:	176.04336121740678		
iterations: 210,	training error:	176.04336121740678		
iterations: 220,	training error:	176.04336121740678		
iterations: 230,	training error:	176.04336121740678		
iterations: 240,	training error:	176.04336121740678		
iterations: 250,	training error:	176.04336121740678		
iterations: 260,	training error:	176.04336121740678		
iterations: 270,	training error:	176.04336121740678		
iterations: 280,	training error:	176.04336121740678		
iterations: 290,	training error:	176.04336121740678		
iterations: 300,	training error:	176.04336121740678		
iterations: 310,	training error:	176.04336121740678		
iterations: 320,	training error:	176.04336121740678		
iterations: 330,	training error:	176.04336121740678		

```
/usr/local/share/dotnet/dotnet /Users/mitevpi/Documents/GitHub/daylighting-
===== Training the model =====
===== Evaluating Model's accuracy with Test data =====
* RSquared Score: 1
* Root Mean Squared Error:
* Mean Squared Error:
*****
Predicted SDA300: 0, actual sda: 0.33
*****
done!
```

! IndexOutOfRangeException was unhandled

Index was outside the bounds of the array.

Troubleshooting tips:

- [Make sure data column names are correct.](#)
- [Make sure the index is not a negative number.](#)
- [Make sure that the maximum index on a list is less than the list size.](#)
- [Get general help for this exception.](#)

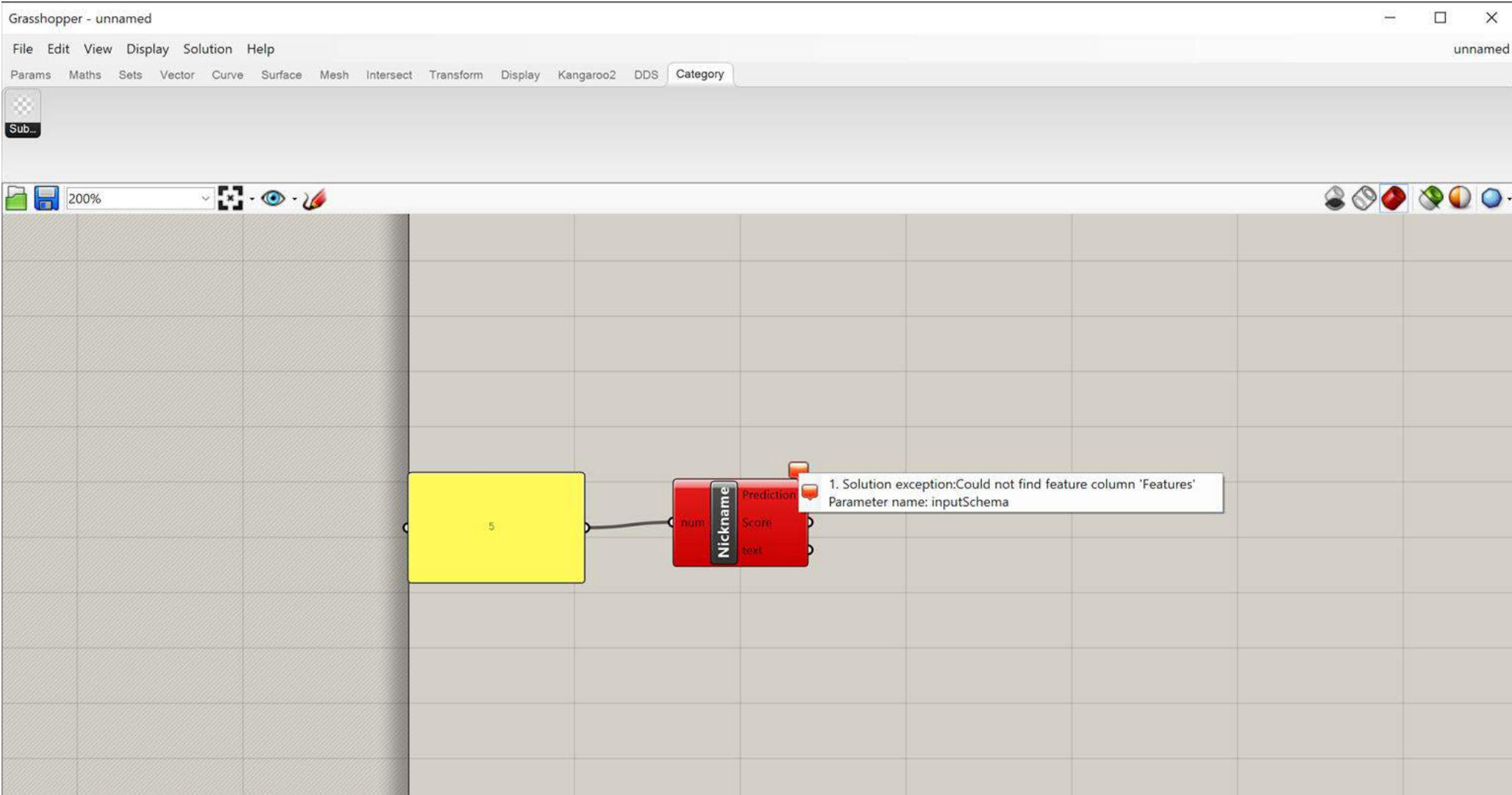
[Search for more Help Online...](#)

Exception settings:

Break when this exception type is thrown

Actions:

WHAT DID WE GET DONE?



WHAT DID WE GET DONE?

Parametric Prediction Feedback to modeling

