

*Eddie Bauer*

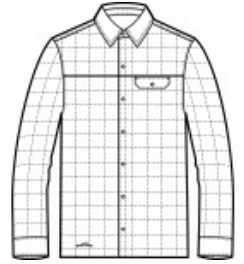
**Eddie Bauer® Shirt Jac. EB502**



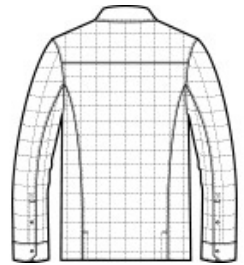
Midweight jacket warmth meets collared shirt style in this shirt jac that blurs the line between the great outdoors and indoors. Snap-front closure and snap cuffs. Drop-in left chest pocket. Contrast Eddie Bauer heat transfer logo on the right hem. Made of 100% polyester fabric and 1.8-ounce, 100% polyester fill. Water-resistant with a PU coating.

**CARE INSTRUCTIONS**

Machine Wash Cold, Inside Out With Like Colors, Do Not Use Fabric Softener, Only Non-Chlorine Bleach When Needed, Tumble Dry Low, Do Not Iron, Do Not Dry Clean.



front



back

**HOW TO MEASURE**



**CHEST WIDTH**

Measure under the arm and around the fullest part of the chest with arms down, keeping tape horizontal.

**SIZE CHART**

|       |       |       |       |       |       |       |       |       |
|-------|-------|-------|-------|-------|-------|-------|-------|-------|
|       | 4XL   | XS    | S     | M     | L     | XL    | 2XL   | 3XL   |
| Chest | 55-57 | 32-34 | 35-37 | 38-40 | 41-43 | 44-46 | 48-50 | 52-54 |

**COLOR INFORMATION**



Black  
PMS NTR BLACK  
C



Charcoal Grey  
Heather  
PMS 7540C