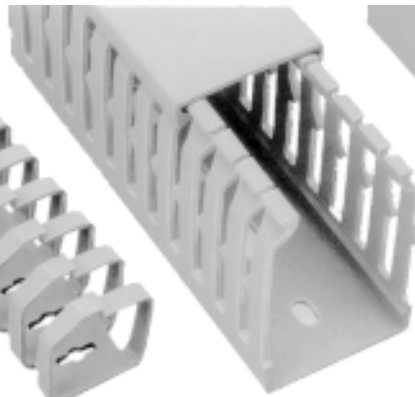
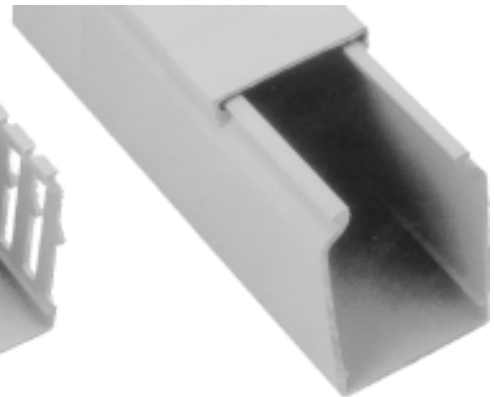




Zig zag



Slotted Walls



Plain Walls

CSII's wiring duct provides a quick, straight forward solution to problems associated with the distribution and layout of cabling. It is suitable for wall mounting as well as for chassis and panels, both vertical and horizontal. The ducting is scored at the base with pre-cut lines along its length to facilitate the cutting of sections of the wall over its entire length, simplifying the connection to other branches for the formation of Tee's or L's, etc. There are also pre-cut lines arranged above the base of the duct body to ease the removal of the breakaway fingers for cable outlets.

MAIN PRODUCT FEATURES

Material:

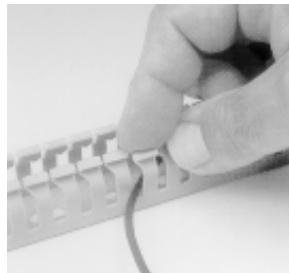
- Raw Material: Rigid M1 PVC, non-inflammable and self-extinguishing according to Standard Norm UNE 53315 U.L. 94 grade V.O.
- High dielectric strength and heat resistance.
- Proof testing VICAT 83° C.
- Working temperature: -40° to +60° C.

Color:

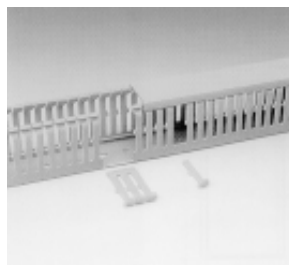
- Grey RAL7030 or White

Supplied As:

- Standard length: 2 meters (6.56 feet)
- Standard: Duct body, with cover included.
- Colors and lengths other than standard on special order only.



The restricted slot sidewall design allows quick and easy positioning of wires. The flexibility of the sidewall's fingers permit easy insertion or removal of wires. The restricted opening at the top and mid-points maintain wire exit positions easily.

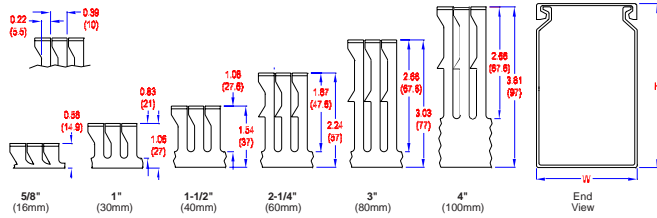


The slotted sidewall design is scored at the base of each finger and at the base/finger corner. This facilitates breaking fingers away from the base for larger bundles of wire or for joining pieces of ducts. Sections are removed quickly and burr free.



Covers are designed to overlap the top edges of the duct, making the cover flush with the sidewall to save space. This unique design prevents slippage of the cover due to vibration.

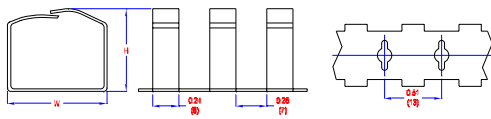
STANDARD WIRE DUCT



Nom Size W" x H"	Catalog Numbers		Actual Size W"(mm) x H"(mm)
	Solid	Slotted	
5/8 x 5/8 1 x 1	16-16L	16-16P	0.63 (16) x 0.63 (16)
	30-25L	30-25P	
1 x 1-1/2	40-25L	40-25P	0.98 (25) x 1.57 (40)
	40-40L	40-40P	
2-1/4 x 1-1/2	40-60L	40-60P	2.36 (60) x 1.57 (40)
1 x 2-1/4	60-25L	60-25P	0.98 (25) x 2.36 (60)
	60-40L	60-40P	
2-1/4 x 2-1/4	60-60L	60-60P	2.36 (60) x 2.36 (60)
3 x 2-1/4	60-80L	60-80P	3.15 (80) x 2.36 (60)
4 x 2-1/4	60-100L	60-100P	3.94 (100) x 2.36 (60)
4-3/4 x 2-1/4	60-120L	60-120P	4.72(120) x 2.36 (60)
1 x 3	80-25L	80-25P	0.98 (25) x 3.15 (80)
	80-40L	80-40P	
2-1/4 x 3	80-60L	80-60P	2.36 (60) x 3.15 (80)
3 x 3	80-80L	80-80P	3.15 (80) x 3.15 (80)
4 x 3	80-100L	80-100P	3.94 (100) x 3.15 (80)
4-3/4 x 3	80-120L	80-120P	4.72(120) x 3.15 (80)
1 x 4	100-25L	100-25P	0.98 (25) x 3.94 (100)
	100-40L	100-40P	
2-1/4 x 4	100-60L	100-60P	2.36 (60) x 3.94 (100)
3 x 4	100-80L	100-80P	3.15 (80) x 3.94 (100)
4 x 4	100-100L	100-100P	3.94 (100) x 3.94 (100)

Replace "P" with "G" for Grey, or "W" for White

Zig Zag Duct



Nom. W" x H"	Catalog Number	W"(mm) x H"(mm)
1-3/16 x 1-1/4	Z-30A	1.18 (30) x 1.30 (33)

Standard Grey with self-adhesive mounting tape

STANDARD ACCESSORIES



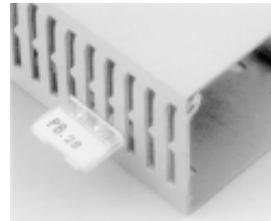
CABLE SLEEVING (TYPE FE)

Expandable cable sleeving for flexible binding of cable bundles.
Material: Fiberglass with polyurethane self-extinguishing ASTM D635/72 and UNE 53315.
Temperature range: -35°C to +175°C.



EXPANDIBLE CABLE MARKERS (TYPE SE)

Cable markers for cable ranging 0.08" (2 mm) to 0.710" (18mm) diameter.
Material: Flexible plasticized PVC.
Temperature range: -50°C to 80°C
Color: Yellow stamped in black.
Standard markings:
Numbers from 0 to 9, Letters A to Z, or Symbols + - / ^.



LABELING TABS (TYPE PR-28)

The labeling tabs are designed for the easy identification of the equipment on panels or control boards. Suitable for attaching to the type P slotted ducting.
Material: Transparent Polycarbonate.
A white card label is included.



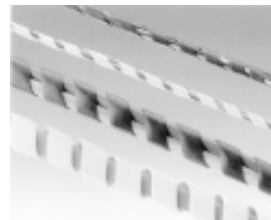
SHARP EDGE PROTECTOR (TYPE PEC)

Insulating protector for cords and edges of panels.
Material: Polyethylene natural color.
Temperature range: -60°C to +80°C.



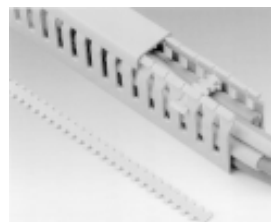
SIGN PLATE (TYPE PS-517) AND INDELIBLE BLACK FELT-TIPPED PEN (TYPE ROTI)

Sign plate for marking large cable bundles. Permanent marking pen available for identifications.
Material: Polyamide 6.6 natural color.
Temperature range: -40°C to +110°C



SPIRAL BINDING, WHITE (TYPE CS) OR BLACK (TYPE CSN)

The helicoidal binding is designed for the rapid wrapping of cable bundles yet allows for cable breakouts in any spot of the installation. Suitable for a flexible connection between the panel and a hinged door.



WIRE RETAINERS (TYPE TSC)

Suitable for the securing of cables in the interior of the Type P slotted ducting. Length: Modular 145 x 45mm (68.5" x 1.75")
Material: Self-extinguishing polypropylene, grey or white.

Stocking Distributor:



CONTROL SWITCHES INTERNATIONAL INCORPORATED



2405 Mira Mar Ave, Long Beach, CA 90815
(562) 498-7331 FAX (562) 498-5894 (800) 521-1677