



## General Data

Type Reference:	PTS(L)(OO)(III)(OI)(OIT)(OOI)(OOIT)(OOO)(OII)(OIIT)(III)(IIIT)(_AU)(_R0)
Description:	Contact Block for base-plate mounting, with positive opening contact
Approvals:	CE, TÜV_Süd
Nature of contact:	2NC / 1NC+1NO / 2NO / 2NC+1NO / 1NC+2NO / 3NO / 3NC
Operation travel:	2.3 mm
Connection type:	PCB-mount terminals
Contact material:	AgNi / AgNi, gold-plated 5µm
Max. storage temperature:	-40°C ... 80°C
Max. operating temperature:	-25°C ... 70°C
Mechanical life:	1 m switching cycles
Electrical life (rated load):	1 m operations
Contact resistance NO:	< 20 mOhm/< 50 mOhm (Au)
Contact resistance NC:	< 20 mOhm/< 50 mOhm (Au)
Min. current:	1 mA (under laboratory conditions)
Min. voltage:	5 V
Bouncing time NO:	< 10ms
Bouncing time NC:	< 10ms
Positive opening contact:	acc. to EN60947-5-1, appendix. K

## Electrical data acc. to IEC/EN 60947-5-1 (VDE 0660 Sect. 200)

	alternate current	direct current
Utilisation category:	AC15 B300	DC13 Q300
Rated insulation voltage Ui:	250 V	250V
Rated operating voltage Ue:	240V / 120V	250V / 125V / 60V / 24V
Rated operating current Ie:	1.5A / 3A	0.27 A / 0.55 A / 1 A / 2 A
Breaking capacity:	10Ie	1,1Ie
Continuous thermal current:	5A	

## Electrical data acc. to IEC/EN 61058-1 (VDE 0630 Sect. 1)

Rated voltage Ue:	250 V~
Rated current Ie:	6(4) A

## Technical Data - Lamp

Lamp socket:	none, with integrated LED
Max. lamp voltage:	30 V AC/DC (*1)
Definition:	X1...anode, X2...cathode

## Electrical Features

Switching voltage:	20mV ... 42V AC/DC
Switching current:	1mA ... 250mA

## Note

R0=LED without series resistor

Contact elements for pushbutton actuator (OIT)(OOIT)(OIIT)(IIIT) with bridged plunger ("T")

The contact unit is snapped into the actuator neck.  
Spacer sleeves ensure the correct distance between PCB and mounting plate.

DC13 life-time: 100,000 at max. load, 10 operations/min

Illuminated versions (LED):	Overvoltage category II (2.5kV), pollution degree 2
Versions with third contact:	Overvoltage category II (2.5kV), pollution degree 2

(\*1) does not apply to the types "...\_R0"

**General Data**

Type Reference:	PCTS(L)_R0
Description:	Contact Block for base-plate mounting
Approvals:	CE
Nature of contact:	1 inverter
Operation travel:	2.3 mm
Connection type:	PCB-mount terminals
Contact material:	gold-plated 1.5µm
Max. storage temperature:	-40°C ... 80°C
Max. operating temperature:	-25°C ... 70°C
Mechanical life:	1 m switching cycles
Electrical life (rated load):	1m operations at rated load
Contact resistance NO:	< 50 mOhm (new state)
Contact resistance NC:	< 100 mOhm (new state)
Bouncing time NO:	< 10ms
Bouncing time NC:	< 10ms

**Technical Data - Lamp**

Lamp socket:	none, with integrated 3 mm LED
Max. lamp voltage:	30 V AC/DC (*1)
Definition:	X1...anode, X2...cathode

**Electrical Features**

Rated voltage:	20mV ... 48V AC/DC
Rated current:	0.01mA ... 100mA

**Note**

RO= LED without series resistor

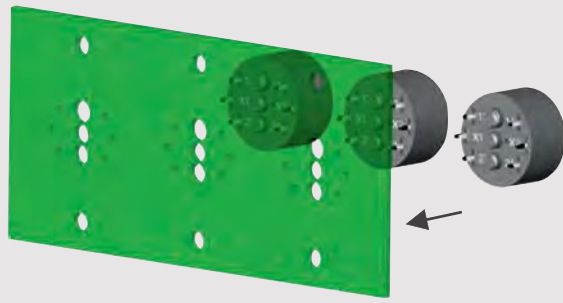
The contact unit is snapped into the actuator neck.  
Spacer sleeves ensure the correct distance between PCB and mounting plate.

(\*1) does not apply to the types "...\_R0"

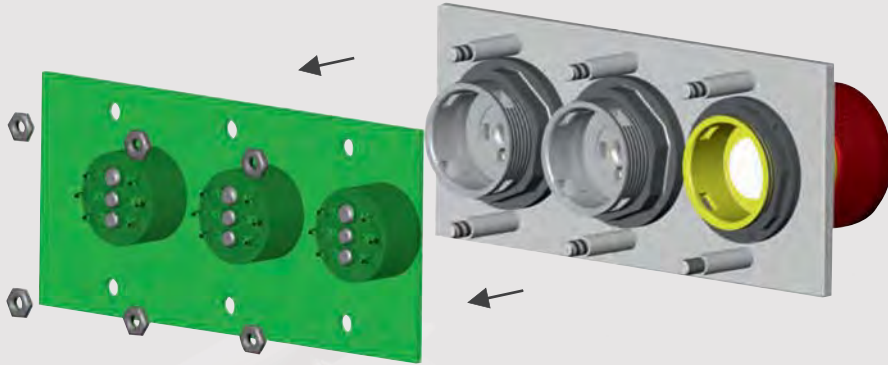


## Mounting Instructions

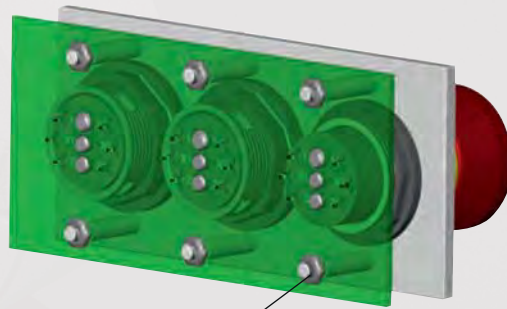
1.



2.



3.



secured captive nuts

# Contact Blocks

PCB-mount terminals

made in germany



About Us

Control Units

Panel Mount Jacks

Bus Technology

Enclosures

Terminal Blocks

Pedal Switches

Limit Switches

Type Index

Illustration	Description	Type
<p>2.3mm 11/12</p> <p>0 1 2</p>	<p><b>Contact Unit, momentary 1NC</b> PCB-mount terminals</p> <p>suitable actuators</p> <p>contact material AgNi contact material AgNi, gold-plated</p>	<p><b>INC</b> <b>PTSO</b> <b>PTSO_AU</b></p>
<p>2.3mm 11/12</p> <p>0 1 2</p>	<p><b>Illuminated Contact Unit, momentary 1NC</b> PCB-mount terminals incl. white LED</p> <p>suitable actuators</p> <p>contact material AgNi contact material AgNi, gold-plated</p>	<p><b>PTSLO</b> <b>PTSLO_AU</b></p>
<p>2.3mm 13/14</p> <p>0 1 2</p>	<p><b>Contact Unit, momentary 1NO</b> PCB-mount terminals</p> <p>suitable actuators</p> <p>contact material AgNi contact material AgNi, gold-plated</p>	<p><b>1NO</b> <b>PTSI</b> <b>PTSI_AU</b></p>
<p>2.3mm 13/14</p> <p>0 1 2</p>	<p><b>Illuminated Contact Unit, momentary 1NO</b> PCB-mount terminals incl. white LED</p> <p>suitable actuators</p> <p>contact material AgNi contact material AgNi, gold-plated</p>	<p><b>1NO</b> <b>PTSLI</b> <b>PTSLI_AU</b></p>
<p>2.3mm 11/12 21/22</p> <p>0 1 2</p>	<p><b>Contact Unit, momentary 2NC</b> PCB-mount terminals</p> <p>suitable actuators</p> <p>contact material AgNi contact material AgNi, gold-plated</p>	<p><b>2NC</b> <b>PTSOO</b> <b>PTSOO_AU</b></p>
<p>2.3mm 11/12 21/22</p> <p>0 1 2</p>	<p><b>Illuminated Contact Unit, momentary 2NC</b> PCB-mount terminals incl. white LED</p> <p>suitable actuators</p> <p>contact material AgNi contact material AgNi, gold-plated</p>	<p><b>2NC</b> <b>PTSLOO</b> <b>PTSLOO_AU</b></p>
<p>2.3mm 11/12 23/24</p> <p>0 1 2</p>	<p><b>Contact Unit, momentary 1NC + 1NO</b> PCB-mount terminals</p> <p>suitable actuators</p> <p>contact material AgNi contact material AgNi, gold-plated</p>	<p><b>1NC + 1NO</b> <b>PTSOI</b> <b>PTSOI_AU</b></p>
<p>2.3mm 11/12 23/24</p> <p>0 1 2</p>	<p><b>Illuminated Contact Unit, momentary 1NC + 1NO</b> PCB-mount terminals incl. white LED</p> <p>suitable actuators</p> <p>contact material AgNi contact material AgNi, gold-plated</p>	<p><b>1NC + 1NO</b> <b>PTSLOI</b> <b>PTSLOI_AU</b></p>

Illustration	Description	Type
 <p>2,3mm</p> <p>0 1 2</p> <p>11/12 </p> <p>23/24 </p> <p></p> <p></p>	<p><b>Contact Unit, momentary 1NC + 1NO</b> PCB-mount terminals only suitable for pushbutton heads</p> <p>suitable actuators </p> <p>contact material AgNi</p> <p>contact material AgNi, gold-plated</p>	<p><b>PTSOIT</b> <b>PTSOIT_AU</b></p>
 <p>2,3mm</p> <p></p> <p>0 1 2</p> <p>11/12 </p> <p>23/24 </p> <p></p> <p></p> <p></p>	<p><b>Illuminated Contact Unit, momentary 1NC + 1NO</b> PCB-mount terminals incl. white LED only suitable for pushbutton heads</p> <p>suitable actuators </p> <p>contact material AgNi</p> <p>contact material AgNi, gold-plated</p>	<p><b>PTSLOIT</b> <b>PTSLOIT_AU</b></p>
 <p>2,3mm</p> <p>0 1 2</p> <p>13/14 </p> <p>23/24 </p> <p></p> <p></p>	<p><b>Contact Unit, momentary 2NO</b> PCB-mount terminals</p> <p>suitable actuators </p> <p>contact material AgNi</p> <p>contact material AgNi, gold-plated</p>	<p><b>PTSII</b> <b>PTSII_AU</b></p>
 <p>2,3mm</p> <p></p> <p>0 1 2</p> <p>13/14 </p> <p>23/24 </p> <p></p> <p></p> <p></p>	<p><b>Illuminated Contact Unit, momentary 2NO</b> PCB-mount terminals</p> <p>suitable actuators </p> <p>contact material AgNi</p> <p>contact material AgNi, gold-plated</p>	<p><b>PTSLII</b> <b>PTSLII_AU</b></p>
 <p>2,3mm</p> <p>0 1 2</p> <p>11/12 </p> <p>33/34 </p> <p>21/22 </p> <p></p> <p></p> <p></p>	<p><b>Contact Unit, momentary 2NC + 1NO</b> PCB-mount terminals</p> <p>suitable actuators </p> <p>contact material AgNi</p> <p>contact material AgNi, gold-plated</p>	<p><b>PTSOOI</b> <b>PTSOOI_AU</b></p>
 <p>2,3mm</p> <p></p> <p></p>	<p><b>Lampholder incl. LED</b> PCB-mount terminals</p> <p>suitable actuators </p>	<p><b>PTSL</b></p>
 <p>1,8mm</p> <p></p> <p></p> <p></p>	<p><b>Tactile Contact Unit, momentary</b> not suitable for emergency stops</p> <p>suitable actuators </p>	<p><b>PCTS</b></p>
 <p>1,8mm</p> <p></p> <p></p> <p></p> <p></p> <p></p>	<p><b>Illuminated Tactile Contact Unit, momentary</b> not suitable for emergency stops</p> <p>suitable actuators </p>	<p><b>PTCSL</b></p>

About Us

Control Units  
Contact Blocks

Panel Mount Jacks

Bus Technology

Enclosures

Terminal Blocks

Pedal Switches

Limit Switches

Type Index