



# West Bolo Lower Plate Gold Exploration & Development Projects

JV Partner: Pershing Resources  
Carlin Style & Structural Gold



America's Gold Exploration

Pershing Resources

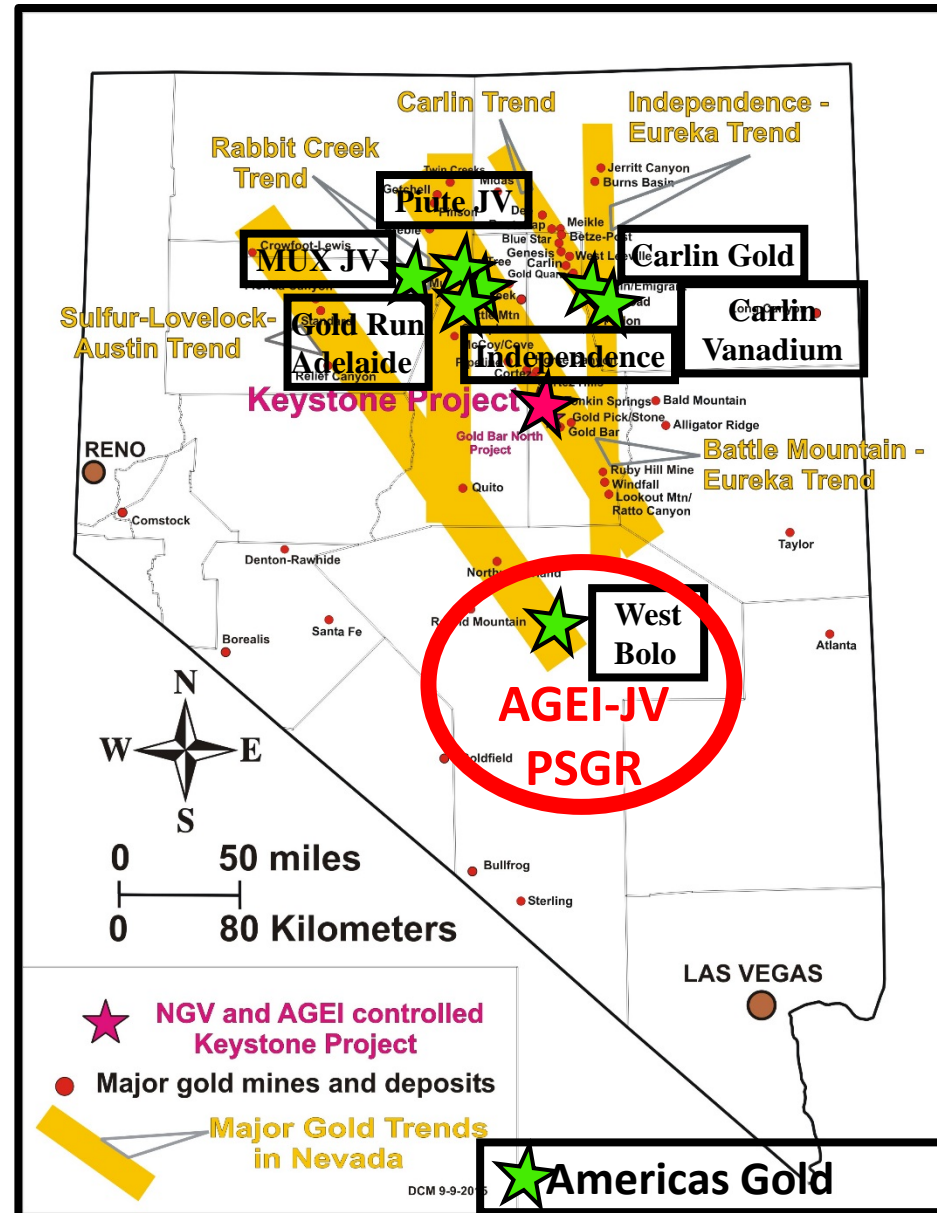
Exploration & Development

McDowell  
FL Claims  
August 2017  
FL\_LMs  
FL\_Claims





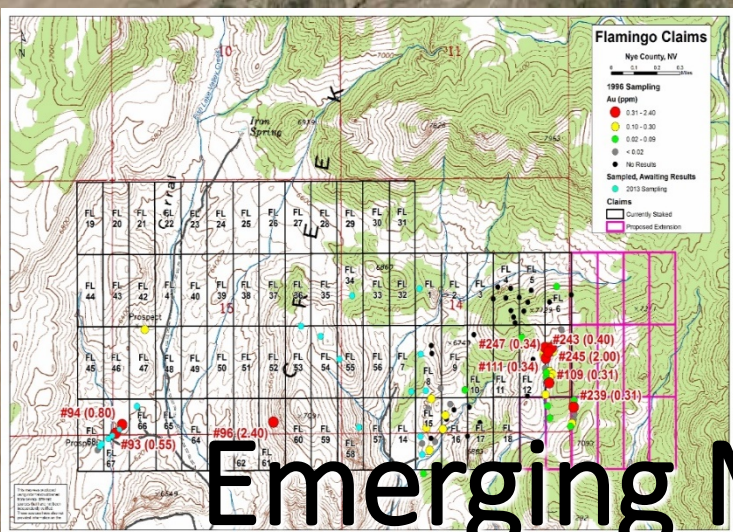
- **“Nevada Elephant Country”** - numerous >20M oz gold deposits within the Nevada gold trends; discovery continues
- Nevada hosts some of the world’s most prolific gold mining belts and remains the cornerstone to Barrick and Newmont’s gold production
- **Approx. 6M oz of gold produced annually** – over 75% of U.S. gold production
- Nevada is a geopolitically stable, pro-mining jurisdiction with substantial infrastructure
- Modern-day exploration techniques and deposit models have not been applied to the Keystone district





# PSGR JV: West Bolo Lower Plate

## Gold Exploration & Development Projects



**AGEI  
PSGR**

**"Bolo"  
Resource  
Columbus  
Gold**

**New Claims  
Columbus  
Gold**

**Coeur  
Renaissance  
Gold New  
Claims**

**Newmont  
Claims**

# Emerging Major Gold District



# Emerging Major Gold District

**"Bolo" Resource  
Allegiant Gold**

**AGEI – PSGR JV  
West Bolo Project**



America's Gold Exploration

Pershing Resources



Exploration & Development

© 2017 Google

Google Earth

Google Earth

miles 2  
km 3





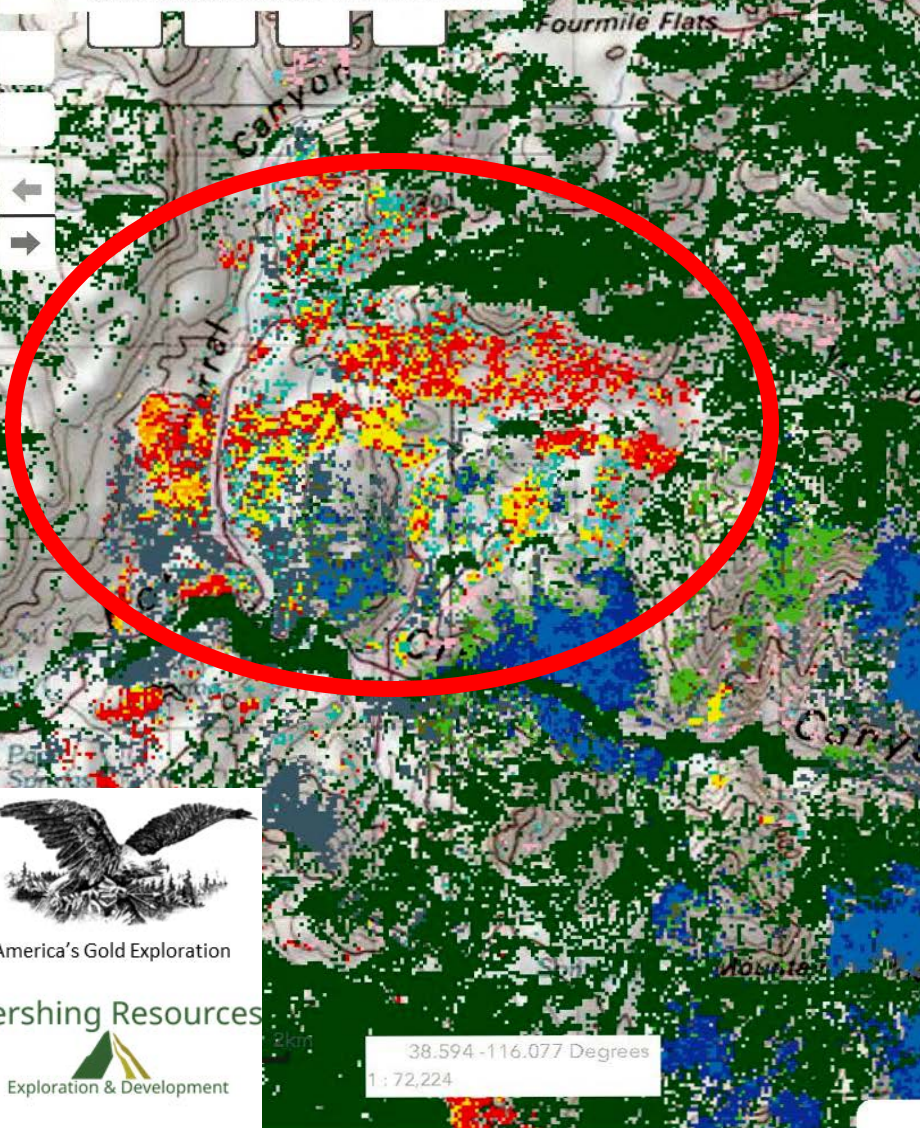


# National Map of Surficial Mineralogy

Ro

+ Hot Creek Range, Nevada, USA X Q

Show search results for Hot Creek Ra...



America's Gold Exploration

Pershing Resources



Exploration & Development

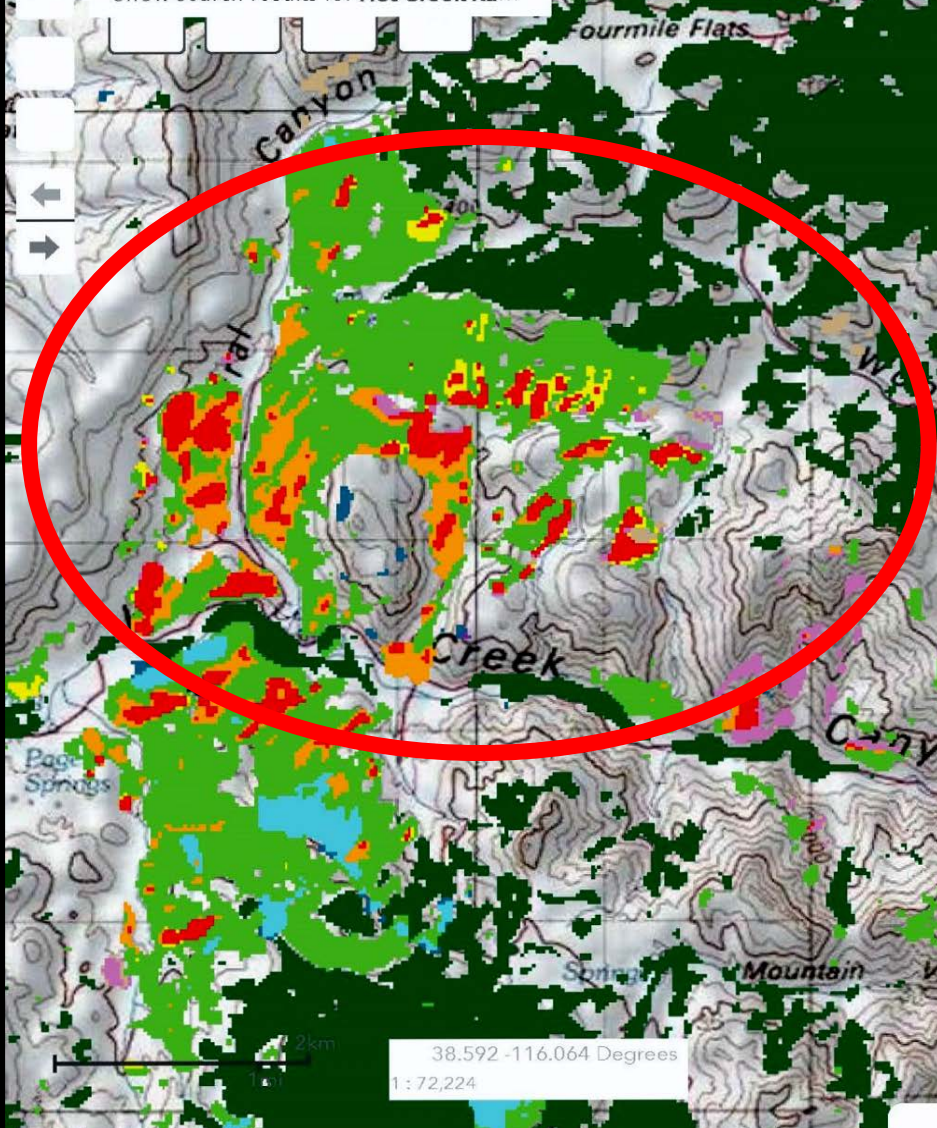


# National Map of Surficial Mineralogy

R

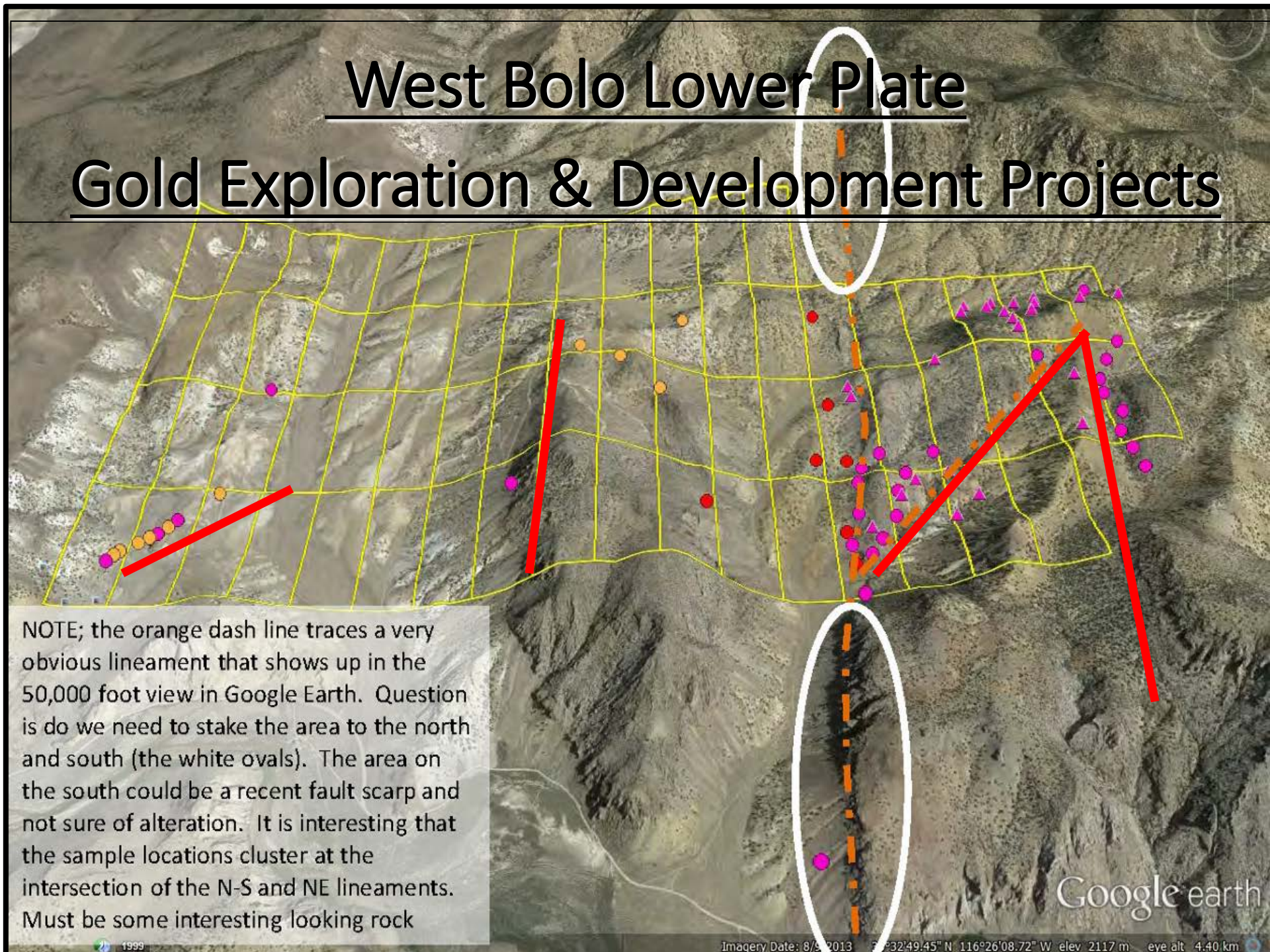
+ Hot Creek Range, Nevada, USA X Q

Show search results for Hot Creek Ra...





# West Bolo Lower Plate Gold Exploration & Development Projects



NOTE; the orange dash line traces a very obvious lineament that shows up in the 50,000 foot view in Google Earth. Question is do we need to stake the area to the north and south (the white ovals). The area on the south could be a recent fault scarp and not sure of alteration. It is interesting that the sample locations cluster at the intersection of the N-S and NE lineaments. Must be some interesting looking rock

Google earth





# West Bolo Gold-Lower Plate

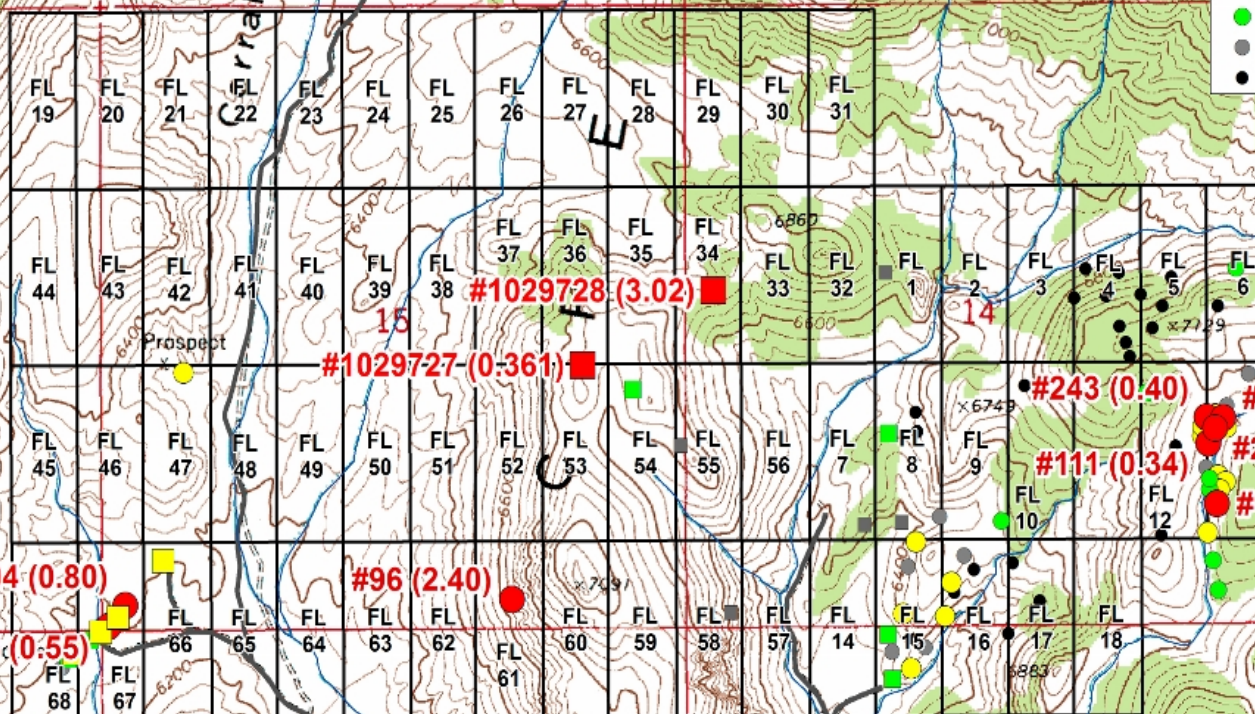
## Flamingo Claims

Nye County, NV

0 0.1 0.2 0.3 Miles

### 1996 Sampling 2013 Sampling

Au (ppm)	Au (ppm)
0.31 - 2.40	0.31 - 2.40
0.10 - 0.30	0.10 - 0.30
0.02 - 0.09	0.02 - 0.09
< 0.02	< 0.02
No Results	



## Carlin Style & Structural Gold



America's Gold Exploration

Pershing Resources

Exploration &amp; Development





# West Bolo Lower Plate Gold Project

	Au-AA23	CP41	IE-ICP41	IE-ICP41	CP41
SAMPLE	Au	Ag	As	Sb	Hg
DESCRIPTION	ppm	ppm	ppm	ppm	ppm
RWB#1	0.374	3	>10000	242	2
RWB#2	1.555	2	1940	377	1
RWB#3	0.332	2	1465	102	2
RWB#4	1.170	1	434	11	<1
RWB#5	0.080	0	7410	252	<1
RWB#6	0.007	1	54	16	<1
RWB#7	0.010	1	88	40	<1
RWB#8	0.080	9	5970	>10000	54
RWB#9	0.172	6	641	6540	2
RWB#10	0.014	108	36	263	<1
RWB#11	0.112	4	115	165	1
RWB#12	0.013	0	46	52	<1
RWB#13	0.093	5	487	245	3
RWB#14	0.126	1	854	120	1
RWB#15	0.047	1	138	36	<1
RWB#16	0.101	1	536	28	1
RWB#17	0.134	2	171	775	<1
RWB#18	0.075	2	91	13	<1
RWB#19	0.100	1	391	368	1
RWB#20-JS	<0.005	0	54	89	7
RWB#21	0.089	8	221	>10000	23
RWB#22	<0.005	<0.2	70	863	<1
RWB#23	0.009	<0.2	152	151	<1
RWB#24	<0.005	<0.2	207	2490	<1

Sampler	Year	Sample No.	Au ppm	Ag ppm	As ppm	Sb ppm	Hg ppm
M. Abrams	2013	1029728	3.020	2	932	71	-9999.0
L. Campbell	1972	96	2.400	4	NA	NA	NA
L. Campbell	1974	245	2.000	13	600	390	2.2
L. Campbell	1974	119	1.900	15	NA	NA	NA
L. Campbell	1970	94	0.800	17	NA	NA	NA
L. Campbell	1969	93	0.550	27	NA	NA	NA
L. Campbell	1974	243	0.400	1	140	180	0.3
M. Abrams	2013	1029727	0.361	6	1930	432	NA
L. Campbell	1974	111	0.340	0	400	230	0.2
L. Campbell	1974	247	0.340	8	400	230	0.6
L. Campbell	1974	109	0.310	3	250	95	4.2
L. Campbell	1974	239	0.310	0	160	190	0.2
M. Abrams	2013	1029720	0.231	0	262	6560	NA
L. Campbell	1974	99	0.230	6	250	120	0.3
L. Campbell	1974	250	0.230	3	250	120	0.3
L. Campbell	1974	103	0.220	2	100	65	0.3
L. Campbell	1974	105	0.190	1	140	85	0.2
M. Abrams	2013	1029722	0.189	8	443	6450	NA
M. Abrams	2013	1029724	0.168	3	3110	3920	NA
M. Abrams	2013	1029723	0.163	7	493	6870	NA
L. Campbell	1974	251	0.150	4	200	105	0.3
L. Campbell	1974	241	0.140	1	50	185	0.3
L. Campbell	1974	242	0.140	2	140	55	0.3
L. Campbell	1974	246	0.140	2	100	65	0.2
L. Campbell	1974	108	0.130	1	100	24	0.1
L. Campbell	1974	120	0.130	120	NA	NA	NA
L. Campbell	1974	236	0.130	0	140	50	0.1
L. Campbell	1971	95	0.110	2	NA	NA	NA
L. Campbell	1974	244	0.110	0	80	55	0.2
L. Campbell	1974	252	0.110	1	60	17	0.1
L. Campbell	1973	97	0.100	4	250	125	0.2
L. Campbell	1974	253	0.100	1	60	20	0.1







# *West Bolo Lower Plate AGEI-PSGR Project Area*



**Partial Gold Sample Locations Only**  
**Note Extensive Alteration & Structural Controls**

Google Earth

miles 1  
km 1











# Silver Assays

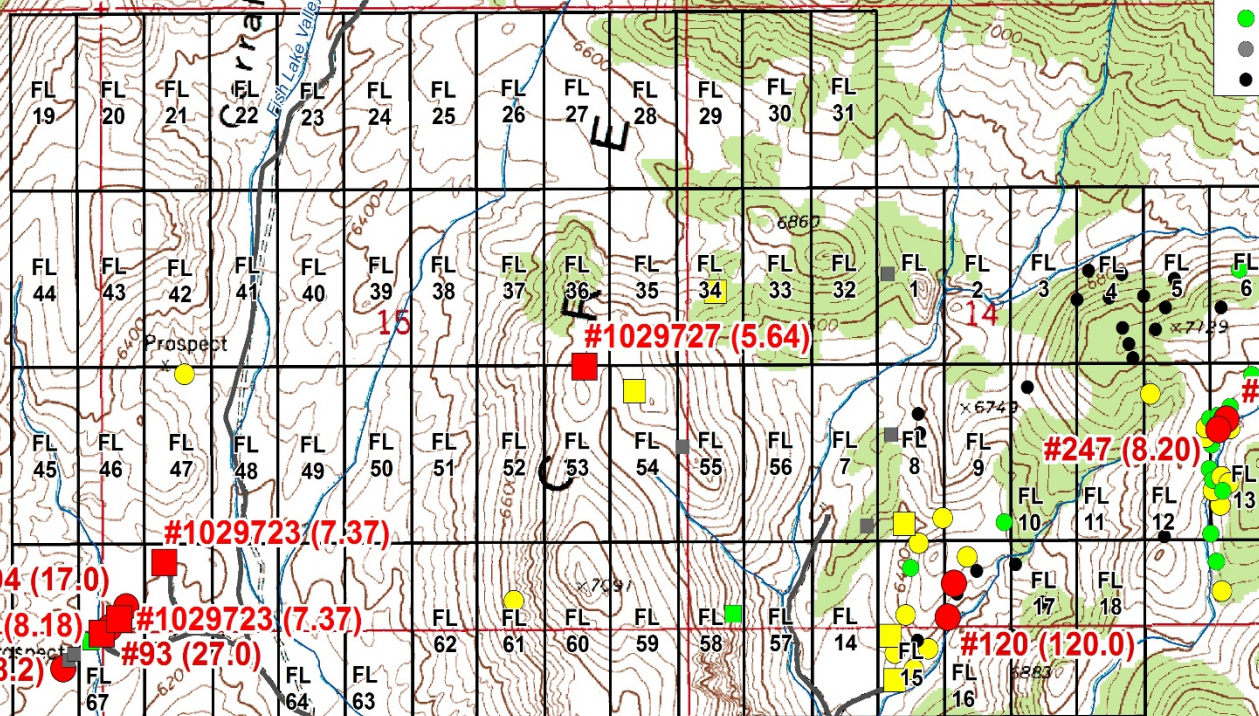
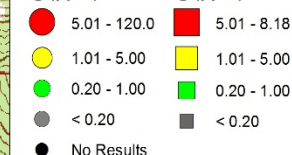
## Flamingo Claims

Nye County, NV

0 0.1 0.2 0.3 Miles

1996 Sampling 2013 Sampling

Ag (ppm) Ag (ppm)











This map was produced using information obtained from several different sources that have not been independently verified. These sources have also not provided information on the

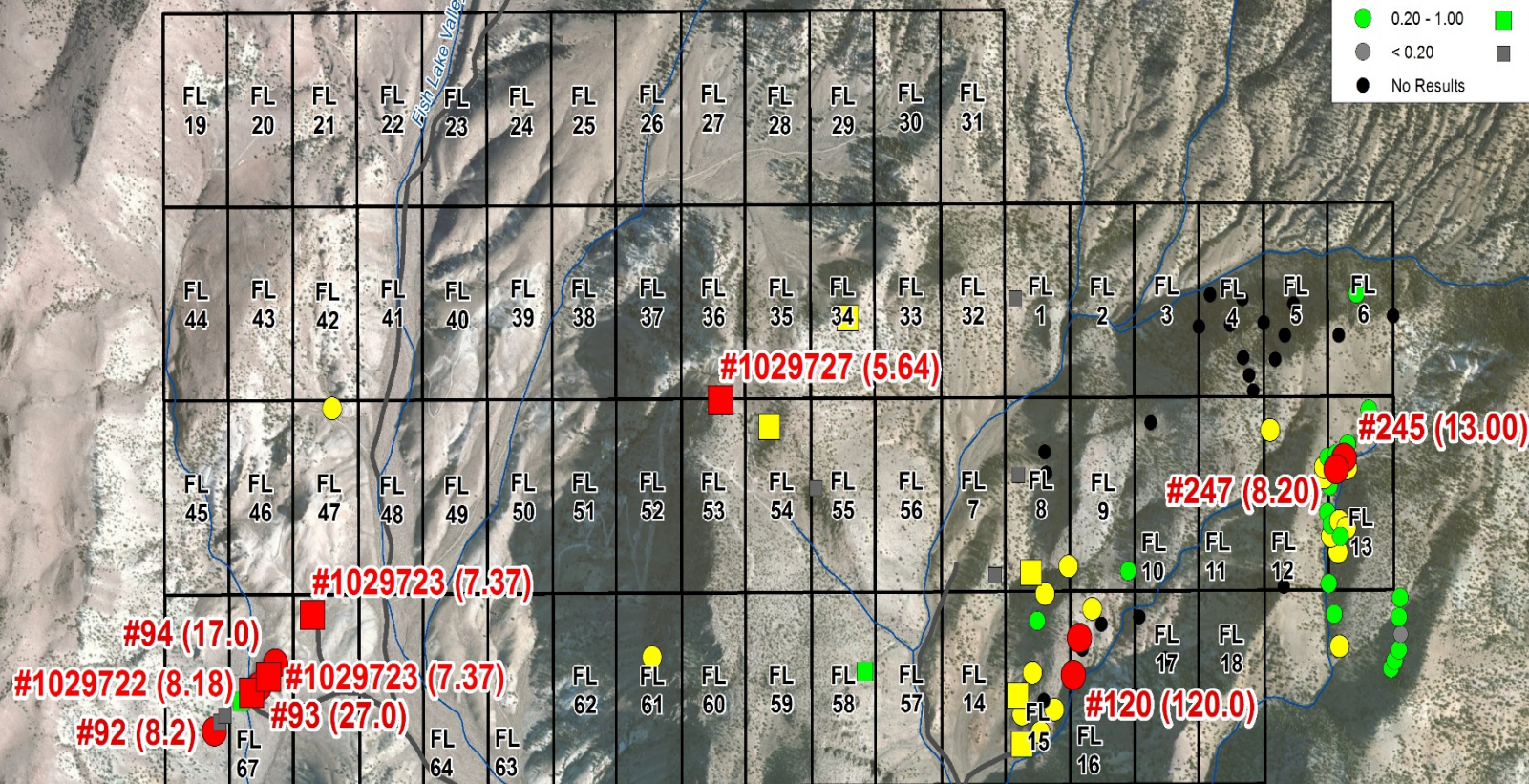
# Emerging Major Gold District



**Nye County, NV**

0 0.1 0.2 0.3 Miles

Ag (ppm)	Ag (ppm)
 5.01 - 120.0	 5.01 - 8.18
 1.01 - 5.00	 1.01 - 5.00
 0.20 - 1.00	 0.20 - 1.00
 < 0.20	 < 0.20
 No Results	



This map was produced using information obtained from several different sources that have not been independently verified. These sources have also not provided information on the

Source: Esri, DigitalGlobe, GeoEye, Icube, USDA, USGS, AeroGRID, IGN, IGP, and the GIS User Community



# Emerging Major Gold District

**AGEI – PSGR JV  
West Bolo Project**

**“Bolo” Gold  
Resource  
Allegiant**

© 2017 Google

Google Earth

Google Earth

miles  
km

1

3







## Flamingo Claims

Nye County, NV



### 1996 Sampling

Au (ppm)

● 0.31 - 2.40

● 0.10 - 0.30

● 0.02 - 0.09

● < 0.02

● No Results

### Sampled, Awaiting Results

● 2013 Sampling

### Claims

□ Currently Staked

□ Proposed Extension

# Major Untested Gold Zone



© 2017 Google



