

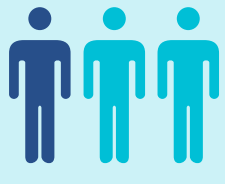
A Closer Look at LUPUS NEPHRITIS

What Is It?

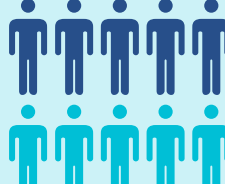
A rare disease involving inflammation of the kidneys caused by Systemic Lupus Erythematosus (SLE). In **lupus nephritis**, the kidneys cannot function properly to remove waste from the blood and control the amount of fluids in the body.

Who Develops It?

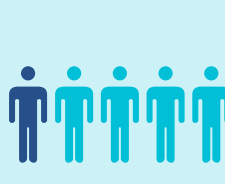
In adults with SLE...



About **ONE-THIRD** have lupus nephritis at **DIAGNOSIS**^{1,2}



Up to **5 OUT OF 10** develop lupus nephritis **OVER TIME**³



Approximately **1 IN 5** with lupus nephritis are thought to be **UNDIAGNOSED**⁴

There is a **HIGHER PREVALENCE** of lupus nephritis among specific **RACIAL/ETHNIC groups**^{5,6}

Compared to Caucasians, the prevalence of lupus nephritis is roughly⁶:

4X HIGHER for African Americans and Asians

2X HIGHER for Hispanics and Native Americans

Signs and Symptoms

Common early signs and symptoms:



Fatigue



Weight gain



Foamy or frothy urine



High blood pressure



Swelling, usually in legs, feet, or ankles

Key Feature of Lupus Nephritis:

Higher than normal levels of **PROTEIN IN THE URINE** (a condition known as proteinuria)⁵

Diagnosis



Rheumatologist: Specialist who typically diagnoses lupus and lupus nephritis



Nephrologist: Specialist who usually confirms lupus nephritis diagnosis through kidney biopsy

Always speak to your physician if you have any questions.

Tests used to diagnose lupus nephritis:

Urine Test



Blood Test



Kidney Biopsy



Treatments

To date, no therapies have been approved by the U.S. Food and Drug Administration (FDA) or European Medicines Agency (EMA) for the treatment of lupus nephritis.



Commonly used unapproved treatments may include:

- Corticosteroids
- Immunosuppressive therapy

Aurinia does not promote or support the use of unapproved therapies for treatment of lupus nephritis.

Early Diagnosis and Treatment

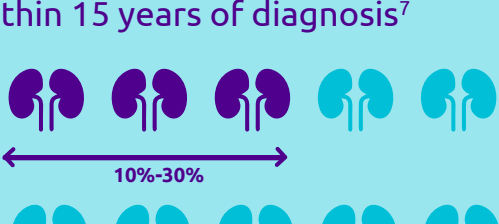
of lupus nephritis may improve long-term results⁵



Impact on Health and Wellbeing

In people with lupus nephritis...

10%-30% develop kidney failure within 15 years of diagnosis⁷



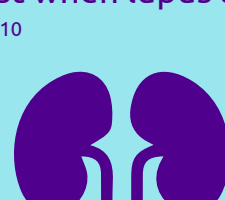
One study found that after 24 weeks of treatment, **9 out of 10** people still showed signs of kidney disease⁸

9 out of 10

Medical expenses are **4X** higher than for people with lupus alone⁹



A Swedish study of 255 people with SLE showed that the **impact on physical and emotional health** is greatest when lupus affects the **KIDNEYS**¹⁰



What's Next?

Clinical Trials: New potential treatments specific to lupus nephritis are currently being investigated

To learn more, visit: www.clinicaltrials.gov (Search "lupus nephritis")

Stay Connected. Stay Informed.

ALL INTM

Connecting the Lupus Nephritis Community

REGISTER NOW AT: www.ALLINforLN.com/register

Sign up to receive news and updates from ALL IN about lupus nephritis.

References

1. Bihl GR, Petri M, Fine DM. Kidney biopsy in lupus nephritis: look before you leap. *Nephrol Dial Transplant*. 2006; 21:1749-1752.
2. What is lupus nephritis? Molly's Fund website. Available at: www.mollysfund.org/lupus-nephritis/. Accessed October 11, 2017.
3. Lupus and Kidney Disease (Lupus Nephritis). National Institute of Diabetes and Digestive and Kidney Diseases website. Available at: <https://www.niddk.nih.gov/health-information/kidney-disease/lupus-nephritis>. Accessed February 7, 2019.
4. Data on File, Aurinia Pharmaceuticals, Inc. 5. Almasani S, Meara A, Rovin BH. Update on lupus nephritis. *Clin J Am Soc Nephrol*. 2016. doi: 10.2215/CJN.057806.16.
6. Feldman CH, et al. Epidemiology and sociodemographics of systemic lupus erythematosus and lupus nephritis among US adults with Medicaid coverage, 2000-2004. *Arthritis Rheum*. 2013;65:753-763.
7. Maroz N, Segal MS. Lupus nephritis and end-stage kidney disease. *Am J Med Sci*. 2013;346:319-323.
8. Appel GB, Contreras G, Dooley MA, et al. Mycophenolate mofetil versus cyclophosphamide for induction treatment of lupus nephritis. *J Am Soc Nephrol*. 2009;20:1103-1112.
9. Carls G, Li T, Panopalis P, et al. Direct and indirect costs to employers of patients with systemic lupus erythematosus with and without nephritis. *J Occup Environ Med*. 2009;51:66-79.
10. Chaigne B, et al. Impact of disease activity on health-related quality of life in systemic lupus erythematosus—a cross-sectional analysis of the Swiss Systemic Lupus Erythematosus Cohort Study (SSCS). *BMC Immunology*. 2017;18. doi:10.1186/s12865-017-0200-5.