

LESSON OF THE WEEK FOR SEPTEMBER 28TH, 2015

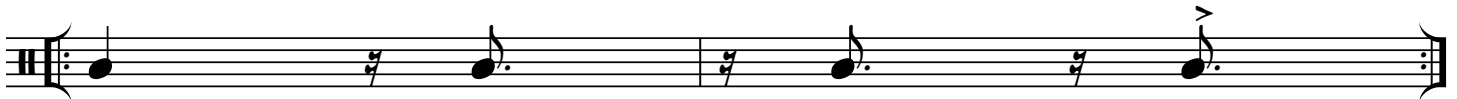
MARACATU

THIS BRAZILIAN RHYTHM IS A DERIVATIVE OF THE SAMBA AND COMES IN MANY VARIETIES. HERE IS ONE ADAPTATION FOR THE DRUM SET...

BEGIN WITH THE STANDARD SAMBA BASS LINE, SPLASH THE FOOT HI-HAT...



SIMULATE THE SURDO DRUM BY PLAYING THIS RHYTHM ON THE FLOOR TOM WITH ONE HAND...



COMBINE THE TWO PARTS...



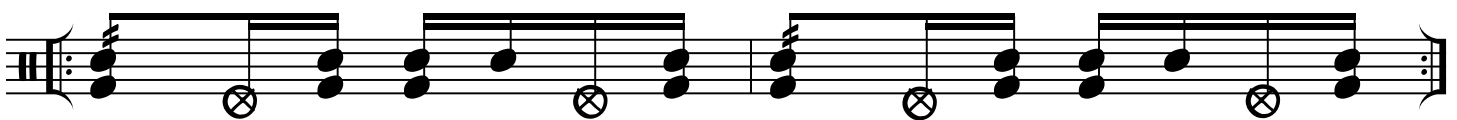
NOW PLAY THE SNARE PART WITH THE OTHER HAND. PRESS ROLL ON THE FIRST NOTE...



COMBINE THE TWO HAND PARTS...



PLAY THE SNARE AND BASS PARTS...



PUT IT ALL TOGETHER WITH THE TWO HANDS AND THE BASS...



THIS PATTERN AND OTHER SAMBAS CAN BE FOUND IN WORLD RHYTHMS. SEE AND HEAR IT ON THE WEBSITE TOO.