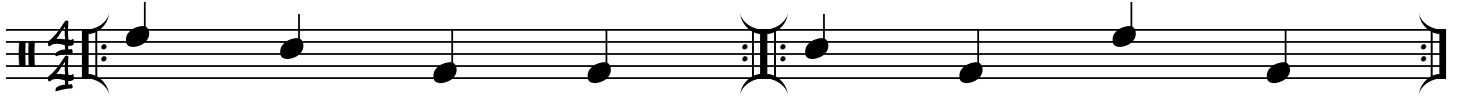


LESSON OF THE WEEK FOR JULY 23RD, 2015

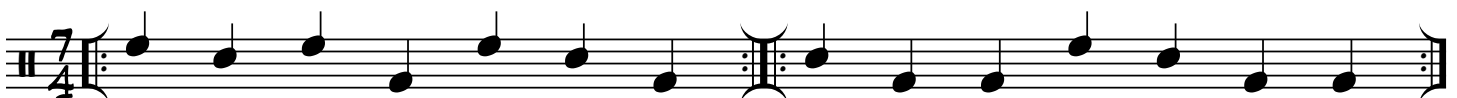
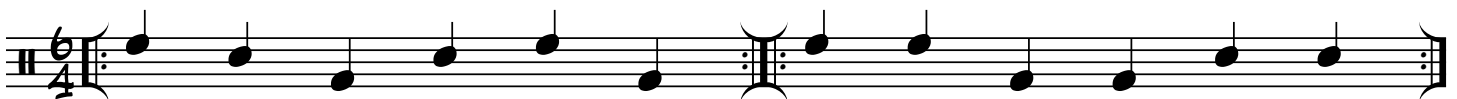
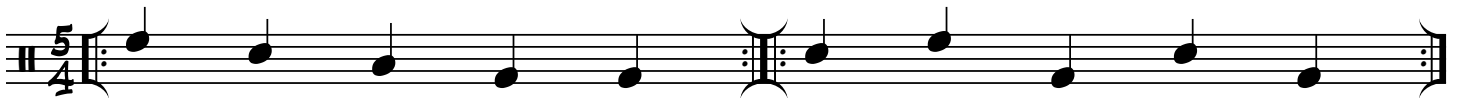
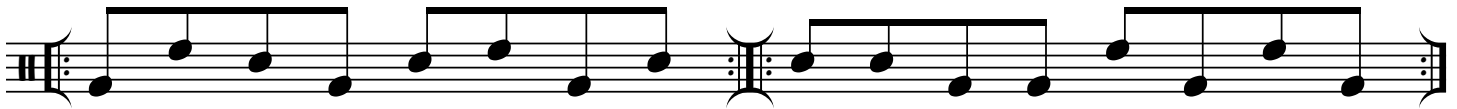
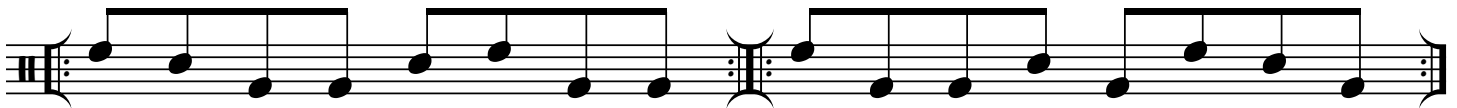
TOM TOM/BASS DRUM COORDINATION

HERE ARE SOME USEFUL COORDINATION PATTERNS THAT ALSO WORK WELL AS FILLS AND SOLO IDEAS...

TOP LINE: RH ON ANY DRUM, SNARE LINE: LH ON ANY DRUM, BASS LINE: FOOT



START SLOW, GRADUALLY INCREASE TO TOP SPEED AND HOLD IT. PLAY EVENLY...



FOR MORE COORDINATION EXERCISES CHECK OUT [READING RHYTHMS...](#)

