

LESSON OF THE WEEK FOR AUGUST 20TH, 2015

DOTTED EIGHTH NOTES

MAKE SURE TO REVIEW DOTTED QUARTER NOTES FIRST. THESE FOLLOW THE SAME FORMULA...

SINCE ONE EIGHTH ($1/8$) EQUALS TWO SIXTEENTHS ($2/16$) THEN HALF OF AN EIGHTH EQUALS ONE SIXTEENTH.



THEREFORE ONE AND A HALF EIGHTHS EQUALS THREE SIXTEENTHS.



A DOTTED EIGHTH NOTE IS JUST ONE AND A HALF SIXTEENTH NOTES...WHICH EQUALS THREE SIXTEENTHS.



AN $1/8$ NOTE GOES FROM 1 TO AND

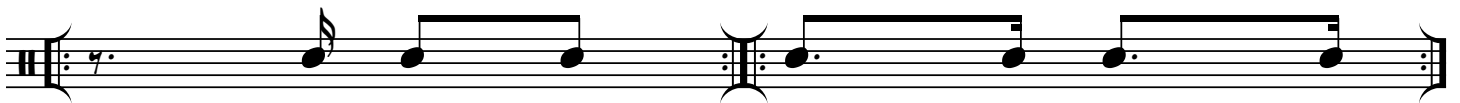
ADD A $1/16$ TH REST TO GO TO THE AH OF ONE

WITH A DOTTED $1/8$ TH THERE IS NO NEED FOR THE $1/16$ TH REST



A $1/4$ REST EQUALS THREE $1/8$ TH RESTS

TWO DOTTED $1/4$ NOTES IN THE SAME BAR



WITH MIXED RHYTHMS

DOTTED $1/4$ ON BEAT 2



AROUND THE SET...



FOR A COMPLETE DISCUSSION ON ALL DOTTED NOTES GRAB A COPY OF READING RHYTHMS...