

Gimme Brains


intro

1C riff 14x

Verse

1C riff: || 3x } 3x
1D 1C ||

pre-chorus

1B  ||

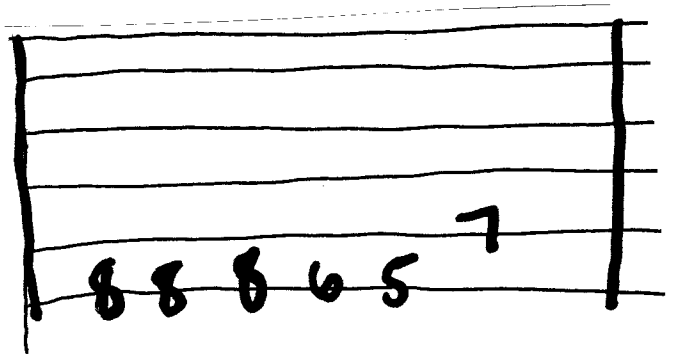
Chorus

1F | B^b: || 3x
1A | B^b ||
1F | B^b: || 3x

post-chorus

1A | B^b: || 3x
1C | C |

"C RIFF"



Verse - pre - chorus - post

End on C