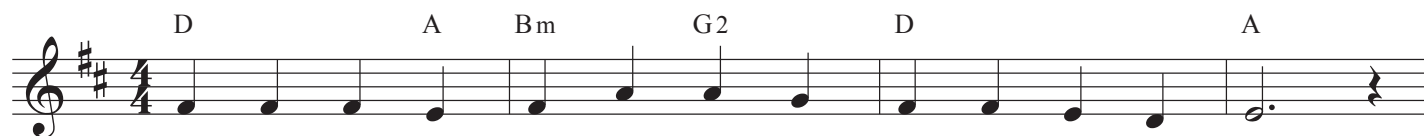


# Are You Weary, Are You Languid

Text: John Mason Neal

Music: STEPHANOS, 1868,

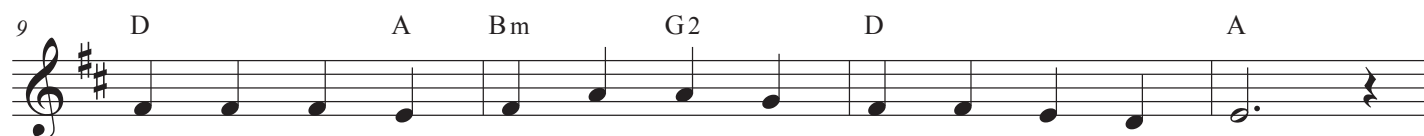
Arr. and added refrain Nathan C. George, 2020



Are you wea - ry, are you lan - guid, are you sore dis - tress'd?  
Is there di - a - dem, as Mon - arch, that his brow a - dorns?  
If I still hold close - ly to him, what has he at last?



"Come to — me," says One, "and, com - ing, be at rest."  
"Yes, a — crown, in ver - y — sure - ty, but of thorns."  
"Sor - row — van - quished, la - bor end - ed, Jor - dan passed."



Has he marks to lead me to him, if he be my Guide?  
If I find him, if I fol - low, what his prom - ise here?  
If I ask him to re - ceive me, will he say me nay?



"In his — feet and hands are — wound - prints, and his side."  
"Man - y a sor - row, man - y a la - bor, many a tear."  
"Not till — earth and not till — heav - en pass a - way."



Find - ing, fol - l'wing, keep - ing, strugg - ling, is he sure to bless?



"Saints, a - pos - tles, proph - ets, — mar - tyrs an - swer yes!"