

Are You Weary, Are You Languid

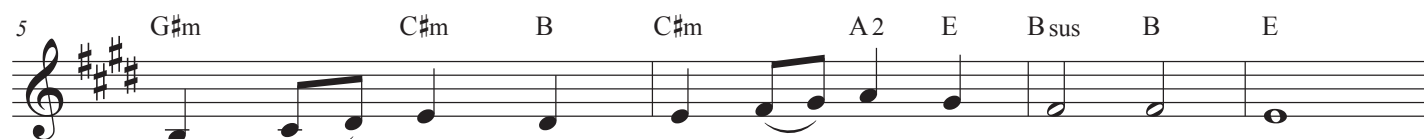
Text: John Mason Neal

Music: STEPHANOS, 1868,

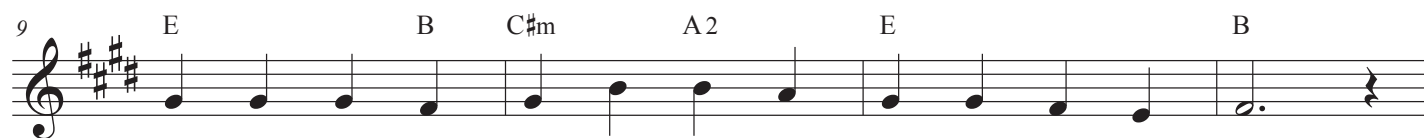
Arr. and added refrain Nathan C. George, 2020



Are you wea - ry, are you lan - guid, are you sore dis - tress'd?
Is there di - a - dem, as Mon - arch, that his brow a - dorns?
If I still hold close - ly to him, what has he at last?



"Come to__ me," says One, "and, com - ing, be at rest."
"Yes, a__ crown, in ver - y__ sure - ty, but of thorns."
"Sor - row__ van - quished, la - bor end - ed, Jor - dan passed."



Has he marks to lead me to him, if he be my Guide?
If I find him, if I fol - low, what his prom - ise here?
If I ask him to re - ceive me, will he say me nay?



"In his__ feet and hands are__ wound-prints, and his side."
"Man - y a sor - row, man - y a la - bor, many a tear."
"Not till__ earth and not till__ heav - en pass a - way."



Find - ing, fol - l'wing, keep - ing, strugg - ling, is he sure to bless?



"Saints, a - pos - tles, proph - ets, __ mar - tyrs an - swer yes!"