

## ACCENT

Alton favorites  
**SABLE**

raise ruckus on radio



By JILL MOON

The Telegraph

ALTON — Country music band Sable took on Nashville and seems to be winning.

The Fast Eddie's Bon-Air regulars played in Nashville, Tenn., all last week and attended the New Country Radio Seminar to hobnob with radio program directors and deejay personalities. Sable's new CD, "Coming Home," recorded in Nashville, will be coming out at the end of this month.

Brothers Jeff, of Shiloh, and Chris Sable, of Granite City, began performing regularly more than 10 years ago but have made music together since before they were teens in Highland, where they grew up.

"Chris taught me how to play guitar. Then, he moved to bass," Jeff said.

The band has played various styles of music, but for the past several years, country has been Sable's genre of choice.

"If you call us anything, I would call us a John Cougar-style country, a little more rock-based, more new country," Jeff said.



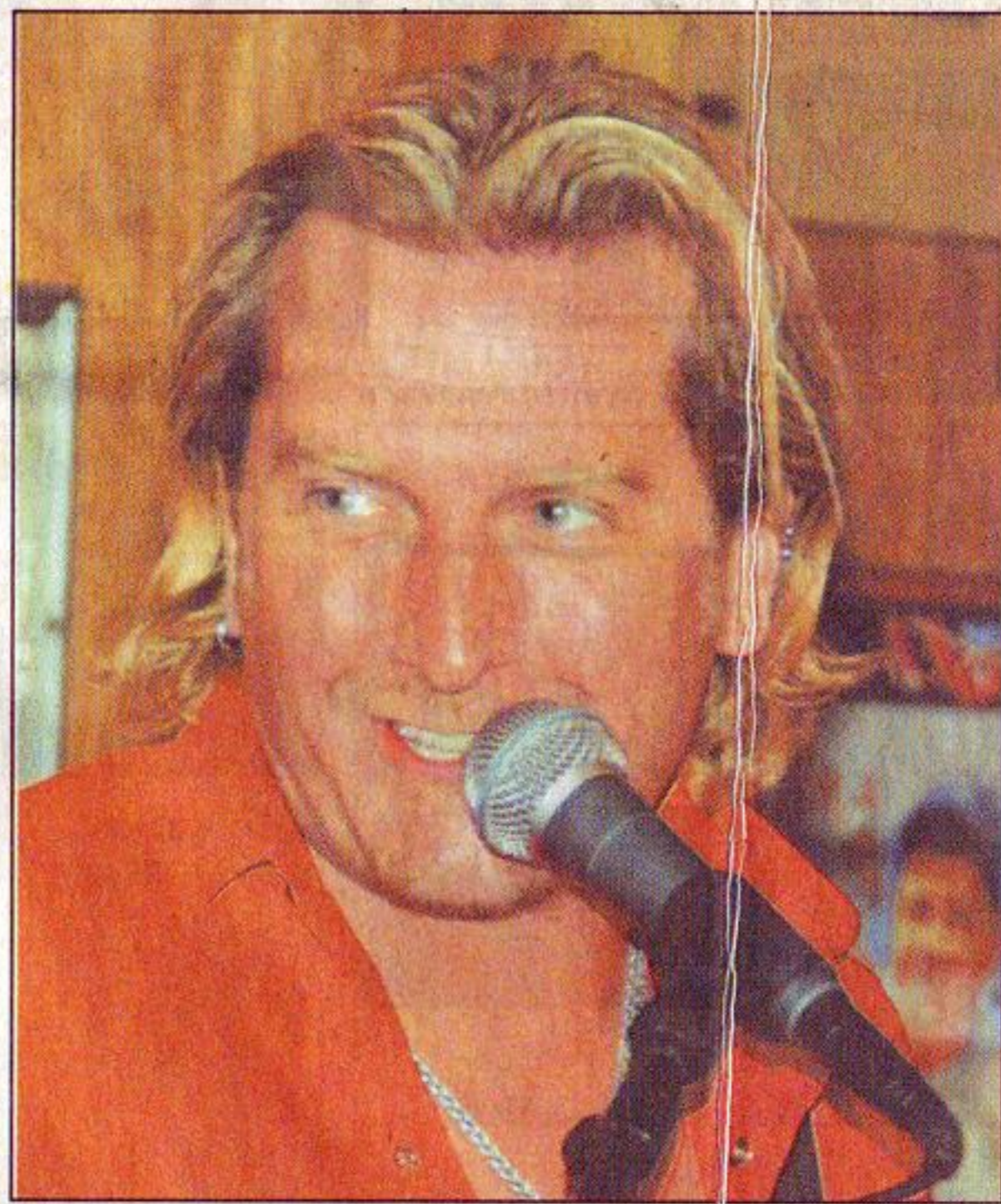
For The Telegraph/DAN CRUZ

Brothers Chris Sable, above, and Jeff Sable, right, play in country music band Sable. The two have been performing for more than 10 years. See video at [thetelegraph.com](http://thetelegraph.com)

After playing for local fans for so long, the Sables started hiring promoters. The effort paid off. "Drop of Rain," the third single from the new CD, is on the country charts and climbing. Sable's first single,

"Raised on the Radio," sums up the brothers best, they said.

The Sables' songwriting style is very personal and revealing. Love, life and family make up

See **SABLE**, Page B4

## CHURCH BRIEFS

EDWARDSVILLE — A free concert will be presented at 3 p.m. Sunday at First Presbyterian Church, 237 N. Kansas Street, featuring Beverly Field, cello, Marion Lampe, piano, and Robert Schieber, violin.

Refreshments will be served after the concert. A free will offering will be collected. For further information, call (618) 656-4550.

ALTON — "The Gift of Marriage" series will begin at 4:30 p.m. Sunday at Bethesda Temple Church of Alton, 918 East 5th Street. Presenters will be pastors Lawrence and Tanya Brown, who have been at the church for 24

noon to 2:30 p.m. Saturday, March 21, at Greater St. James Baptist Church.

The speaker's focus will be on women and preventive health issues. Refreshments will be served and all community women are invited to attend. For more information, contact evangelist Rosa Thomas-Webb, (618) 462-9137.

ALTON — Encounter will host its annual prime rib dinner with two seating times, 4 and 7 p.m., Saturday, March 21, at Main Street United Methodist Church, 1400 Main Street.

No tickets will be sold at the door. Tickets are

FROM PAGE B1  
the message of their music.

"If people cannot understand your songs and really feel them, you have not done your job as a songwriter," Chris said.

Their father was a Vietnam veteran who worked in law enforcement and retired from the U.S. Department of Defense. Their blue-collar upbringing taught the Sable brothers straightforward small-town farm and family values that shine through in their own style of country music, they said.

The Sables have performed with artists such as James Taylor, Darius

than 300 performances each year and performing for more than 500,000 fans in the last five years. Sable tours throughout the United States, Europe, Canada and Mexico, and has performed for American troops on USO tours.

"Raised on the Radio" charted nationally on New Music Weekly, Independent Music Network and Music Row's country charts. The single went all the way to the top, attaining the No. 1 ranking on the Independent Music Network chart and No. 12 on the Indie Country chart for New Music Weekly.

Other members of Sable include Mike

Downing on sax, midi wind controller and vocals. Mike was a studio and club musician in Nashville prior to joining Sable. Rounding out the group on drums is Jake Hanselman, who has performed with Harry

Connick Jr., Koko Taylor, Gregory Hines and Gladys Knight, just to name a few.

Visit [www.sablecountry.com](http://www.sablecountry.com) for more information.

[jill\\_moon@thetelegraph.com](mailto:jill_moon@thetelegraph.com)

## SABLE

We Have Money To Loan

Alton Bell Community  
Est. 1940

Credit Union

2 W. Broadway, Alton, Illinois • (618) 462-3413  
[www.altonbellcu.com](http://www.altonbellcu.com)