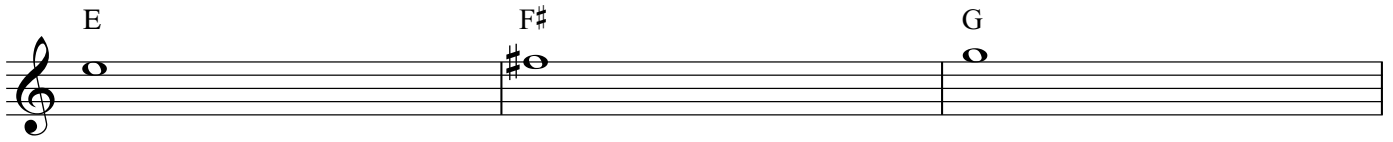


Guitar Class

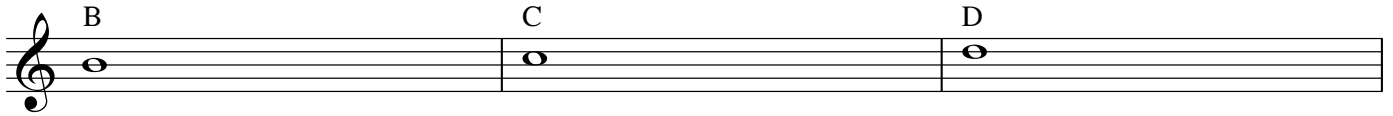
E minor and G Major scales

Douskalis

1st string



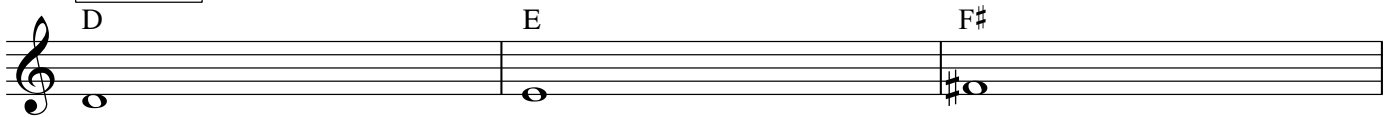
2nd string



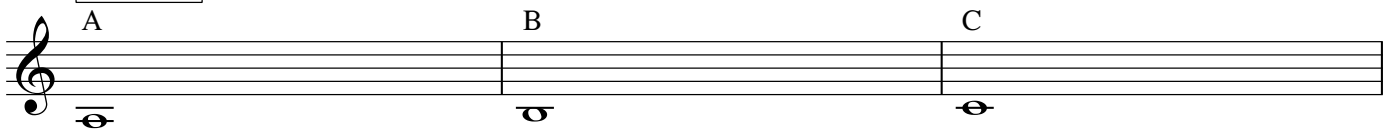
3rd string



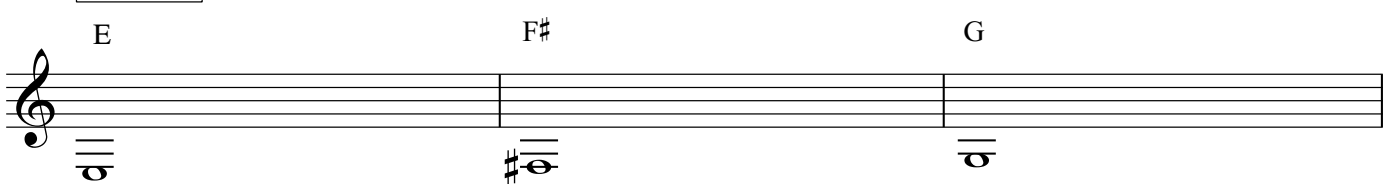
4th string



5th string



6th string



E minor scale

6th string 5th string 4th string

E F# G A B C D E F#

3rd string 2nd string 1st string

G A B C D E F# G

G Major scale

6th string 5th string 4th string 3rd string

G A B C D E F# G

2nd string 1st string

A B C D E F# G

E minor scale using half-notes fig. 1

E minor scale using half-notes fig.2

Two staves of musical notation for the E minor scale using half-notes figure 2. The first staff shows the ascending scale: E4, F#4, G4, A4, B4, C5, D5, E5. The second staff shows the descending scale: E5, D5, C5, B4, A4, G4, F#4, E4.

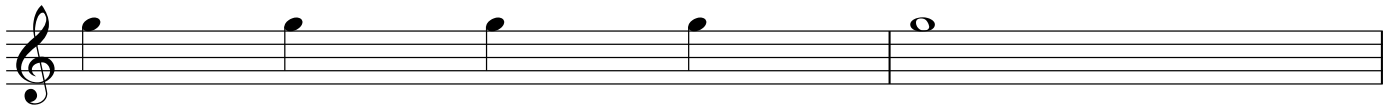
G Major scale using half-notes fig.1

Two staves of musical notation for the G Major scale using half-notes figure 1. The first staff shows the ascending scale: G4, A4, B4, C5, D5, E5, F#5, G5. The second staff shows the descending scale: G5, F#5, E5, D5, C5, B4, A4, G4.

G Major scale using half-notes fig.2

Two staves of musical notation for the G Major scale using half-notes figure 2. The first staff shows the ascending scale: G4, A4, B4, C5, D5, E5, F#5, G5. The second staff shows the descending scale: G5, F#5, E5, D5, C5, B4, A4, G4.

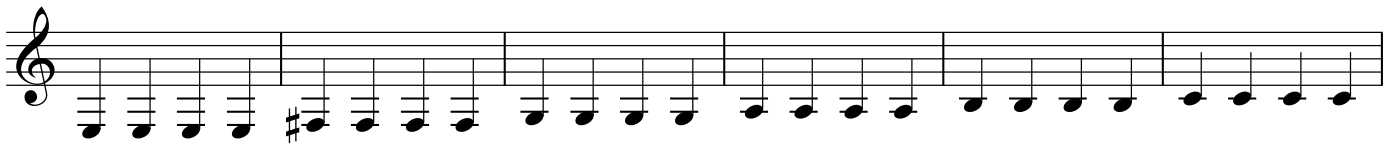
G Major scale using quarter-notes fig.1



G Major scale using quarter-notes fig.2



E minor scale using quarter-notes fig.1



E minor scale using quarter-notes fig.2

A single staff of music in treble clef showing the E minor scale using quarter notes. The notes are E4, F4, G4, A4, B4, C5, D5, and E5. The first four notes are grouped in pairs with a sharp sign above the first pair. The fifth note has a sharp sign above it, and the sixth note has a sharp sign below it. The seventh note has a sharp sign above it, and the eighth note is a whole note.

E minor scale using eighth-notes fig.1

A single staff of music in treble clef showing the E minor scale using eighth notes, figure 1. The notes are E4, F4, G4, A4, B4, C5, D5, and E5. The first four notes are grouped in pairs with a sharp sign above the first pair. The fifth note has a sharp sign above it, and the sixth note has a sharp sign below it. The seventh note has a sharp sign above it, and the eighth note is a whole note.

A single staff of music in treble clef showing the E minor scale using eighth notes, figure 2. The notes are E4, F4, G4, A4, B4, C5, D5, and E5. The first four notes are grouped in pairs with a sharp sign above the first pair. The fifth note has a sharp sign above it, and the sixth note has a sharp sign below it. The seventh note has a sharp sign above it, and the eighth note is a whole note.

A single staff of music in treble clef showing the E minor scale using eighth notes, figure 3. The notes are E4, F4, G4, A4, B4, C5, D5, and E5. The first four notes are grouped in pairs with a sharp sign above the first pair. The fifth note has a sharp sign above it, and the sixth note has a sharp sign below it. The seventh note has a sharp sign above it, and the eighth note is a whole note.

A single staff of music in treble clef showing the E minor scale using eighth notes, figure 4. The notes are E4, F4, G4, A4, B4, C5, D5, and E5. The first four notes are grouped in pairs with a sharp sign above the first pair. The fifth note has a sharp sign above it, and the sixth note has a sharp sign below it. The seventh note has a sharp sign above it, and the eighth note is a whole note.

A single staff of music in treble clef showing the E minor scale using eighth notes, figure 5. The notes are E4, F4, G4, A4, B4, C5, D5, and E5. The first four notes are grouped in pairs with a sharp sign above the first pair. The fifth note has a sharp sign above it, and the sixth note has a sharp sign below it. The seventh note has a sharp sign above it, and the eighth note is a whole note.

E minor scale using eighth-notes fig.2

A single staff of music in treble clef showing the E minor scale using eighth notes, figure 2. The notes are E4, F4, G4, A4, B4, C5, D5, and E5. The first four notes are grouped in pairs with a sharp sign above the first pair. The fifth note has a sharp sign above it, and the sixth note has a sharp sign below it. The seventh note has a sharp sign above it, and the eighth note is a whole note.

G Major scale using eighth-notes fig.1



G Major scale using eighth-notes fig.2

