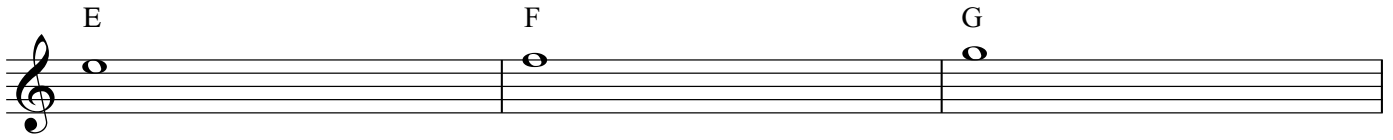


Guitar Class

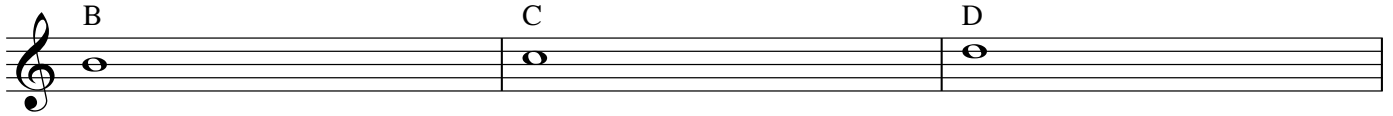
A minor and C Major scales

Douskalis

1st string



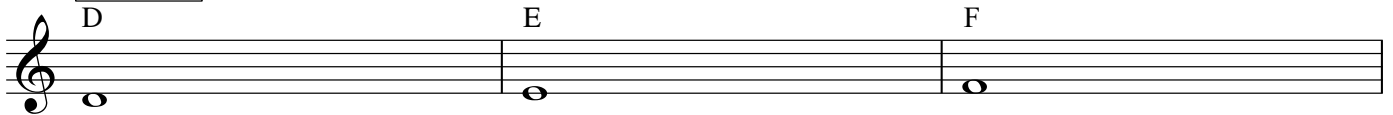
2nd string



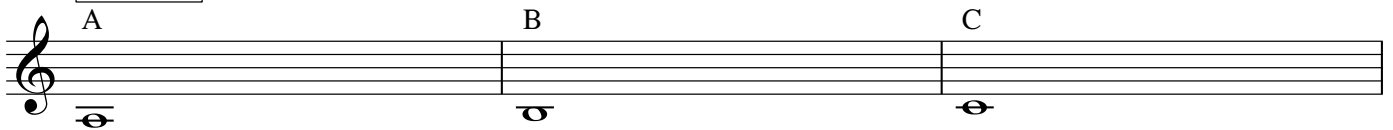
3rd string



4th string



5th string



A minor scale

Musical notation for the A minor scale on a guitar. The scale is presented in two lines of six measures each, with notes represented by whole notes on a treble clef staff. The notes are: A, B, C, D, E, F in the first line; and G, A, B, C, D, E, F, G in the second line. String assignments are indicated in boxes above the notes: 5th string (A), 4th string (D), 3rd string (G), 2nd string (B), and 1st string (E).

C Major scale

Musical notation for the C Major scale on a guitar. The scale is presented in two lines of six measures each, with notes represented by whole notes on a treble clef staff. The notes are: C, D, E, F, G, A in the first line; and B, C, D, E, F, G in the second line. String assignments are indicated in boxes above the notes: 5th string (C), 4th string (D), 3rd string (G), 2nd string (B), and 1st string (E).

A minor scale using half-notes fig.1

Two staves of musical notation for the A minor scale using half-notes figure 1. The first staff shows the ascending scale: A2, A2, B2, B2, C3, C3, D3, D3, E3, E3, F3, F3, G3, G3, A3. The second staff shows the descending scale: A3, G3, F3, E3, D3, C3, B2, A2, A2, B2, C3, D3, E3, F3, G3, A3.

A minor scale using half-notes fig.2

Two staves of musical notation for the A minor scale using half-notes figure 2. The first staff shows the ascending scale: A2, B2, C3, D3, E3, F3, G3, A3. The second staff shows the descending scale: A3, G3, F3, E3, D3, C3, B2, A2, A2, B2, C3, D3, E3, F3, G3, A3.

C Major scale using half-notes fig.1

Two staves of musical notation for the C Major scale using half-notes figure 1. The first staff shows the ascending scale: C4, C4, D4, D4, E4, E4, F4, F4, G4, G4, A4, A4, B4, B4, C5. The second staff shows the descending scale: C5, B4, A4, G4, F4, E4, D4, C4, C4, D4, E4, F4, G4, A4, B4, C5.

C Major scale using half-notes fig.2

Two staves of musical notation for the C Major scale using half-notes figure 2. The first staff shows the ascending scale: C4, D4, E4, F4, G4, A4, B4, C5. The second staff shows the descending scale: C5, B4, A4, G4, F4, E4, D4, C4, C4, D4, E4, F4, G4, A4, B4, C5.

C Major scale using quarter-notes fig.1



C Major scale using quarter-notes fig.2



A minor scale using quarter-notes fig.1



A minor scale using quarter-notes fig.2

