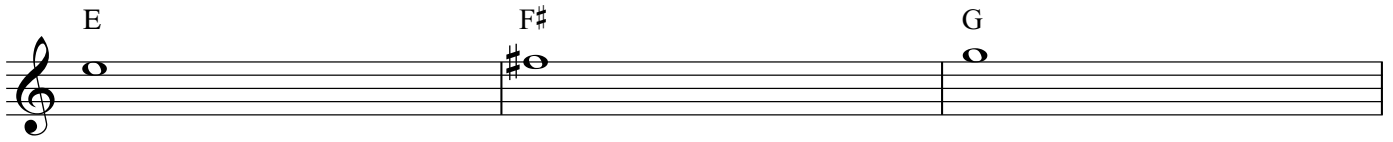


# Guitar Class

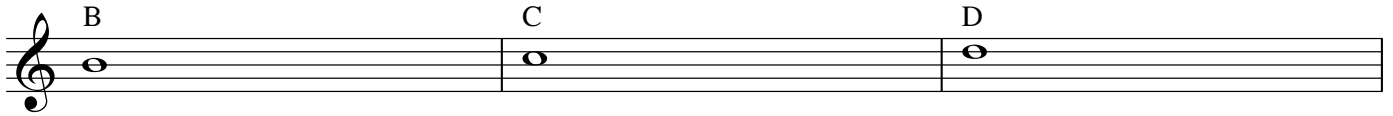
## E minor and G Major scales

Douskalis

1st string



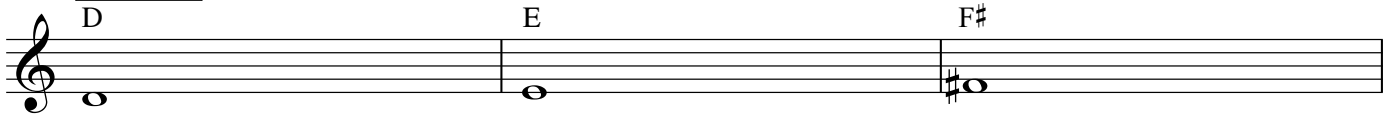
2nd string



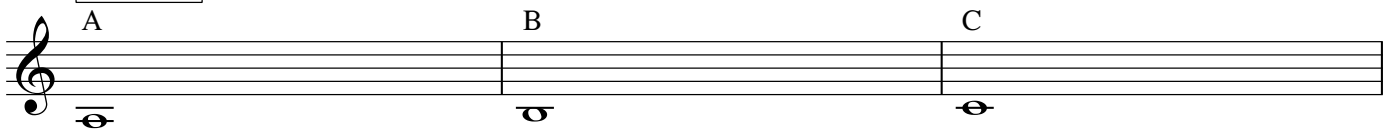
3rd string



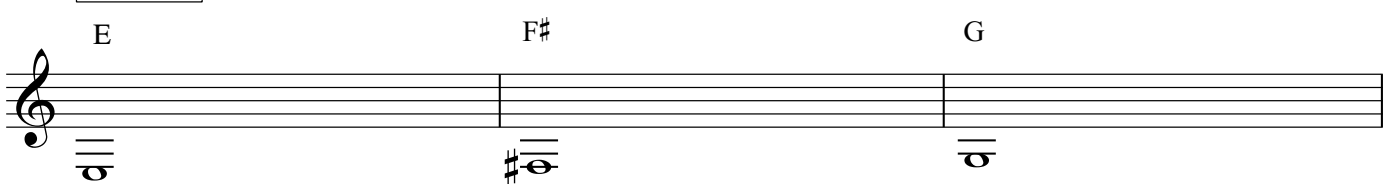
4th string



5th string



6th string



E minor scale

6th string: E, F#, G, A, B, C, D, E, F#

3rd string: G, A, B, C, D, E, F#, G

2nd string: (empty)

1st string: (empty)

Detailed description: This block shows the E minor scale on a guitar. The 6th string is played from the 1st fret (E) to the 7th fret (F#). The 3rd string is played from the 2nd fret (G) to the 4th fret (G). The 2nd and 1st strings are not played. The notes are written as whole notes on a treble clef staff.

G Major scale

6th string: G, A, B, C, D, E, F#, G

2nd string: A, B, C, D, E, F#, G

1st string: (empty)

3rd string: (empty)

Detailed description: This block shows the G Major scale on a guitar. The 6th string is played from the 3rd fret (G) to the 7th fret (G). The 2nd string is played from the 2nd fret (A) to the 4th fret (G). The 1st, 3rd, and 4th strings are not played. The notes are written as whole notes on a treble clef staff.

E minor scale using half-notes fig. 1

Detailed description: This block shows three staves of musical notation for the E minor scale using half-note figures. The first staff shows the 6th string with notes E, F#, G, A, B, C, D, E, F# in half notes. The second staff shows the 3rd string with notes G, A, B, C, D, E, F#, G in half notes. The third staff shows the 2nd string with notes A, B, C, D, E, F#, G in half notes. The 1st and 4th strings are not played.

E minor scale using half-notes fig.2

Two staves of musical notation for the E minor scale using half-notes figure 2. The first staff shows the ascending scale: E4, F#4, G4, A4, B4, C5, D5, E5. The second staff shows the descending scale: E5, D5, C5, B4, A4, G4, F#4, E4.

G Major scale using half-notes fig.1

Two staves of musical notation for the G Major scale using half-notes figure 1. The first staff shows the ascending scale: G4, A4, B4, C5, D5, E5, F#5, G5. The second staff shows the descending scale: G5, F#5, E5, D5, C5, B4, A4, G4.

G Major scale using half-notes fig.2

Two staves of musical notation for the G Major scale using half-notes figure 2. The first staff shows the ascending scale: G4, A4, B4, C5, D5, E5, F#5, G5. The second staff shows the descending scale: G5, F#5, E5, D5, C5, B4, A4, G4.