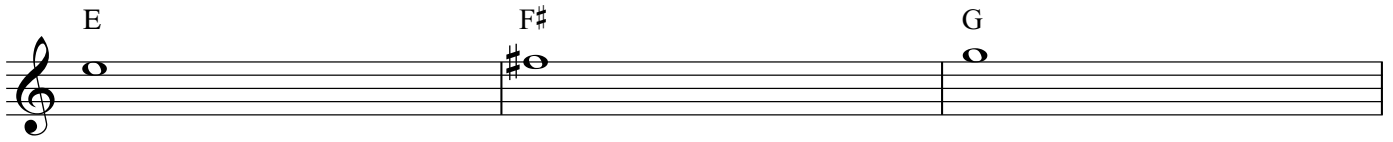


Guitar Class

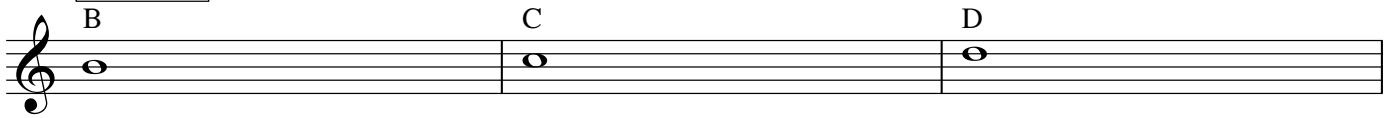
E minor and G Major scales

Douskalis

1st string



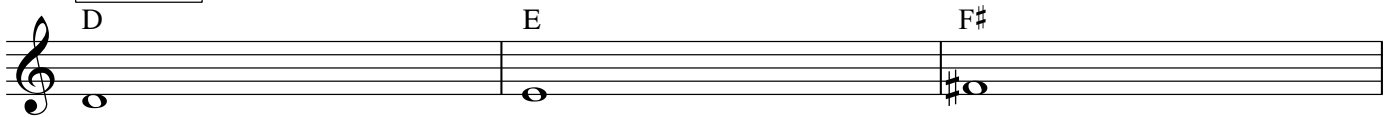
2nd string



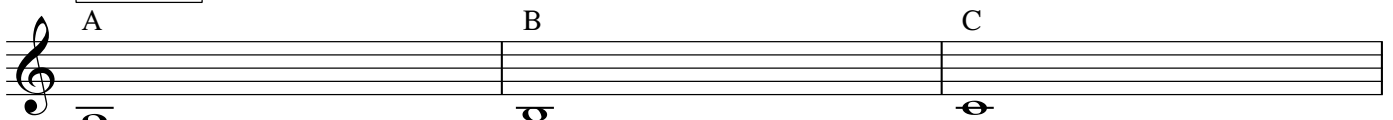
3rd string



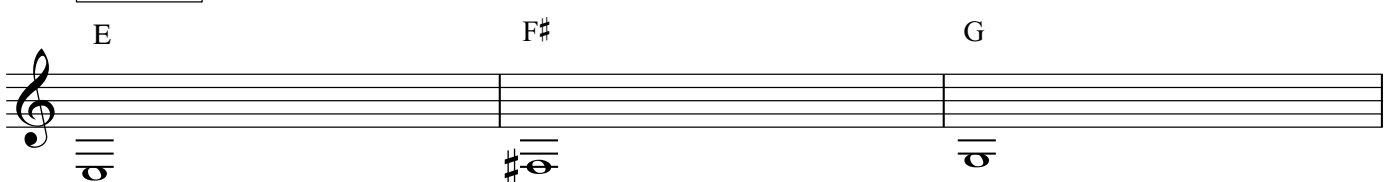
4th string



5th string



6th string



E minor scale

6th string 5th string 4th string

E F# G A B C D E F#

3rd string 2nd string 1st string

G A B C D E F# G

G Major scale

6th string 5th string 4th string 3rd string

G A B C D E F# G

2nd string 1st string

A B C D E F# G

E minor scale using half-notes fig. 1

E minor scale using half-notes fig.2

Two staves of musical notation for the E minor scale using half-notes figure 2. The first staff shows the ascending scale: E4, F#4, G4, A4, B4, C5, D5, E5. The second staff shows the descending scale: E5, D5, C5, B4, A4, G4, F#4, E4.

G Major scale using half-notes fig.1

Two staves of musical notation for the G Major scale using half-notes figure 1. The first staff shows the ascending scale: G4, A4, B4, C5, D5, E5, F#5, G5. The second staff shows the descending scale: G5, F#5, E5, D5, C5, B4, A4, G4.

G Major scale using half-notes fig.2

Two staves of musical notation for the G Major scale using half-notes figure 2. The first staff shows the ascending scale: G4, A4, B4, C5, D5, E5, F#5, G5. The second staff shows the descending scale: G5, F#5, E5, D5, C5, B4, A4, G4.

G Major scale using quarter-notes fig.1

Musical notation for G Major scale using quarter notes, figure 1. It consists of four staves. The first staff shows the scale in a broken position (G4, A4, B4, C5, B4, A4, G4). The second staff shows the scale in a half-position (G4, A4, B4, C5). The third staff shows the scale in a whole-position (G4, A4, B4, C5). The fourth staff shows the G4 note sustained for four measures.

G Major scale using quarter-notes fig.2

Musical notation for G Major scale using quarter notes, figure 2. It consists of one staff showing the scale in a broken position (G4, A4, B4, C5, B4, A4, G4).

E minor scale using quarter-notes fig.1

Musical notation for E minor scale using quarter notes, figure 1. It consists of three staves. The first staff shows the scale in a broken position (E4, F4, G4, A4, B4, C5, B4, A4, G4, F4, E4). The second staff shows the scale in a half-position (E4, F4, G4, A4, B4, C5). The third staff shows the scale in a whole-position (E4, F4, G4, A4, B4, C5).

E minor scale using quarter-notes fig.2

