

Contra Alto Clarinet in Eb
Contra Alto Clarinet in Eb
Contra Alto Clarinet in Eb
Contra Alto Clarinet in Eb
Contra Alto Clarinet in Eb

Quintet

Steven Zeluck
65,3

♩ = 150

5

10 All rights Reserved 2018

14

18

22

26

31

37

Contra Alto Clarinet in Eb
Contra Alto Clarinet in Eb
Contra Alto Clarinet in Eb
Contra Alto Clarinet in Eb
Contra Alto Clarinet in Eb

Contra Alto Clarinet in Eb

Musical score for the first page of the Contra Alto Clarinet part, measures 1-95. The score is written in treble clef with a key signature of one flat (Bb) and a 2/4 time signature. It features various rhythmic patterns, including eighth and sixteenth notes, and rests. Measure numbers 46, 50, 65, 76, 80, 83, 86, 90, and 95 are indicated at the start of their respective staves. A double bar line with the number 11 is present in measure 50, and another with the number 6 is present in measure 65.

Contra Alto Clarinet in Eb
Contra Alto Clarinet in Eb
Contra Alto Clarinet in Eb
Contra Alto Clarinet in Eb
Contra Alto Clarinet in Eb

Contra Alto Clarinet in Eb

3

Musical score for the second page of the Contra Alto Clarinet part, measures 103-146. The score continues from the first page. Measure numbers 103, 112, 116, 122, 127, 132, 138, and 146 are indicated at the start of their respective staves. A double bar line with the number 5 is present in measure 103, and another with the number 2 is present in measure 116. A section labeled 'A' in a box begins in measure 138. Trills are indicated with a 'tr' symbol and a wavy line above the notes in measures 138 and 146. A small orange dashed box is located at the end of the page.

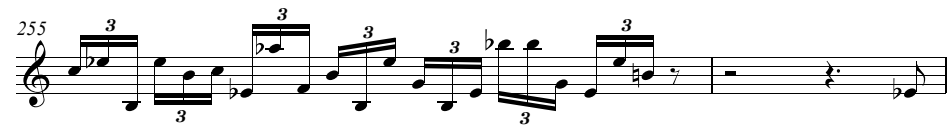
Contra Alto Clarinet in Eb
Contra Alto Clarinet in Eb

Contra Alto Clarinet in Eb



Contra Alto Clarinet in Eb
Contra Alto Clarinet in Eb
Contra Alto Clarinet in Eb
Contra Alto Clarinet in Eb

Contra Alto Clarinet in Eb



Contra Alto Clarinet in Eb
Contra Alto Clarinet in Eb
Contra Alto Clarinet in Eb
Contra Alto Clarinet in Eb
Contra Alto Clarinet in Eb

Contra Alto Clarinet in Eb

