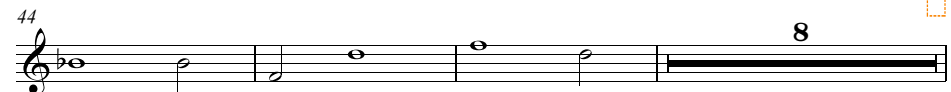
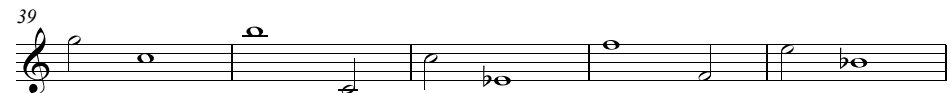
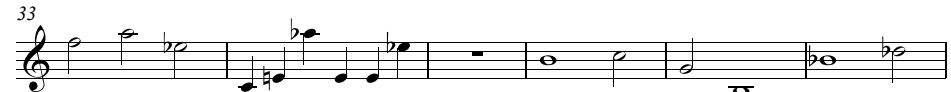
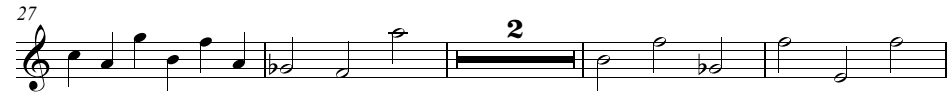


# Trio - 68,3B

♩ = 175

Steven Zeluck  
68, 3B



♩ = 220

55

60

65

71 Prime Row 11

76

81

86

91

96

101

108

113 tr

118 6

129 Prime Row 11

134 2

140

145 2

151 6

159  

165 

171 

177 

184 

188 

194  Prime Row 11

203 

208  Prime Row 11 Prime Row 11

213 

218 

223 

228 

234 

241 

246 

251 

254  

Musical score for page 6, measures 260-312. The score is written in treble clef with a key signature of one flat (B-flat). It features various rhythmic patterns and articulations. Measure 260 is marked with a small orange box. Measure 264 includes a 'Prime Row 11' label. Measure 268 has two '2' markings above the staff. Measure 276 has an '8' marking above the staff. Measure 288 has a '3' marking above the staff. Measure 293 has a '3' marking above the staff. Measure 300 has a '4' marking above the staff. Measure 307 has a '4' marking above the staff. Measure 312 has a '4' marking above the staff. A tempo marking of  $\text{♩} = 175$  is located between measures 264 and 268.

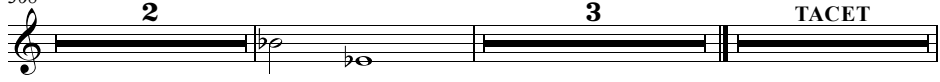
Musical score for page 7, measures 320-359. The score is written in treble clef with a key signature of one flat (B-flat). It features various rhythmic patterns and articulations. Measure 320 is marked with a 'Prime Row 11' label. Measure 324 has a '2' marking above the staff. Measure 329 is marked with a 'Prime Row 11' label. Measure 334 is marked with a 'Prime Row 11' label. Measure 339 has a '6' marking above the staff. Measure 348 has a '2' marking above the staff. Measure 354 has a '2' marking above the staff. Measure 359 has a '2' marking above the staff. A tempo marking of  $\text{♩} = 220$  is located between measures 334 and 339. Measure 359 is marked with a small orange box.

365 Prime Row 11



A musical staff in treble clef with a key signature of one flat (Bb). The melody consists of the following notes: Bb4, C5, D5, E5, F5, G5, Ab5, Bb5, C6, D6, E6, F6, G6, Ab6, Bb6, C7. The notes are mostly quarter notes, with a half note for the final C7.

368



A musical staff in treble clef with a key signature of one flat (Bb). The staff contains three performance markings: a first ending bracket labeled '2', a second ending bracket labeled '3', and a final section labeled 'TACET'.