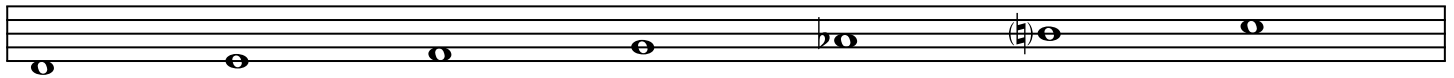


Diatonic to Harmonic Major

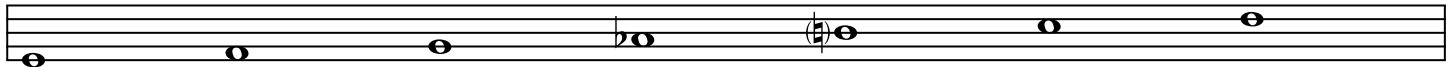
CMaj7#5 CMaj7^{b13}(^{b9}) E/C



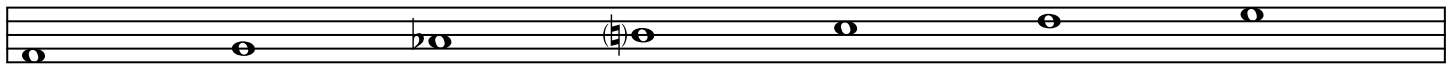
(^{b9})
D-7^{b5}



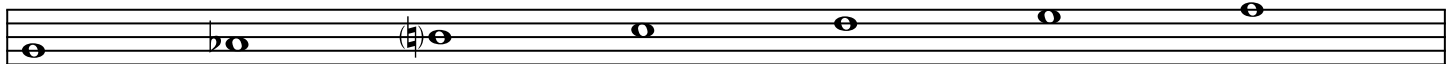
^{b13}
E7^{b9#9}



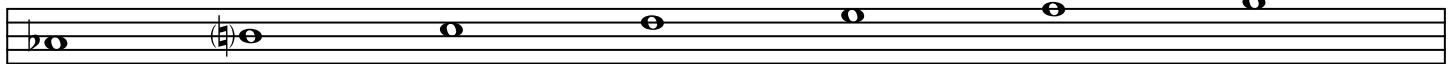
Fm(maj7) F min6 Fm(maj7#11) F^{o7} F^o(maj7)



G 13(^{b9}) G7(^{b9}(sus4))



A^bMaj7#5 A^bMaj7#5^{#9} A^b^{o7} A^b^o(maj7) C/A^b



B^{o7} G 13(^{b9})/B

