

PIANO
LATIN ♩ = 100

STEPPING OUT

FREDRIK LUNDIN

INTRO

Cmaj7(#11)



THEME

5 Gmaj7 D7 Gmaj7 Bb7(b9) Ebmaj7 Am7 D7(b9)



9 Gmaj7 Bb7 Ebmaj7 F#7(b9) Gmaj7 Fm7 Bb7(b9)



13 Ebmaj7 Am7 D7(b9) Gmaj7 C#m7 F#7(b9)



17 Gmaj7 Fm7 Bb7(b9) Ebmaj7 C#m7 F#7



INTERLUD

21 Cmaj7(#11)



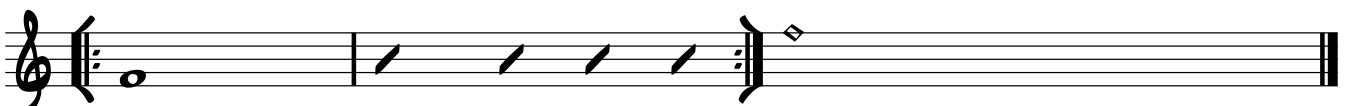
FORM:: INTRO - THEME 2 X'S - INTERLUD

SOLOS ON THEME - END SOLO BY CUEING INTERLUD (OPEN REP.)

THEME OR NEW SOLOIST ON CUE

⊕ ONLY LAST TIME

25 Ebmaj7 Db(add9) OPEN Cmaj7(#11)



FINE