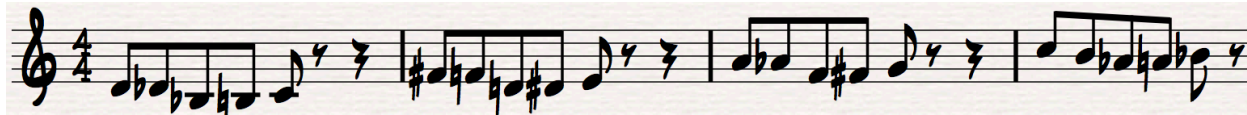




Chromatic Enclosures - Part 2

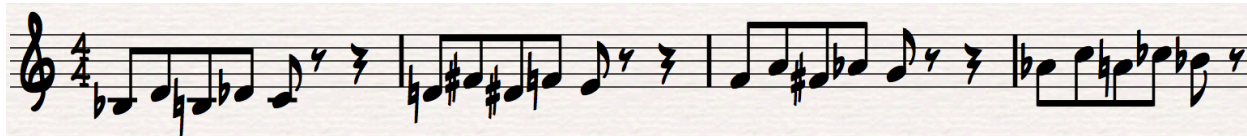
In the previous lesson, we learnt that we can create tension and resolution by surrounding chord tones with chromatic notes. We do not have to surround each target note with two chromatic notes, we could use 2 notes at either side of the target note. For example, if our target note is a C, we could play the following - D Db Bb B **C**. This idea is demonstrated on all of the notes of a C dominant 7 chord below -



These chromatic enclosure notes could be arranged in a variety of ways. We could start a tone below the target note - Bb B D Db **C**.



We could play a tone below - a tone above - a semitone below - a semitone above - target note. For example - Bb D B Db **C**.



Practise experimenting with different combinations and permutations. The possibilities are vast so have fun exploring different sounds.