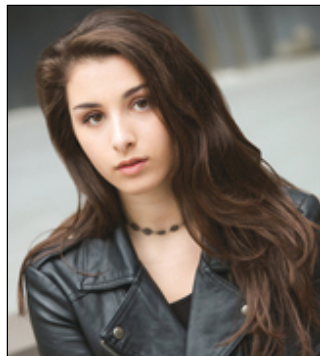


ANNABELLE KEMPF - AEA



Resume

BROADWAY

| | | |
|---------------------------|----------------------------------|---------------------|
| BILLY ELLIOT, THE MUSICAL | Tracey Atkinson/Margaret Gormely | Dir. Stephen Daldry |
|---------------------------|----------------------------------|---------------------|

OFF BROADWAY

| | | |
|--|----------------|-----------------------------|
| LOVE MUSIC SHELTER READING | Gema/Angelica | Alix Schottland |
| PUCELANDIA | Queen Milliken | Turtle Shell Productions |
| DORA THE EXPLORER LIVE! (Nickelodeon Pilot) | The Map | Theatrical Rights Worldwide |

REGIONAL

| | | |
|------------------|-------------------------|-------------------|
| THE WIZARD OF OZ | Lullaby League Munchkin | The Media Theatre |
|------------------|-------------------------|-------------------|

THEATER

| | | |
|---------------------------------------|---------------------------------|--------------------------------|
| GYPSY | Baby June | Footlighter's Theatre |
| THE LITTLE MERMAID JR. (Disney Pilot) | Featured Various | Random Farms Kids Theater |
| THE SOUND OF MUSIC | Gretl (US)/Soloist Vienna Choir | Young Peoples Theatre Workshop |
| ANNIE | Tessie | Young Peoples Theatre Workshop |
| SLEEPING BEAUTY | Maleficent | Young Peoples Theatre Workshop |
| SEUSSICAL THE MUSICAL | Thing 2 | Players Club Swarthmore |

INTERNET/FILM/TV

| | | |
|----------------------------------|---------------------------------|------------------------|
| MILLENIALS LIST DAILY CHALLENGES | Self | A Plus Media |
| GOOD MORNING AMERICA | Spokesperson Holiday Coat Drive | ABC/Broadway Kids Care |

| | | |
|---------------------------|---------------------------|------------------------|
| INSTRUMENTAL ARTISTS | Cover Song Artist/YouTube | Warner Music Group |
| RUSSIAN BROADWAY SHUTDOWN | Russian Child | John Walton West |
| BILLY IS... (Documentary) | Self | NBC Universal |
| BLINDFOLD | Supporting | Dir: Teace Snyder |
| FLABULOUS (Webisode) | Supporting | Dir. Katie Madonna Lee |
| LITTLE MISS MATCHED EVENT | Promotional Event | SpotCo. |

MUSIC/RECORDINGS

| | | |
|---|-----------------------------------|------------------------|
| POISON (Original) EP | iTunes & Spotify | Producer Joe Nicolo |
| WITH A LITTLE HELP FROM MY FRIENDS | Broadway Records Recording Artist | Jonathan Estabrooks |
| 'MOVE ON' (Original) LYRICS/COMPOSITION | Placement in 'Zeroes' Soundtrack | Jason Loftus |
| 'YOU LOST ME' MUSIC VIDEO | Recording Artist/YouTube | Dir Leon Sanginiti Jr. |

CABARETS/LIVE SHOWS/BENEFIT FUNDRAISERS

| | | |
|-----------------------------------|-------------------------|-----------------------------|
| 54 BELOW: YOUNG VOICES FOR CHANGE | Soloist | Dir. Badiene Magaziner |
| SYMPHONY SPACE | Soloist | Lyrics for Life Concert |
| THE WORLD CAFE LIVE | Solo Performance | World Cafe Live WXPB Phila. |
| THE BITTER END | Singer-Songwriter Night | Live Set-Various Dates |
| THE CUTTING ROOM | Soloist | Cabaret for a Cause |

PRINT

| | | |
|---------------------------|-------------|----------------------------|
| STUDENT PORTRAITS PROJECT | Model | Jessica Rachel Photography |
| KORESH DANCE CO. AD | Hip-Hop Kid | Gabriel Bienczycki |

OTHER APPEARANCES

| | | |
|-----------------------------------|--|--------------------------------|
| THE 23rd ANNUAL GYPSY OF THE YEAR | Cast of Billy Elliot | Eric Gunhus & David Koch |
| ONLY MAKE BELIEVE BROADWAY GALA | BKC/EFA | The Jacobs Theater/Dir. Joe Di |
| NATIONAL DANCE APPRECIATION MONTH | Promo/Alvin Ailey American Dance Theater | Spot Co. |
| TRIBECA FILM FESTIVAL(Family Day) | Soloist | New American Youth Ballet |

VOICE:

| | | |
|------------------|-----------------------|---------|
| Vocal Instructor | Badiene Magaziner | Private |
| Vocal Coach | Michael J. Moritz Jr. | Private |

ACTING:

| | | |
|--------------|-------------------|---------------|
| Marc Lewis | Acting Coach | Private |
| Diane Hardin | Acting Instructor | Group Classes |

| | | |
|---------------------------|-------------------|-------------------------------|
| Mark Schneider | Improvisation | Group Classes |
| Lane Napper | Acting Instructor | Improv/Dialogue-Private Group |
| The Studio | Katie Cappiello | Scene Monologue Study |
| The Performing Option | Madelyn Burns | Commercial Group |
| OneOnOne | Workshops | Various |
| Broadway Artists Alliance | Acting Intensive | Musical Theater |

DANCE:

| | | |
|----------------|----------------------------------|-----------------------------|
| Open Classes: | Broadway Dance Center | Tap, Hip-Hop, Jazz, Modern |
| Open Classes: | Koresh Dance Co. School of Dance | Modern, Ballet, Street Funk |
| Dance Molinari | Janine Molinari | Tap/Jazz/Theatre Dance/MVP |

Annabelle is an 19 year old girl with a diverse vocal ability to sing many genres. She is able to play a wide range of characters & ages. Please check out more media clips and videos on her YT Channel!
<https://www.youtube.com/c/AnnabelleKempf>

Physical Characteristics / Measurements

| | | |
|-------------------|-------------------|-------------|
| Height: 5'2" | Weight: 125 lbs | Eyes: Brown |
| Hair Color: Brown | Hair Length: Long | |

Swimming - freestyle, Yoga, Dance Hip Hop, Dance Jazz, Dance Modern, Dance Tap, Guitar, Impressionist, Improvisation, Licensed Driver, Piano, Singer, Ukulele, Vocal Range: Soprano, Vocal Style: Legit, British - BBC English Accent, British - Cockney Accent, British - Geordie Accent, Italian Accent, Philadelphia Accent, Russian Accent