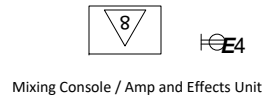


the wise guys

1. Vocals & Guitar - Randy Colton
2. Vocals & Guitar - Jeff Curran
3. Vocals & Hand Percussion - Jeb Reid
4. Vocals, Guitar & Keyboards - Mike Harris
5. Vocals, Guitars & Effects - Brad McPherson
6. Bass - Chris Greenley
7. Vocals & Percussion - Jeff Hanes
8. Sound

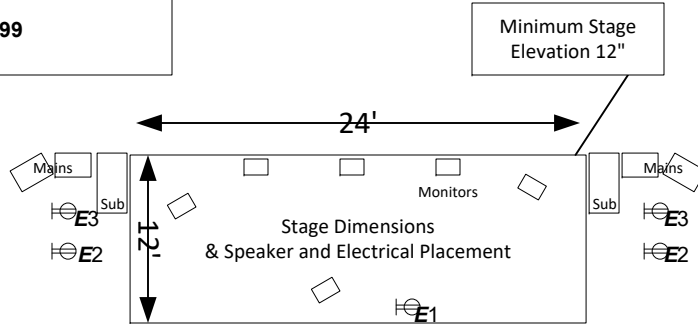
Technical Contact:
Brad McPherson 405-615-5999



the wise guys

Stage Diagram
 Electrical / mechanical Chart

See Expanded Stage View Below



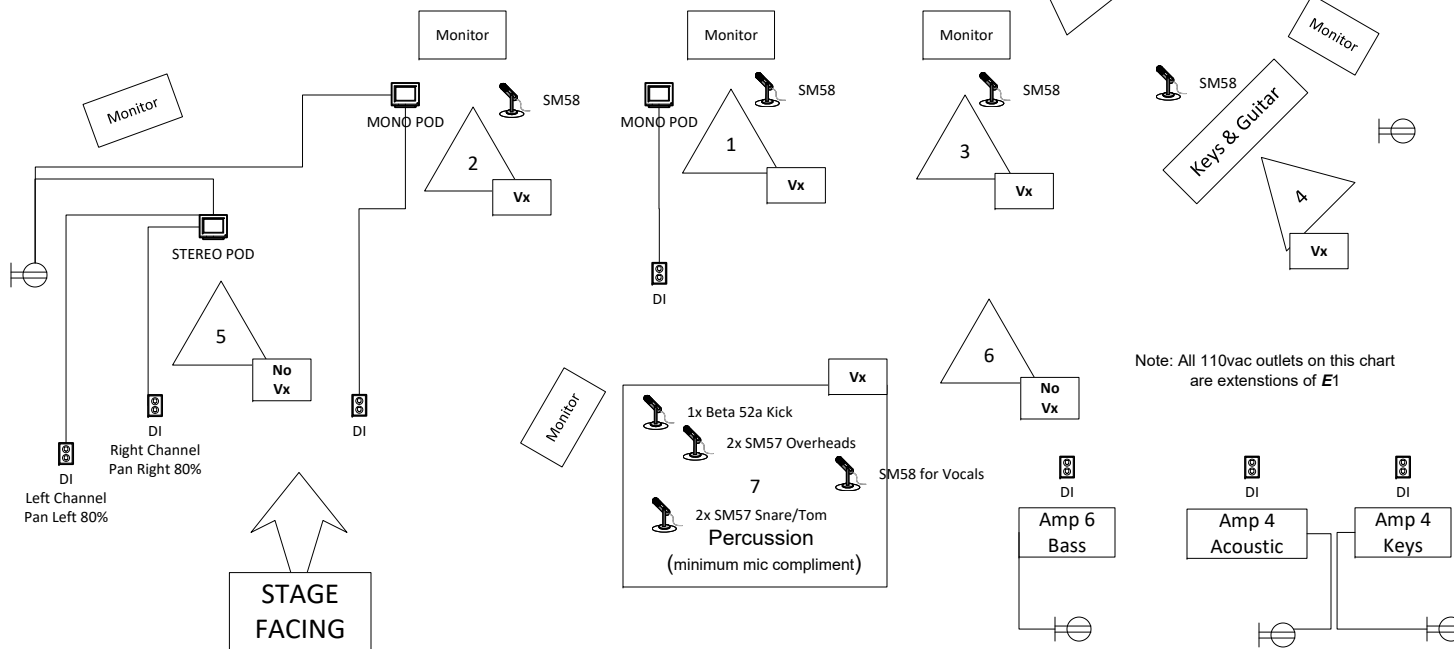
- # = Band Member
- ⊖ = 110v Outlet
- Ⓛ = Direct Box to Mixer - Include both 1/4" & XLR
- 🎤 = Microphone

Power Requirements

Voltage 110VAC
 Wise Guys System

- Backline: 1 @ 1 amp - E1
- Lights: 2 @ 15 amp - E2
- Mains/
Subs: 2 @ 20 amp - E3
- Mixing
Console: 1 @ 15 amp - E4

See Electrical Placement on Diagram Above Left



Note: Preferred mics are Shure, however equivalent mics can be used