



# SHUTTLE BUS FEES

Fees will be on a per person basis but will be capped when two or more travellers are picked up or dropped off to the same household/pickup/drop-off point.

eg: six passengers picked up from a single address in Ocean Shores – Total one way fare \$18

*There will be a 50% Discount for passengers who qualify for a Seniors Card. Seniors discounts on groups only apply if all group members are seniors.*

GREEN ZONE	\$3
YELLOW ZONE	\$6
RED ZONE	\$9

Fares are one way and payable on arrival or before departure from the Club.

Tokens will be issued by the driver for presentation at the bar for trips to the club.

Receipts will be issued by the bar for presentation to the driver for trips from the club.

## Boundaries

### North East

- The town of Billinudgel
- North Ocean Shores

### South East

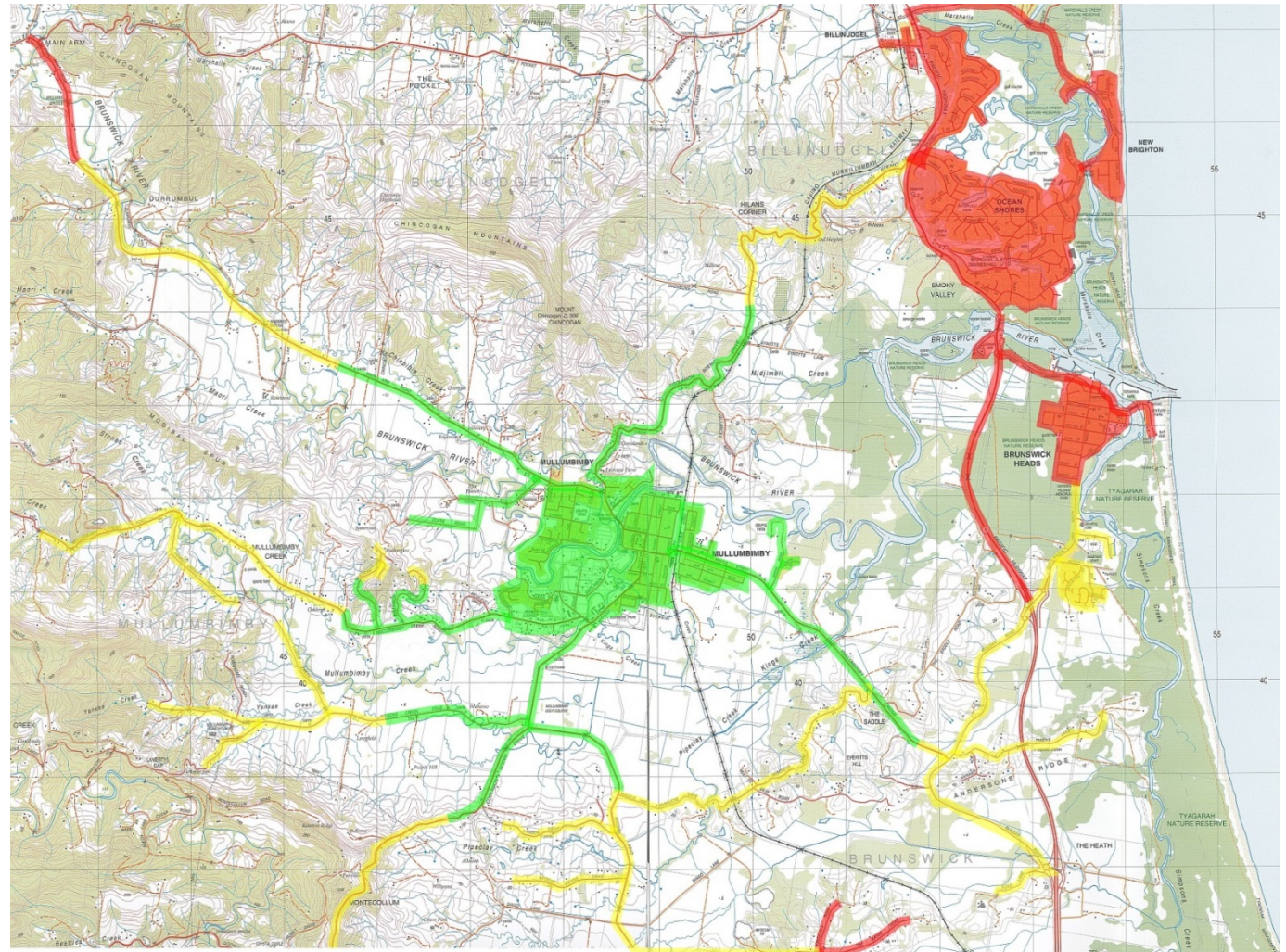
- Junction of Gulgan Road with Pacific Motorway

### South

- Myocum Road and James Lane
- Junction of Coolamon Scenic Drive and Goonengerry Road

### West

- Laverty's Gap
- Alidenes Road & Bullgarra Road
- Left Bank Road & Frasers Road
- Main Arm Village



## Rationale

The club bus has been offered as a free service since its inception. Records show that the service is used by less than 5% of our members.

Provision of a club bus service costs the Club over \$700 per week in running costs and wages. This amount excludes vehicle replacement costs.

From 1 August 2017 the Club will be imposing a charge for the service in recognition of the expense incurred in its provision.

---

## Legals

As the bus is owned by the club and operated by club staff it is not considered public transport. It is therefore not subject to government regulation under the *Passenger Transport Act 1990*. Fees for service may be applied.

A driver of a small bus **not providing a public passenger service** under the Passenger Transport Act 1990 is required to fully comply with the child restraint laws and must ensure that all passengers under 7 years old are appropriately restrained in an approved child restraint or booster seat.

The Club maintains insurance policies covering the Club and its operations. This extends to the operation of the shuttle bus service.

## Shuttle Bus: Terms and Conditions

- The Shuttle Bus is for Members, their Guests and Temporary Members of Mullumbimby Ex-Services Club only.
- Members, their Guests and Temporary Members are only permitted to use the bus if they intend to immediately patronise or have immediately patronised either the Ex-Services Club or the Bowling Club for at least 90 minutes. This condition will be monitored by staff and people found to be abusing this condition will be excluded from using the Shuttle Bus service.
- Pick up and drop off points are at the place of residence or a meeting point nearby. The Shuttle Bus service is not provided for any in bound destination other than those affiliated with Mullumbimby Ex-Services Club.
- Rules and regulations which apply within the facilities of Mullumbimby Ex-Services Club, extend to the confines of the Shuttle Bus. The driver is authorised to eject from the bus any person in breach of Mullumbimby Ex-Services Club Rules and Regulations.
- Offensive language, objectionable behaviour and smoking are not permitted on the Shuttle Bus.
- In accordance with NSW Child Restraint laws, children under the age of seven (7) years are not permitted on the Shuttle Bus without approved restraints. The Club does not provide restraints.

- The bus is fitted with an approved attachment points for attaching restraints.
- All bookings are to be made with reception for pick-ups and drop offs.
- Homeward bookings must be made no later than one (1) hour before advertised closing time. Bookings made later may not be able to be honoured.
- Announcements will be made regarding departure times and direction of travel where possible.
- The bus will not operate beyond staff rostered times. This must be considered when booking late drop offs.
- Every attempt will be made to adhere to booked times but times may vary without notice.
- Routes may be altered at the discretion of the driver
- Travel on unpaved or rough roads will be at the discretion of the driver.
- Travel will be offered to patrons within the shaded area of the map only.
- Terms and conditions may be varied as required.