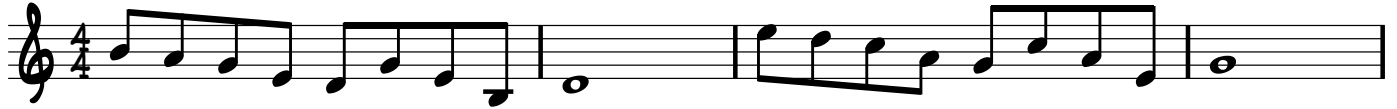


PENTATONIC FUNCTIONS

PIANO

CMA7, FMA7#11, DSUS, G7.
AM7, EM7, Db7ALT

FMA7, BbMA7#11, GSUS, C7.
DM7, AM7, Gb7ALT



BbMA7, EbMA7#11, CSUS, F7.
GM7, DM7, B7ALT

EbMA7, AbMA7#11, FSUS, Bb7.
CM7, Gm7, E7ALT



AbMA7, DbMA7#11, Bbsus, Eb7.
FM7, CM7, A7ALT

DbMA7, GbMA7#11, Ebsus, Ab7.
Bbm7, Fm7, D7ALT



GbMA7, BMA7#11, Absus, Db7.
EbM7, Bbm7, G7ALT

BMA7, EMA7#11, Dbsus, Gb7.
AbM7, EbM7, C7ALT



EMA7, AMA7#11, Gbsus, B7.
DbM7, AbM7, F7ALT

AMA7, DMA7#11, Bsus, E7.
Gbm7, Dbm7, Bb7ALT



DMA7, GMA7#11, Esus, A7.
Bm7, Gbm7, Eb7ALT

GMA7, CMA7#11, Asus, D7.
Em7, Bm7, Ab7ALT

