

### Specifications

MODEL	Z-62/40	
Measurements	US	Metric
Working height maximum*	67 ft 11 in	20.87 m
Platform height maximum	61 ft 11 in	18.87 m
Horizontal reach maximum	40 ft 11 in	12.47 m
Up and over clearance maximum	26 ft 8 in	8.13 m
<b>A</b> Platform length - 8 ft / 6 ft model	3 ft / 2 ft 6 in	0.91 m / 0.76 m
<b>B</b> Platform width - 8 ft / 6 ft model	8 ft / 6 ft	2.44 m / 1.83 m
<b>C</b> Height - stowed	8 ft 6 in	2.56 m
Height - transport (jib tucked under)	9 ft 6 in	2.90 m
<b>D</b> Length - stowed	30 ft 4 in	9.25 m
Length - transport (jib tucked under)	24 ft 10.5 in	7.58 m
<b>E</b> Width	8 ft 2 in	2.49 m
<b>F</b> Wheelbase	8 ft 3 in	2.51 m
<b>G</b> Ground clearance - center	1 ft 2.5 in	0.37 m

### Productivity

Lift capacity	500 lbs	227 kg
Platform rotation	160°	
Vertical jib rotation	135°	
Turntable rotation	360° continuous	
Turntable tailswing	zero	
Drive speed - stowed	3.0 mph	4.8 km/h
Drive speed - raised**	0.68 mph	1.1 km/h
Gradeability - 2WD - stowed***	25%	25%
Gradeability - 4WD - stowed***	45%	45%
Turning radius - inside	7 ft 9 in	2.36 m
Turning radius - outside	18 ft 2 in	5.54 m
Controls	12V DC proportional	
Tires	355/55D 625	

### Power

Power source	48 hp (35.79 kW) Deutz diesel T4f D2.9L4*****	
	48 hp (35.79 kW) Perkins diesel T4f 404F-22*****	
	75 hp (56 kW) Ford gas/LPG MSG425	
Auxiliary power unit	12V DC	
Hydraulic tank capacity	35 gal	132.5 L
Fuel tank capacity - diesel	35 gal	132.5 L
- gas	20 gal	75.7 L

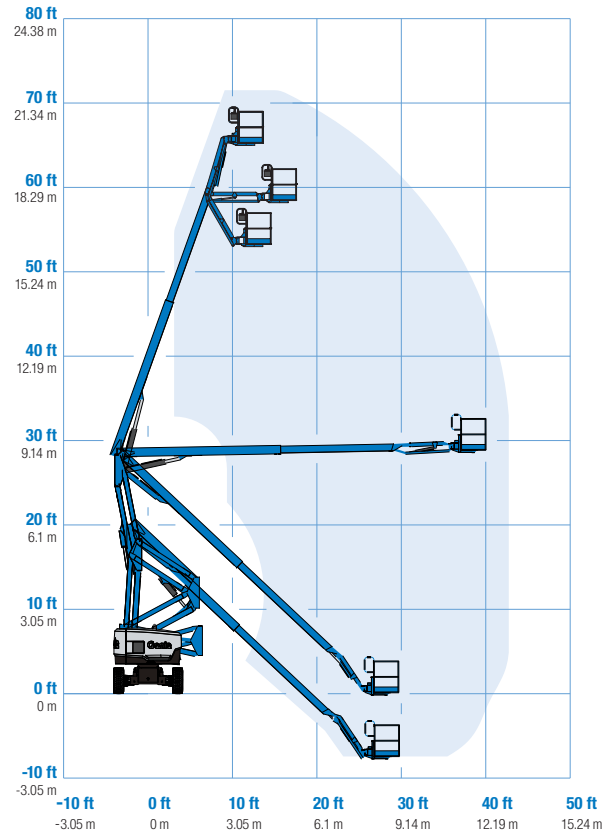
### Weight\*\*\*\*

	22,155 lbs	10,050 kg
--	------------	-----------

### Standards Compliance

ANSI A92.5, CSA B354.4, EN 280, AS 1418.10

### Range Of Motion Z-62/40



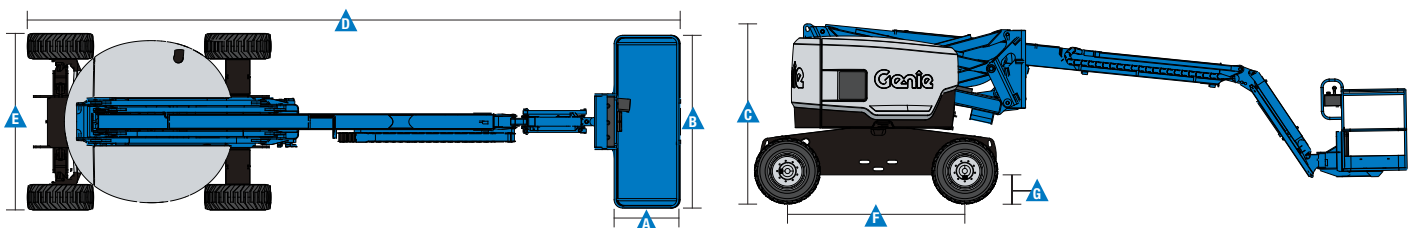
\* The metric equivalent of working height adds 2 m to platform height. U.S. adds 6 ft to platform height.

\*\* In lift mode (platform raised), the machine is designed to operate on firm, level surfaces only.

\*\*\* Gradeability applies to driving on slopes. See operators manual for details regarding slope ratings.

\*\*\*\* Weight will vary depending on options and/or country standards.

\*\*\*\*\* Tier 4f engines available in US only.



## Features

### Standard Features

#### Measurements

- 67 ft 11 in (12.87 m) working height
- 40 ft 11 in (12.47 m) horizontal reach
- 26 ft 8 in (8.13 m) up and over clearance
- Up to 500 lbs (227 kg) lift capacity

#### Productivity

- Self-leveling platform
- Hydraulic platform rotation
- Proportional joystick controls
- Drive enable
- AC power cord to platform
- Horn
- Hour meter
- Tilt alarm
- Descent alarm
- Zero tailswing
- 360° continuous turntable rotation
- Locking turntable covers
- Positive traction drive
- 2 speed wheel motors
- Hydraulic oil cooler
- Telematics ready connector

#### Power

- 12V DC auxiliary power
- Engine protection package
- Anti-restart engine protection
- Auto engine fault shutdown
- Intake air heater (Deutz engine)

### Easily Configured To Meet Your Needs

#### Platform Options

- Steel 8 ft (2.44 m) (standard)
- Steel 6 ft (1.83 m)
- Steel 8 ft (2.44 m) tri-entry\*\*

#### Jib

- 5 ft (1.52 m) jib boom

#### Engine Options

- 48 hp (35.79 kW) Deutz diesel T4f\* (standard)
- 48 hp (35.79 kW) Perkins diesel T4f\*
- 75 hp (56 kW) Ford gas/LPG

#### Drive Options

- 2WD
- 4WD

#### Axle Options

- Active oscillation (standard on 4WD)
- Non-oscillating (2WD only)

#### Tire Options

- Rough terrain air-filled (standard)
- Rough terrain foam-filled
- High flotation air-filled
- Sealant treated air-filled
- Rough terrain non-marking (air or foam-filled)

### Options & Accessories

#### Productivity Options

- Platform swing gate
- Half mesh platform inserts with swing gate
- Platform top auxiliary rail
- Welder package\*
- Welder Ready package\*
- Air line to platform
- Biodegradable hydraulic oil
- Deluxe Hostile environment kit
- Aircraft protection package (6ft platform only)
- Thumb rocker steer
- Pipe cradle (pair)
- Alarm package
- Panel cradle package (requires tri-entry platform)
- Lockable platform control box covers
- Tow package
- Work light package
- Operator Protective Structure
- Operator Protective Alarm

#### Power Options

- Engine gauge package (standard on T4f engines)
- AC generator packages (110V/60Hz 220V/50Hz, 3000W)
- Cold Weather Packages
- Diesel scrubber/spark arrestor (catalytic muffler) (not available on T4f engines)
- LPG tank 33.5 lbs (15.19 kg) capacity



\* Available on select models  
\*\* Not available on CE machines

### Genie United States

18340 NE 76th Street  
P.O. Box 97030  
Redmond, Washington 98073-9730  
Telephone +1 (425) 881-1800  
Toll Free in USA/Canada +1 (800)-536-1800  
Fax +1 (425) 883-3475

### Distributed By:

Effective Date: February, 2015. Product specifications and prices are subject to change without notice or obligation. The photographs and/or drawings in this document are for illustrative purposes only. Refer to the appropriate Operator's Manual for instructions on the proper use of this equipment. Failure to follow the appropriate Operator's Manual when using our equipment or to otherwise act irresponsibly may result in serious injury or death. The only warranty applicable to our equipment is the standard written warranty applicable to the particular product and sale and we make no other warranty, express or implied. Products and services listed may be trademarks, service marks or trade names of Terex Corporation and/or their subsidiaries in the USA and many other countries. Genie is a registered trademark of Terex South Dakota, Inc. © 2015 Terex Corporation.