

30 G G/B C D E-7 D C Dsus/B TO CODA

MELT THE SIN OF SADNESS...DRIVE THE DARK OF DOUBT AWAY...

34 C 7

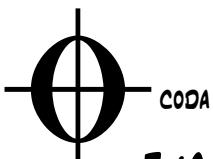
GIVER OF IMMORTAL GLADNESS...FILL US WITH THE LIGHT OF DAY!!!

41 D 4

45 E

49 D.S.AL CODA

THOU OUR FATHER, CHRIST OUR BROTHER
MELT THE CLOUDS OF SIN AND SADNESS
EVER SINGING MARCH WE ON-WARD!!!!



53 F/A OPEN VAMP E-11 F/A E-11 OPEN

ON CUE

$B-7$ $CMAJ7$ $A/C\#$ $C-9$ $D7sus D/E$ $D7/F\#$
 ALL WHO LIVE IN LOVE ARE THINE

CHOIR/SING

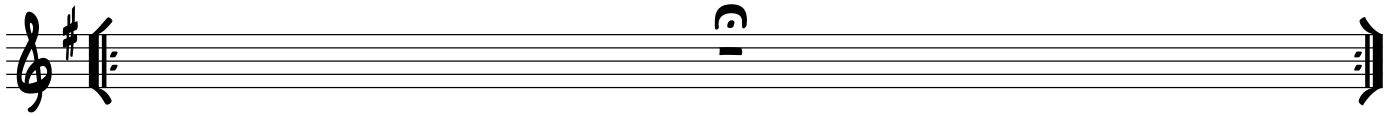
G G/D D/C G/B D/A G G/D D
 1) JOY-FUL, JOY-FUL, WE A-DORE THEE, GOD OF GLO-RY, LORD OF LOVE;
 2) ALL THY WORKS WITH JOY SUR-ROUND THEE, EARTH AND HEAVEN RE-FLECT THY RAYS,
 3) THOU ART GIV-ING AND FOR-GIV-ING, EV-ER BLESS-ING, EV-ER BLEST,

G C/G $G7$ $C(SUS4)$ $C6$ G/D $D7$ G/D $D7$ G
 HEARTS UN-FOLD LIKE FLOWERS BE-FORE THEE, PRAIS-ING THEE, THEIR SUN A-BOVE.
 STARS AND AN-GELS SING A-ROUND THEE, CEN-TER OF UN-BRO-KEN PRAISE.
 WELL-SPRING OF THE JOY OF LIV-ING, O-CEAN DEPTH OF HAP-PY REST!

D G/D $D7$ G/D $D7$ $B/D\#$ $B7$ Em $A7$ D G
 MELT THE CLOUDS OF SIN AND SAD-NESS; DRIVE THE DARK OF DOUBT A-WAY; GIV-FIELD AND FOR-EST, VALE AND MOUN-TAIN, BLOOMING MEA-DOW, FLASH-ING SEA, CHANT THOU OUR FA-THER CHRIST OUR BRO-THER; ALL WHO LIVE IN LOVE ARE THINE; TEACH-

$G7$ $C(SUS4)$ G/C $C6$ G/D $D7$ G/D $D7$ G
 ER OF IM-MOR-TAL GLAD-NESS, FILL US WITH THE LIGHT OF DAY.
 ING BIRD AND FLOW-ING FOUN-TAIN, CALL US TO RE-JOICE IN THEE.
 US HOW TO LOVE EACH O-THER, LIFT US TO THE JOY DI-VINE.

OPEN SOLO PIANO SOLO AFTER CHORAL HYMN OF JOYFUL/JOYFUL



"TEACH US HOW TO LOVE EACH OTHER.....LIFT US TO THE JOY DIVINE!!!

