

**CPR
LEASIDE
STATION**

C. P. R. Leaside Station Opening

The official opening of the C.P.R. new station at Leaside, Ont., a town adjoining Toronto on the northeast, was mentioned in our December issue, page 678, where it was noted that this station is one of several of very modern design which the C.P.R. has built or is building. The two accompanying illustrations show scenes at the station opening. The two-column illustration records the hoisting of the Union Jack on the station flagpole by two members of the 82nd Troop of boy scouts; the flag was hoisted to the accompaniment of the strains of the National Anthem. In the other illustration, N. R. Crump, General Manager, C.P.R. Eastern Lines, at the left, is shown presenting to Mayor H. H. Talbot, of Leaside, at the right, a colored, framed photograph of Mount Rundle, near Banff, Alta., this fine picture having been presented to Mayor Talbot as a souvenir of the occasion.

The formal opening of the station was attended by over one hundred industrialists of Leaside, together with members of the town council, civic officials, and C.P.R. officials. The general contractor for the construction of the station, Robert Teagle, was introduced by P. T. Cole of the C.P.R. Department

of Public Relations, following which Mr. Teagle handed the key to the station main door to Mr. Crump. He, in turn, presented it to Mayor Talbot, who opened the station door to the applause

Mr. Crump
Presents Mayor
Talbot with
framed, colored
photograph.
George Miller,
C.P.R. Ontario
District En-
gineer, appears
in center.



of the assembled guests. An inspection of the station building followed, after which the guests went aboard a special train of C.P.R. latest equipment, where a buffet luncheon was served.

East
Pass
Eff.
know
operat
Canad
ing. 1

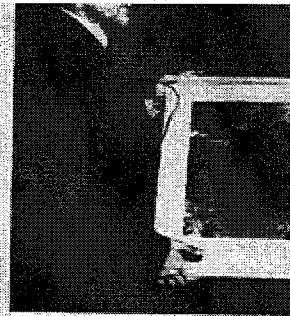
York,
rer/out
way.
Wash
the t
route.
nounc
ecutiv
that
more

January 1947

on the station flagpole by two members of the 82nd Troop of boy scouts; the flag was hoisted to the accompaniment of the strains of the National Anthem. In the other illustration, N. R. Crump, General Manager, C.P.R. Eastern Lines, at the left, is shown presenting to Mayor H. H. Talbot, of Leaside, at the right, a colored, framed photograph of Mount Rundle, near Banff, Alta., this fine picture having been presented to Mayor Talbot as a souvenir of the occasion.

The formal opening of the station was attended by over one hundred industrialists of Leaside, together with members of the town council, civic officials, and C.P.R. officials. The general contractor for the construction of the station, Robert Teagie, was introduced by P. T. Cole of the C.P.R. Department

Presents Mayor Talbot with framed, colored photograph. George Miller, C.P.R. Ontario District Engineer, appears in center.



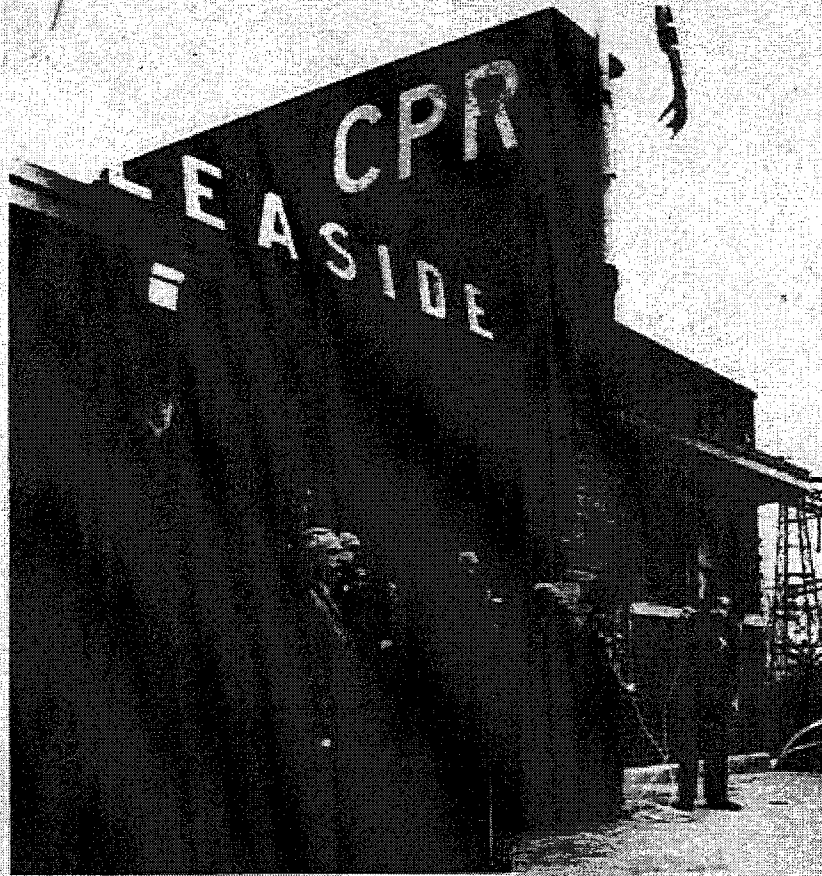
of the assembled guests. An inspection of the station building followed, after which the guests went aboard a special train of C.P.R. latest equipment, where a buffet luncheon was served.

York, W rerouted way. T Washing the two route th nounced ecutive V that the more eff railway. United S stated th establish St. John through way.

The in operating schedule leaves 3 of 9.25 a at 8.40 p Montreal a.m. inst local tra provide t Johns at Johns at day, and at 7 a.m p.m. dail baggage from all St. Alba

C.P.R. At a n Ry. Co. ember 4 preferen respect t This div 1, 1947, 3 p.m. a

Great Great way ope the first with \$2 1945.



At the Opening of the Canadian Pacific New Station at Leaside, Ont. While the National Anthem was being sung at the function, attended by over 125 Leaside industrialists, town officials and council members, and C.P.R. officials, the Union Jack was hoisted by two boy scouts of the 82nd Troop.

CANADIAN TRANSPORTATION, JANUARY, 1947

January 1947