

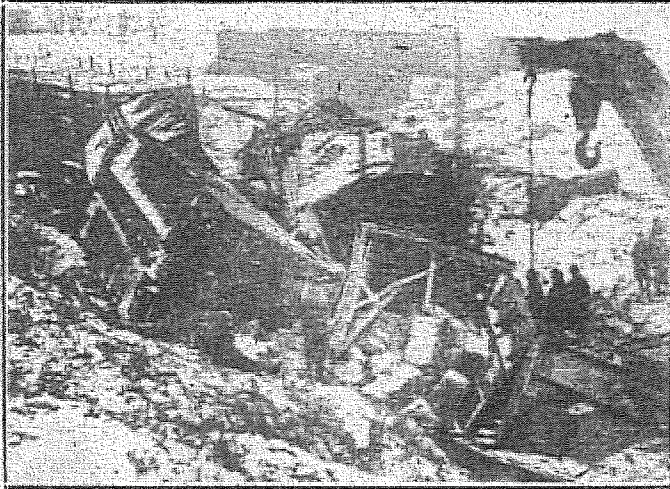
CNR-GTR

TODMORDEN

MARCH 3, 1926.

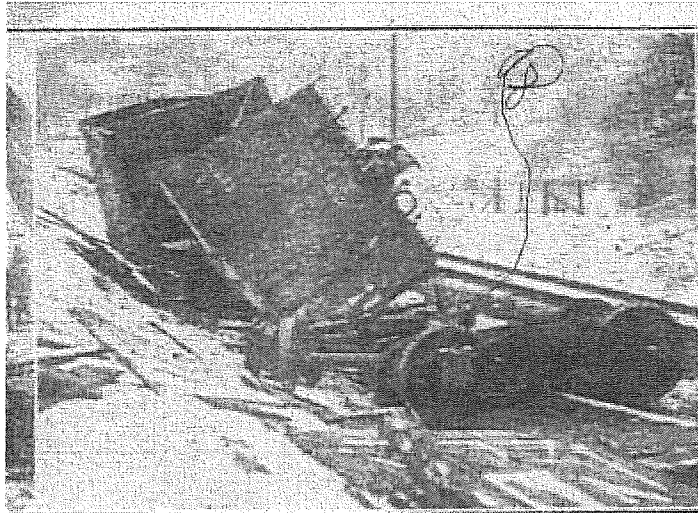


FREIGHT CARS TELESCOPE AS TRAIN COLLIDES



Head-on collision between two C.M. & St. P. freight trains in a narrow cut near the line for four hours. Both trains, it is said, were traveling 40 m.p.h. One engine and several freight cars were crushed and the scene as the wrecking crews were clearing the line and loading the debris.

MARCH 3  
1926  
Tadmorden -2



The Toronto police at the scene, which shows a severe wreck. The truck was overturned and lying on its side, with the front end crushed. The driver was killed. The photograph shows the damage to the freight car, which was torn open by the force of the collision.

MARCH 3 1926

Todmorden-3