

C.N.R.

BOMMANVILLE

APRIL 8, 1929.

the search continued.

Engineer Killed.

Derailement near Bowmanville of the Canadian National's crack passenger train No. 20, bound from Toronto to Montreal, cost the life of the engineer last night. First reports said that a second life may have been lost in the wreck. A washout, the result of the heavy storms yesterday and last night, caused the wreck, which occurred about a mile west of Bowmanville.

Storm in Bruce.

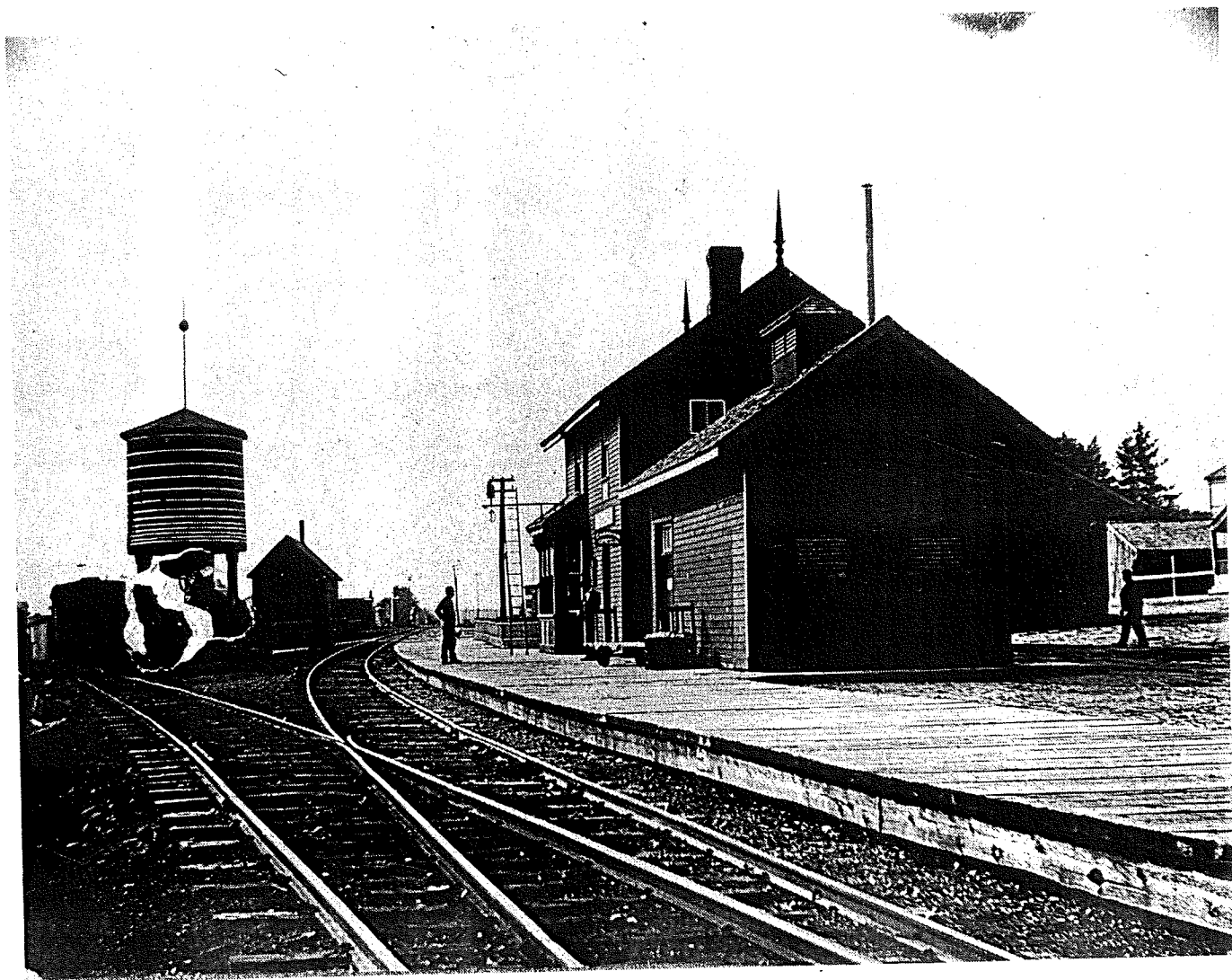
April 8 1929

Bowmanville

C.N.R.
WHITBY AND
PORT PERRY
RAILWAY.

MAY 4, 1929.

WHITBY AND PORT
PERRY RAILWAY.



Port Perry's station was moved across the street to become a flower shop.

May, April 13, was swept away.

Trains Diverted.

Early in the morning the bridge crossing the Rideau River ten miles west of Chertwood, on the Canadian Pacific Railway, was undermined by the rising floodwaters. Late in the night the trains proceeded over it slowly, but owing to the flood conditions they were diverted over the Canadian National Railway line a short distance to the north. One mile east of Chertwood flood damage to the Dixie bridge compelled highway officials to divert traffic to adjacent roadways. Owing to the damage, Montreal trains were several hours late in reaching Toronto.

Inspector Fred Lucas of the Provincial Department of Highways informed The Globe last night that Government engineers were of the opinion the temporary bridge at Summersville could be replaced by Monday afternoon. In the meantime "backbone" traffic has been diverted from the Dundas Highway south on Brown's Line to the Toronto-Hamilton Highway, west to the Third Line, and north again to the Dundas Highway. "Backbone" traffic has followed the same detour, which is accompanied entirely of paved roadway.

According to Inspector Lucas, engineers who constructed the first temporary bridge about the wrecked structure did not foresee the exceptional weather conditions which resulted in its being carried away. It is stated the new bridge will be erected several feet above the level of the old. Traffic was held at the time the former temporary bridge was washed away, and all motor cars were immediately diverted to the Brown's Line detour. Unusually heavy traffic on the Toronto-Hamilton Highway through Chertville resulted from the washout of the bridge.

—Nassau.

MAY 4
1929

CPR
Cherrywood