

8761

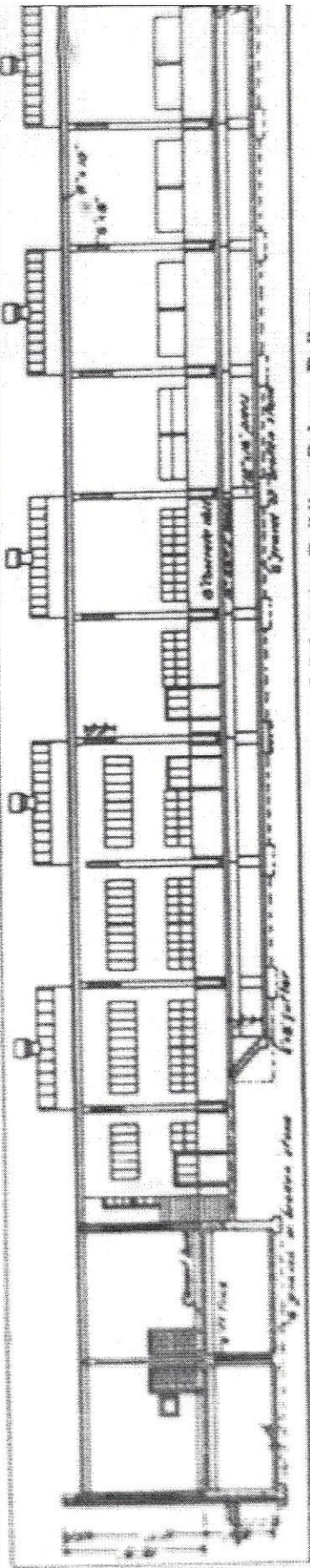
September, 1928

Oshawa Railway Car House, Shop and Substation.

The marked growth in the industrial activity of Oshawa, Ont., has made it necessary to increase the facilities of the Oshawa Ry., a Canadian National Ry. subsidiary, which serves the entire city for both l.c.l. and carload freight and local

Figure 1 shows the plans of the proposed building with various facilities indicated. Starting from the entrance on the north end of the building, the timekeeper's and storekeeper's offices will be to the right and the crew's room to the left. The two

tive body from its trucks. The main repair track will be track, but without hoist. Ext the pits for the two tracks will right across, so that easy access had from track to track. The



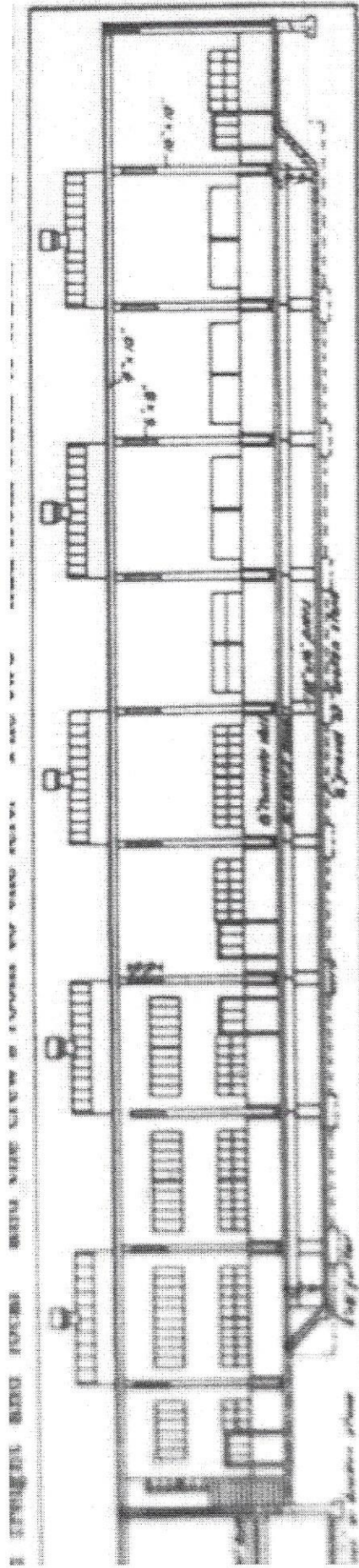
Longitudinal Section, Car House, Stores and Substation Building, Oshawa Railway.

switching. To keep abreast of this growing traffic the Oshawa Ry. has made substantial additions to its yard facilities, locomotives and equipment recently, with

corners will be occupied by the substation on the northeast corner and the storeroom on the northwest. Additional storage room for heavy material will be provided

from the machine shop will washing and cleaning. At on will be a complete car washing with receivers and drainage to washing water. The fourth t

8761-b



Longitudinal Section, Car House, Store and Substation Building, Oshawa Railway.

corners will be occupied by the substation from the machine shop will be used for
 on the northeast corner and the storeroom washing and cleaning. At one end there
 will be a complete car washing equipment

9-1928