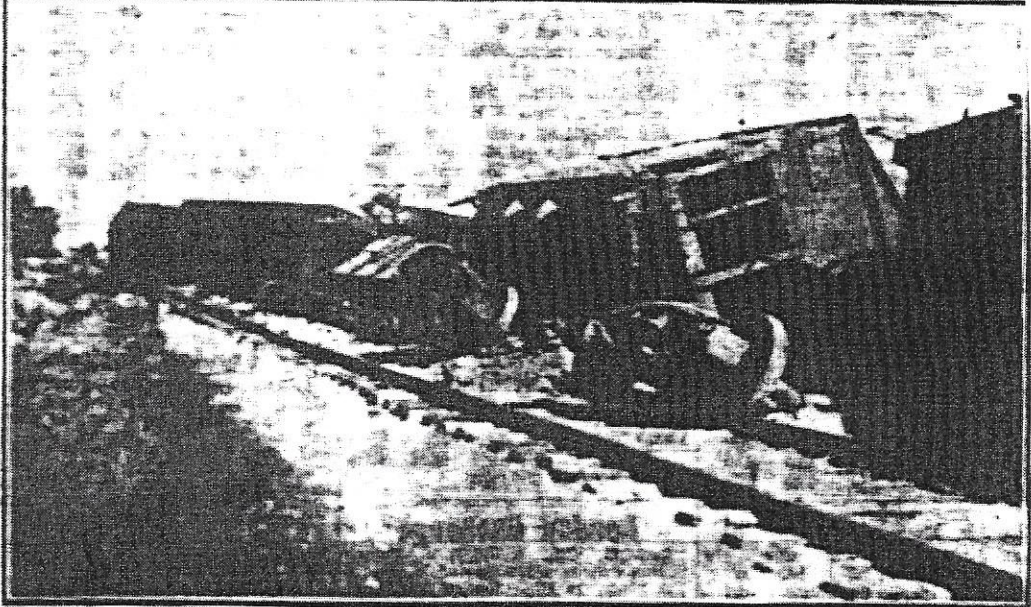
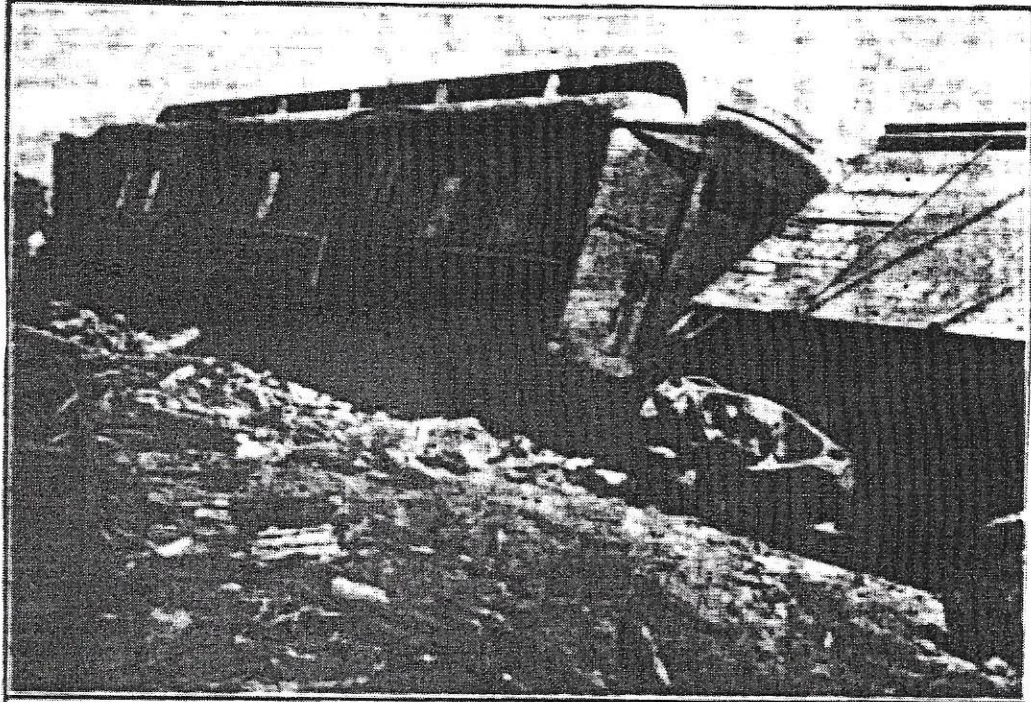


C.N.R. TRAIN DERAILED AT HAGERSVILLE



Shortly before 11 o'clock this morning a C.N. train which leaves Hamilton at 9.15 a.m. each week-day for Port Rowan, was derailed one mile north of Hagersville, and five passengers and a crew of four were considerably shaken up. The track was ripped up for more than 100 yards, and, while the engine remained on the tracks, two coal cars, a box car and baggage car slipped into the deep ditch beside the line. The above photos, taken by the Spectator staff cameraman shortly after the accident, shows, in the upper picture, the demolished track with baggage car leaning at a crazy angle, part of the overturned box car is in the foreground. Below, the wheels of the coal cars ripped from the body, the passenger car is on the extreme end of the train in an upright position.

October 4
1937