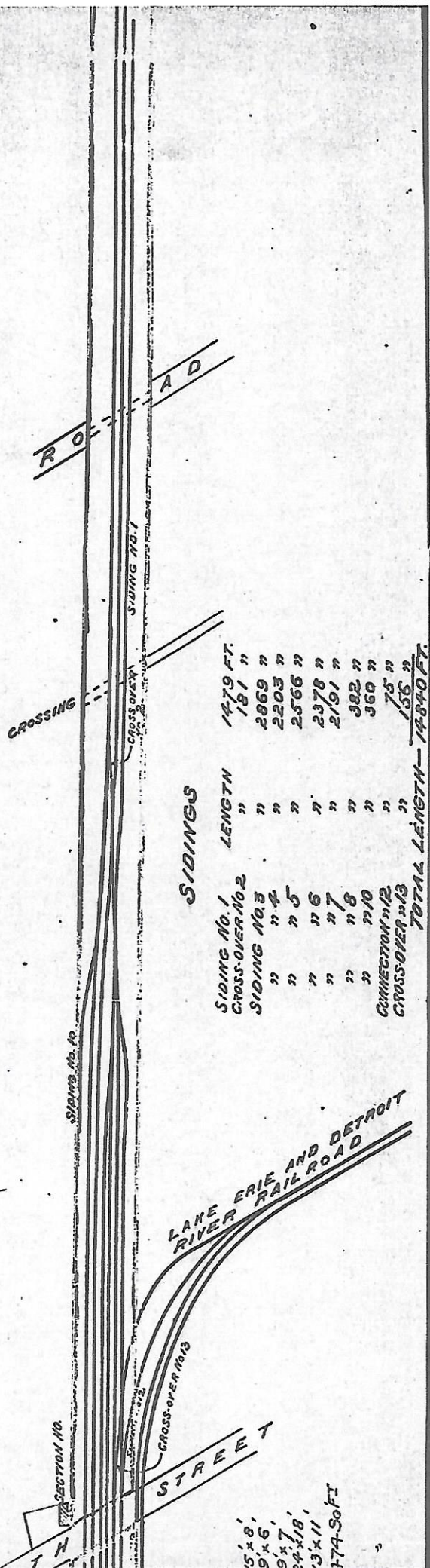


GRAND TRUNK RY. STATION YARD  
 WALKERVILLE STATION YARD  
 SCALE 200 FT.=1 INCH

GRAND TRUNK RY. PROPERTY  
 WITHIN THE LINES BORDERED GREEN



SIDINGS	LENGTH
SIDING No. 1	1479 FT.
CROSS-OVER No. 2	181 "
SIDING No. 3	2869 "
" " 4	2203 "
" " 5	2566 "
" " 6	2378 "
" " 7	2191 "
" " 8	382 "
" " 9	360 "
CONNECTION No. 12	75 "
CROSS-OVER No. 13	158 "
<b>TOTAL LENGTH</b>	<b>14840 FT.</b>

5'x8'  
 9'x6'  
 9'x7'  
 24'x18'  
 13'x11'  
 774-50 FT