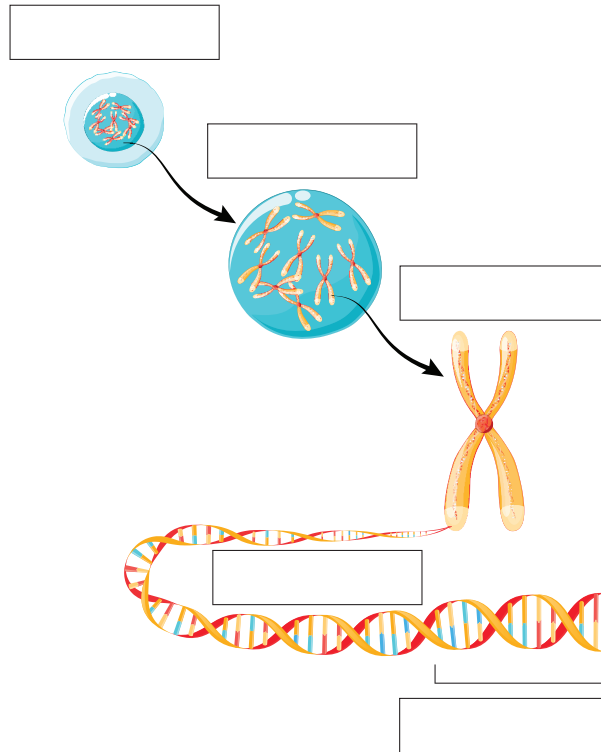


SCIENCE

Genes and Traits Assignment

Use your knowledge of genes and traits to answer the following questions.





1. On the diagram below, label the cell, DNA, chromosome, nucleus, and gene in the blank boxes next to each part of the image.



2. Answer each of the following questions in a complete sentence.

- a. How are proteins important for life?
- b. How are genes and proteins related?
- c. How are genes and DNA related?
- d. From where did your genes originate?
- e. How are genes “stored” inside the cell?

3. Which traits did you inherit from each parent? For each trait below, decide if you inherited it from your mom, dad, or a combination of both. Then explain your answer. If you aren't sure about traits from a parent, you may just include traits from one parent, or you can also interview a friend for this activity instead!

Trait	Mom, Dad, or Both?	Explanation
 eye color		
 hair color		
 height		
 shape of nose		