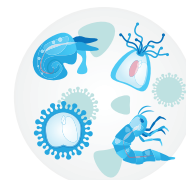
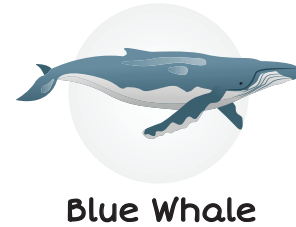


Food Web Assignment

Directions: Illustrate the flow of energy within the aquatic system below by completing each direction below.



- 1) Draw in eight arrows to show how the energy moves to create a food web. You may have to do a little research to help you make all the correct connections!
- 2) Where would phytoplankton and the Sun belong in this food web? Draw it in, as well as an arrow connecting each one accurately.
- 3) How would bacteria fit into this food web? Describe how you would draw it in.

- 4) Classify each of the seven organisms in the aquatic food web, as well as bacteria, as a producer, consumer, or decomposer by writing each into the correct category box.

Producer	Consumer	Decomposer

- 5) What would happen if krill were removed from the aquatic food web above? Write a response in complete sentences in the space below.

Include the answers to these questions in your response:

- What is a keystone species?
- Why are krill a keystone species in some ecosystems?
- How does the position of the krill in the aquatic food web above differ from the other organisms?
- What would happen if krill disappeared from this ecosystem?

