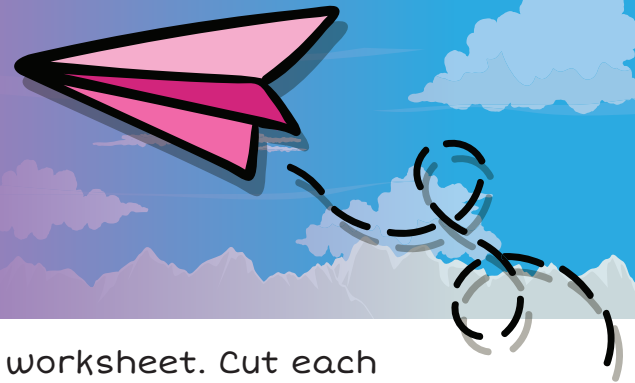


Name: _____ Date: _____

Break Apart Rectangles to Find Area



Cut out the shapes on the last page of the worksheet. Cut each shape into two smaller rectangles. Then find the area of each rectangle and the total area of the original shape.

Example

$5 \text{ units} \times 6 \text{ units} = 30 \text{ square units}$

$4 \text{ units} \times 2 \text{ units} = 8 \text{ square units}$

$30 \text{ units} + 8 \text{ units} = 38 \text{ square units}$

Total area: **38** square units

OR

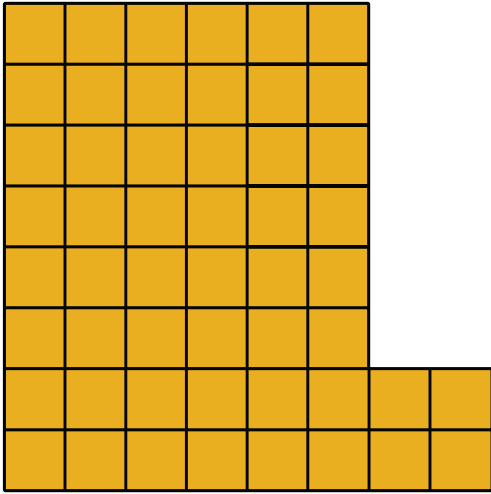
$4 \text{ units} \times 8 \text{ units} = 32 \text{ square units}$

$1 \text{ units} \times 6 \text{ units} = 6 \text{ square units}$

$32 \text{ units} + 6 \text{ units} = 38 \text{ square units}$

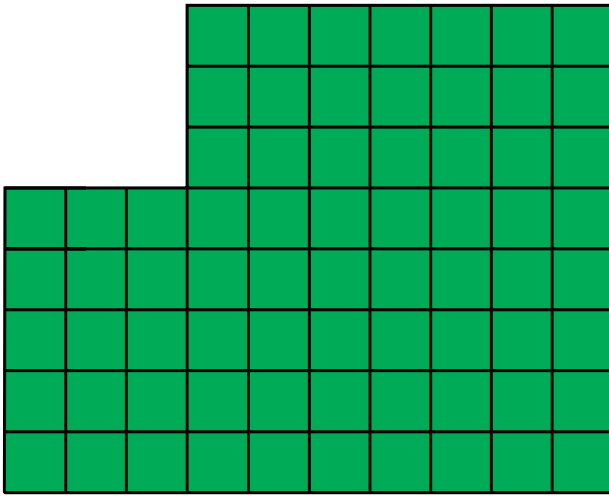
Total area: **38** square units

1.



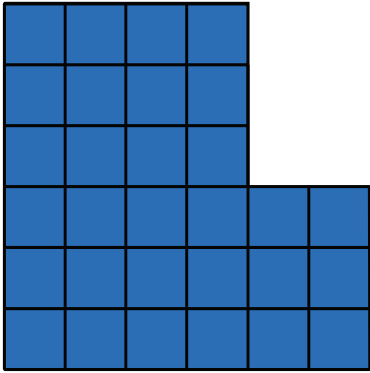
Total area: square units

2.



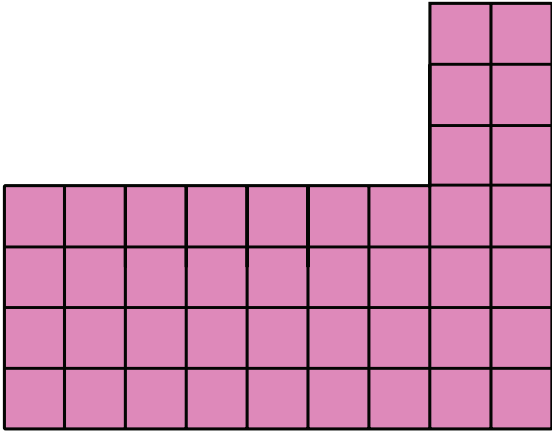
Total area: square units

3.



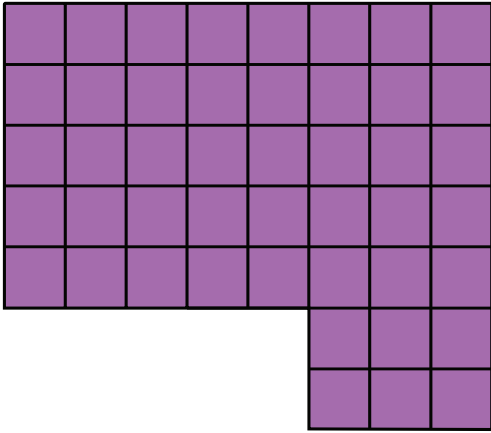
Total area: square units

4.



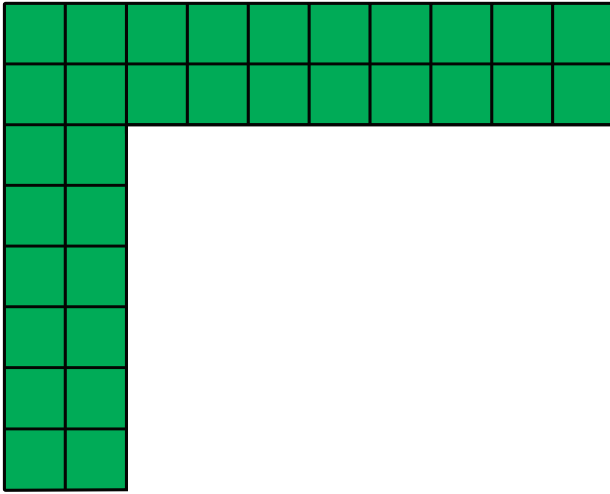
Total area: square units

5.



Total area: square units

6.



Total area: square units

