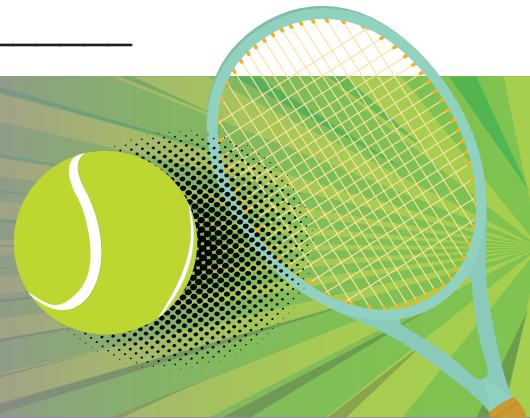


Name: \_\_\_\_\_ Date: \_\_\_\_\_

# Compare and Learn!


Measure to the nearest half inch to compare measurements.




Look at the line or item in each box below. Use your ruler to measure each item to the nearest half inch. Write the measurement in the box. Then, circle the item that has the greater measurement. Look for the letter next to each problem. Write that letter in the box above the greater measurement you found. Then, you will see a fact about tennis!

**Example:**

**L**




$5\frac{1}{2}$   
inches




$4\frac{1}{2}$   
inches

Write the letter "L" in the box that has a  $5\frac{1}{2}$  under it

**I. O**

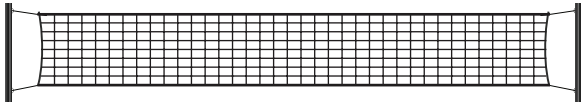


inches

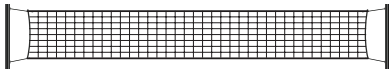


inches

2. E



inches



inches

3. V



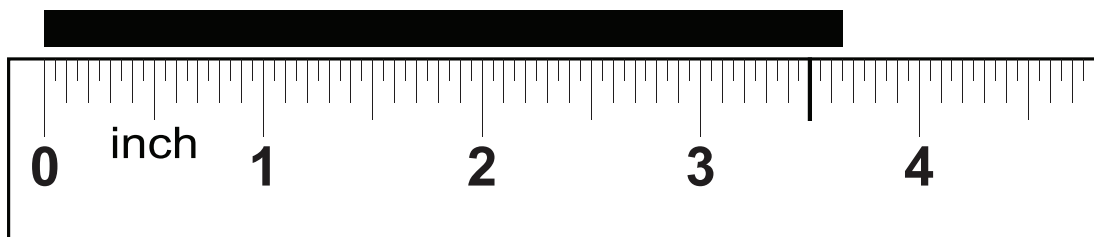
inches



inches

#### 4. Challenge

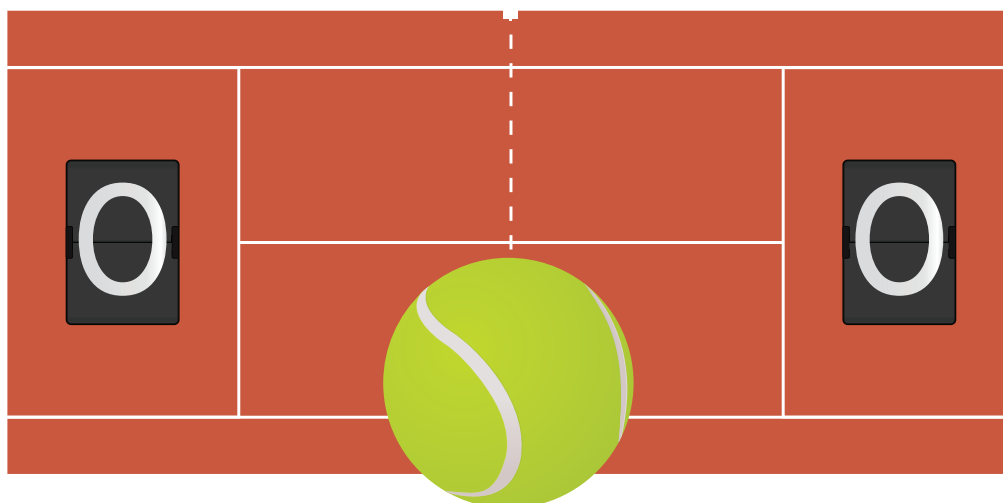
If we measure this line to the nearest inch, it is about 4 inches long. If we measure to the nearest half inch, it is about  $3\frac{1}{2}$  inches long. Which measurement is closer to the real measurement? Write the answer to the question below, and use the ruler to help explain your answer.



inches

### Tennis Fact

When no one scores in tennis, instead of “zero” people use the word...



$5\frac{1}{2}$

$4\frac{1}{2}$

6

3