



CONFERENCE  
CAROLINAS<sup>TM</sup>

BRAND STANDARDS GUIDE

# TABLE OF CONTENTS

<i>TABLE OF CONTENTS</i>	<i>2</i>
<i>BRAND STANDARDS EXPECTATIONS</i>	<i>3</i>
<i>COLOR PALETTE</i>	<i>4</i>
<i>THE LOGOS</i>	<i>5</i>
<i>MINIMUM SIZING</i>	<i>12</i>
<i>LOGO RESTRICTIONS</i>	<i>13</i>
<i>FACILITIES</i>	<i>15</i>
<i>UNIFORMS</i>	<i>17</i>
<i>ADDENDUM</i>	<i>28</i>

## BRAND STANDARDS EXPECTATIONS

*EACH INSTITUTION IS EXPECTED  
TO COMPLY WITH THE STANDARDS  
ESTABLISHED WITHIN THE PAGES OF  
THE CONFERENCE CAROLINAS BRAND  
STANDARDS STYLE GUIDE.*

# COLOR PALETTE

TO MAINTAIN CONSISTENCY, THE  
CONFERENCE CAROLINAS' MARKS MUST BE  
SET WITHIN THE FEATURED COLORS.  
ADDITIONAL MARKETING MATERIALS MUST  
ALSO FALL WITHIN THIS PALETTE.

DUE TO THE UNPREDICTABLE CALIBRATION OF  
DESKTOP SCREENS AND PRINTERS, PLEASE  
REFER TO THE PANTONE COLORS FOR AN  
ACCURATE COLOR REPRODUCTION.



CMKY: 100 85 5 36

RGB: 0 32 91

HEX: 00205B



CMKY: 0 31 98 0

RGB: 255 184 28

HEX: FFB81C

# THE LOGOS

CONFERENCE CAROLINAS' BRAND  
IDENTITY IS COMPRISED OF FOUR  
VARIATIONS OF CLOSELY RELATED LOGOS.



WORDMARK



STACKED



HORIZONTAL



MONOGRAM

# PRIMARY WORDMARKS

THE PRIMARY WORDMARK SHOULD BE USED IN FULL COLOR WHEN POSSIBLE, BUT IS AVAILABLE FOR USE IN THE ONE-COLOR VARIATIONS LISTED TO THE RIGHT.

THE COLOR WHITE IS AN APPROVED VARIATION OF THIS MARK.



# PRIMARY STACKED MARKS

THE PRIMARY STACKED MARK SHOULD BE USED IN FULL COLOR WHEN POSSIBLE, BUT IS AVAILABLE FOR USE IN THE ONE-COLOR VARIATIONS LISTED TO THE RIGHT.

THE COLOR WHITE IS AN APPROVED VARIATION OF THIS MARK.



# PRIMARY HORIZONTAL

*THE HORIZONTAL MARK SHOULD BE USED IN IT'S FULL-COLOR VERSION WHEN POSSSSIBLE, BUT IS AVAILABLE FOR USE IN ONE-COLOR VARIATIONS LISTED TO THE RIGHT.*

*THE COLOR WHITE IS AN APPROVED VARIATION OF THIS MARK.*



CONFERENCE CAROLINAS



CONFERENCE CAROLINAS



CONFERENCE CAROLINAS

# MONOGRAM

THE MONOGRAM MARK SHOULD BE USED IN ITS FULL-COLOR VERSION WHEN POSSIBLE, BUT IS AVAILABLE FOR USE IN ONE-COLOR VARIATIONS LISTED TO THE RIGHT.

THE COLOR WHITE IS AN APPROVED VARIATION OF THIS MARK.



## TAGLINE MARKS

THE TAGLINE MARK SHOULD BE USED IN ITS FULL-COLOR VERSION WHEN POSSIBLE, BUT IS AVAILABLE FOR USE IN ONE-COLOR VARIATIONS LISTED TO THE RIGHT.

THE COLOR WHITE IS AN APPROVED VARIATION OF THIS MARK.

The full-color tagline mark features the text "CHAMPIONS IN BODY, MIND & SOUL™" in a bold, sans-serif font. The word "CHAMPIONS" is on the top line, "IN BODY," is on the middle line, and "MIND & SOUL™" is on the bottom line. A stylized orange and yellow flame graphic is positioned above the "H" in "CHAMPIONS".

CHAMPIONS  
IN BODY,  
MIND & SOUL™

The white tagline mark is identical in layout and font to the full-color version, but the text is white. The flame graphic above "CHAMPIONS" is also white.

CHAMPIONS  
IN BODY,  
MIND & SOUL™

The black tagline mark is identical in layout and font to the full-color version, but the text is black. The flame graphic above "CHAMPIONS" is also black.

CHAMPIONS  
IN BODY,  
MIND & SOUL™

## LOGO CLEAR SPACE

THE MINIMUM AMOUNT OF CLEAR SPACE THAT MUST SURROUND THE LOGO AT ALL TIMES IS SHOWN TO THE RIGHT. NO OTHER GRAPHIC ELEMENTS SHOULD INTRUDE INTO THE CLEAR SPACE RATIO WHICH IS TO ALWAYS REMAIN AS SHOWN.

THE HEIGHT OF THE WHITE SPACE INBETWEEN THE "C" ON THE LOGO SHOULD BE EQUIVILANT TO THE AMOUNT OF CLEAR SPACE SURROUNDING THE LOGO IN ALL USES.

IN INSTANCES WHERE POSSIBLE, PROVIDE MORE CLEAR SPACE AROUND THE LOGO.



# MINIMUM SIZING

CONFERENCE CAROLINAS’ LOGOS HAVE NO MAXIMUM SIZE RESTRICTIONS, HOWEVER THERE ARE RESTRICTIONS ON THE MINIMUM SIZE.

## PRINT AND EMBROIDERY

IN THE CASE OF THE PRIMARY WORDMARK LOGO AND THE PRIMARY HORIZONTAL MARK LOGO, THEY ARE TO BE NO SMALLER THAN 3.5” WIDE. IN THE CASE OF THE MONOGRAM MARKS AND THE PRIMARY STACKED MARKS THEY ARE TO BE NO SMALLER THAN 1” AND 2.5” RESPECTFULLY. THE MONOGRAMMED LOGO SHOULD APPEAR NO SMALLER THAN 1” WIDE.

## DIGITAL

IN THE CASE OF DIGITAL APPLICATIONS THE CONFERENCE LOGOS SHOULD APPEAR NO SMALLER THAN .5” WIDE OR .5”HIGH DEPENDING ON THE LOGO.



# LOGO RESTRICTIONS



DO NOT USE RETIRED LOGOS



NEVER SKEW THE LOGO



NEVER REVERSE COLOR PLACEMENT



NEVER ALTER LOGO COLORS



NEVER ENCLOSE LOGO IN ANOTHER SHAPE



NEVER ALTER LOGO DIMENSIONS

# CHAMPIONSHIP LOGO(S)

CONFERENCE CAROLINAS IS UTILIZING CHAMPIONSHIP LOGO(S) FOR ALL SPORTS STARTING WITH THE 2021-22 ACADEMIC YEAR. THE LOGO(S) ARE SPORT-SPECIFIC.



# DIGITAL NETWORK

THE CURRENT CONFERENCE CAROLINAS LOGO(S) ARE MANDATORY ON EACH HOME DIGITAL NETWORK BROADCAST. THE LOGO(S) CAN BE USED IN THE SCOREBUG, AS A WATERMARK OR AS A POP OUT. THE LOGO(S) CAN BE EITHER THE FULL COLOR CONFERENCE CAROLINAS MONOGRAM LOGO OR THE REVERSE COLOR MONOGRAM LOGO.

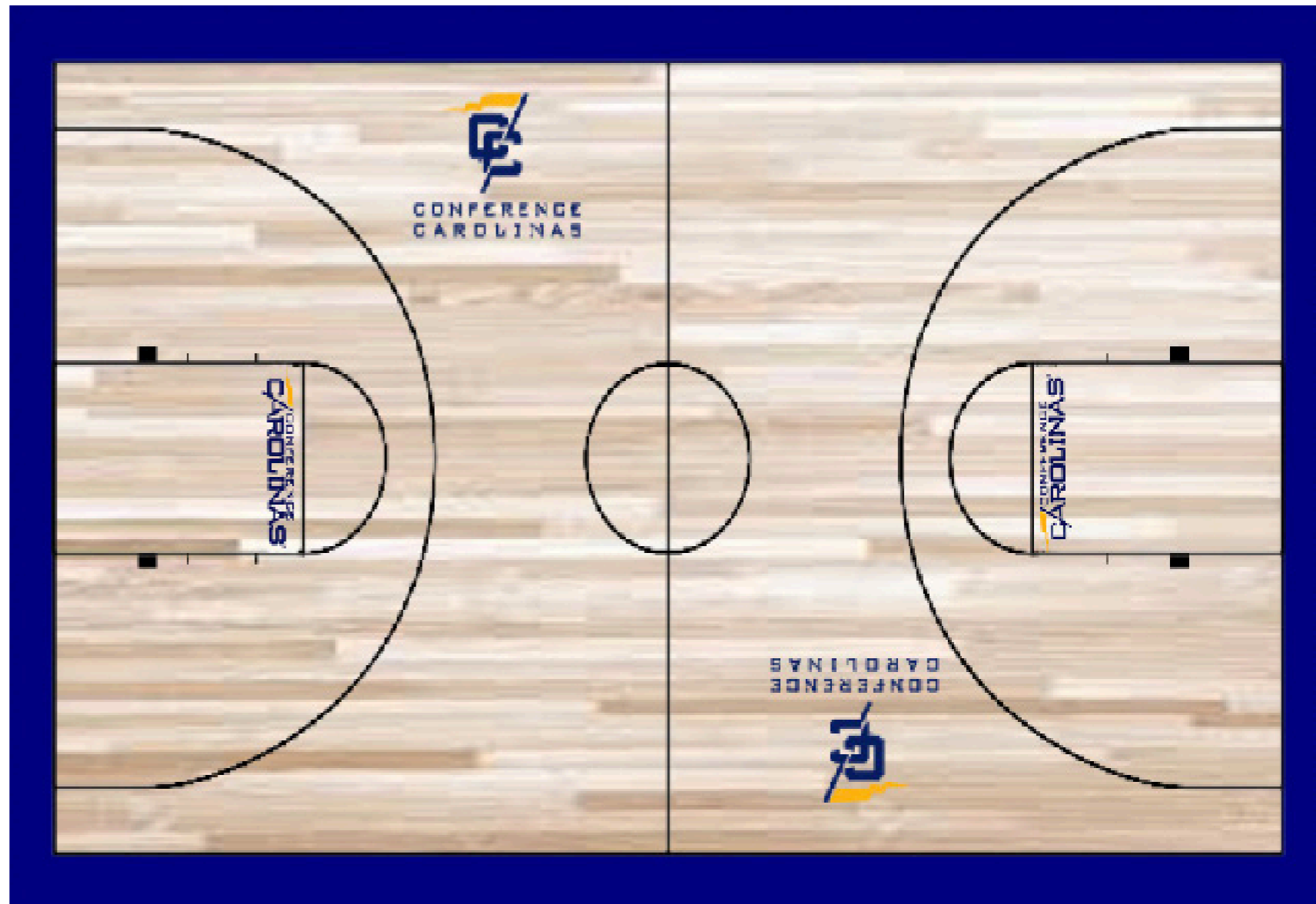
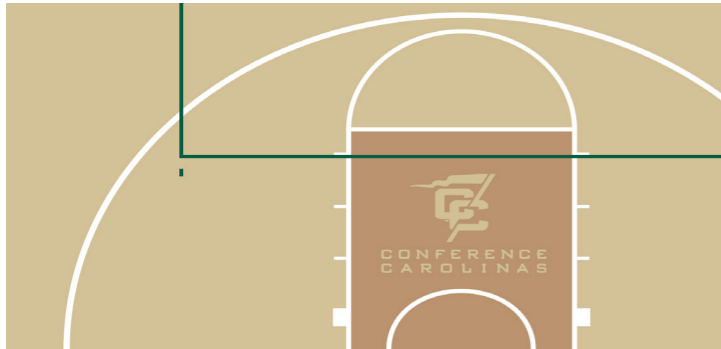


# FACILITIES

## INDOOR COURTS

ALL INDOOR COURTS SHOULD HAVE THE CONFERENCE CAROLINAS LOGO ON THE FLOOR IN ONE OF THE TWO SPACES DESIGNATED IN THE DIAGRAM. EITHER THE STACKED LOGO OR WATERMARK LOGO MAY BE USED. THE LOGO(S) CAN BE IN FULL COLOR WITH GOLD AND NAVY, NAVY OR BLACK PER THE BRANDING GUIDELINES. IN ADDITION, IT IS APPROPRIATE FOR THE LOGO(S) TO BE IN A DARKER, BUT NEUTRAL, STAIN COLOR OR BE IN "REVERSE" AND MATCH THE GENERAL STAIN OF THE REST OF THE FLOOR (EXAMPLE BELOW).

IF A MEMBER INSTITUTION IS UNABLE TO PLACE THE LOGO ON COURT AT A PARTICULAR VENUE, THE INSTITUTION MUST SUBMIT A PROPOSAL TO THE AD'S ADMIN & MARKETING COMMITTEE ON AN ALTERNATE LOCATION FOR THE LOGO IN A VERY PROMINENT AREA.

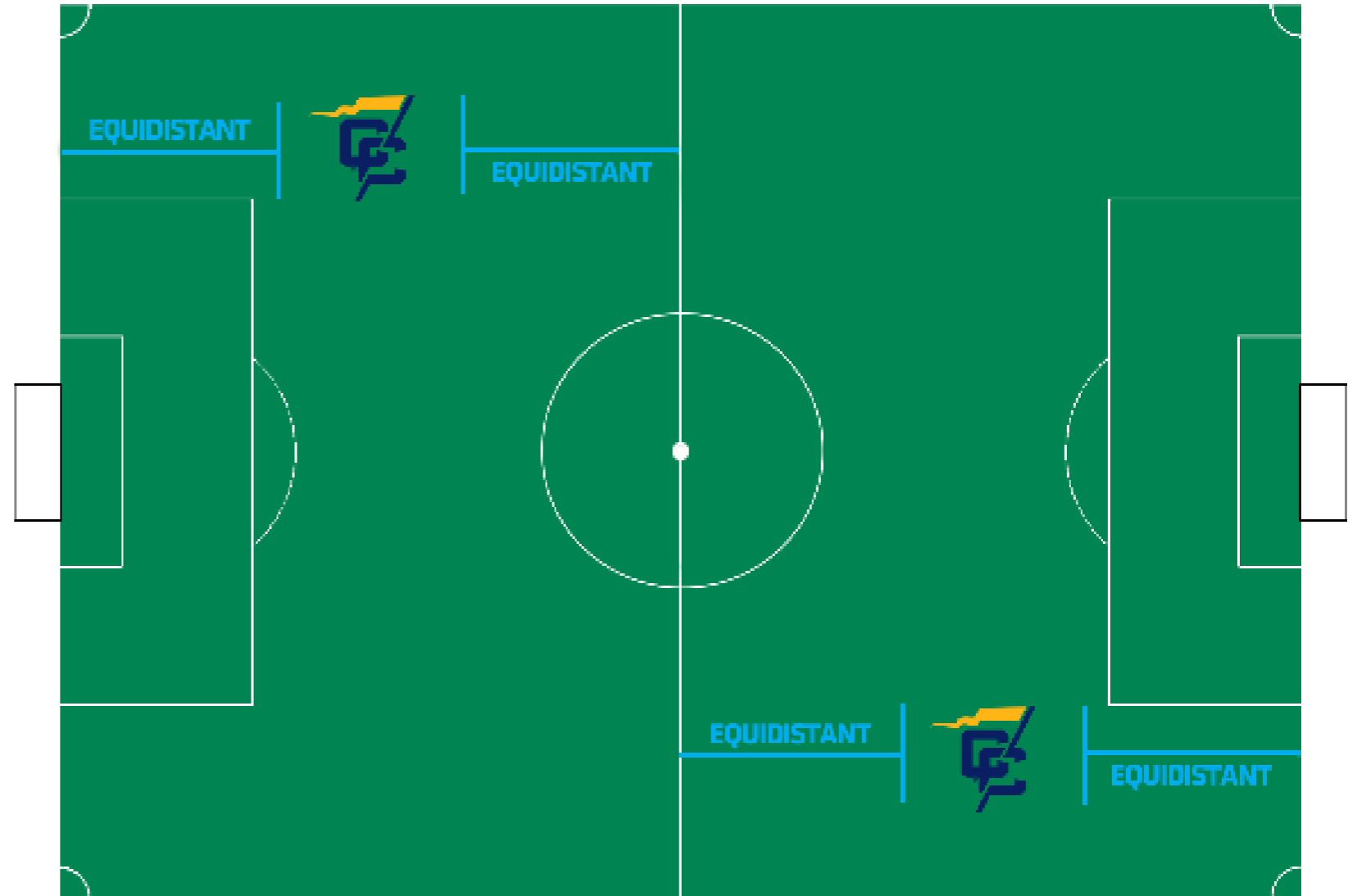


# FACILITIES

## MULTIPURPOSE OUTDOOR VENUES

THE STACKED, HORIZONTAL OR MONOGRAM LOGO SOCCER FIELD PLACEMENT SHOULD BE A MINIMUM OF 12-FEET AND EQUIDISTANT FROM THE MIDFIELD AND GOAL LINES. THE TOP OF THE LOGO (LEFT SIDE OF FIELD) SHOULD ALIGN WITH TOP EDGE OF THE 18-YARD BOX. THE TOP OF THE LOGO (RIGHT SIDE OF FIELD) SHOULD ALIGN WITH THE BOTTOM EDGE OF THE 18-YARD BOX.

IF A MEMBER INSTITUTION IS UNABLE TO UTILIZE THE STENCIL AT A PARTICULAR VENUE, THE INSTITUTION MUST SUBMIT A PROPOSAL TO THE AD'S ADMIN & MARKETING COMMITTEE ON AN ALTERNATE LOCATION FOR THE LOGO IN A VERY PROMINENT AREA.



# FACILITIES

## BASEBALL/SOFTBALL

*THE STACKED, HORIZONTAL, OR MONOGRAM LOGO SHOULD APPEAR SOMEWHERE ON THE FIELD. SEEN TO THE RIGHT, FACING EACH RESPECTIVE DUGOUT.*

*IF A MEMBER INSTITUTION IS UNABLE TO UTILIZE THE STENCIL AT A PARTICULAR VENUE, THE INSTITUTION MUST SUBMIT A PROPOSAL TO THE AD'S ADMIN & MARKETING COMMITTEE ON AN ALTERNATE LOCATION FOR THE LOGO IN A VERY PROMINENT AREA.*



# STENCILS

CONFERENCE CAROLINAS WILL UP FRONT PROVIDE ONE INTERLOCKING CC AND ONE CONFERENCE CAROLINAS STENCIL TO EACH MEMBER INSTITUTION ALONG WITH A PAINT STARTER PACK. ALL MEMBER INSTITUTIONS FROM THERE ARE THEN RESPONSIBLE FOR UPKEEP.

FIELDS SHOULD BE PAINTED ONE OF THE APPROVED COLOR SCHEMES (GOLD AND NAVY, NAVY/BLACK AND WHITE AND GOLD).

## IF DO NOT USE STENCILS

IF A MEMBER INSTITUTION IS UNABLE TO UTILIZE THE STENCIL AT A PARTICULAR VENUE, THE INSTITUTION MUST SUBMIT A PROPOSAL TO THE AD'S ADMIN & MARKETING COMMITTEE ON AN ALTERNATE LOCATION FOR THE LOGO IN A VERY PROMINENT AREA.



# UNIFORM

THE MONOGRAM MARK IS EXPECTED TO APPEAR ON ALL BASEBALL AND SOFTBALL UNIFORMS. THE APPROPRIATE PLACEMENT OF THE MONOGRAM MARK IS SHOWCASED ON THIS PAGE, AND THE ALTERNATE PLACEMENT IS REPRESENTED BY THE BOX. IN ADDITION, IF NECESSARY, THE JERSEY SLEEVE IS ACCEPTABLE.

## JERSEY AND HAT

THE PREFERRED PRESENTATION OF THE MONOGRAM MARK IS 2.5", POSITIONED ON THE FRONT CHEST OF THE JERSEY, OPPOSITE OF MANUFACTURER LOGO AND CENTERED BETWEEN THE COLLAR AND SLEEVE SEAM. IN ADDITION, PLEASE CONSIDER ADDING THE 2.5" MONOGRAM MARK ON THE HAT ON THE RIGHT PANEL.

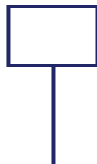
THE LOGO CAN ONLY APPEAR WHERE DESIGNATED.

# BASEBALL AND SOFTBALL

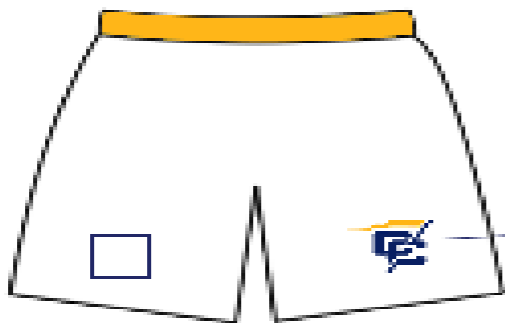


# UNIFORM

2.5" WIDE



DENOTES ALTERNATE PLACEMENT OF THE CC LOGO WHEN THERE IS A CONFLICT WITH THE RECOMMENDED



2.5" WIDE



# BASKETBALL

THE MONOGRAM MARK IS EXPECTED TO APPEAR ON ALL BASKETBALL UNIFORMS. THE APPROPRIATE PLACEMENT OF THE MONOGRAM MARK IS SHOWCASED ON THIS PAGE, AND THE ALTERNATE PLACEMENT IS REPRESENTED BY THE BOX. IN ADDITION, IF NECESSARY, THE JERSEY SLEEVE IS ACCEPTABLE.

## JERSEY AND SHORTS

THE PREFERRED PRESENTATION OF THE MONOGRAM MARK IS 2.5", POSITIONED ON THE FRONT LEFT CHEST OF THE JERSEY OPPOSITE OF MANUFACTURER LOGO AND CENTERED BETWEEN THE COLLAR AND SLEEVE SEAM. IN ADDITION, PLEASE CONSIDER ADDING THE 2.5" MONOGRAM MARK ON THE SHORTS ON THE FRONT PANEL OF THE LEFT LEG.

IF AN AMERICAN FLAG PATCH IS USED IT MUST, BY NCAA RULE, BE PLACED ON THE LEFT SHOULDER PANEL ABOVE THE MONOGRAM MARK.

THE LOGO CAN ONLY APPEAR WHERE DESIGNATED.

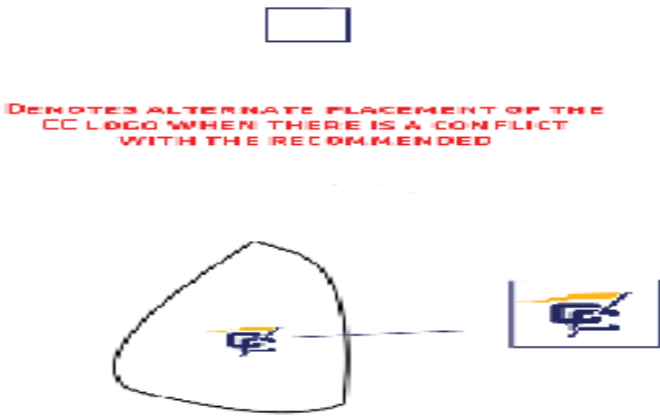
# UNIFORM

THE MONOGRAM MARK IS EXPECTED TO APPEAR ON ALL MEN'S AND WOMEN'S BOWLING UNIFORMS. THE APPROPRIATE PLACEMENT OF THE MONOGRAM MARK IS SHOWCASED ON THIS PAGE, AND THE ALTERNATE PLACEMENT IS REPRESENTED BY THE BOX. THE JERSEY SLEEVE IS ACCEPTABLE AS PRIMARY.

## BAG

IT IS ALSO ENCOURAGED TO INCLUDE THE MONOGRAM MARK ON BOWLING BAGS.

THE LOGO CAN ONLY APPEAR WHERE DESIGNATED.



# UNIFORM

THE MONOGRAM MARK IS EXPECTED TO APPEAR ON ALL CROSS COUNTRY AND TRACK AND FIELD UNIFORMS. THE APPROPRIATE PLACEMENT OF THE MONOGRAM MARK IS SHOWCASED ON THIS PAGE, AND THE ALTERNATE PLACEMENT IS REPRESENTED BY THE BOX. IN ADDITION, IF NECESSARY, THE JERSEY SLEEVE IS ACCEPTABLE.

## JERSEY AND SHORTS

THE PREFERRED PRESENTATION OF THE MONOGRAM MARK IS 2.5", POSITIONED ON FRONT CHEST OF THE JERSEY, OPPOSITE OF MANUFACTURER LOGO AND CENTERED BETWEEN THE COLLAR AND SLEEVE SEAM. IN ADDITION, PLEASE CONSIDER ADDING THE 2.5" MONOGRAM MARK ON THE SHORTS ON THE FRONT PANEL OF THE LEFT LEG.

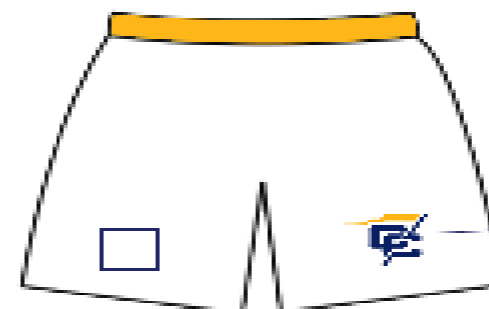
THE LOGO CAN ONLY APPEAR WHERE DESIGNATED.

## CROSS COUNTRY - TRACK

2.5" WIDE



DENOTES ALTERNATE PLACEMENT  
CC LOGO WHEN THERE IS A COI  
WITH THE RECOMMENDED



2.5" WIDE



# UNIFORM

## GOLF

THE MONOGRAM MARK IS EXPECTED TO APPEAR ON ALL GOLF POLOS. THE APPROPRIATE PLACEMENT OF THE MONOGRAM MARK IS SHOWCASED ON THIS PAGE, AND THE ALTERNATE PLACEMENT IS REPRESENTED BY THE BOX. IN ADDITION, IF NECESSARY, THE JERSEY SLEEVE IS ACCEPTABLE.

### POLO, HAT, AND VISOR

THE PREFERRED PRESENTATION OF THE MONOGRAM MARK IS 2.5", POSITIONED ON FRONT CHEST OF THE POLO, OPPOSITE OF MANUFACTURER LOGO AND CENTERED BETWEEN THE COLLAR AND SLEEVE SEAM. IN ADDITION, PLEASE CONSIDER ADDING THE 2.5" MONOGRAM MARK ON THE RIGHT PANEL OF THE HAT AND A SMALLER VERSION ON THE MONOGRAM MARK ON THE VISOR .

### BAG

IT IS ALSO ENCOURAGED TO INCLUDE THE MONOGRAM MARK ON GOLF BAGS. THE PREFERRED PRESENTATION OF THIS IS 5".

THE LOGO CAN ONLY APPEAR WHERE DESIGNATED.

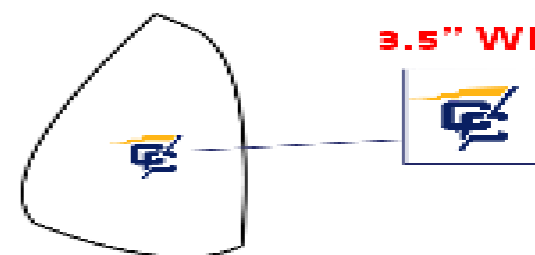
2.5" WIDE



DENOTES ALTERNATE PLACEMENT OF THE CC LOGO WHEN THERE IS A CONFLICT WITH THE RECOMMENDED

SIDE VIEW OF GOLF BAG

3.5" WIDE



2.5" WIDE



2.5" WIDE

# UNIFORM



# LACROSSE

THE MONOGRAM MARK IS EXPECTED TO APPEAR ON ALL LACROSSE UNIFORMS. THE APPROPRIATE PLACEMENT OF THE MONOGRAM MARK IS SHOWCASED ON THIS PAGE, AND THE ALTERNATE PLACEMENT IS REPRESENTED BY THE BOX. IN ADDITION, IF NECESSARY, THE JERSEY SLEEVE IS ACCEPTABLE.

## JERSEY, SHORTS, AND SKIRTS

THE PREFERRED PRESENTATION OF THE MONOGRAM MARK IS 2.5", POSITIONED ON FRONT CHEST OF THE JERSEY, OPPOSITE OF MANUFACTURER LOGO AND CENTERED BETWEEN THE COLLAR AND SLEEVE SEAM. IN ADDITION, PLEASE CONSIDER ADDING THE 2.5" MONOGRAM MARK ON THE SHORTS ON THE LEFT LEG OF THE SHORTS AND THE LEFT OF THE SKIRT.

THE LOGO CAN ONLY APPEAR WHERE DESIGNATED.

# UNIFORM

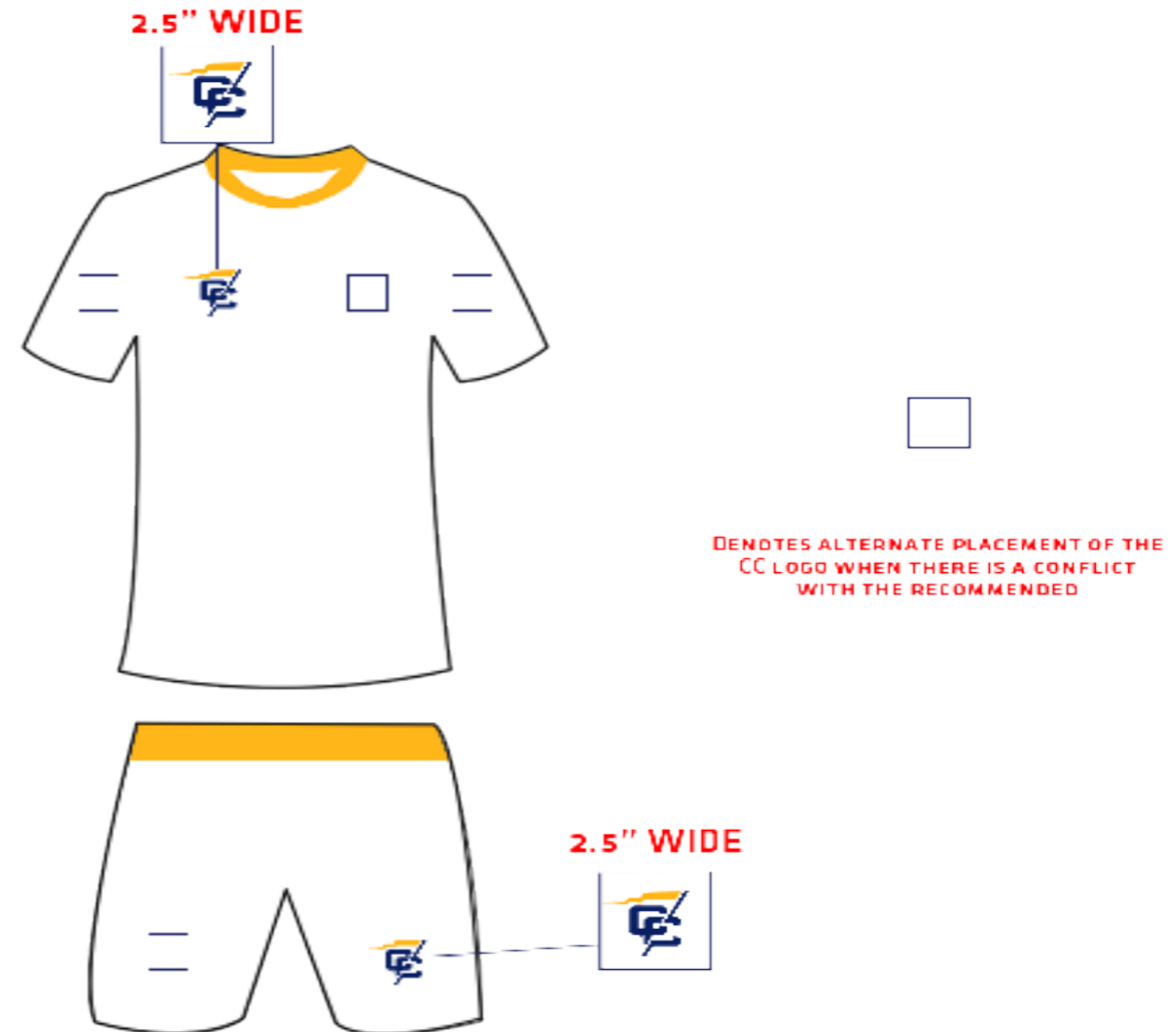
# SOCCER

THE MONOGRAM MARK IS EXPECTED TO APPEAR ON ALL SOCCER UNIFORMS. THE APPROPRIATE PLACEMENT OF THE MONOGRAM MARK IS SHOWCASED ON THIS PAGE, AND THE ALTERNATE PLACEMENT IS REPRESENTED BY THE BOX. IN ADDITION, IF NECESSARY, THE JERSEY SLEEVE IS ACCEPTABLE.

## JERSEY AND SHORTS

THE PREFERRED PRESENTATION OF THE MONOGRAM MARK IS 2.5", POSITIONED ON FRONT CHEST OF THE JERSEY, OPPOSITE OF MANUFACTURER LOGO AND CENTERED BETWEEN THE COLLAR AND SLEEVE SEAM. IN ADDITION, PLEASE CONSIDER ADDING THE 2.5" MONOGRAM MARK ON THE SHORTS ON THE FRONT PANEL OF THE LEFT LEG.

THE LOGO CAN ONLY APPEAR WHERE DESIGNATED.



# UNIFORM

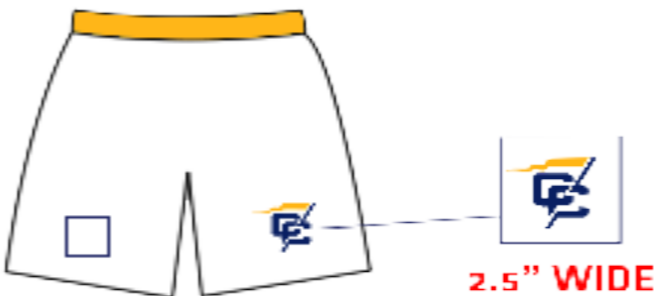
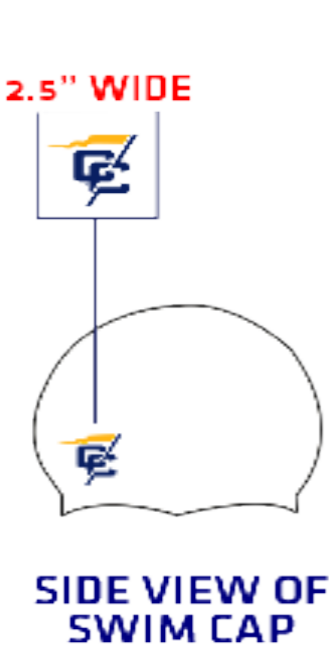
# SWIMMING AND DIVING

THE MONOGRAM MARK IS EXPECTED TO APPEAR ON ALL SWIMMING AND DIVING UNIFORMS. THE APPROPRIATE PLACEMENT OF THE MONOGRAM MARK IS SHOWCASED ON THIS PAGE, AND THE ALTERNATE PLACEMENT IS REPRESENTED BY THE BOX.

## CAP AND TRUNKS

THE PREFERRED PRESENTATION OF THE MONOGRAM MARK IS 2.5" WIDE, ON THE FRONT PANEL OF THE LEFT SIDE OF SWIMMER CAPS (AS WORN).

THE LOGO CAN ONLY APPEAR WHERE DESIGNATED.



# UNIFORM

THE MONOGRAM MARK IS EXPECTED TO APPEAR ON ALL TENNIS UNIFORMS. THE APPROPRIATE PLACEMENT OF THE MONOGRAM MARK IS SHOWCASED ON THIS PAGE, AND THE ALTERNATE PLACEMENT IS REPRESENTED BY THE BOX. IN ADDITION, IF NECESSARY, THE JERSEY SLEEVE IS ACCEPTABLE.

## SHIRTS, SHORTS, SKIRTS

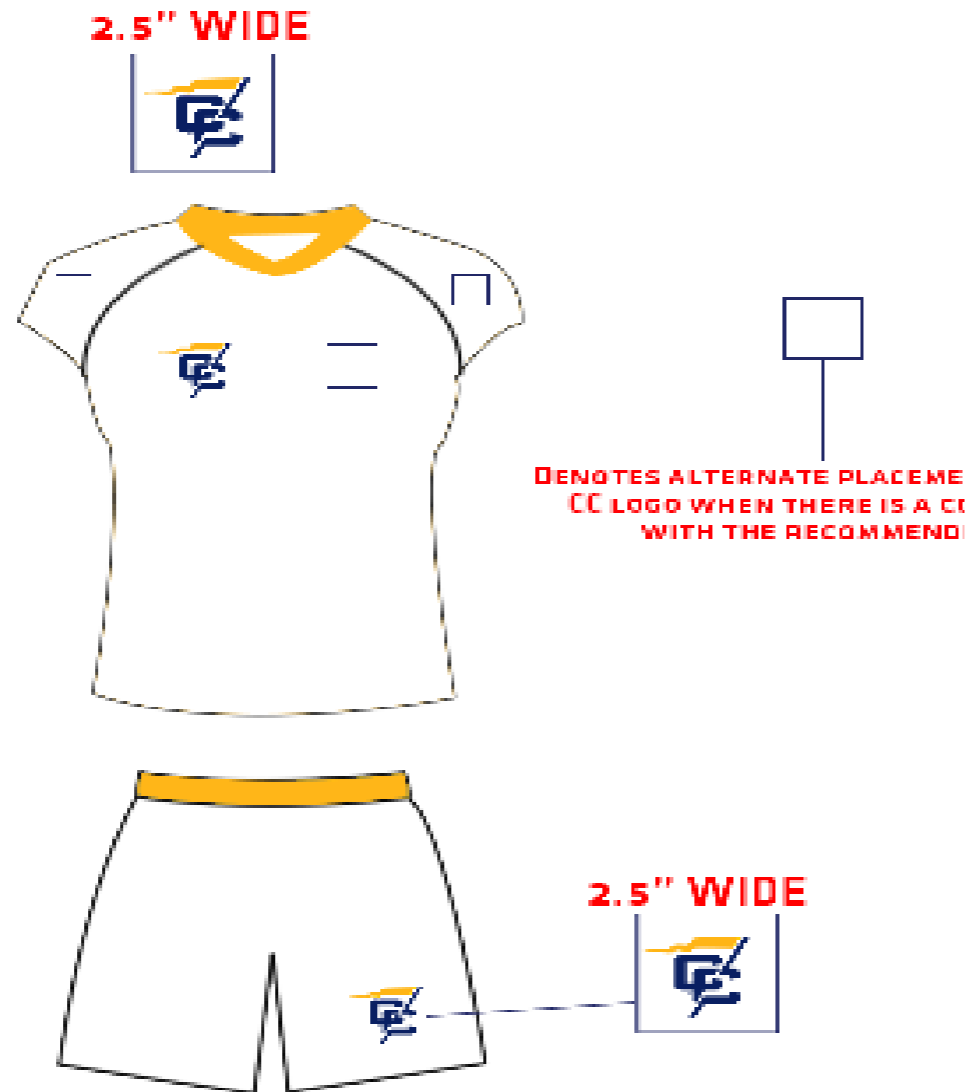
THE PREFERRED PRESENTATION OF THE MONOGRAM MARK IS 2.5", POSITIONED ON FRONT CHEST OF THE SHIRT, OPPOSITE OF MANUFACTURER LOGO AND CENTERED BETWEEN THE COLLAR AND SLEEVE SEAM. IN ADDITION, PLEASE CONSIDER ADDING THE 2.5" MONOGRAM MARK ON THE SHORTS ON THE FRONT PANEL OF THE LEFT LEG AND LEFT SIDE OF THE SKIRT.

THE LOGO CAN ONLY APPEAR WHERE DESIGNATED.

# TENNIS



# UNIFORM VOLLEYBALL AND ACROBATICS & TUMBLING



THE MONOGRAM MARK IS EXPECTED TO APPEAR ON ALL VOLLEYBALL UNIFORMS. THE APPROPRIATE PLACEMENT OF THE MONOGRAM MARK IS SHOWCASED ON THIS PAGE, AND THE ALTERNATE PLACEMENT IS REPRESENTED BY THE BOX. IN ADDITION, IF NECESSARY, THE JERSEY SLEEVE IS ACCEPTABLE.

## JERSEY AND SHORTS

THE PREFERRED PRESENTATION OF THE MONOGRAM MARK IS 2.5", POSITIONED ON FRONT CHEST OF THE JERSEY, OPPOSITE OF MANUFACTURER LOGO AND CENTERED BETWEEN THE COLLAR AND SLEEVE SEAM. IN ADDITION, PLEASE CONSIDER ADDING THE 2.5" MONOGRAM MARK ON THE SHORTS ON THE FRONT PANEL OF THE LEFT LEG.

THE LOGO CAN ONLY APPEAR WHERE DESIGNATED.

# UNIFORM

THE MONOGRAM MARK IS EXPECTED TO APPEAR ON ALL WRESTLING SINGLETS. THE APPROPRIATE PLACEMENT OF THE MONOGRAM MARK IS SHOWCASED ON THIS PAGE, AND THE ALTERNATE PLACEMENT IS REPRESENTED BY THE BOX. IN ADDITION, IF NECESSARY AND APPLICABLE, THE JERSEY SLEEVE IS ACCEPTABLE.

THE LOGO CAN ONLY APPEAR WHERE DESIGNATED.

# WRESTLING

2.5" WIDE



DENOTES ALTERNATE PLACEMENT OF THE CC LOGO WHEN THERE IS A CONFLICT WITH THE RECOMMENDED

# OFFICIAL FONT

THE CONFERENCE CAROLINAS OFFICIAL FONT IS AVAILABLE FOR USE FOR ALL MEMBER INSTITUTIONS. PLEASE CONTACT THE CONFERENCE OFFICE FOR FONT FILE.

IN ADDITION TO THE OFFICIAL FONT, CONFERENCE CAROLINAS ALSO UTILIZES STEILE FUTURA BQ AS ITS SECONDARY FONT.



# ADDENDUM - UPDATED ACTIVATION TIMELINE

## BY AUGUST 1, 2019

- REPLACEMENT ON ALL SCHOOL WEBSITES AND APPROPRIATE WEB PAGES
- REPLACEMENT IN ALL SCHOOL PUBLICATIONS (ADMISSIONS RECRUITING MATERIALS, ATHLETIC MEDIA GUIDES, SOUVENIR GAME PROGRAMS, ETC)
- REPLACEMENT ON ALL PRINTED OFFICE MATERIAL AND SUPPLIES (LETTERHEAD, BUSINESS CARDS, ETC)
- REPLACEMENT OF ALL GRAPHICS PACKAGES FOR LIVE STREAM BROADCASTS

## BY AUGUST 1, 2020

- REPLACEMENT ON ALL TEAM/CAMPUS VEHICLES
- REPLACEMENT ON ALL CAMPUS BANNERS AND SIGNS, BOTH INDOOR AND OUTDOOR, BOTH ATHLETIC VENUES AND GENERAL CAMPUS BUILDINGS

## BY AUGUST 1, 2022

- LOGO PLACEMENT ON THE BASKETBALL/VOLLEYBALL COURT
- LOGO PLACEMENT ON ALL UNIFORMS, HELMETS, APPAREL, AND TEAM BAGS
- REPLACEMENT ON ALL PRINTED OFFICE MATERIAL AND SUPPLIES (LETTERHEAD, BUSINESS CARDS, ETC)
- REPLACEMENT OF ALL MEDIA BACKDROPS
- STENCILS OR APPROVED ALTERNATIVES BY THE AD'S ADMIN & MARKETING COMMITTEE MUST BE EASILY SEEN AT OUTDOOR FACILITIES
- NO VISIBLE USAGE OF OLD CONFERENCE CAROLINAS LOGO. THE LONE EXCEPTION ARE EXISTING CHAMPIONSHIPS BANNERS THAT WERE WON WHILE AN OLD LOGO WAS IN USE