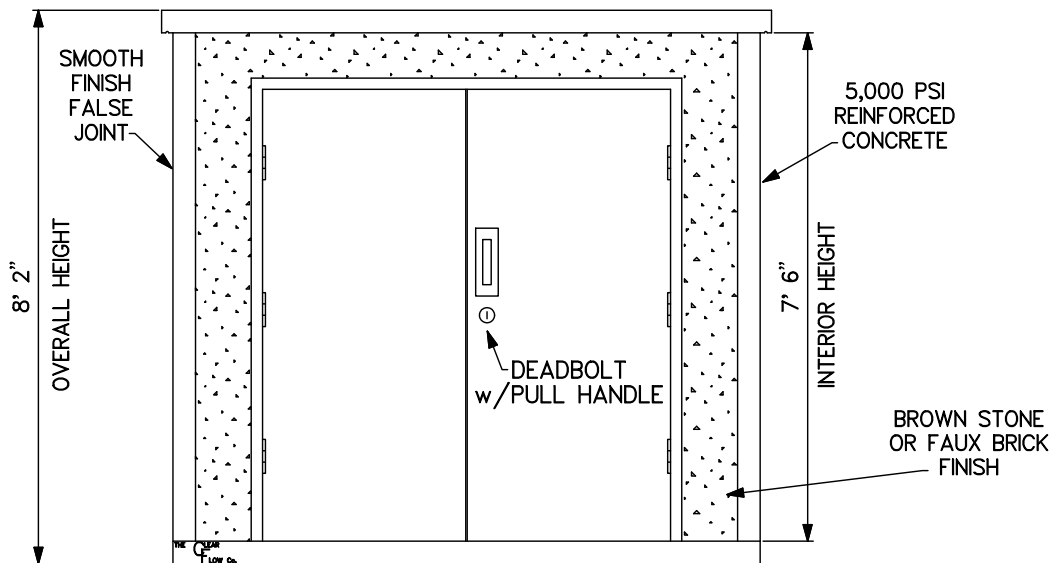


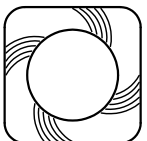
PLAN VIEW



FRONT VIEW

NOTES:

1. CLEAR FLOW BUILDING DELIVERED AND SET ON CONTRACTOR PREPARED BASE



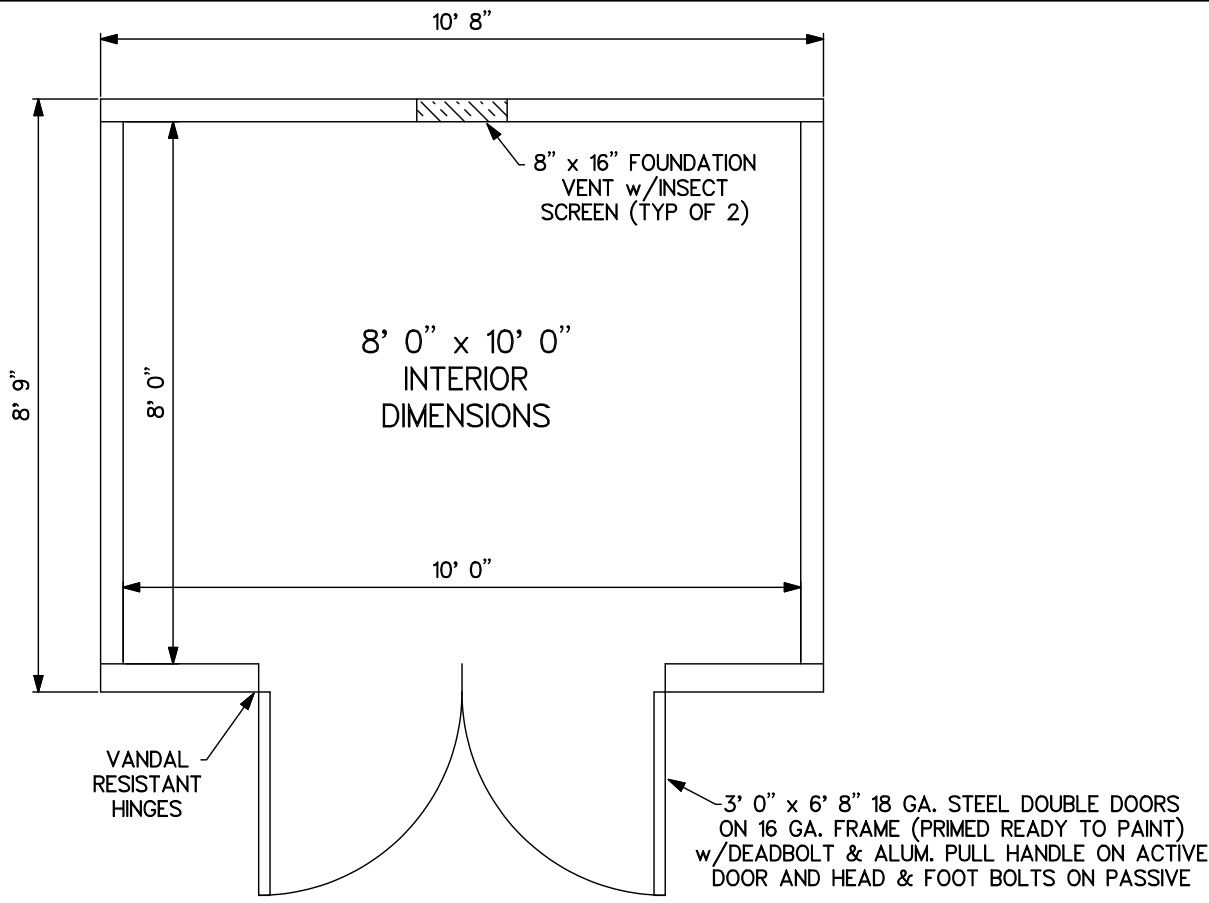
CLEAR FLOW
BY CP & P
 CONCRETE PIPE & PRECAST, LLC
 (800) 648 - 2678

SCALE: NONE

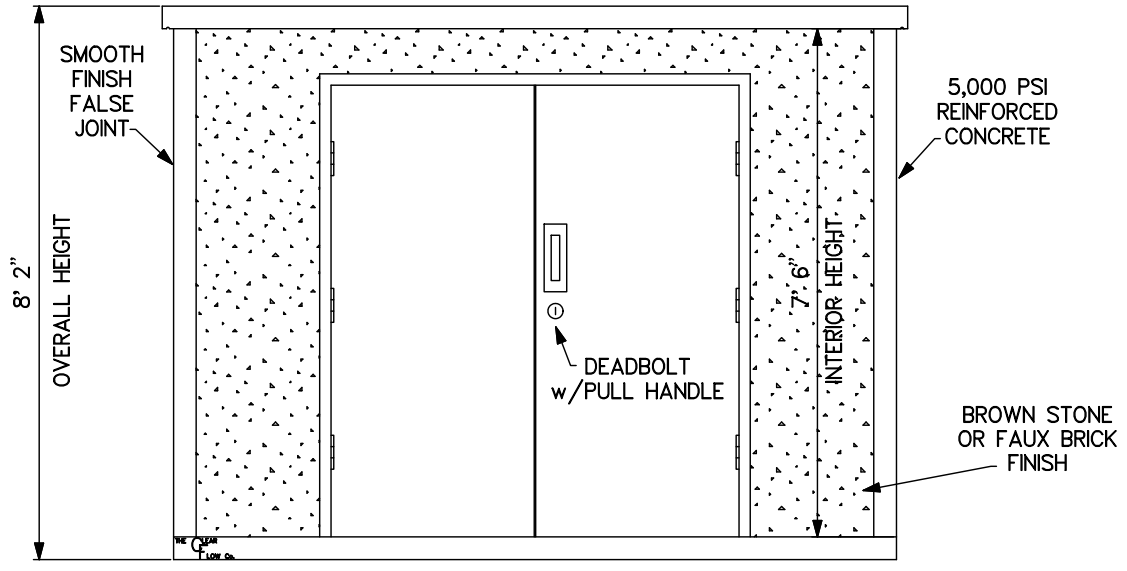
DATE: 2000

DWG: 8x8 BUILDING

8' x 8'
STONEWALL BUILDING

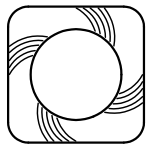


PLAN VIEW



FRONT VIEW

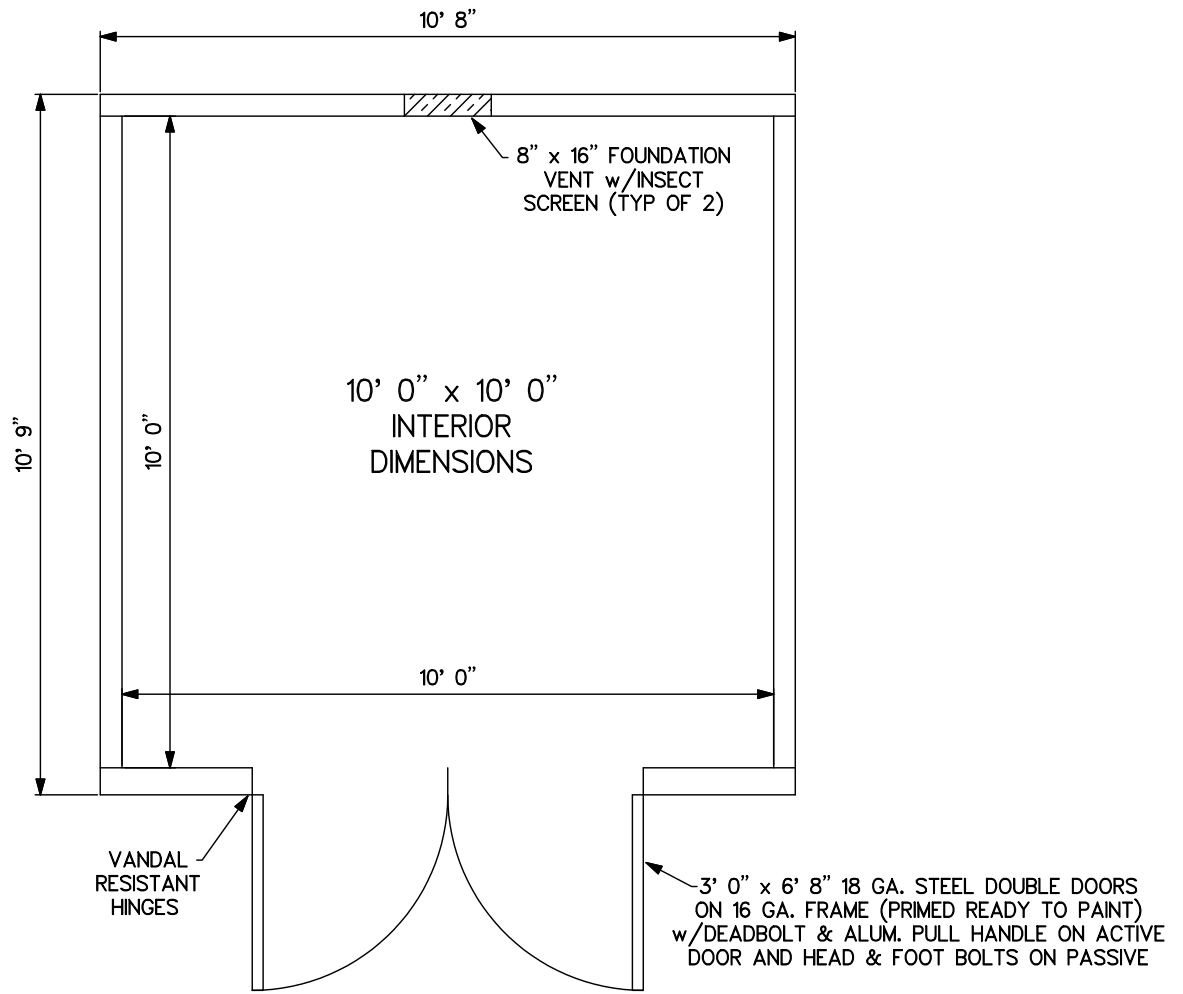
NOTES:
1. CLEAR FLOW BUILDING DELIVERED AND SET ON CONTRACTOR PREPARED BASE



CLEAR FLOW
BY CP & P
CONCRETE PIPE & PRECAST, LLC
(800) 648 - 2678

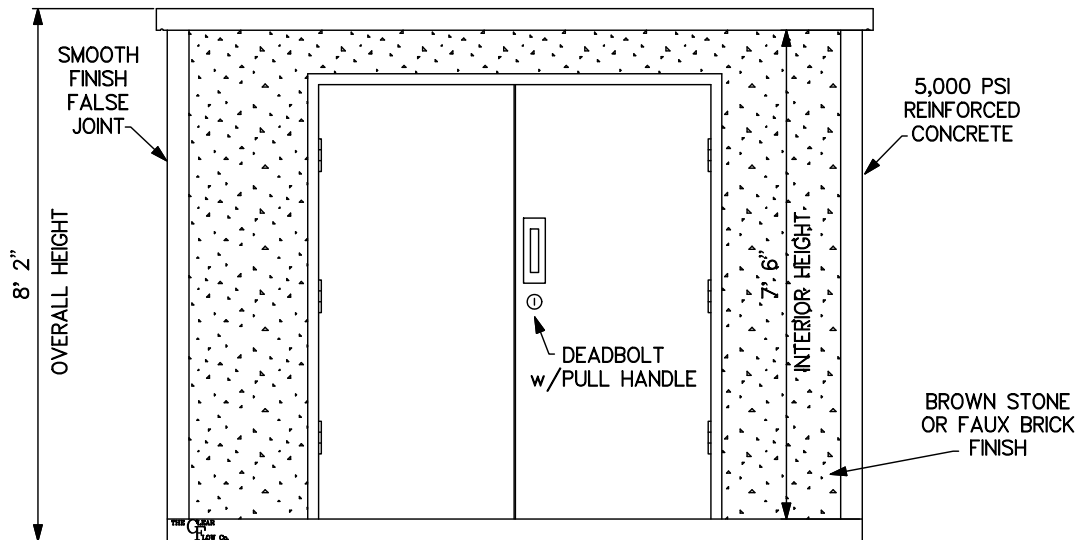
SCALE: NONE DATE: 2000 DWG: 8x10-BUILDING

8' x 10'
STONEWALL BUILDING



PLAN VIEW

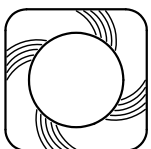
TOWARD REAR
TOP IS SLOPED
FOR RUNOFF



FRONT VIEW

NOTES:

1. CLEAR FLOW BUILDING DELIVERED AND SET ON CONTRACTOR PREPARED GRAVEL BASE



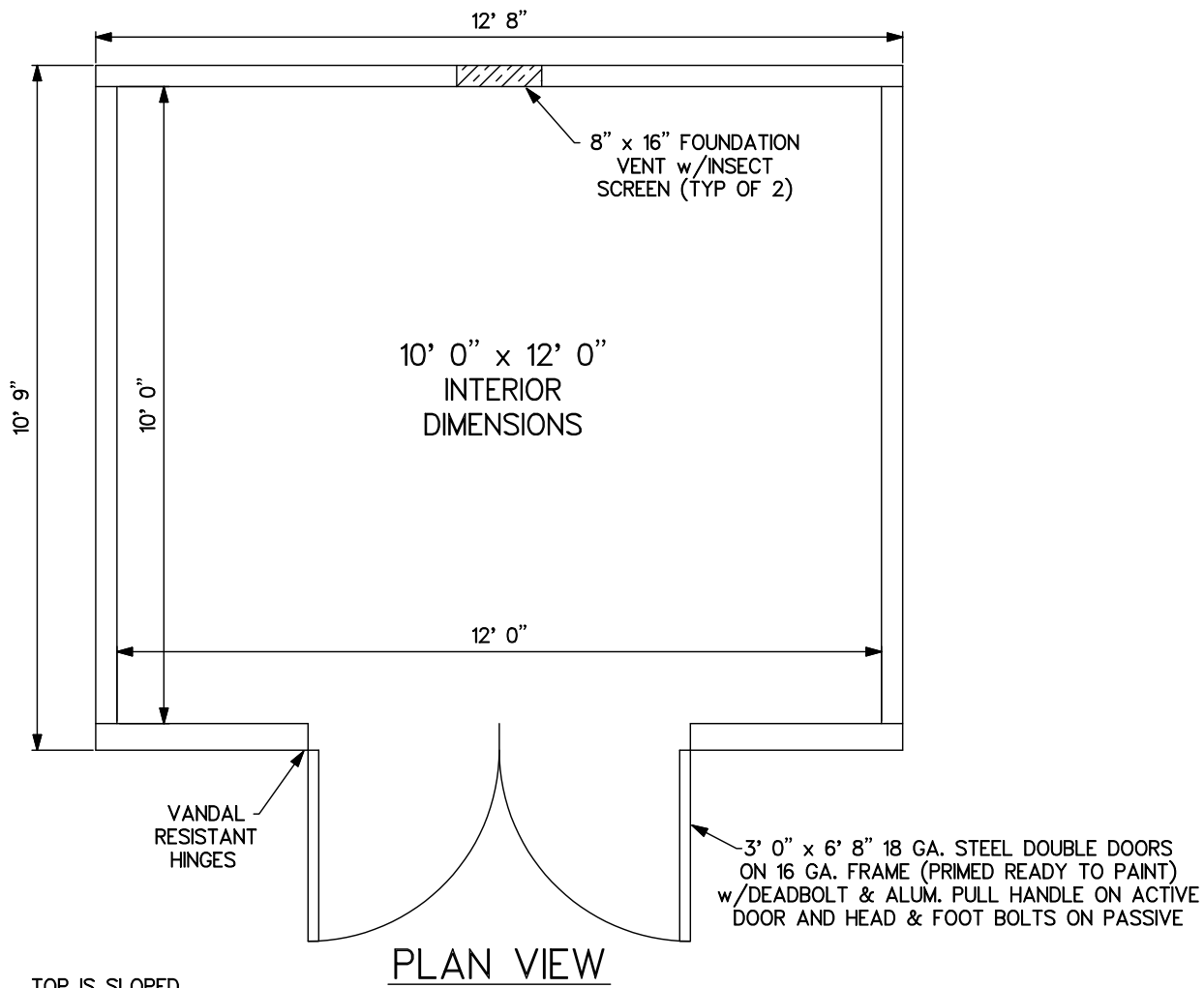
CLEAR FLOW
BY CP & P
CONCRETE PIPE & PRECAST, LLC
(800) 648 - 2678

SCALE: NONE

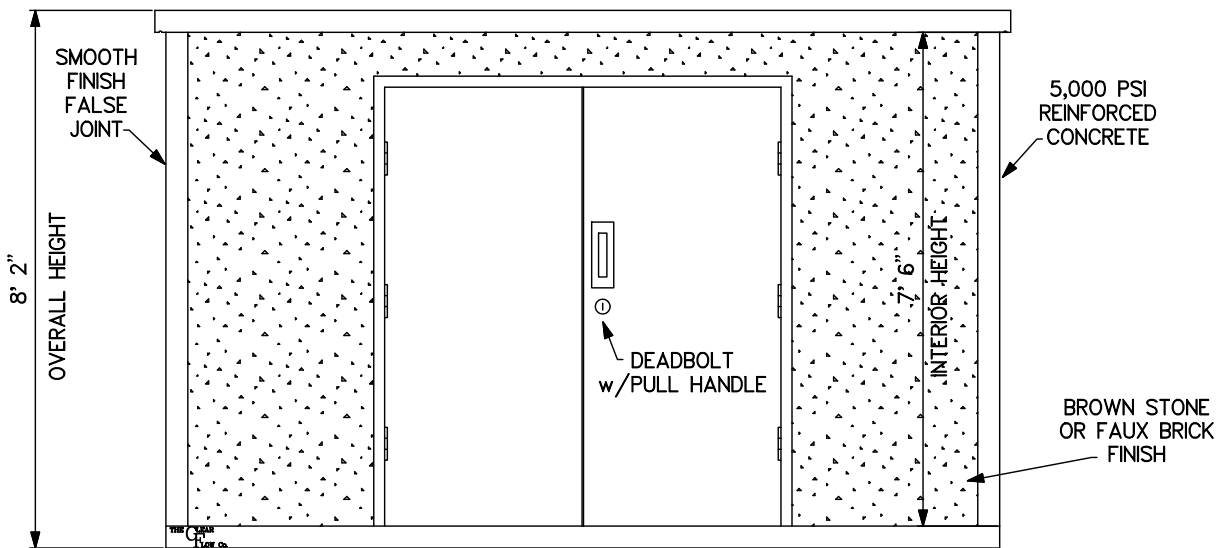
DATE: 2000

DWG: 10x10-BUILDING

10' x 10'
STONEWALL BUILDING



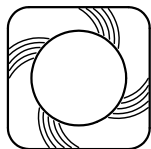
TOP IS SLOPED TOWARD REAR FOR RUNOFF



FRONT VIEW

NOTES:

1. CLEAR FLOW BUILDING DELIVERED AND SET ON CONTRACTOR PREPARED GRAVEL BASE



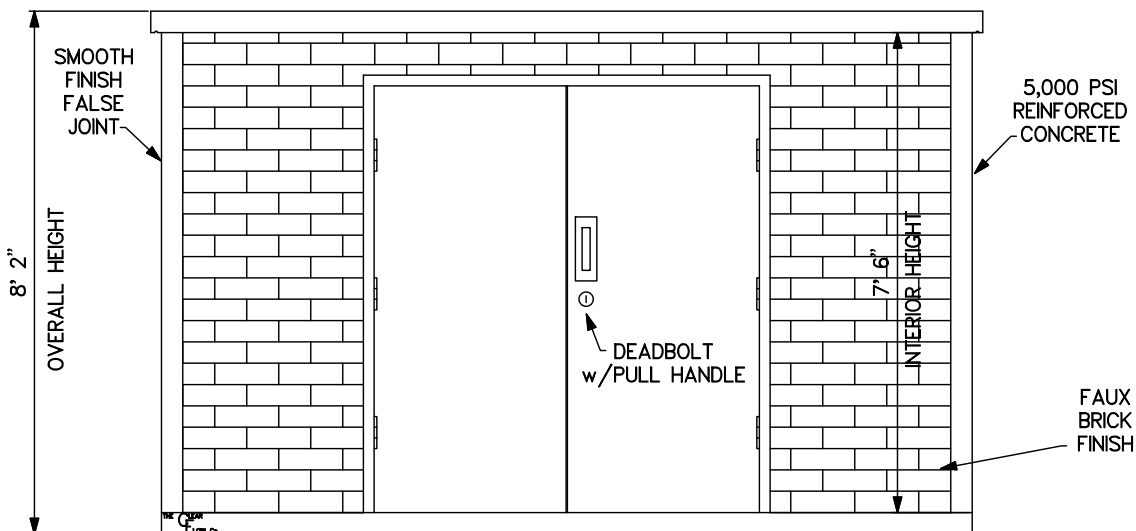
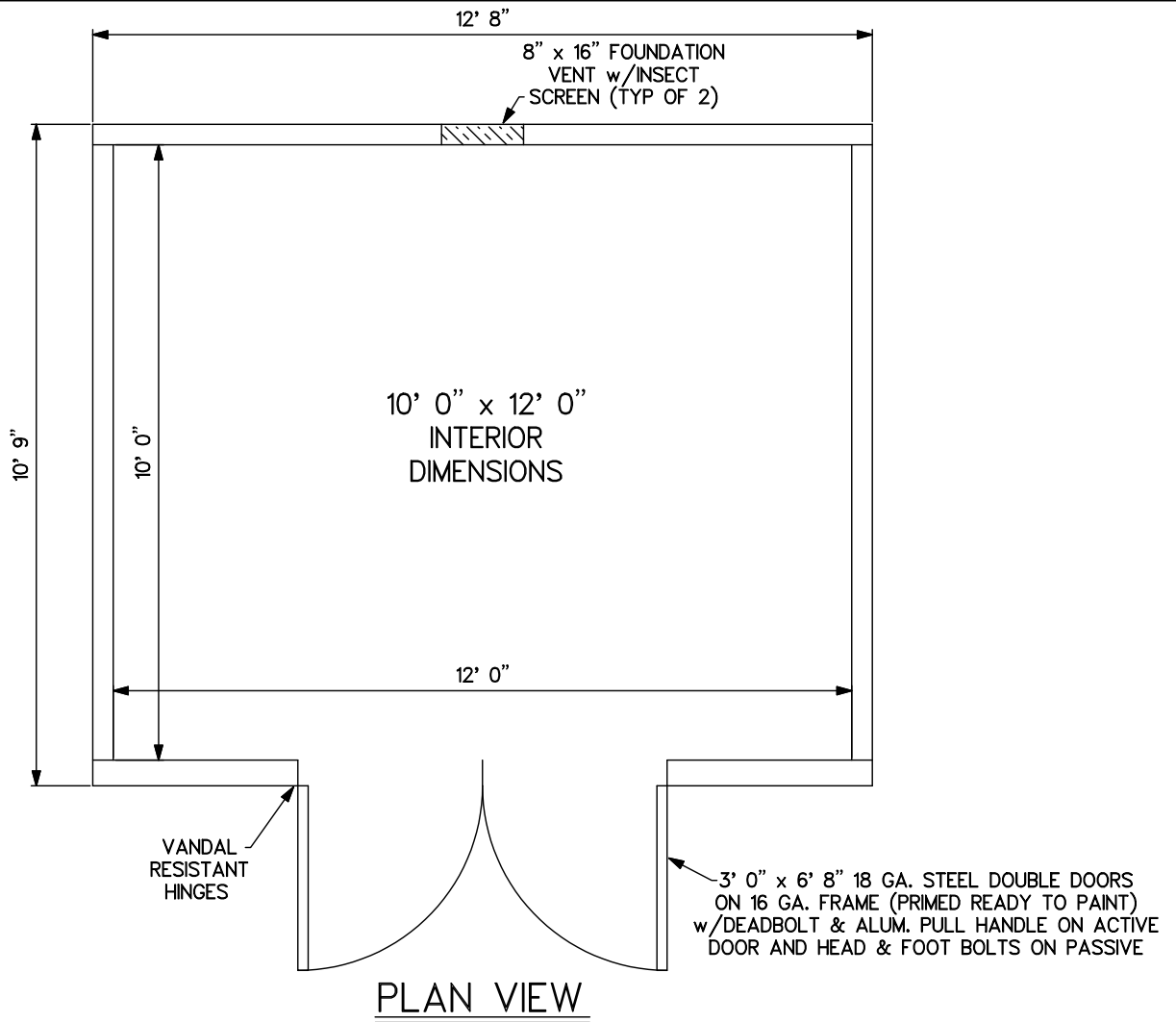
CLEAR FLOW
 BY CP & P
 CONCRETE PIPE & PRECAST, LLC
 (800) 648 - 2678

SCALE: NONE

DATE: 2000

DWG: 10x12-BUILDING

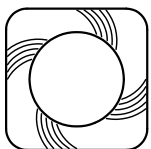
10' x 12'
 STONEWALL BUILDING



FRONT VIEW

NOTES:

1. CLEAR FLOW BUILDING DELIVERED AND SET ON CONTRACTOR PREPARED GRAVEL BASE



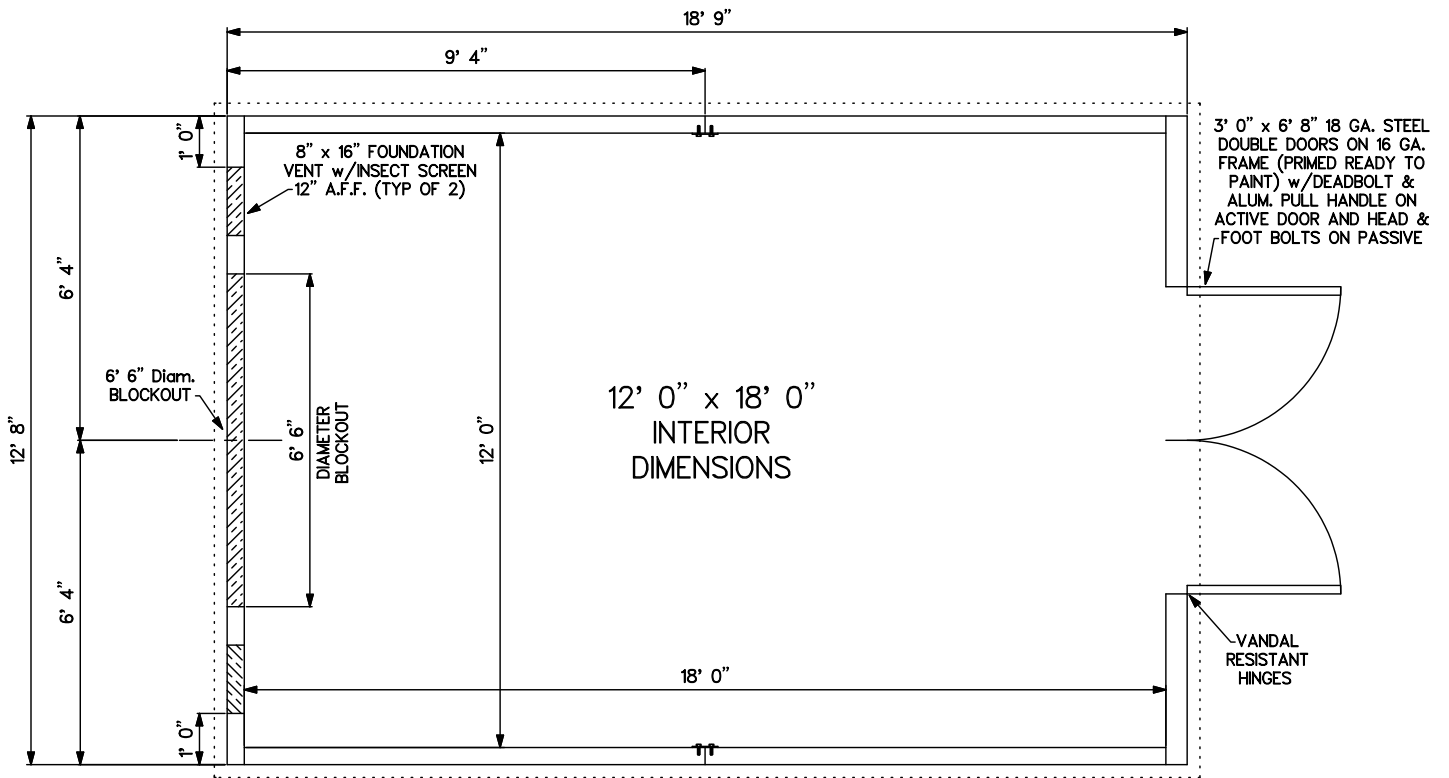
CLEAR FLOW
BY CP & P
 CONCRETE PIPE & PRECAST, LLC
 (800) 648 - 2678

SCALE: NONE

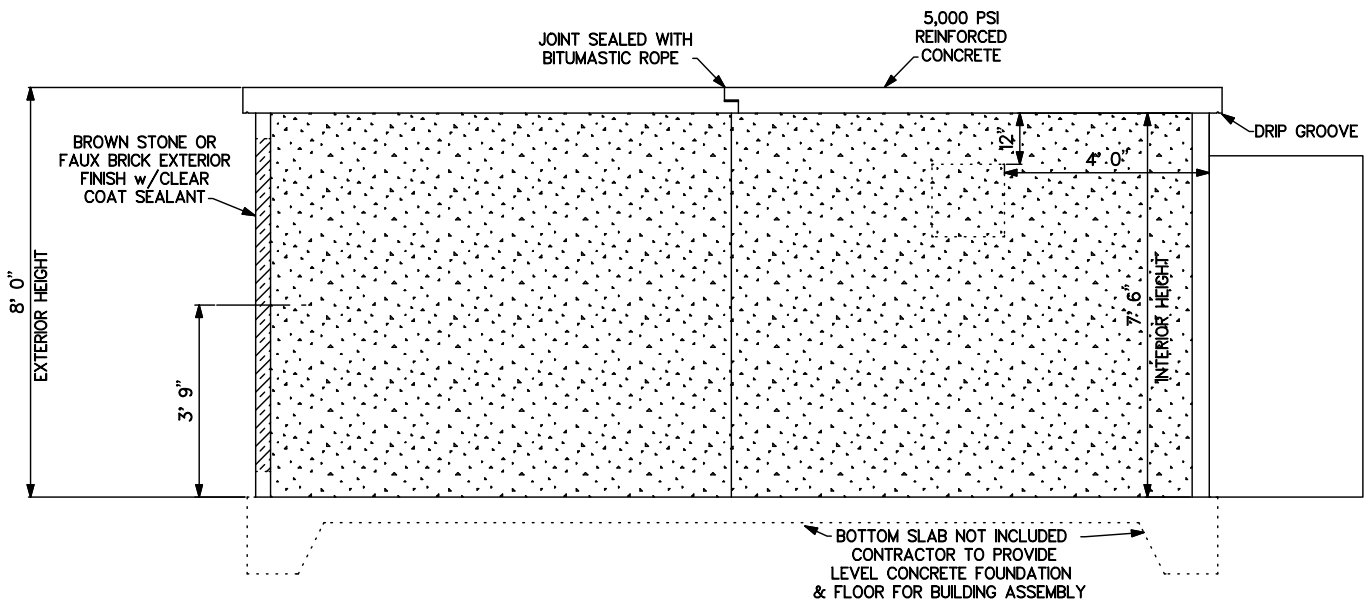
DATE: 2001

DWG: BRICK

**10' x 12' STONEWALL BUILDING
 w/FAUX BRICK FINISH**



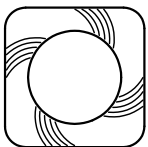
PLAN VIEW



LEFT SIDE VIEW

NOTES:

1. CLEAR FLOW BUILDING ASSEMBLED ON CONTRACTOR PREPARED BASE SLAB
2. BASE SLAB MUST BE SQUARE AND LEVEL FOR PROPER ASSEMBLY
3. CONTRACTOR WILL BE RESPONSIBLE FOR SEALING WALLS TO FLOOR IF SLAB IS UNEVEN OR IRREGULAR
4. BUILDING ALSO AVAILABLE WITH FALSE BRICK FINISH. SEVERAL COLORS AND PATTERNS ARE AVAILABLE



CLEAR FLOW
By CP & P
 CONCRETE PIPE & PRECAST, LLC
 (800) 648 - 2678

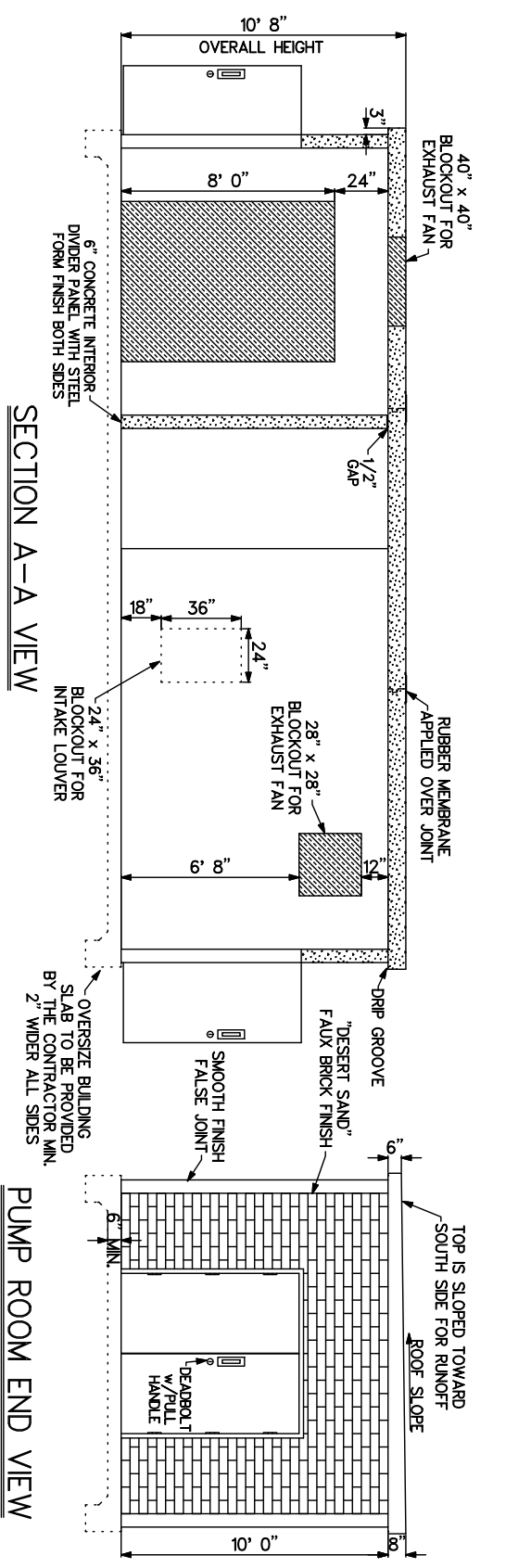
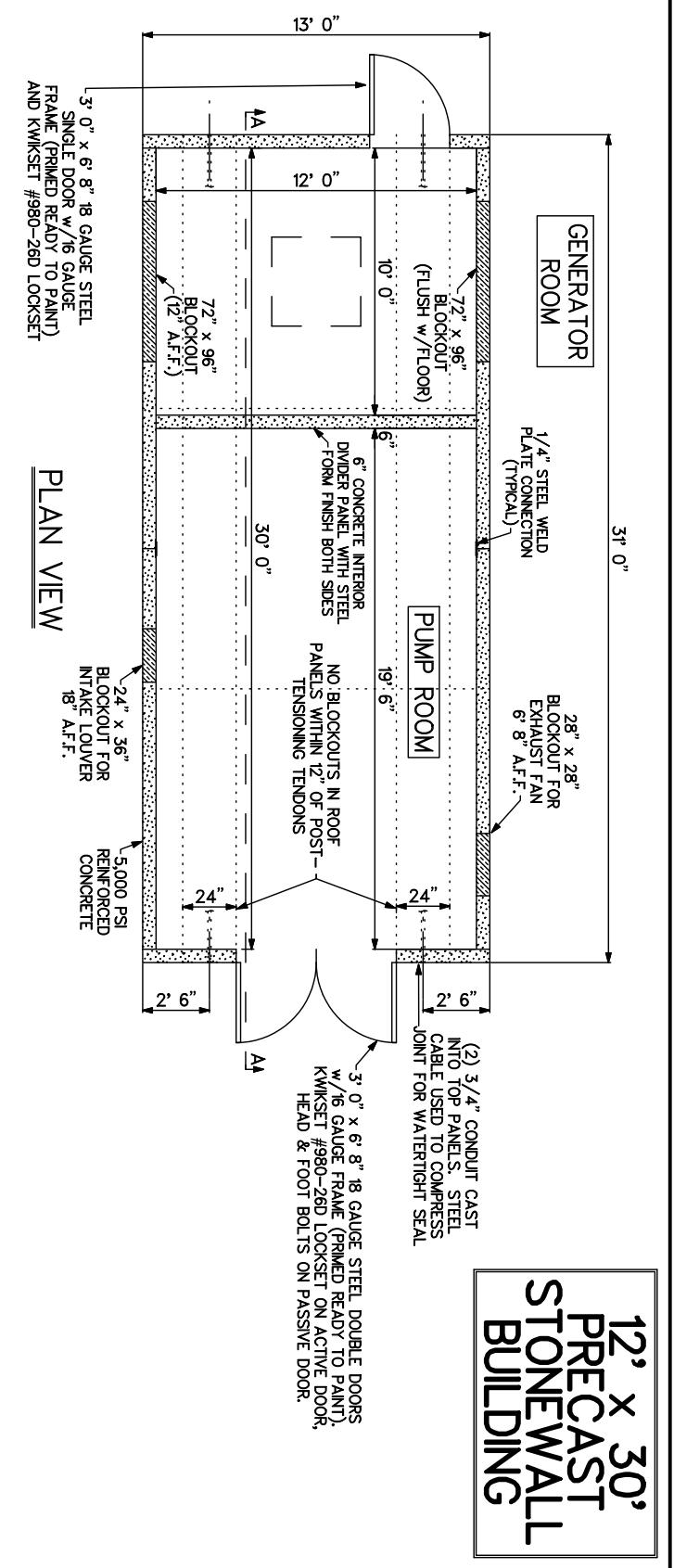
SCALE: NONE

DATE: 1/09/01

DWG: 12x18-BUILDING

**12' x 18' PRECAST STONEWALL BUILDING
 (ASSEMBLED ON-SITE)**

12' x 30' PRECAST STONEWALL BUILDING



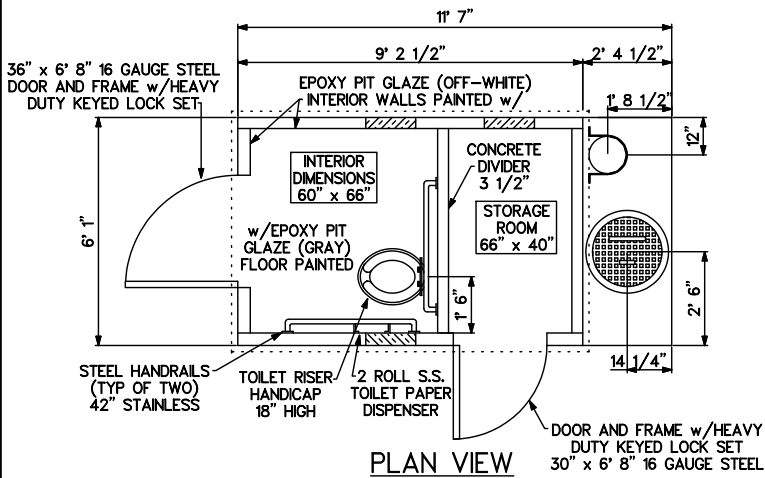
- NOTES:**
1. CLEAR FLOW BUILDING TO BE ASSEMBLED ON CONTRACTOR PREPARED FLOOR SLAB
 2. FLOOR SLAB MUST BE LEVEL AND SQUARE TO ENSURE PROPER INSTALLATION OF WALL PANELS. AN UNEVEN SLAB CAN CAUSE CRACKING & WEATHER SEAL PROBLEMS. CONTRACTOR SHALL BE RESPONSIBLE FOR WEATHER-TIGHT SEAL IF FLOOR SLAB IS NOT LEVEL AND SQUARE.
 3. ROOF SLABS SHALL BE POST-TENSIONED TOGETHER ON-SITE WITH TWO (2) TENDONS. ROOF SHALL SLOPE 2" FROM NORTH SIDE OF THE BUILDING TO SOUTH & HAVE A DRIP GROOVE CAST INTO THE EDGE. ROOF JOINTS SEALED WITH BUTYL RUBBER JOINT ROPE AND COVERED WITH RUBBER MEMBRANE.
 4. INTERIOR WALLS & CEILING SUPPLIED BARE STEEL FORM FINISH - PAINTING BY OTHERS
 5. EXTERIOR LOOKSETS TO BE KWIKSET 980S (26D FINISH) DEADBOLT WITH SINGLE CYLINDER - KEYPED OUTSIDE - THUMB LATCH INSIDE.



CLEAR FLOW
BY CP & P
 CONCRETE PIPE & PRECAST, LLC
 (800) 648 - 2678

SCALE: NONE DATE: 2/12/13 DWG: 12x30 BUILDING

12' x 30' PRECAST STONEWALL BUILDING



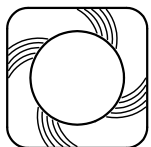
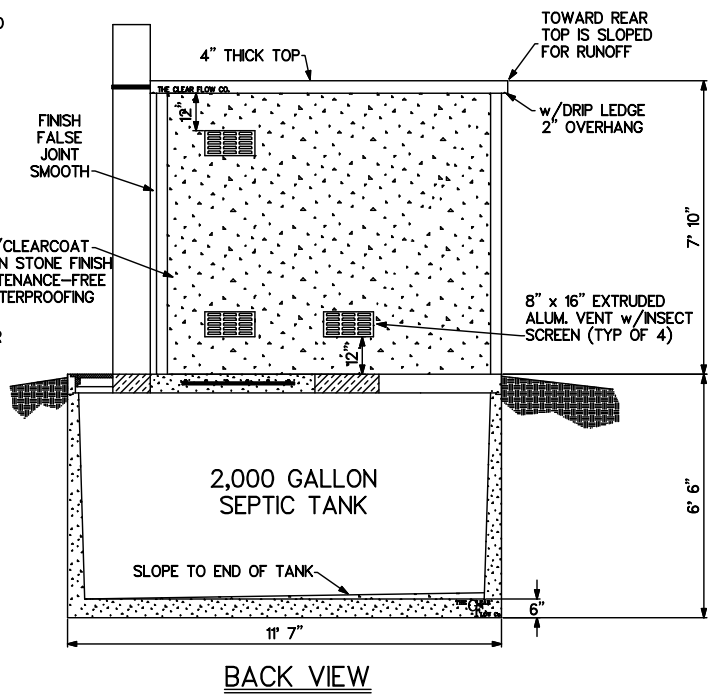
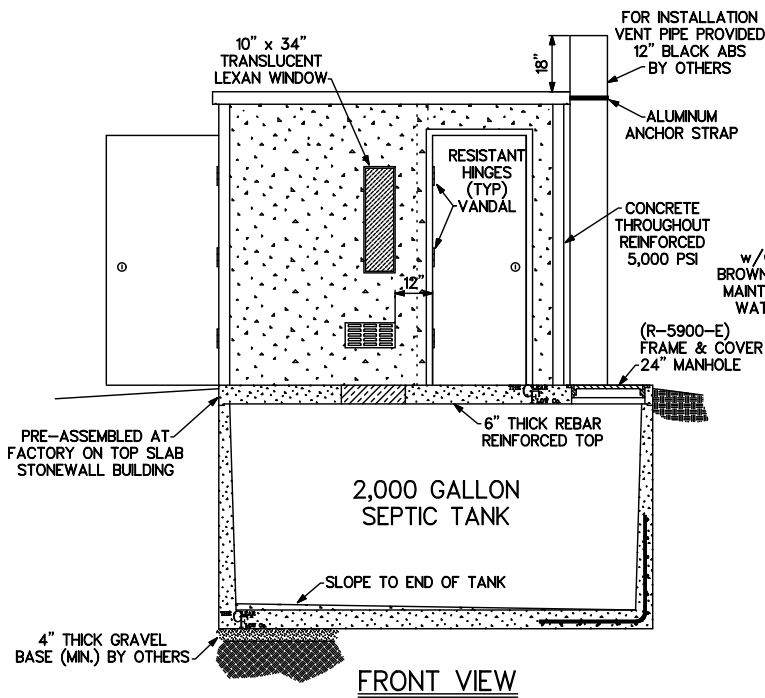
STONEWALL UNI-SEX LATRINE UNIT

NOTES:

1. CLEAR FLOW LATRINE UNIT DELIVERED IN TWO SECTIONS FOR ON-SITE ASSEMBLY
2. BUILDING PRE-ASSEMBLED AT FACTORY ON TOP SLAB OF TANK AND INSTALLATION BY THE CONTRACTOR
3. LATRINE UNIT IS DESIGNED TO BE OPERATIONAL IN LESS THAN ONE DAY
4. VENT PIPE SUPPLIED LOOSE FOR INSTALLATION BY OTHERS. VENT SHOULD FACE SOUTH TO FULLY UTILIZE SOLAR-INDUCED VENTILATION

OPTIONS:

- BULLET RESISTANT DOORS
- ADDITIONAL BLOCKOUTS BY REQUEST
- INTERNAL COMPONENTS (SINKS, URINALS, ETC.)
- SUBMERSIBLE PUMPING SYSTEM AVAILABLE



CLEAR FLOW

BY CP & P

CONCRETE PIPE & PRECAST, LLC

(800) 648 - 2678

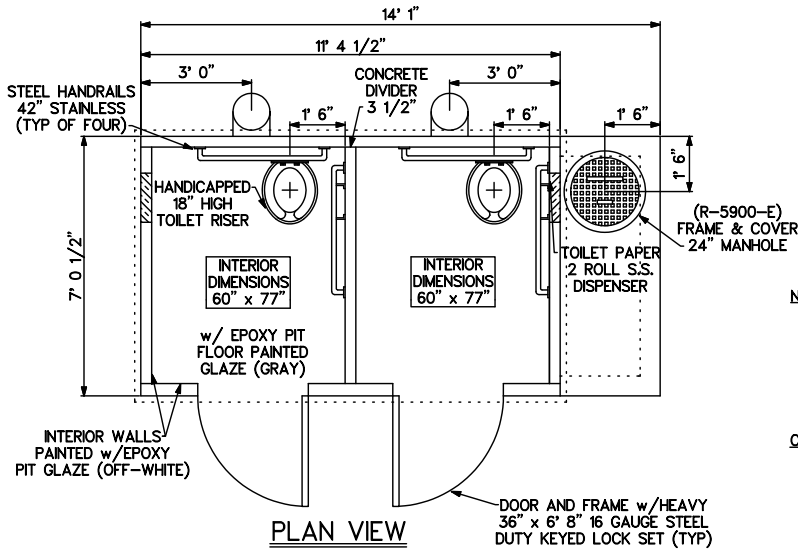
SCALE: NONE

DATE: 4/10/95

DWG: LATRINE UNIT-SINGLE

STONEWALL UNI-SEX
LATRINE UNIT w/STORAGE ROOM

STONEWALL DOUBLE LATRINE UNIT

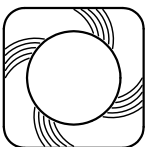
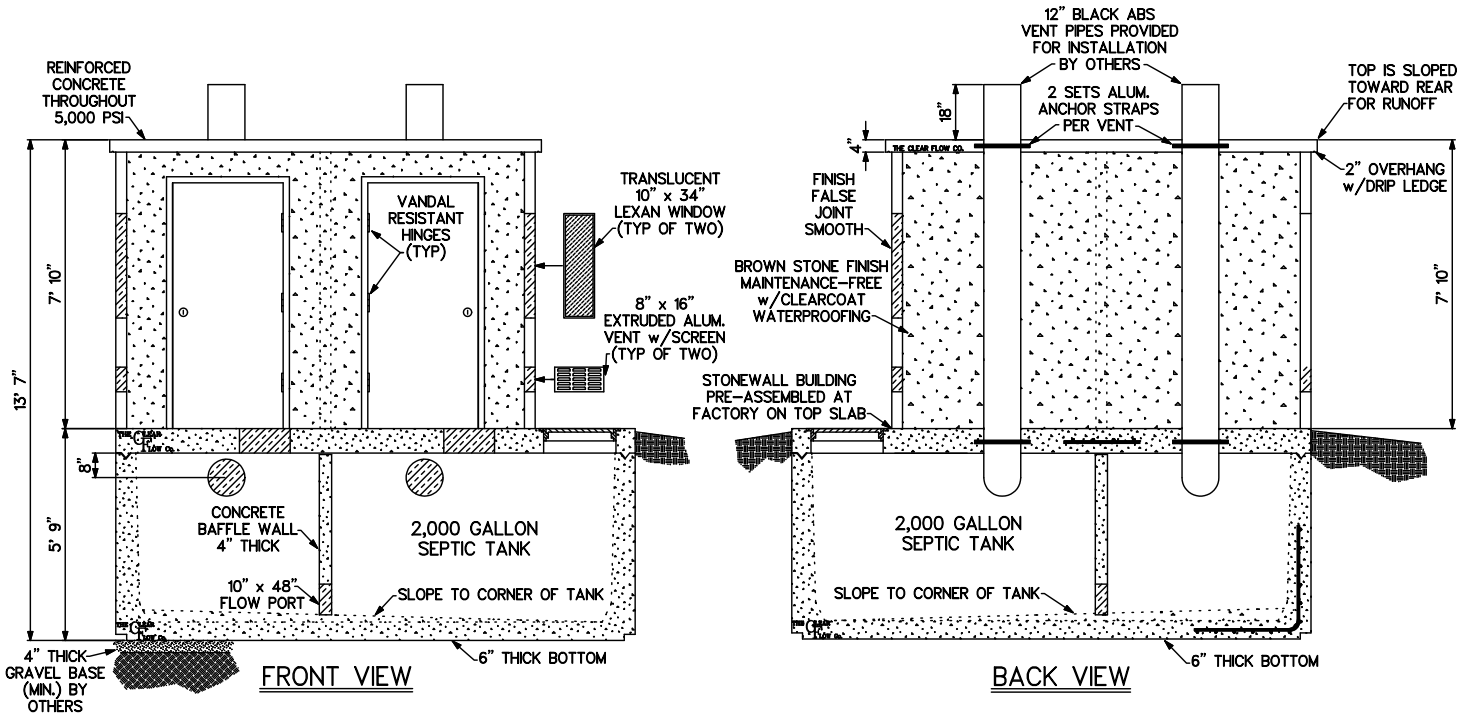


NOTES:

1. CLEAR FLOW LATRINE UNIT DELIVERED IN TWO SECTIONS FOR ON-SITE ASSEMBLY
2. BUILDING PRE-ASSEMBLED AT FACTORY ON TOP SLAB OF TANK AND INSTALLATION BY THE CONTRACTOR
3. LATRINE UNIT IS DESIGNED TO BE OPERATIONAL IN LESS THAN ONE DAY
4. VENT PIPE SUPPLIED LOOSE FOR INSTALLATION BY OTHERS, VENTS SHOULD FACE SOUTH TO FULLY UTILIZE NATURAL SOLAR-INDUCED VENTILATION

OPTIONS:

- BULLET RESISTANT DOORS
- ADDITIONAL BLOCKOUTS BY REQUEST
- INTERNAL COMPONENTS (SINKS, URINALS, ETC.)
- SUBMERSIBLE PUMPING SYSTEM AVAILABLE



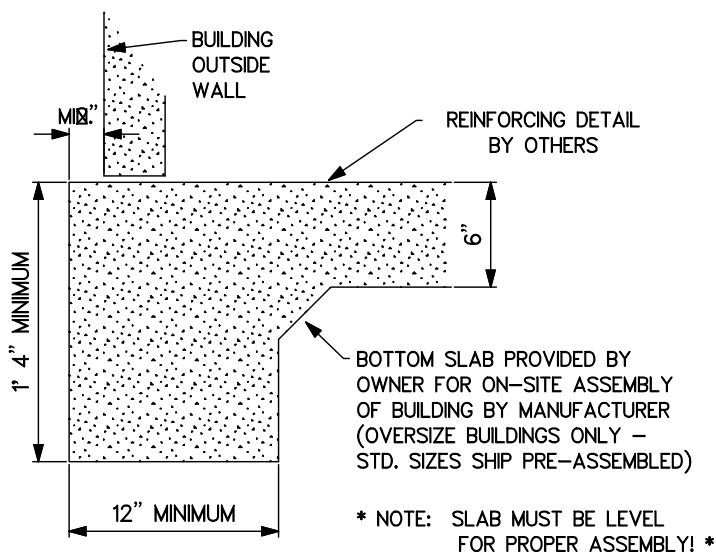
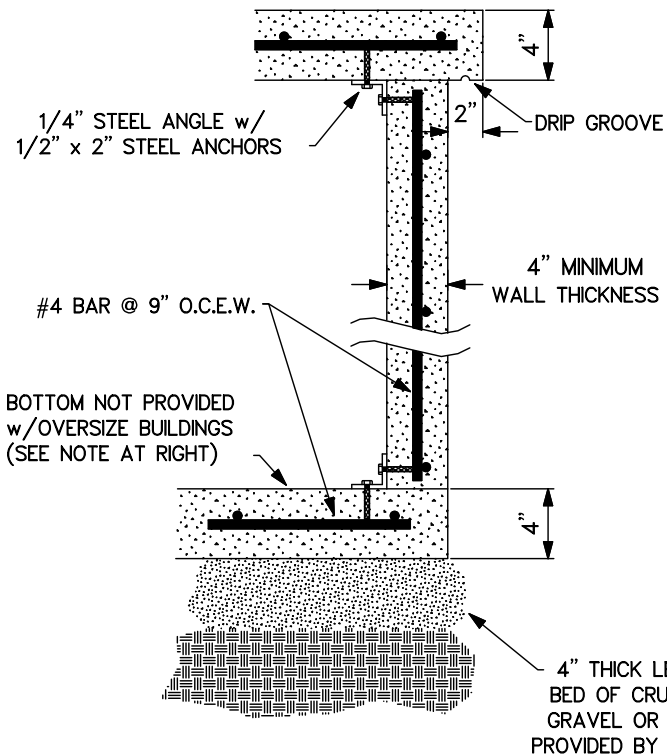
CLEAR FLOW
BY CP & P
CONCRETE PIPE & PRECAST, LLC
(800) 648 - 2678

SCALE: NONE

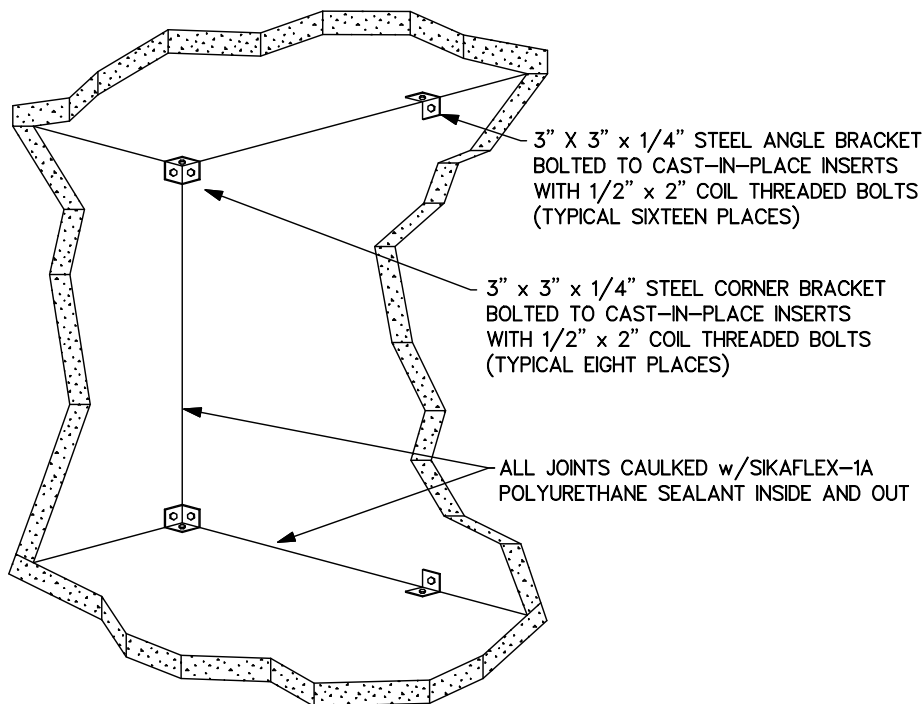
DATE: 4/10/95

DWG: LATRINE UNIT-DOUBLE

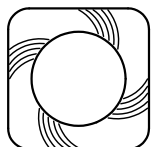
**STONEWALL DOUBLE
LATRINE UNIT**



**OVERSIZE BUILDING
BOTTOM SLAB DETAIL**



PANEL CONNECTION DETAIL



CLEAR FLOW
BY CP & P
CONCRETE PIPE & PRECAST, LLC
(800) 648 - 2678

SCALE: NONE

DATE: 2000

DWG: BLDG-DETAIL

**PRECAST STONEWALL BUILDING
ASSEMBLY DETAILS**