

FOR LEASE

8700 Stony Point Parkway
Richmond, VA 23235

Stony Point Medical Office Building

Recently Renovated!



**COMMONWEALTH
COMMERCIAL**

Comprehensive Property Solutions

For more information:

TUCKER DOWDY, SIOR

Senior Vice President | Partner

804-228-4932

tdowdy@commonwealthcommercial.com

JAMIE GALANTI, CCIM, SIOR

Senior Vice President | Partner

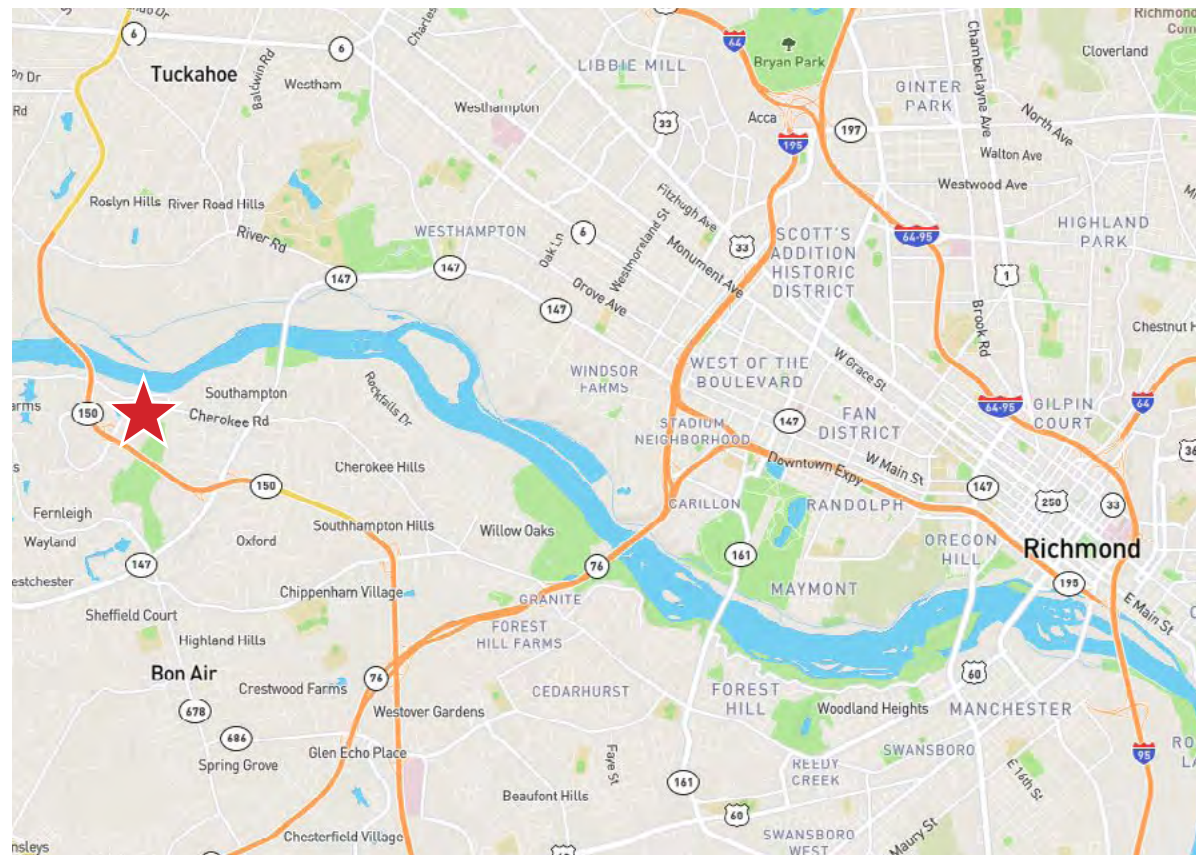
804-433-1825

jgalanti@commonwealthcommercial.com

PROPERTY HIGHLIGHTS

Class A Medical Space Available in the Premier Medical Hub South of the James River

- › Excellent location with immediate access to Chippenham Parkway (150) and Stony Point Fashion Park
- › Abundant parking available on site
- › (4.41 spaces per 1,000 SF)
- › Join a highly respected medical tenant mix including MEDARVA Surgery Center, VA Cardiovascular Specialists, Richmond ENT, Colon & Rectal Specialists, as well as VCU Children's Urology and VCU Ophthalmology
- › Lease Rate: \$24/SF, NNN



JOIN A THRIVING MEDICAL COMMUNITY



DEMOGRAPHICS	1 MILE	3 MILE	5 MILE
POPULATION	3,189	46,597	172,238
AVERAGE HH INCOME	\$134,393	\$170,244	\$119,370
DAYTIME EMPLOYEE	3,421	18,394	116,797

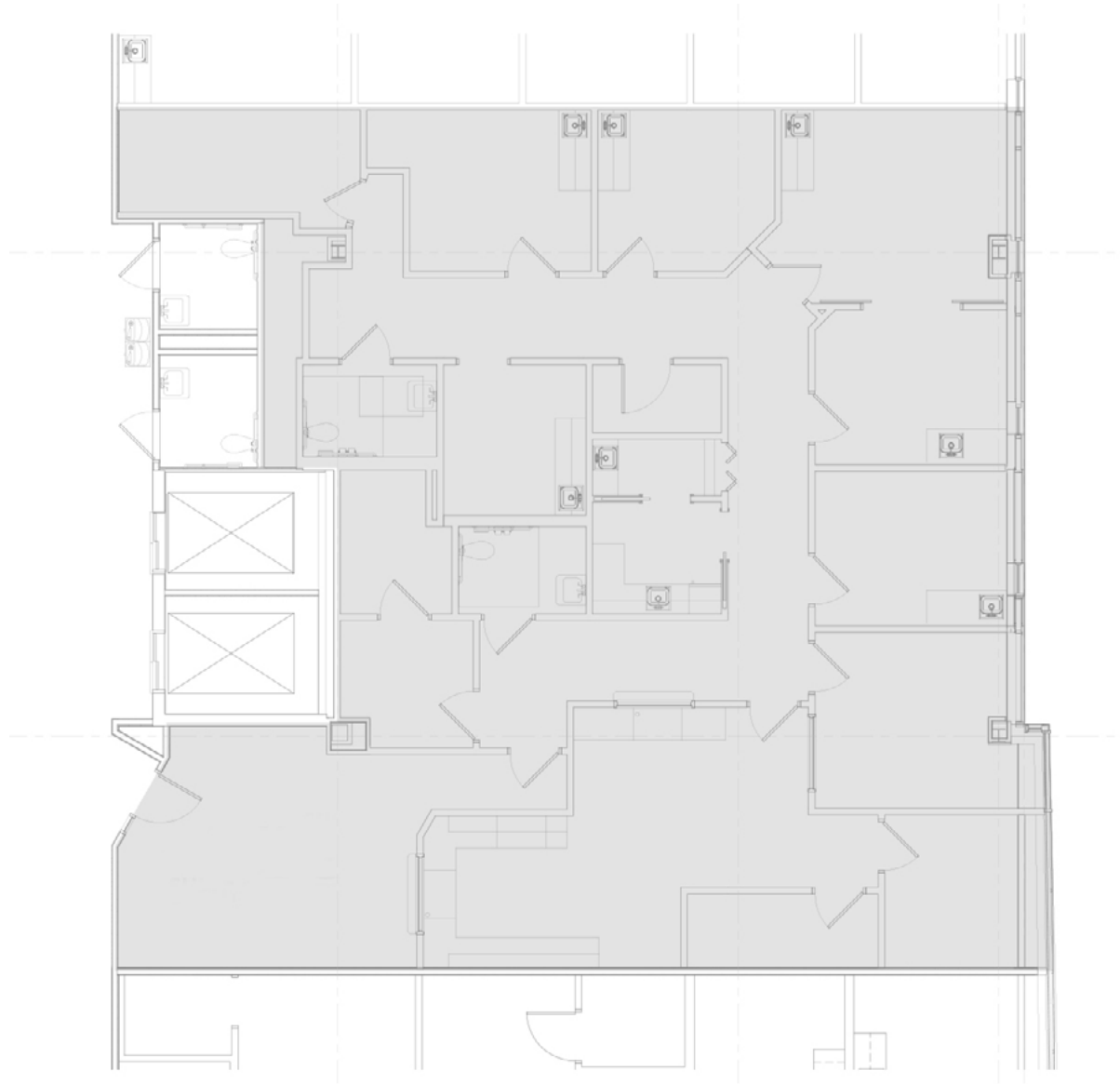




FLOOR PLAN

SECOND FLOOR

Suite 230 - 2,948 RSF





MAIN OFFICE ADDRESS: 4198 Cox Road, Suite 200 | Glen Allen, VA 23060

T 804-346-4966 | COMMONWEALTHCOMMERCIAL.COM

Commonwealth Commercial Partners, LLC represents the Tenant of this property. Information contained herein, is deemed reliable but not guaranteed.