

FOR SALE

EXCELLENT LOCATION

Commercial Land

Route 15 and Commerce Road | Farmville, VA



COMMONWEALTH
COMMERCIAL
Comprehensive Property Solutions



FEATURES

- › 13.95± acres available
- › Zoned General Commercial (C-1)
- › Signalized intersection
- › Approximately 400' of frontage along Route 15
- › Easy access to Route 460
- › Area retailers include: Lowe's, Walmart, Belk, Tractor Supply, Sheetz, KFC, Arby's, Taco Bell, Dollar Tree and more!

DEMOGRAPHICS	3 MILE	5 MILE	10 MILE
POPULATION	9,290	14,276	22,552
AVERAGE HH INCOME	\$73,129	\$75,810	\$79,489
DAYTIME EMPLOYEES	7,263	11,826	18,455

FOR MORE INFORMATION:

MICHAEL MORRIS

First Vice President

804-793-0053

mmorris@commonwealthcommercial.com

TODD BUTTNER

Senior Associate

804-793-0059

tbuttner@commonwealthcommercial.com

JAMES H. MCVEY

Senior Vice President | Partner

804-433-1822

jmcvey@commonwealthcommercial.com

Commonwealth Commercial Partners, LLC represents the Owner of this property. Information contained herein is deemed reliable but is not guaranteed.

FOR SALE | ROUTE 15 AND COMMERCE ROAD | FARMVILLE, VA 23901



COMMONWEALTH
COMMERCIAL
Comprehensive Property Solutions

13.95± ACRES AVAILABLE

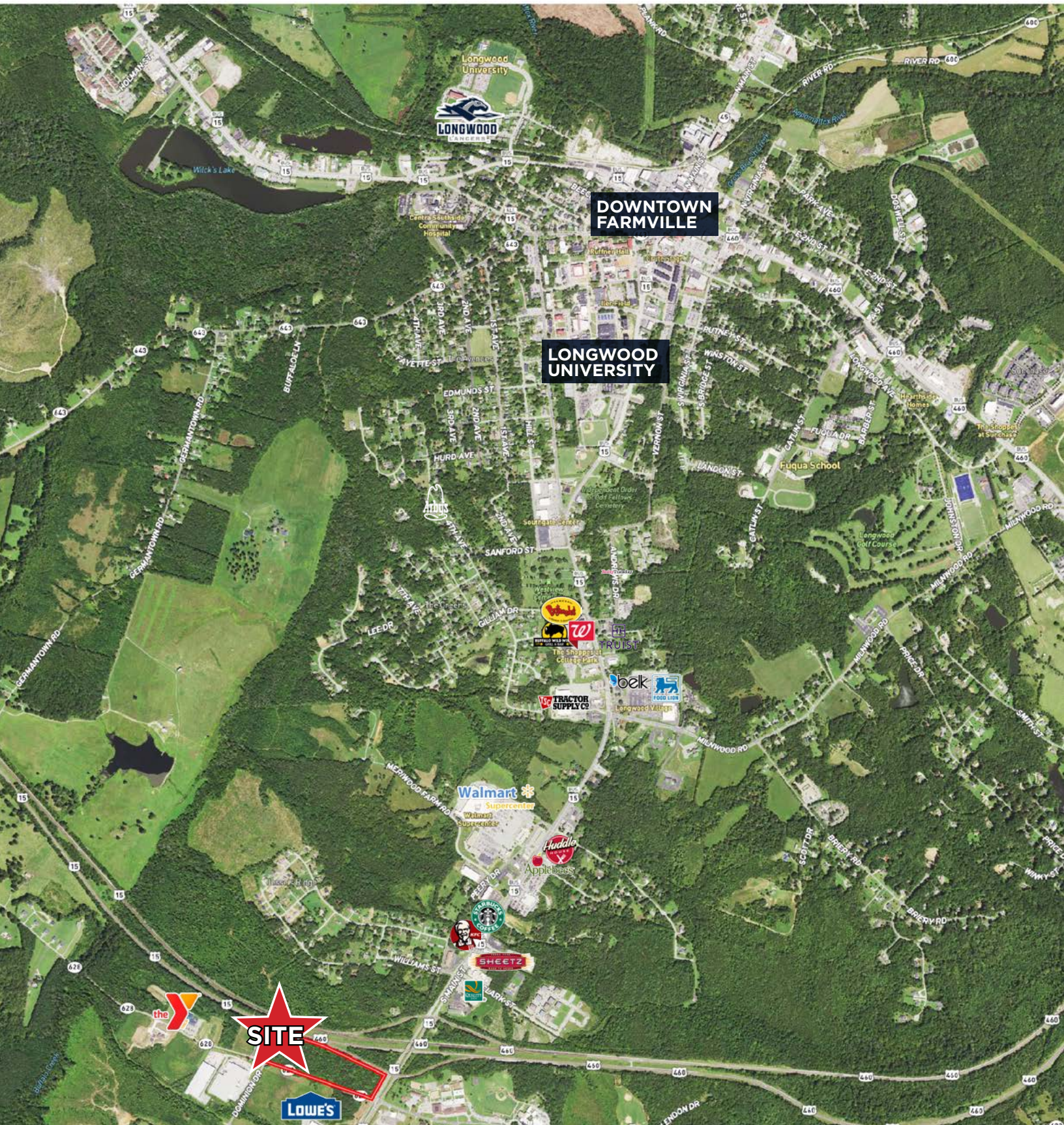


FOR SALE | ROUTE 15 AND COMMERCE ROAD | FARMVILLE, VA 23901



**COMMONWEALTH
COMMERCIAL**
Comprehensive Property Solutions

SURROUNDING RETAIL



FOR SALE | ROUTE 15 AND COMMERCE ROAD | FARMVILLE, VA 23901