

For Sale | 483 Acres

Rolfe Highway, Surry, VA 23883

PRICE: \$2,150,000 ▪ SURRY COUNTY



Features

- The property was timbered in 2019 and has planted pine across most of the landscape with hardwood draws mixed throughout. The property composition is ideally set up for sportsmen and recreation with a possibility for immediate or future development
- Over 2 miles of frontage on Crouch Creek with short access to the James River. The frontage is hard bank to water edge, as well as long marsh frontage. The marsh provides great waterfowling due to proximity to the James and nearby notable farms
- Roughly 1.25 miles of road frontage on Rolfe Highway and only 1 mile from the Jamestown Ferry, which allows for a convenient location to The Peninsula and the Williamsburg area
- Sellers are open to property divisions, and division rights per Surry County code can be provided upon request

LATITUDE & LONGITUDE 37.170605, -76.795103

For More Information:

Brent Altaffer

Vice President

o: 804-793-0055

baltaffer@commonwealthland.com

Bill Barnett

Senior Vice President | Partner

o: 804-433-1821

bbarnett@commonwealthland.com

4198 Cox Road, Suite 200
Glen Allen, VA 23060

o: 804-346-4966

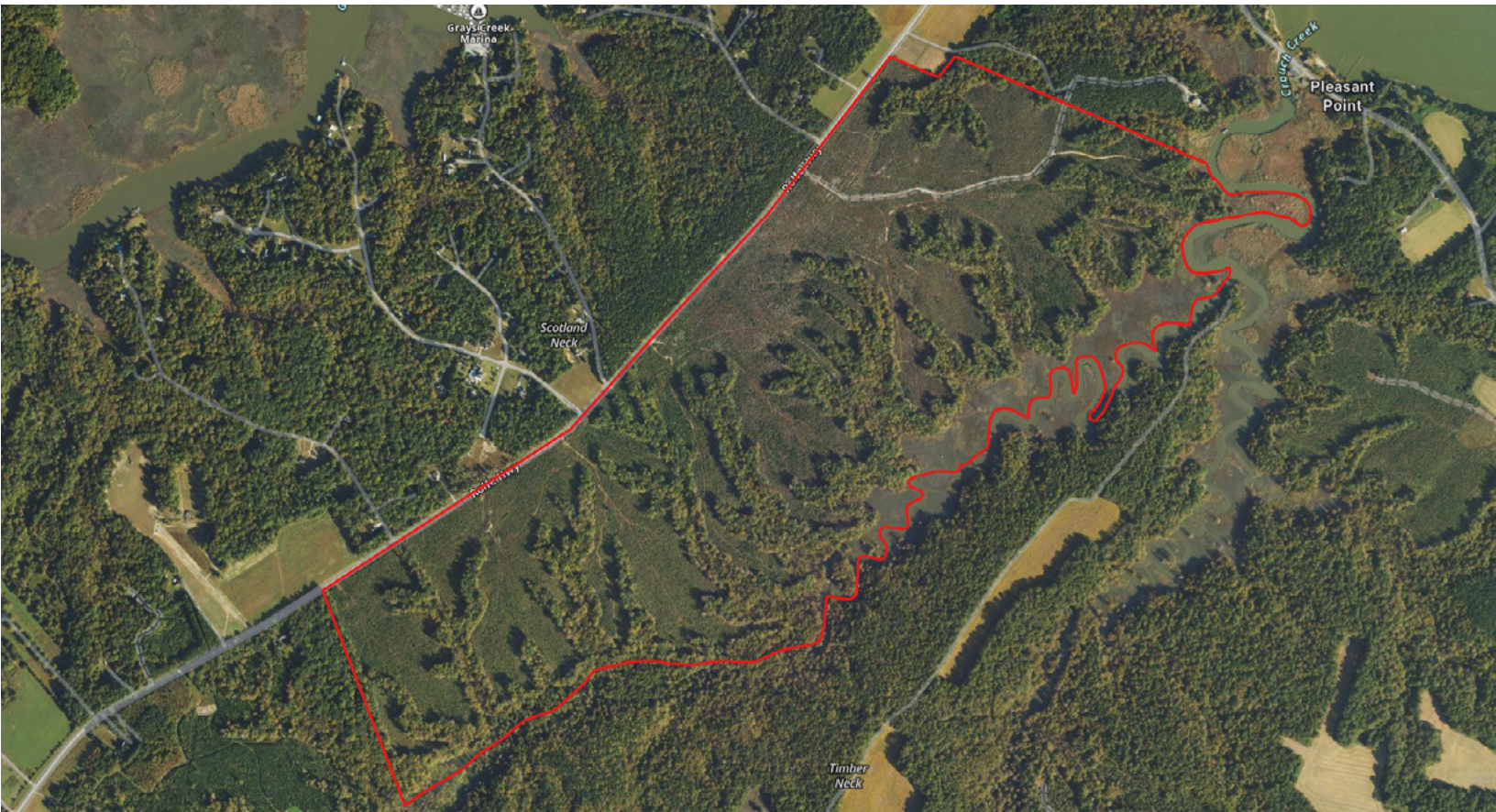
commonwealthcommercial.com

Commonwealth represents the Owner of this property.
Information contained herein, is deemed reliable but not guaranteed.

For Sale | 483 Acres

Rolfe Highway, Surry, VA 23883

PRICE: \$2,150,000 ▪ SURRY COUNTY



4198 Cox Road, Suite 200
Glen Allen, VA 23060
o: 804-346-4966
commonwealthcommercial.com

For More Information:

Brent Altaffer

Vice President

o: 804-793-0055

baltaffer@commonwealthland.com

Bill Barnett

Senior Vice President | Partner

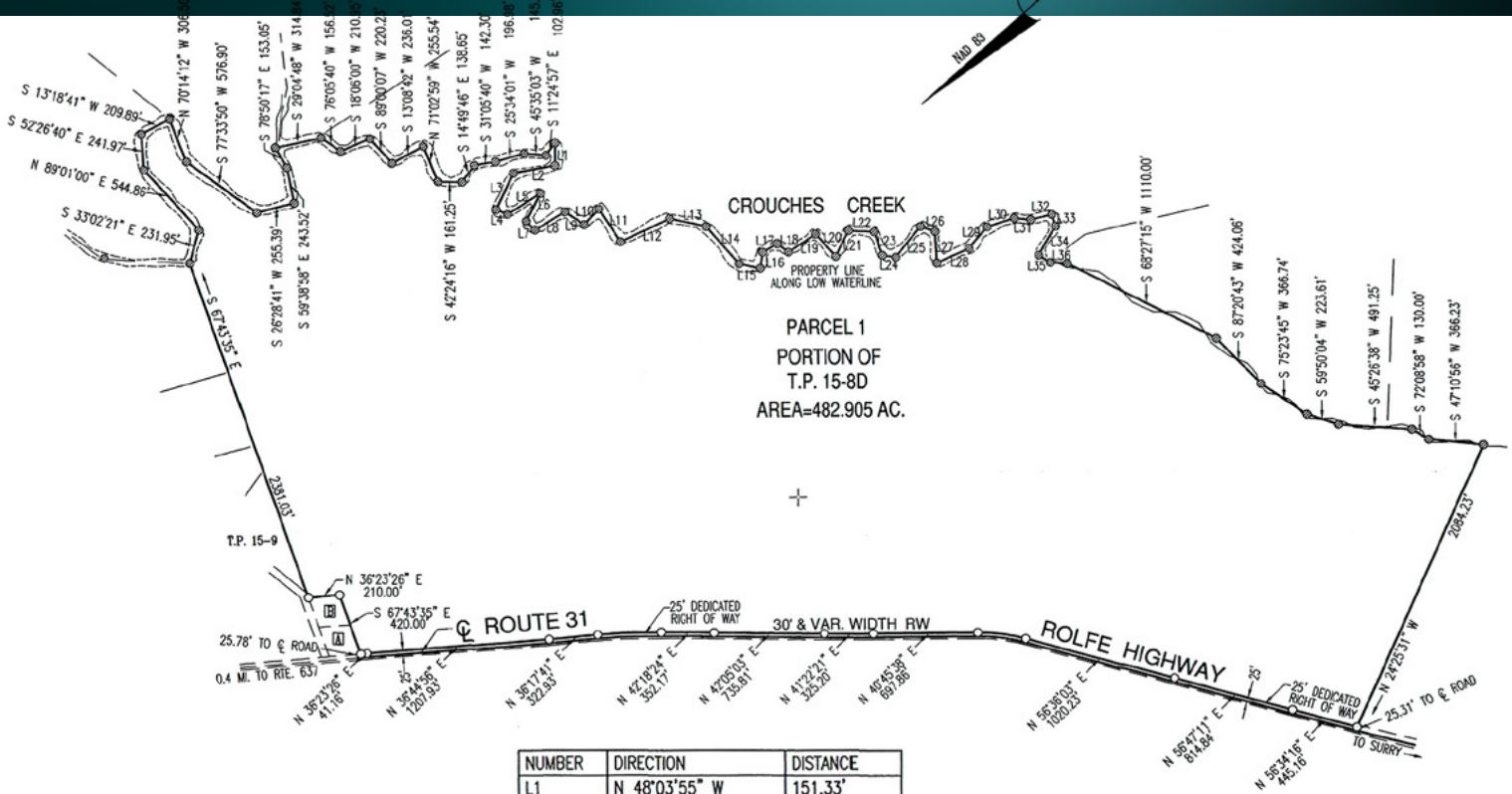
o: 804-433-1821

bbarnett@commonwealthland.com

For Sale | 483 Acres

Rolfe Highway, Surry, VA 23883

PRICE: \$2,150,000 ▪ SURRY COUNTY



NUMBER	DIRECTION	DISTANCE
L1	N 48°03'55" W	151.33'
L2	N 30°46'15" E	279.87'
L3	N 23°22'04" W	272.03'
L4	S 63°33'57" W	82.46'
L5	S 08°26'52" W	258.70'
L6	N 22°27'59" W	210.30'
L7	S 87°05'53" W	82.01'
L8	S 09°43'26" W	234.31'
L9	S 76°05'40" W	156.52'
L10	S 06°46'50" E	144.22'
L11	N 81°39'23" W	265.75'
L12	S 15°50'22" W	360.56'
L13	S 54°06'12" W	250.80'
L14	N 89°07'22" W	333.02'
L15	S 53°28'29" W	145.34'
L16	S 40°28'14" E	110.00'
L17	S 11°39'16" W	114.02'
L18	S 78°53'14" W	91.79'
L19	S 08°13'15" W	219.66'
L20	S 89°30'59" W	202.30'
L21	S 22°30'05" E	194.49'
L22	S 44°29'13" W	170.66'
L23	N 67°02'08" W	167.71'
L24	S 49°31'46" W	90.00'
L25	S 10°03'34" E	266.69'
L26	S 60°50'22" W	101.98'
L27	N 51°15'17" W	213.78'
L28	S 16°30'20" W	238.54'
L29	S 08°27'55" E	188.68'
L30	S 22°57'52" W	190.07'
L31	S 46°55'37" W	110.11'
L32	S 27°21'47" W	145.77'
L33	N 65°29'15" W	82.76'
L34	N 18°26'04" W	226.55'
L35	S 74°43'50" W	93.94'
L36	S 44°20'06" W	110.45'

For More Information:

Brent Altaffer

Vice President

o: 804-793-0055

baltaffer@commonwealthland.com

Bill Barnett

Senior Vice President | Partner

o: 804-433-1821

bbarnett@commonwealthland.com



4198 Cox Road, Suite 200
Glen Allen, VA 23060

o: 804-346-4966

commonwealthcommercial.com

For Sale | 483 Acres

Rolfe Highway, Surry, VA 23883

PRICE: \$2,150,000 ▪ SURRY COUNTY



For More Information:

Brent Altaffer

Vice President

o: 804-793-0055

baltaffer@commonwealthland.com

Bill Barnett

Senior Vice President | Partner

o: 804-433-1821

bbarnett@commonwealthland.com



4198 Cox Road, Suite 200
Glen Allen, VA 23060

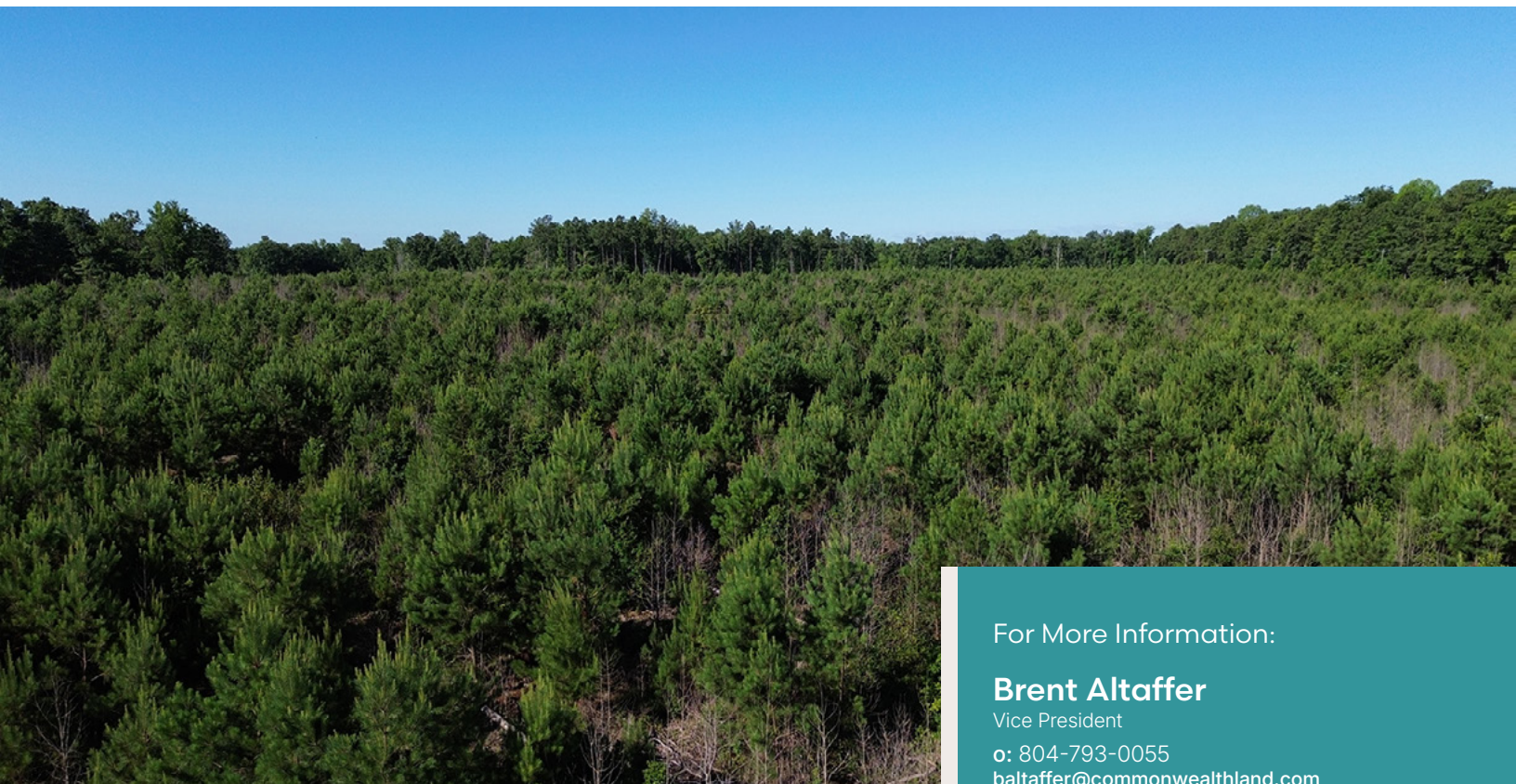
o: 804-346-4966

commonwealthcommercial.com

For Sale | 483 Acres

Rolfe Highway, Surry, VA 23883

PRICE: \$2,150,000 ▪ SURRY COUNTY



For More Information:

Brent Altaffer

Vice President

o: 804-793-0055

baltaffer@commonwealthland.com

Bill Barnett

Senior Vice President | Partner

o: 804-433-1821

bbarnett@commonwealthland.com



4198 Cox Road, Suite 200
Glen Allen, VA 23060

o: 804-346-4966

commonwealthcommercial.com

For Sale | 483 Acres

Rolfe Highway, Surry, VA 23883

PRICE: \$2,150,000 ▪ SURRY COUNTY



For More Information:

Brent Altaffer

Vice President

o: 804-793-0055

baltaffer@commonwealthland.com

Bill Barnett

Senior Vice President | Partner

o: 804-433-1821

bbarnett@commonwealthland.com



4198 Cox Road, Suite 200
Glen Allen, VA 23060

o: 804-346-4966

commonwealthcommercial.com

For Sale | 483 Acres

Rolfe Highway, Surry, VA 23883

PRICE: \$2,150,000 ▪ SURRY COUNTY



For More Information:

Brent Altaffer

Vice President

o: 804-793-0055

baltaffer@commonwealthland.com

Bill Barnett

Senior Vice President | Partner

o: 804-433-1821

bbarnett@commonwealthland.com



4198 Cox Road, Suite 200
Glen Allen, VA 23060

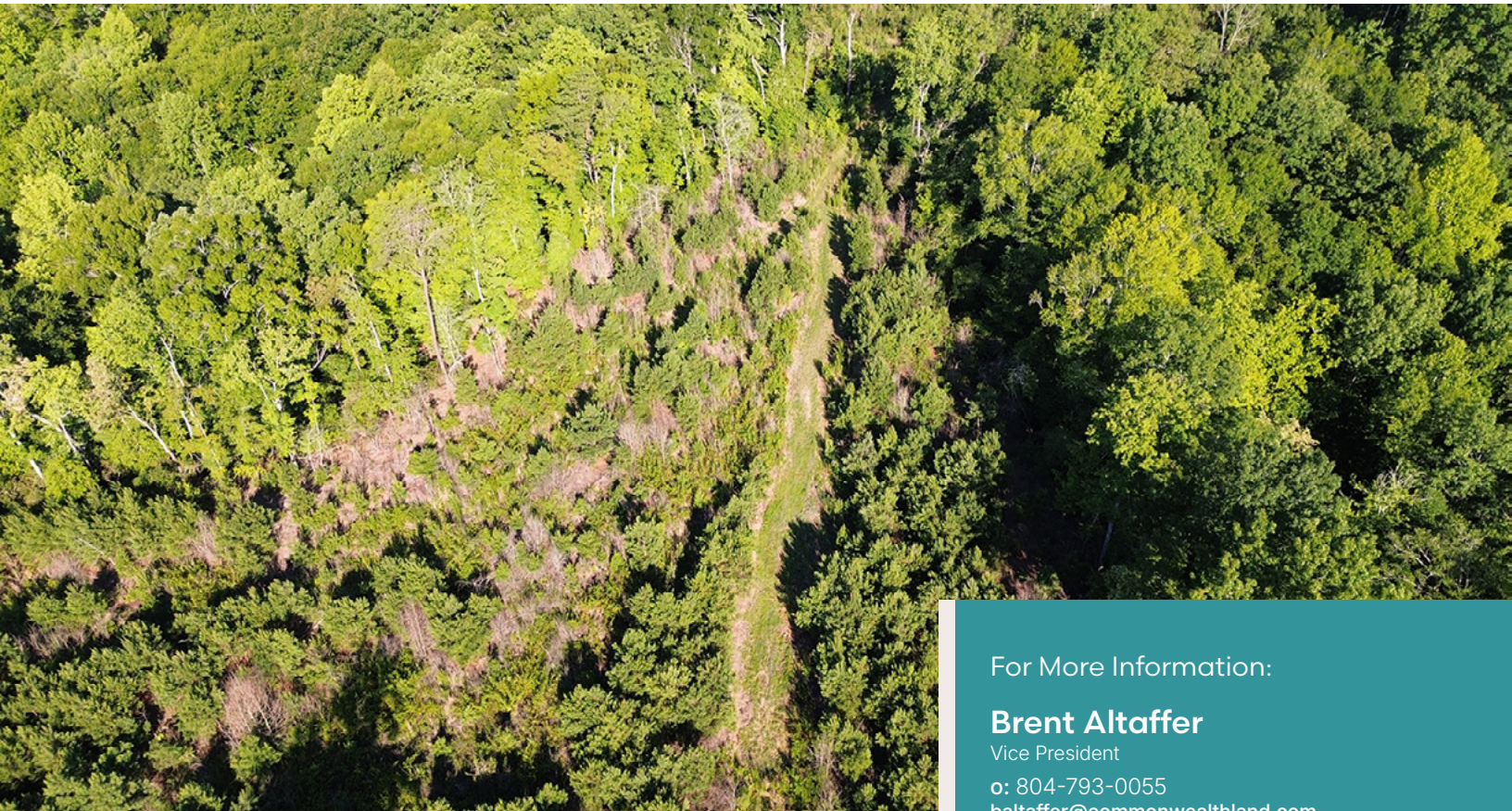
o: 804-346-4966

commonwealthcommercial.com

For Sale | 483 Acres

Rolfe Highway, Surry, VA 23883

PRICE: \$2,150,000 ▪ SURRY COUNTY



For More Information:

Brent Altaffer

Vice President

o: 804-793-0055

baltaffer@commonwealthland.com

Bill Barnett

Senior Vice President | Partner

o: 804-433-1821

bbarnett@commonwealthland.com



4198 Cox Road, Suite 200
Glen Allen, VA 23060

o: 804-346-4966

commonwealthcommercial.com

For Sale | 483 Acres

Rolfe Highway, Surry, VA 23883

PRICE: \$2,150,000 ▪ SURRY COUNTY



For More Information:

Brent Altaffer

Vice President

o: 804-793-0055

baltaffer@commonwealthland.com

Bill Barnett

Senior Vice President | Partner

o: 804-433-1821

bbarnett@commonwealthland.com



4198 Cox Road, Suite 200
Glen Allen, VA 23060

o: 804-346-4966

commonwealthcommercial.com